

November 2012 \$2.75

Beaver Beacon

The Island Monthly Since 1955

IF A TREE STANDS IN THE FOREST



Dalwhinnie

The meeting place

Full breakfast, fresh baked breads, donuts, pastries, cakes, lunch with such specialty sandwiches as our famous portobelo mushroom sandwich, fresh ground beef burgers, pizza, cappuccino, fresh salads, and gourmet kitchen items and cookbooks! A great place to meet friends! (231) 448-2736.



McDonough's Market, Inc.

Since 1933
On America's "Emerald Isle"

38240 Michigan Avenue
Beaver Island, MI 49782
(231) 448-2733

Full line of groceries. Custom-cut meat.
Fresh produce, Beer, Wine, Liquor.
A large selection of specialty foods. Block & cube ice.
Post cards. Beaver Island clothing and gifts.
Small & major appliances.
Notary service, Fax, Money orders. Michigan lottery.
Greeting cards, Island maps, Beaver Island books.
www.mcdonoughsmarket.com



CARY CONCRETE LTD

GREG CARY - OWNER LICENSED BUILDER

- | | | |
|--|--------------------|---------------------------------------|
| • Automated Batch Plant | • Driveways | • Basements |
| • Redi-Mix & Insulated Foam Poured Walls | • Sidewalks | • Fireplaces |
| | • Concrete Pouring | • Unlimited Masonry & Cement Supplies |
| | • Garages | |

CALL NOW

FOR A FREE ESTIMATE
231.448.2242

CARY CONCRETE LTD . 36520 KINGS HWY . BEAVER ISLAND, MI . 49782

SCHWARTZFISHER

STONWORKS

Quality Work Done on Time

EXCAVATION

- Site Clearing
- Driveways
- Basements
- Septic Systems
- Pump Back Systems
- Poured Concrete Walls

MASONRY

- Block Work
- Flat Work
- Site Prep
- Tree Clearing
- Rock Retaining Walls
- Chimneys
- Stone Work

WELDING

- Mig
- Tig
- Aluminum
- Stainless Steel
- Plasma Cutter
- Steel Fabrication

DAVID SCHWARTZFISHER, OWNER
27540 BARNEY'S LAKE ROAD, BEAVER ISLAND MI 49782

(231) 448-2706

contents

NOVEMBER 2012



News from the Townships	4.
The County Garage – is it coming?	6.
The Wildlife Club and Community Volunteers	8.
Everything you wanted to know about the NRESC	15.
One Hundred Years Ago	16.
We've got color	20.
That Fateful Day	23.
On This Date	24.
This Laugh's on You, Boys and Girls	26.
Over the Hills and Through the Woods	28.
From the Vault: Building the Roosevelt School	35.

Beaver Beacon

the Island Monthly since 1955

published by

Paradise Bay Press

Beaver Beacon

Box 254, Beaver Island, MI 49782

(231) 448-2476

www.beaverbeacon.com

editors/owners

Jeff Cashman

jcashman@beaverisland.net

William Cashman

wcashman@beaverisland.net

contributors

Joyce Bartels

Charlie Donaldson

Larry Hansz

Tom Kludt

Jacque LaFreniere

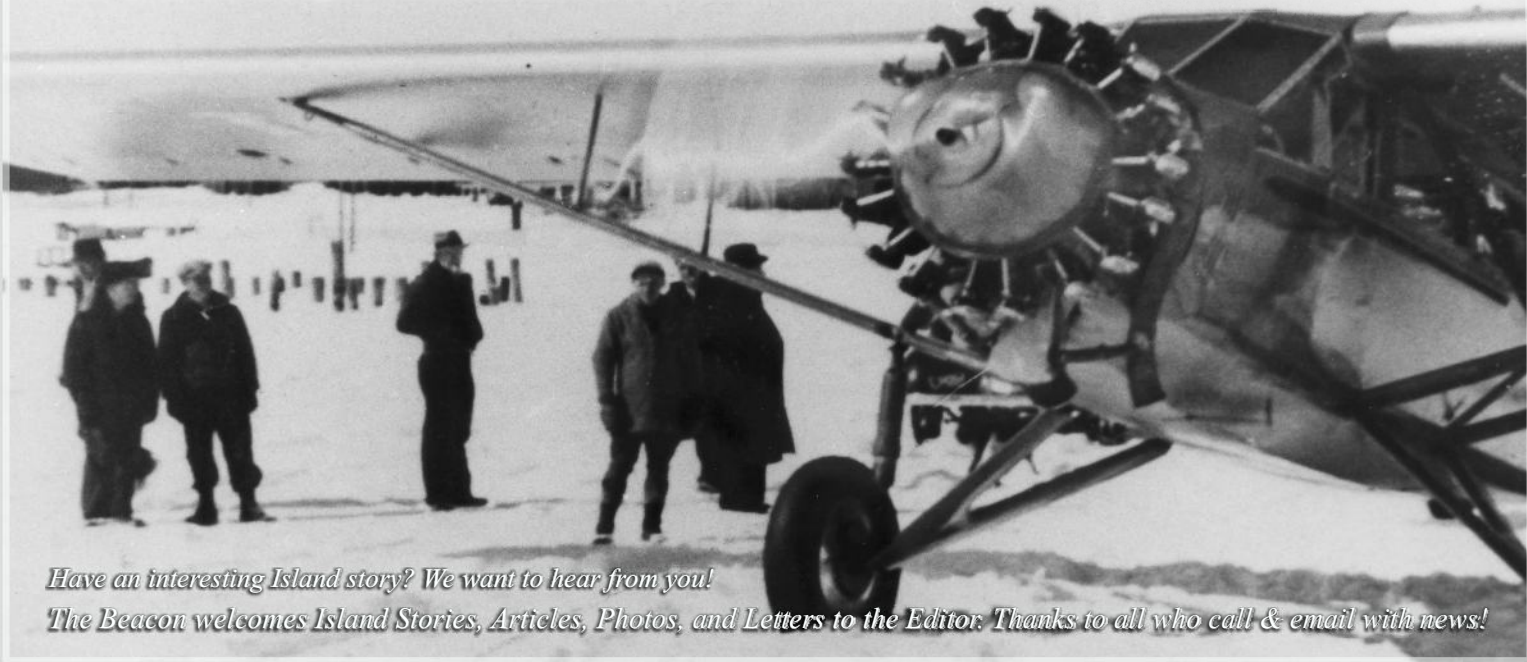
Ken McDonald

Antje Price

Merry Roe

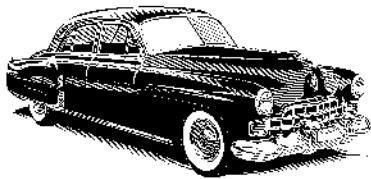
Joyce Runberg

Paul Welke



Have an interesting Island story? We want to hear from you!

The Beacon welcomes Island Stories, Articles, Photos, and Letters to the Editor. Thanks to all who call & email with news!



Inland Auto

Mobile and Land Based Repair

29 years experience in the business

Friendly Service

Michigan master certified in
automotive light and heavy trucks

We repair heavy equipment.

We Build and Service

Electric Vehicles too!

Jeff Connor Proprietor



231-448-3132

R. Gillespie Enterprises

P.O. BOX 217 . BEAVER ISLAND MI 49782



231-448-2577

Excavating * Road Building
Contracting * Licensed Builder

WWW.GILLESPIEENTERPRISES.COM

Live harbor webcam at www.BeaverIslandRealty.com



- ✓ Licensed and Insured
Island-based Business
- ✓ Quality, Efficient, and
Professional Service
- ✓ Electrical, Voice & Data
- ✓ Residential & Commercial
- ✓ Plus, we're nice!

231-448-2093

4. NEWS FROM THE TOWNSHIPS

St. James Township

The EMS director requested a one-time contribution of \$3,500 because a revision of Medicare payment rules had delayed payments from them for three months, and there were bills to pay—such as to Mike Slattery, the air-evac consultant (\$2,500). Plus, every run they make consumes \$300-\$400 in supplies, on average. The Township agreed. A similar request was to be made to Peaine.

A request was received to extend snow-plowing down the Gull Harbor Road for the sake of a new year-around resident. Supervisor Speck said he would ask the Road Commission about this, and speculated that a turn-around for the plow truck might have to be installed at the resident's expense.

The new storm water ordinance proposal was discussed. It was noted that Charlevoix (city) and Boyne City have declined to approve it, and Peaine was expected to decline to approve it as well, as unnecessary. Doug Tilley pointed out that similar restrictions were already in the Master Plan, which would have to be modified if the proposal were adopted. On the other hand, it was said that not adopting the ordinance would eliminate the Township's ability to consult with experts on individual cases, and the proposed

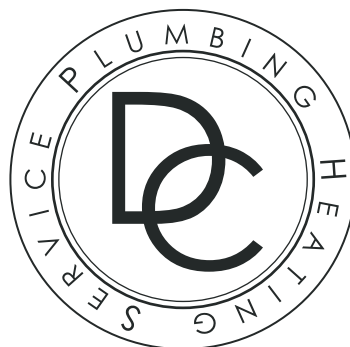
storm water ordinance had more teeth than the current rules. It was said there would be few applications—just new large commercial buildings and driveways running downhill to a county road. So it was unanimously passed.

The AT&T Donegal Bay tower lease was discussed: \$500 for an option, and then \$1,500/month when it goes into effect. But first a bigger equipment shelter had to be built (12 x 20 instead of the existing 12 x 14) and the fence moved—at AT&T expense. They intend to barge a prefab building to the Island, possibly not until the spring.

The supervisor was authorized to write to the Road Commission and ask it to release the funds that were set aside (\$750,000) to build a new county garage next to the Transfer Station. Peaine had already made such a request.

The supervisor was also authorized to sign a contract with Sanders & Czapski for them to provide administrative services for the completion of Stage I of the Harbor Light restoration. They had proposed charging \$3,000 for organizing the bidding, \$4,500 for contract administration, and \$600 for advertising, shipping, and making copies.

The Town Hall's heating system was discussed. At its last repair the Board was told "not to put any more



- NEW CONSTRUCTION
- REMODEL
- COTTAGE OPENING,
CLOSING, CLEANING, +
MAINTENANCE
- SHOWER & BATHROOM
DESIGN
- FURNACE & BOILER
SERVICE + INSTALLATION
- FAUCET + FIXTURE
REPLACEMENT
- WATER HEATER
REPLACEMENT + SERVICE
- WELL MAINTENANCE
- LICENSED HVAC
INSTALLATION + REPAIR
- LP APPLIANCE + SUPPLY
INSTALLATION
- I CAN FIX ANY LEAKY
FAUCET OR PIPES
- PLUGGED SEPTIC LINES
- WATER SOFTENER
INSTALLATION + SERVICE
- DISCOUNTED SERVICE
RATES FOR YEAR ROUND
RESIDENTS

Call 231-675-8692

money into the current boiler system.” The advantages of electric baseboard heat were discussed—one being the elimination of boiler insurance. The decision was to try to make it through this winter and if the boiler quits use plug-in electric heaters, and then install baseboard heat in the spring.

Pete Plastrik reported on the progress of the NRESC, saying a birding festival would require a project leader and none had yet appeared, but a Peaine Township Recreation Plan was being created following the process recently used by St. James.

A letter from Mike Koharski praising our Harbor Master was read.

Nancy Ferguson spoke briefly to the Board about her candidacy for the County Commission, saying she had taught for 25 years, run a riding stable, had retail experience, and owned property on the Island. She said that as the occasional bank clerk she had learned a lot about the Island’s issues over the years.

Peaine Township

Peaine Supervisor Jack Gallagher announced that the EMS/Island Airways agreement for evacuating patients had been finalized and signed.

It was reported that at a special meeting the millage levy of 7.8395 had

been approved, and that of the three options for furnace repair or replacement (new fuel-oil furnace, \$4,095; new propane furnace, \$6,195; oil-burner repair, \$943), repairing the existing furnace was chosen. The Board also agreed to request the release of County funds for the new CCRC garage, and was considering extending the application of a hard road-surfacing product to the East Side Drive beyond the ¼ mile the County had agreed to apply, running from Four Corners to just past the Transfer Station.

The Highway towers matter was discussed. Verizon wanted to trade its existing 101' tower for the EMS's 105' tower (the third tower at this site, AT&T's, is 99' tall). Verizon would then take down the former EMS tower and replace it with a better-built one for the equipment it wants to install. No one was sure how St. James came to be the owner of this tower on Peaine land, but it would have to agree to any swap. Jerry LaFreniere reported that at present the EMS was using the East Side Fire Hall tower, with the one on King's Highway serving as back-up; the Donegal Bay Road tower and the Coast Guard tower at Beaver Head were having problems. A special meeting with both Townships was called to discuss this further.

continued on page 6.

Paradise Bay Coffee Shop

Across from the Township Airport



Featuring coffee, espresso, specialty drinks, Breakfast & Lunch

Closed Until 2013
Thanks for Your Business
This Year & See You At
Paradise Bay Coffee Shop
Next Season!

Dale & Terry Keyes,
Proprietors Dale_Terry_Keyes@msn.com





Oak Woods LODGE

formerly Laurain Lodge

- ◆ Fine accommodations known for hospitality, quality, comfort and convenience for business or pleasure.
- ◆ Fully furnished housekeeping units with TV
1 or 2-Bedrooms; king, queen, twin beds available
- ◆ Grand deck, grills, separate children's play area, campfire.
- ◆ 12-Ft. aluminum rowboats on inland lakes for fishing, sightseeing (included with each room)
- ◆ Fresh, spacious rooms, pleasant gardens, wooded views.

Relax. Let the hospitality at Laurain Lodge help you enjoy Beaver Island. It's why so many return year after year.

Visit our website to see pictures: www.OakWoodsLodge.com

Call today for reservations or information on island activities

Phone (231) 448-2099

38085 Beaver Lodge Drive, Beaver Island, MI 49782

Your Hosts, Larry & Theresa Laurain

Beautiful setting

Within a short walk to:

Shopping
Dining
Public beach
Playground
Hiking
Museums
Tennis courts
Library

Daily morning coffee & donuts

Don't go through another winter without storage!

Pole Barn and Garage packages for your cars, boats, tractors, etc.

Lots of sizes to work with: 24 x 32, 24 x 40, 32 x 40, 32 x 48, 40 x 60 and larger.

Call for a quote today!



McDonough Construction, Inc.

Contact Kevin B. McDonough

Home: 231.448.3038 Cell: 231.675.5444

www.mcdonoughconstructioninc.com

**"DICK AND AMY,
AMY AND DICK"
WE DO BLOCK,
STONE, AND BRICK.**

(231) 448-2213.



CONNAGHAN CONSTRUCTION

COMPLETE BUILDING AND REMODEL
ADDITIONS, GARAGES, DECKS, PATIOS, PORCHES
KITCHENS AND BATHS, FLOORS AND MORE
FREE ESTIMATES. TONYCONNAGHAN@GMAIL.COM

231 448 2454
CELL 616 843 5381

Beaver Island Association

*Supporting Environmental
and Economic Sustainability*

Join Now! Keep in touch with Beaver Island events likely to affect you and your property.

Receive *Island Currents*, the informative BIA newsletter.



Contact: Bob Anderson, Treasurer at BIA, Box 390, Beaver Island, MI 49782

Visit our web site: BeaverIslandAssociation.org

Martin Well Drilling

- Residential and Commercial
- Water Wells: 4", 5", and larger
- Modern Rotary Well Rig

Also ...

- Pump Installations
- Well Repairs

If you want a well now, I have the equipment.

Call Bud @ 448-2197
or 448-2397



6. *News from the Townships*, from page 5. A "Profit and Loss, Budget vs. Actual" financial report was circulated and criticized for not having enough detail. Its columns compared actual year-to-date amounts to the amounts budgeted for the year. The supervisor suggested this report should have contained a column with the year-to-date budgeted amount as well so it could be seen how the Township was doing in comparison with its budget. The clerk said her program did not allow the information to be formatted this way, but the supervisor said it did and he would show her how to get these numbers. A discussion followed

about the duties of the clerk, treasurer, and supervisor in this regard, with the supervisor citing Michigan's rules for Township operation.

Pam Grassmick, the only applicant, had her term on the Human Services Commission extended.

Nancy Ferguson spoke to the Board and the audience about her candidacy for the Charlevoix County Council and her background: she taught for 25 years, was a ski instructor, ran two stained-glass shops, and has been at the bank for 14 years.

Special Joint Meeting

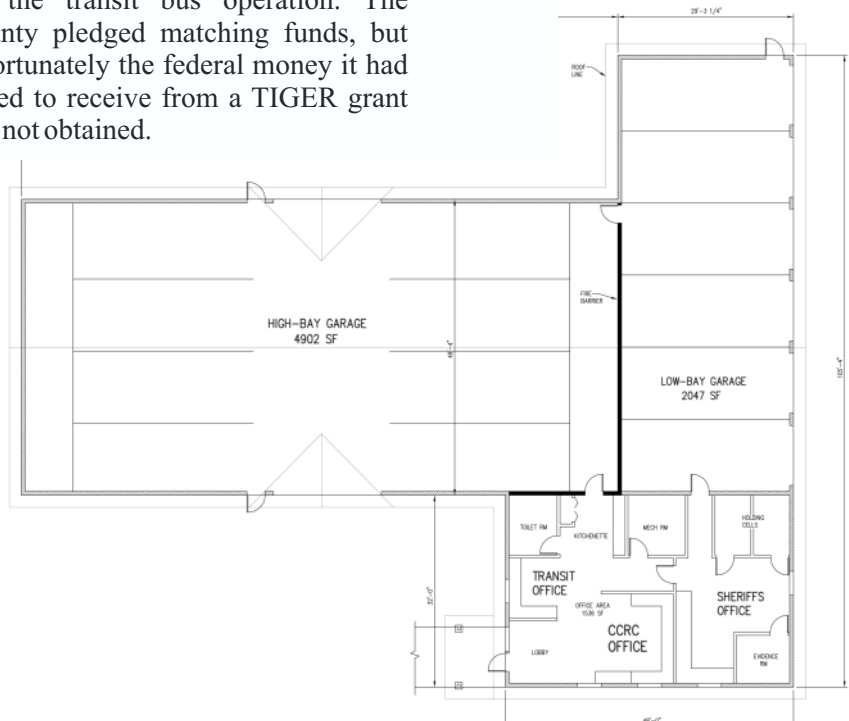
At a well-attended meeting on 10-

A NEW COUNTY GARAGE?



Pictured above is a concept drawing for a county garage to be located on the East Side Drive just east of the Transfer Station. This building would provide ample space for county plows, space for the Deputy's operations, and for the transit bus operation. The County pledged matching funds, but unfortunately the federal money it had hoped to receive from a TIGER grant was not obtained.

Possibly the plan may be scaled back and the complex begun with just the county-level share of the funding – around \$720,000. A modular design might allow future expansion if a new grant application is successful.



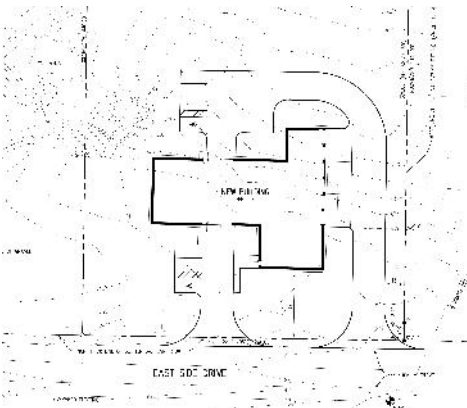
22 to discuss a tower swap, the concerns of the EMS were given priority. As a result, Verizon amended its proposal by agreeing to place an EMS antenna on top of its tower, the one farthest north of the three Highway towers, and to connect it with new coaxial cable so there would be no interruption in service (it's the EMS's back-up location) when it takes down the current EMS tower once the swap is made.

Its new tower would carry more-powerful equipment, allowing it to offer 4G service over a greater part of the Island. For it to provide service to the entire Island, Verizon would also have to install equipment on the

Island's taller towers. None of these taller towers, though, would by itself, provide better service with a single-tower installation than the shorter Highway tower because it is in the best single location for signals when equipment or installations are limited.

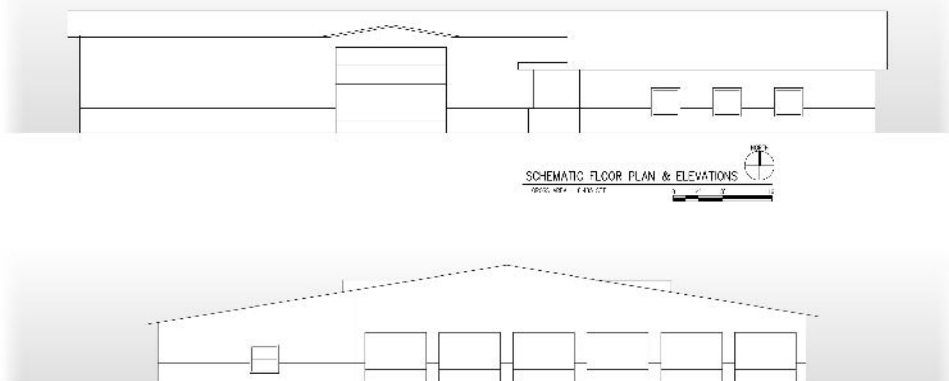
The mainland EMS dispatch director reported that he had upgraded the Donegal Bay Road and Coast Guard towers' capacity so they were now back online to support the main EMS tower at the East Side Fire Hall.

At the conclusion of the meeting Verizon's swap request was approved by both Townships.



The greatest need is for the creation of an out-of-town base for the County Road Commission so the trucks would not have to go through town to do their work, most of which is in the country.

Without the TIGER grant, there's time to consider the optimum location for the transit bus and the Deputy's base. A need has been expressed, though, to reduce congestion at the Government Center (the former Med Center) at the edge of town, primarily from too many vehicles. But it may turn out that the bus and the Sheriff should remain in town.



CHARLEVOIX'S BEST Beaver Island Resident Rates



Make the Weathervane Terrace Inn & Suites part of your Beaver Island commute. **Only Island residents** receive discounted lodging rates all year.

FREE Deluxe Continental Breakfast
In-room Refrigerator & Microwave
Wireless Internet Access (free)
Outdoor Pool * Indoor Hot Tub Spa Tower
All Rooms have ~ 32" Flat Screen & DVR

RATES FROM \$47.00 off season

Weathervane Terrace Inn & Suites

231-547-9955 • 800-552-0025

One Eleven Pine River Lane
Charlevoix, Michigan 49720

Discount available to island residents only. I.D. required

Now doing wells on Beaver Island!



WELL DRILLING CO.

(231) 228-5678

4" & Up Steel Wells

5" PVC Wells

Pump Sales & Service

Well Repair

Mark Zientek

John Zientek

NATIONAL WATER WELL ASSOC.

Certified Contractor

Fax (231) 228-5637

233 E. Kasson Rd.

Maple City, MI 49664



WILDLIFE CLUB AND COMMUNITY VOLUNTEERS

On October 13, a few hearty volunteers from the Wildlife Club and the community met at the walleye rearing pond to renovate the pond so it would be ready to receive the tiny walleye fry from the state in early spring of next year. The pond was weather worn from its years of service to the Island and needed some major maintenance to improve its yield of walleye for stocking in Lake Geneserath.

For those unfamiliar with the pond and its activity, it is the reason that

Beaver Island has a successful walleye sport fishery on Lake Geneserath. This rearing and stocking program is a partnership with the Michigan Department of Fisheries, which furnishes the fry and authorizes the stocking in the lake. In the spring the pond is filled from a well to an average depth of 2'. When the fry are received from the state, they are temperature acclimated to the pond before introduction to its waters, where they grow from feeding on the plankton.

This process takes a couple of

months to get the young fish to a length of about 1½" ready to survive in the lake. Much longer than that, the small fish can become cannibals. It involves almost daily inspections, efforts to keep the pond pest free, and a complicated trapping process when the walleye have grown large enough to move to the lake. The labor and expense for this is born by Beaver Island Wildlife Club, which raises the money by donations, membership dues and its fundraisers – such as the annual fall raffle.

Ron Wojan - General Contractor Inc.



Quality Built Homes with attention to detail and customer satisfaction. We build a variety of projects from small cabins to Lodges. Ron has over 30 years experience building homes on the Island.

ronwojangc@tds.net

231-448-2400

36869 Kings Highway . Beaver Island Michigan 49782 . www.ronwojanconstruction.com





McDonough Construction, Inc.

State Licensed and Insured
 Certified in Lead Safety and Weatherization
 25 years of honest experience Quality craftsmanship
 New construction, remodels, additions, garages
 Construction Consulting

Contact Kevin B. McDonough Home: 231.448.3038 Cell: 231.675.5444
 Coming Soon: www.mcdonoughconstructioninc.com



ANDERSON AERIAL PHOTOGRAPHY



e-mail aap.mba@charter.net phone 231-947-4598

Mark LaFreniere
Painting

Interiors and Exteriors
Free Estimate
231-448-2220



Photographs thanks to Jacque LaFreniere

RENEW WALLEYE POND

The 2011 rearing stocking activity was very limited because of competition in the pond by tadpoles and a large number of turtles) due to failures with the fence from long-term weather effects). The yield from 50,000 fry was around 1,500 (3%) which were stocked in Lake Geneserath.

The past year was a disaster. First the older shallow well went dry so the pond could not be filled. An attempt to raise the fry in another pond owned by Jeff Mestelle didn't produce a single fish for

stocking, so zero fish were stocked in Lake Geneserath in 2012.

This summer the Wildlife Club hosted a visit by Heather Hettinger, the new Michigan Fisheries Management Biologist assigned to inland waters in the northern part of the state. This was the first visit to the Island by a state fisheries biologist in some number of years. One of her actions here was to inspect the pond and make any recommendations for improvement and operation. Her advice included making fence alter-

ations, providing a suitable source of water, preparation of the pond bottom in the fall, and aids to improve the net trapping process of the small fish.

The pond is located on Jon and Sally Fogg's Barney Lake Road property. It was originally dug by Joe Nuke almost 30 years ago. After hearing of the pond well dilemma this spring, Jon and Sally decided to have a new well drilled for the pond at their expense. This was very generous gesture of the Foggs and should be well appreciated

continued on page 11.

Emerald Isle Hotel

www.emeraldislehotel.com



**Very Nice Rooms
with kitchens
& Apartment Suites**



**Right on the edge
of Town, the Island's**

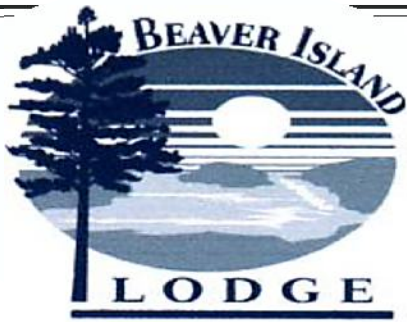


newest Hotel

one block from the Ferry Dock

Conference Room . Free WIFI Internet access

for reservations, please call 231.448.2376



*The Restaurant
at Beaver Island Lodge*

Where the Cuisine is as Wonderful as the View



231-448-2396

www.beaverislandlodge.com

Charlevoix State Bank

Your Hometown Community Bank

Local service you can trust on Beaver Island

Beaver Island Branch Hours October 16 - April

Tuesday & Friday

9am - 2pm

5 Locations:

Main Office 547-4411

111 State St. · Charlevoix

Beaver Island 448-2190

38230 Michigan Ave. · Beaver Island

East Jordan 536-5511

100 Main St. · East Jordan

Ellsworth 588-2211

9136 Main St. · Ellsworth

Drive-up Only

102 M-66 · Charlevoix

Internet Banking · Bill Pay · Personal & Business Banking

Member
FDIC



1-800-547-6080 • charlevoixstatebank.com



The Beauty of Beaver Island



North French Bay Road - 556 Acres, Lower West Side of Island - \$2,224,000

South French Bay Road - 48 Acres and 1,200 ft. of Waterfront - \$1,200,000



Harbor

Sotheby's
INTERNATIONAL REALTY

Connie Lenau, Sales Associate
231.499.1224 | connie@harborsir.com
harborsir.com



Kings Hwy and Sloptown Roads - 338 Acres - \$1,995,000



Western Shores Road - 250 ft. of Waterfront - \$375,000

Garden Island View Road - 125 ft. of Waterfront - \$175,000

Walleye Pond, continued from page 9.
by the community. A few members of the Wildlife Club got together and devised the remainder of the pond renovations that would meet the advice of the biologist.

The actions included plowing the pond bottom, removing the deteriorated pond liner, removing the old turtle guard fence, removing and reinstalling the old wire fence to accommodate erosion, installing additional fence posts with a new galvanized turtle guard, and providing an earth fill around the entire 500 feet of fence.

A work day to complete the project was set for Saturday, October 13 and a plea for volunteers to assist from the community was made on the Beaver Island Forum resulting in 14 people plus the author. It is disheartening and disturbing to note that only two Lake Geneserath residents (also club members) assisted and for the most part, the fishing community ignored the request for help. That's a far less number of those who fish and otherwise benefit from the

great amount of work that goes into assuring a thriving sport fishery exists.

A few weeks prior to the work day, Bill Detwiler made the long journey from his home to the pond and plowed the bottom as prescribed. The following week, Jacque LaFreniere brought students from the 21st Century Community Learning Center's afterschool program, specifically the Ranger Club and Junior Ranger Club, and helped out the Beaver Island Wildlife Club by picking pieces of the walleye pond liner that has deteriorated over the past years. They worked with the spirit and energy level only a group of 6-11 year olds can do.

"The Wildlife Club is working to improve the walleye pond including fence work, new pump and well etc. in anticipation of the next year's usage," Jacque LaFreniere reported.

Ed Wojan donated the needed metal fence poles and Don Tritsch cut them to the required length ahead of time so the project could proceed smoothly. Max Antinori, Steph Bugai, Amy Burris (for

Galen Bartels, who was working off 11. the Island), Bill and Shirley Detwiler, Cheryl Kludt, Mark and Jacque LaFreniere, Tina and Gary Morgan, J.P. Stigall, Tom Whitman, and Jim Wojan arrived bright and early for the work day. Bill Detwiler's tractor saved a lot of hand shovel work and blisters by moving the earth as needed. Jim Wojan had additional equipment at the ready if needed.

With "tailgate" coffee, hot chocolate, member Shirley Detwiler's famous unending supply of cookies and Cheryl Kludt's muffins, the work was accomplished as planned in spite of the bad weather. And always a standard on the island, lots of good natured kidding on who was working, and who wasn't, and who was the best farmer and so on. Smiles all around when the job was finished as planned! Let's see how the small fish grow in the renovated pond in 2013.

—Tom Kludt VP,
Beaver Island Wildlife Club

SHE'S HERE!

Sgt. Daniel Nackerman and Dusty Day Nackerman announce the birth of a baby girl. Ryleigh Kay Nackerman was born on Sept. 19th. Dan is serving in the USAF, and is the son of Patrick Nackerman. Ryleigh Kay is the great granddaughter of Rod Nackerman.

THANKS

Recently I was flown off the Island after midnight, and want to convey that Chris (at the Health Center) and the EMTs were both professional and greatly helpful in getting me admitted to Northern Michigan Hospital for evaluation and Treatment. My family is

so appreciative of this wonderful service by our volunteers, who do so much for the Island in so many ways. We offer a huge Thank You to all concerned.

—Joyce Runberg

LAMPPOSTS

If you watch,
You'll see there's a moment
When the last dot of the sun,
Whether it's gold or red or yellow,
So quickly dissolves,
Like when you turn off the lamp to
join your lover
Or hear your grandmother's laboring
final breath.

The Old Testament tells us
To number our days
That we may apply our heart
unto wisdom.
It's really the moments to count,
And to separate, one from another.

—Charlie Donaldson

MY PHILOSOPHY

Animate your insights
It's time to celebrate!
You've lived and learned, but only just begun.

Give yourself the gift of your own wisdom;
See how even your setbacks have offered insights
Into truths that will set you free.

Allow all you've experienced to feed your imagination
And help you set new goals.

By now, you know that almost nothing goes as planned
And that when you bend, you can transcend.

Remain flexible, creative, motivated,
And you're bound to realize something even better ...
Success beyond your wildest dreams.

—Merry (MG) Roe

12. BEAUTIFUL WEATHER FOR BEACH CLEAN-UP

The annual beach cleanup sponsored by the BIA was held on an absolutely beautiful day this past September 15. Twenty-nine volunteers showed up at the Community Center to pick up their data cards and bags. They cleaned almost 31 miles of Beaver Island beaches—and Northcutt Bay on Garden Island, thanks to Pam Grassmick.

Bob Anderson found the two most unique items: a weather balloon battery

and housing, and a glass bottle with an alien doll inside. Judy Boyle retained her title of “Queen of Beach Trash” with a haul estimated at 150 pounds. Two 50-gallon drums made up most of that weight. Young Paige Pryor came in second in trash tonnage when she found a huge 100-pound rubber belt from some construction machinery on the beach near the boat dock. Low water levels made these finds visible this year. There

were 44 dead cormorants found, along with several other birds, indicating a potential return of avian botulism.

By noon everyone returned to the Community Center for a hot dog lunch sponsored by the BIA. Thanks to McDonough’s Market for donating the buns, the Community Center for donating the space and—most importantly—to all the volunteers who helped keep Beaver Island beautiful.

AVIAN BOTULISM

Avian botulism has once again resulted in birds washing up on the beaches in numbers. At the end of the month, the transfer station agreed to take them free of charge in doubled

household garbage bags.

As we go to press, Jacque LaFreniere, the Avian Botulism monitor for Beaver Island, is organizing a crew to take care of Sand Bay. “Prior to the

big blows from Sandy,” Jacque said, “there were 50+ birds along the beach of only half of Sand Bay.” Birds including loons were also found at McCauley’s Point and other beaches on the Island.

HOLIDAY CALENDAR OF EVENTS

Nov. 11 – **Holiday Bazaar** at GFC
Sunday going from 11:00am until 2:30pm

Nov. 22 – **Thanksgiving Dinner** at the
Beaver Island Christian Church.
6:00pm. Community & visitors are

welcome. If possible bring a dish to pass or a dessert to share.

Dec. 9 – **Christmas Cantata**

Dec. 13 – **Cookie Carnival** at the GFC
Noon until 4:00pm. To preorder
Party Cookies or Nutmeg Logs

contact Jean Carpenter 2893; price same as last year \$4.00 p/dozen. The cookies can be picked up at noon.

BICC Pastors for month of Nov: 11/4 & 11/11 Pastor Howard Davis; 11/18 & 11/25 Pastor Harold Kruse.

Stoney Acre Grill

Seafood*Steaks*Salads*Mexican*Sandwiches*Vegetarian

Pastas*Mediterranean*Appetizers*Pub Fare*Specials

*Thurs-Baby Back BBQ Ribs * Fri-Yellow Lake Perch * Fresh Whitefish Daily * Daily Specials plus full Menu*

High Standards, Great Quality, Low Prices

Donegal Danny's Pub

***Neighborhood Tavern with Island Charm,
Vast Selection and an Emphasis on Service***

Six TV's, IPOD, Wii, Darts,

Friendly Bartenders, Great Prices

Music most weekends...never a cover charge or drink price increase

Open 7 Days

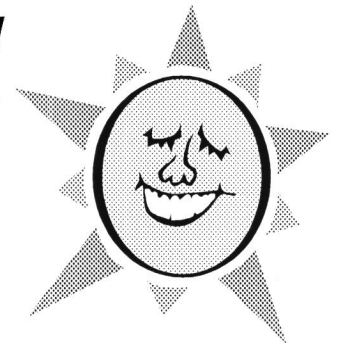
448-3000

***Stoney Acre Grill &
Donegal Danny's Pub***

are For Sale

Interested Parties Please Contact

Liam & Marilyn (231-448-3125)



Lunch

***Mon-Sat
11am-2pm***

Dinner

***Mon-Sun
5pm-9pm***

****Carry-Out
Available
*Rides
Available***

***One Mile South of
The Boat Dock Off
The King's Own Hi-Way***

448-2560

TWO NEW SUPERVISORS

13.

After a season of extensive campaigning, with more signs, postcards, letters, brochures, and ads in the media than ever before, the results, which were announced on Tuesday evening, created only two local changes.

In St. James, Bill Haggard won against incumbent (but write-in candidate) Rick Speck, 125–110.

In Peaine, none of the “Team up for Change” candidates was elected. Bill Kohls unseated incumbent Jack Gallagher, 156–122. Incumbent Larry Kubic held off Tina Morgan (141–137) and incumbent Colleen Martin outscored Krys Lyle (175–102). And of the five Trustees on the ballot, incumbents Paul Welke (156) and Pete

LoDico (129) held off challengers Brad Grassmick (122), Ernie Martin (75), and Mike Scripps (23 – his name appeared even though he had previously announced his withdrawal from the race.)

The biggest drama occurred in Peaine, where there was a one ballot discrepancy. The poll closed at 8:00 p.m., but the discrepancy required the election inspectors (Donna Stambaugh, Kathy Ruis, Peg Hoogendorn, and Janet O'Donnell) to count the ballots and check the voting machine's operation until they were allowed by a higher office to give up at 9:40.

In St. James there were some modest challenges to the incumbents.

There were two write-in votes for Trustee, 7 for Clerk, and 6 for Treasurer.

In the County Commission race, Rich Gillespie outpolled Nancy Ferguson, 158–87 in St. James and 164–105 in Peaine.

Obama topped Romney in St. James, 127–113, but Mitt trumped the President in Peaine, 152–120. McDowell topped Benishek, 107–102, in St. James, but Benishek got revenge in Peaine, 135–108. Stabenow triumphed over Hoekstra, 127–88 in St. James and 124–122 in Peaine.

All six propositions were soundly defeated in each Township, almost 3:1 in St. James and roughly 2:1 in Peaine.

Now the sign removal can begin.

HOW LOW?

Despite a week of rain, the level of Lake Michigan continued to fall during October, dropping to 2" above the all-time record set almost fifty years ago. It was over two feet below the long-term average. The Army Corps of Engineers

projects it to keep dropping, setting a new record sometime in December and continuing to fall into the spring.

The “superstorm” made itself known on the Island in the form of four days of on-again off-again rain, but

when it passed on November 1st and the sun came out, the harbor looked even lower than it had before.

The week after Sandy, the Island was teased with a foretaste of snow.



St. James Marine Co.



**is Now Collecting
Scrap Metal
to Recycle**



FREE

**Clean up your property
Bring scrap metal to our dock
(Look for the scrap pile on the north side of the dock)
No Freon (Refrigeration)**

If you have any questions or need information, please contact

St. James Marine Co.

Phone: (231) 448-4000 Cell: (231) 838-0254

www.stjamesmarine.com

ANNUAL BEAVER ISLAND WILDLIFE CLUB RAFFLE



The 2012 Raffle features

3 Grand Prizes

· Scoped .270 Savage Bolt Action Rifle

· Nikon Binoculars

· Garmin Hand Held GPS

Additional Prizes to be raffled,
as well – Numerous Chances to
Win Something

Need not be present to win

Raffle Tickets: \$10 ea or 11 Tickets for \$100

Available at Powers DO IT BEST Hardware
Or any Club Officer or Director

This annual/primary fundraiser enables the club to fund numerous
projects around the Island and the archipelago
Drawing to be held at the Annual Dinner, Saturday, November 17th, 2012

ANNUAL BEAVER ISLAND WILDLIFE CLUB HAROLD LOUNSBERRY MEMORIAL DINNER

Saturday, November 17th, 2012

Time: 5:00 PM

Shamrock Bar and Restaurant

Eric and Dana Hodgson will be providing another sumptuous buffet
dinner that will include game and non game entrees. Previous dinner
attendees unanimously agree that it's a great night out for good food,
drink, friendship and a lot of laughs.

Our Main Raffle will be held between 7:00 and 8:00 PM

There will be a 50/50 raffle through the evening
Please support our efforts! Hope to see you there!

Your Port of Call on America's Emerald Isle



**Located across from
the Ferry Dock
Private swimming pool
Open May 1 - Nov 30**

Housekeeping Units

- Up to 6 guests
- 2 bedrooms
- Living area with hide-a-bed
- Fully-equipped kitchen
- WIFI, satellite TV & phone
- Bath with shower

Efficiency Units

- Up to 4 guests
- Two beds
- Microwave & mini refrigerator
- WIFI & satellite TV
- Bath with tub/shower



HarborviewBeaverIsland.com
231-448-2201 | harborview@tds.net

ST. JAMES BOAT SHOP

BEAVER ISLAND,
MICHIGAN

EST. 1985

231-448-2365

231-838-2883

BILL FREESE & DAN BURTON / BUILDERS

WWW.STJAMESBOATSHOP.COM

EMAIL: STJAMESBOATSHOP@YAHOO.COM



BILL KOHLS

**RESPECTED
CHOICE
FOR
PEAINE
TOWNSHIP
SUPERVISOR**

PAID FOR BY
THE COMMITTEE TO ELECT WILLIAM KOHLS



St. James Marine Co. New Options

for Beaver Island freight
www.stjamesmarine.com

Stock up for the fall and winter!
non perishables, housewares, lumber, furniture, etc.
insulated and weatherproof
You lock it! We deliver!



small

Small Container: 58 cubic feet
(4'X4'X4'10") (LxWxH) \$45



medium

Medium Container: 162.5 ft³
(6'X5'X4'10") \$60



large

Large Container 225 ft³
(6'X8'X5'4") \$96

and, of course, extra large ...



You call, WE HAUL!

Phone: (231) 448-4000 Cell: (231) 838-0254

*Ecclesiastes 3:11 He has made everything beautiful in its time.
He has also set eternity in the hearts of men.*

Lighthouse Fellowship

Services every Sunday at
9:30 a.m. at Peaine Township Hall, with
Sunday School for children at the same time.
Bob Hoogendoorn, pastor.

WHAT CAN WE DO ABOUT OUR NATURAL RESOURCES?

15.

WHAT IS THE NRESC?

The Peaine and St. James Township Boards unanimously created the NRESC in September 2011—to “develop a balanced plan for promoting preservation and achieving sustainable economic growth and development for the Island.” The townships appointed NRESC members representing the Chamber of Commerce, Wildlife Club,

real estate and construction businesses, Beaver Island Association, the Beaver Island Community School, both townships’ planning commissions, and the Peaine Trails Committee, as well as at-large community members, the DNR, and the Little Traverse Odawa tribe—a balanced group of citizen-volunteers with different points of view, interests, and expertise. At the same time, the

township boards asked the new NRESC to develop for the boards’ consideration a comprehensive management plan for the natural resources of the Beaver archipelago, with support from the DNR and MSU facilitators. The NRESC agreed and began a planning process that it decided would rely heavily on consultations with community members and other stakeholders.

WHAT ARE THE BENEFITS OF DEVELOPING A BEAVER ISLAND NATURAL RESOURCE MANAGEMENT PLAN?

It goes without saying that most residents and visitors care about the Beaver Archipelago’s unique natural beauty and varied marine and land environments. They recognize that these natural resources are a foundation of economic activity and community well-being—and they want them to stay as they are and/or be restored for years to come. It’s also true that many different entities—the state of Michigan, the townships, thousands of individual property owners, local businesses, the school, Indian tribes, conservancy organizations, state universities, and the federal government—control the use of different parts of the islands and that some volunteer organizations, such as the Wildlife Club and the Beaver Island Association, undertake many activities to enhance, restore, and protect the environment.

Given the importance of Beaver’s

natural resources, the fragmentation of control of them, and the many stakeholders with keen interest in them, developing a comprehensive natural resource management plan with Goals, measurable Objectives, and action Strategies should benefit the following areas:

1. State land management. Provide strong community input to the state DNR—owner of a third of Beaver Island, and all of High, Hog, Squaw, and Whiskey Islands—about the desired goals for its management of state lands.

2. Economic development. Identify ways that all of the interested parties can work together to increase natural-resource based economic activity—home construction, recreation, and eco-tourism—and showcase the Island’s assets to attract visitors, residents, and investment.

3. Invasive species. Respond more effectively to current and future threats to the quality of natural resources, such as invasive species

4. Funding. Increase the financial resources available for managing the natural resources by showcasing for governments at all levels and philanthropic organizations the uniqueness of the natural resources and the shared goals of the community and other stakeholders.

5. Effective organizations. Help government and nonprofit organizations prioritize and more effectively use their volunteers and funding to achieve results the community wants.

6. A model for other communities. Provide a model of community/DNR collaboration and planning that other communities can adopt, which would reflect well on Beaver Island.

WHERE IS THE NRESC IN THE PROCESS OF NATURAL RESOURCE MANAGEMENT PLANNING?

During the spring and summer of 2012 the NRESC conducted community forums and multiple focus groups that engaged about 150 year-round and summer residents and middle-and-high school students of the Island, as well as some off-Island stakeholders, to discuss their views about the Island’s future and its natural resources.

Since then, NRESC members have been developing a set of goals and objectives for a natural resource management plan that reflect the commu-

nity’s desire for a balanced plan to support economic development and preservation of natural beauty and the environment. The process is based on reaching consensus, meaning all of NRESC’s members must buy in to all aspects of the plan.

When the NRESC members reach agreement on draft goals and objectives, they will seek extensive feedback from the community—and ideas about what actions could be taken to achieve the objectives and goals—

the strategies. Only after the feedback process will NRESC members start to draft a full-scale plan to be presented to the community and the township boards for discussion and, perhaps, adoption. This will not happen until sometime in 2013, but it’s not yet known precisely when.

(All NRESC meetings are posted and open to the public. All NRESC agendas, minutes, and other materials are posted at binresc.org.)

16. ONE HUNDRED YEARS AGO

from Joyce Bartels

(Note: Nov. 1 - 4, Storms. F. Protar)
Charlevoix Courier Wednesday,
November 6, 1912 **Local News Briefly**
Told: "Miss Martha Gallagher is
visiting friends in the city."

Charlevoix Sentinel Thursday,
November 7, 1912 **Local News:** "J. P.
Maloney, of Chicago, arrived Tuesday
evening on his way to St. James where
he was called by the serious illness of
his mother."

Beaver Island News: "William
Belfy and Alice Johnson were married
at Holy Cross church Wednesday Oct.
30th."

"Supervisors Boyle and Gallagher
went to Charlevoix last week for the
election supplies."

"Capt. Tim Roddy returned to
Chicago after spending a few weeks
with his family."

"Mrs. Lottie Schied went to
Chicago for the winter."

"Peter Cull of Idaho, is home on a
visit."

"Mrs. B. Brown of Naubinway, is
visiting her mother."

"Miss Mary Cull went to Florida
for the winter."

"Dr. King of Charlevoix was over
making sick calls." (Note: Dr. King,
appears in the Hotel Beaver register,
Oct. 24, 1912)

"Dr. D. Geoffrey went to New
Mexico."

"Fred Sendenburgh went to
Charlevoix to buy a tug."

"Geo. Stevens returned home after
spending several months at Northport
making barrels."

"Martha Gallagher went to
Petoskey last week."

"Joseph Floyd went to Charlevoix
on business last week."

"Mr. Cole owner of the shingle mill
on south end of the Island is at
Charlevoix buying horses."

Charlevoix Courier Wednesday,
November 13, 1912 **No Beaver Island
related news.** (Note: Nov. 8, Rain &

*Hail; Nov. 12 - 13 Rain to Snow - 10";
28 degrees. F. Protar)*

Charlevoix Sentinel Thursday,
November 14, 1912 **Local News:** "On
her Thursday trip the steamer *Beaver*
brought from Beaver Island over nine
tons of trout for the local shippers. The
trout catch this fall has been large. The
spawn harvest is on both at Charlevoix
and St. James, and results are very
satisfactory. A. T. Stewart has charge of
the Island and S. M. Rose is in charge
here. Fishing will probably continue all
this month and possibly longer is the
weather is favorable."

Beaver Island News: "Jas.
Donlevy made Charlevoix a visit
Monday."

"Miss Dart went to Grand Rapids
on a visit."

"Miss Mattie Cole returned home
after a visit at Charlevoix."

"J. Roberts who was cooperating
at Omena, Mich. returned home
Saturday."



Island Airways



With our friendly staff and our history of safe, comfortable, and competitively priced flights, we're ready to serve all your aviation needs. We offer Charter flights to a multitude of locations in the United States, as well as freight and passenger services to Beaver Island and Charlevoix. For more than 60 years we have been both Charlevoix and Beaver Island's committed aviation service provider. At Island Airways, you are more than just a passenger, you are a part of our family. Our airport services include maintenance, free wireless internet, rental cars, and much more.

1-800-524-6895 www.IslandAirways.com

"J. P. Maloney of Chicago, was called here by the illness of his mother."

"W. E. Stephens returned home from a hunting trip in the Upper Peninsula."

"Fred Sendenburgh returned home from Charlevoix"

"Married at Holy Cross Church last Wednesday, Joseph Floyd, son of John Floyd and Miss Florence McCafferty daughter of Barney McCafferty."

Charlevoix Courier Wednesday, November 20, 1912 "Gentlemen of the Jury: Peaine - John C. Gallagher; St. James - James Lee Winnie."

Charlevoix Sentinel Thursday, November 21, 1912 **Front Page Article:**

"SOME TROUT"

"COMMERCIAL FISHING ENORMOUS
-TROUT CATCHES BEST RECORD -
PROVES VALUE PROPAGATION"

"The fall catch of lake trout is a record breaker. The catches are far ahead of any previous record of the past

ten years, and the local packers and shippers are kept busy freezing or shipping the boat loads that come in daily. Over at the Booth dock they are short-handed and the big chief, Oluf Nordrum, was compelled, Friday, to don the oil skins and go down and help them out.

"The Booth Co. have two freezers, each of 9,000 pounds capacity, and they are both full to the roof, and tons upon tons are packed for the day in ice for short orders from the city markets, and still the stack is increasing.

"Some idea of the extent of the business may be gained by the record of the individual catches. In one 'lift' last week the Booth tug *Endress* brought in 6,800 pounds - nearly three and one half tons of trout. O'Niell's tug *Parmalee* is bring to the Booth dock from 3,500 to 4,000 pounds every lift. Beaver Island, which ships most of its catch here, contributes big figures to the Charlevoix receipts, and some of the

output goes to Green Bay by the Hart boats. The tug *Margaret McCann* takes the prize thus far in one lift last week with almost five tons.

"Over across the harbor, at the Beutel dock and warehouse, it is the same story. The freezers are full and big shipments are being made every day. This concern received eight and one half tons of trout from Beaver Island Sunday. This is the close season, and all these fish are being caught for spawn.

"Elegant big red trout are daily leaving Charlevoix in carload shipment, to say nothing of smaller special express and freight shipment to city markets. A review of the commercial fishing enterprises of which Charlevoix is the most important center in the straits region, demonstrates the indisputable fact that artificial propagation, as conducted by the U. S. Fish Commission, is of inestimable value to the industry, and that locally, it is an industry the contributes *continued on page 18.*



Ed Wojan Realty

Your Key to BEAVER ISLAND

Edward B. Wojan - Broker
26300 Back Highway
P.O. Box 86
Beaver Island, Michigan 49782



231-448-2711 or toll free 1-800-268-2711

view pictures on our web site at: www.edwojanrealty.com

ATTENTION HUNTERS!

Heller Brothers Hunting Camp

(the Northwest 1/4 of the Northwest 1/4 of Section 28, T38N R10W)

This 40-acre parcel is located with its northwest corner being the intersection of Fox Lake Road with Hannigan's Road. Although the address on the tax roll shows the hunting camp on this 40 acres as being Hannigan's Road, it actually has the driveway to the cabin a quarter mile south of the intersection on Middie Perron's Trail. On the 2006 Wojan-Cashman map you can see the dash line that is the driveway heading northeast off the trail to a clearing a little over two acres in size. This clearing shown in white on the map is surrounded by a beech and maple hardwoods forest. **Thousands** of acres of State land on the south side of Hannigan's Road are up against the east line of this 40 acres (see the green adjacent to this parcel on the Beaver Island map). The Hellers have 23 apple trees in the clearing that were planted years ago and are bearing heavily now. A small cabin on the south side of the clearing that will sleep six has a lot of mounted buck heads that were taken from this property. Viewing this cabin and its contents will prove to you that this is a fabulous hunting camp and big buck area. A second storage building is also on the property. (See the pictures on our website under Inland Acreage.) An additional 40-acre parcel southeast of this 40 might be available to purchasers of this hunting camp. The second 40 has State land all along its North, East, and South lines (look at the map again). Sellers want to sell this as soon as possible and are motivated. If you sign a binding buy and sell agreement with a good deposit before November 15th you will have a 2012 deer hunt from what will become your deer camp. For what is here this is really priced to sell at

\$145,000.

18. **One Hundred Years Ago**, from page 17.
very generously to the prosperity of the city.

"Whitefish, at this particular season of the year are not 'on', but in the later winter catches, which will perhaps be few and far between, we shall be sufficiently supplied with this luxury for the holidays."

Beaver Island News: "H. Frankle, our tailor went to Dallas, Texas, for the winter."

"Will Carnes returned home to Chicago after spending the summer here."

"Ben Langenhoff of Pellston, is here writing up Life Insurance." (Note: B. J. Langenhoff, Pellston, appears in the *Hotel Beaver register*; Oct. 24, 1912)

"The *Arbutus* was here Monday with a load of gasoline."

"W. J. Gallagher has charge of the spawn taking here."

"Miss Anna Gallagher and sister Sarah, went to Chicago for the winter."

"Bert Sterling returned home from Fountain with a crew of woodsmen for the B. I. L. Co. Camps."

"The *Susie Chipman* brought in a cargo of hay and is loading a cargo of lumber for Milwaukee."

"The *Str. Hart* called here Sunday and load 10 ton of Lake trout for the Booth fisheries at Green Bay."

"Capt. Allers and John C. Gallagher returned from a cruise to Charlevoix and cross village with a load of apples."

"Mrs. Tillie Graham is teaching school at Garden Island."

"Mrs. M. Roddy returned home to Escanaba after spending several months here."

"Thomas Saunders of Pentwater, spent a few days here last week."

"W. E. Stephens Pres. Of the B. I. L. Co. Went to Chicago on business."

"Homer Linsea of Morley Bros. of Saginaw, called on the trade last week."

"A musical was held at St. James Hall, Thursday Nov. 14th. Following is the program:

"Duet, 'Cavalry March' – Mrs.

W. Schied, Eva L. Gibson; Violin, Mr. W. Schied."

"Chorus, 'Hail Lovely Autumn' – School Children."

"Reading, 'Music as a Moral Force' – Julia M. Gibson."

"Violin solo, 'Melody of Love' – Mr. W. Schied."

"Duet, 'Two Juveniles' – Alexander and Clementine McCauley."

"Duet, 'Forget-Me-Not' – Margaret Bonner, Bertha Pratt."

"'Blossoms From Over the Sea' – Kathleen McCann."

"Trio, 'Tripping O'er the Lawn' – Alexander McCauley, Sigmond and Clement Graczyk."

"Duet, 'La Premiere Danseuse.' – Clementine McCauley, Margaret Bonner."

"Violin solo – Mr. W. Carnes."

"Chorus, 'Always Answer Mother's



Letter.' – School Children"

"Duet, 'Waves of the Ocean Galop' – Sigmond and Clement Graczyk"

"Song, 'Asleep in the Deep' – Mr. W. Schied."

"Violin Solo – Mr. W. Carnes."

"Song, 'Drifting With the Tide' – Soprano, Mrs. Gallagher, Julia Gibson; Alto, Eva Gibson, Mrs. J. H. Gallagher; Tenor, Mr. W. Scheid."

"Duet, 'Charge of the Ubian' – Eva Gibson, Julia Gibson."

"Violin solo, 'Il Trovatore' – Mr. W. Schied, accompanist, Mrs. W. Schied."

"Duet, 'Hausrenritt' – Miss Eva Gibson, Mrs. W. Sheid."

"Violins – Miss Helen Herrick, Mr. W. Schied."

"Violin Solo, 'I Wonder How the Old Folks are at Home' – Mr. W. Carnes."

"The population on the Island is increasing rapidly. Born to J. W. Green and wife, a son. Born to Dan D. Gallagher and wife, a daughter. Born to Peter D. Gallagher and wife, a daughter."

"Mr. and Mrs. Albert Biggie have gone to Freesoil for the winter, and will spend several days with her parents at Charlevoix."

"Ed Raskey returned from a visit at Manistee."

"Mrs. Pelkie returned home Monday from Big Rapids, Mich., where she had operation performed on her to remove a tumor (sic)."

"Earl Young of Charlevoix, spent Sunday here on business." (Note: *Earl A. Young, Charlevoix, appears in the Hotel Beaver register Nov. 18.*)

Charlevoix Courier Wednesday, November 27, 1912
No Beaver Island related news

Charlevoix Sentinel Thursday, November 28, 1912
Beaver Island News: "W. J. Gallagher went to Milwaukee on business."

"John Roddy of Escanaba is here visiting his mother who is very ill."

"Willie J. Gallagher and Miss Mary Duffy were married Wednesday."

"W. E. Stephens went to Manistee and Freesoil."

"A. T. Stewart of the U. S. Fish hatchery was here Saturday. The spawn taking closed Monday with good success over 20,000,000 trout eggs taken."

"Miss Dart returned home from Ludington Wednesday after a month's visit."

"Dan P. Boyle went to Charlevoix Monday on business."

"There were several butchers from Boyne City buying cattle last week." (Note: *Snow staying on ground. F. Protar*)



20. AUTUMN IN PARADISE
BAY



The terribly hot summer on the Island led many residents and visitors to assume the unseasonable warmth would continue into the fall, when it would be more appreciated. That seemed to be the way

things were heading, but then the temperature dropped, and just as the leaves put on their boldest colors high winds arrived and blew them all to the ground.

Yet while we didn't have the record-setting beautiful display of shades of

reds, there was plenty of beauty to be seen—in the skies, in the trees, and on the ground. The contrasts were magnificent – the red against the green, the vividly yellow tamaracks against deep rich blue in the sky.

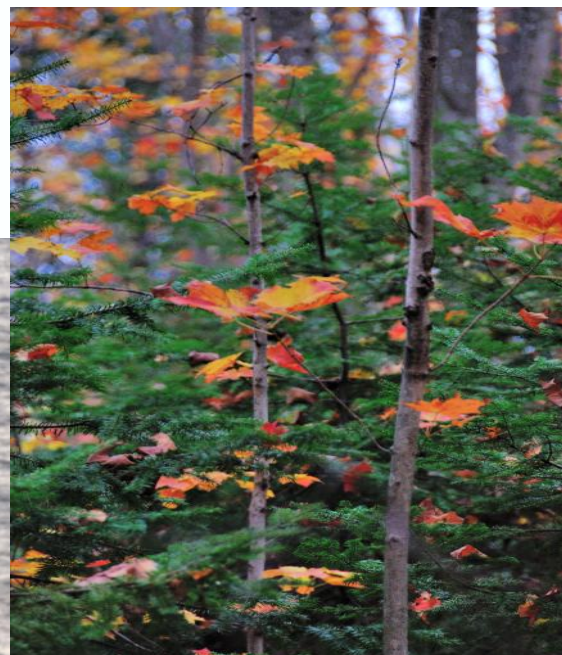




The Island had some rough days, but then, as usually happens, they were followed by a time perfect for getting out and seeing what we had. Taking stock of how lucky we are to be able to enjoy stunning scenery, good friends,

and a safe home. An economy on the rise after a few years of tumbling opportunity. Another factor in getting people out into the landscape was the intense local political campaigning—unlike anything on the Island within living mem-

ory. It was more pronounced than even the national scramble for votes. How wonderful it was to see the tranquil harbor, to get out on the back roads and observe the natural splendor. Nothing beats this. Nothing comes close.





'THAT FATEFUL DAY'

by Paul Welke

This is a story about my flying experience on a specific flight on a specific day which left such an indelible mark on my memory that it seems like it happened a month ago. In reality it occurred 37 years ago. The event that happened on this day which has become a benchmark in my memory is the sinking of the *Edmund Fitzgerald* on November 10, 1975. What occurred on this day which correlates with a common experience we faced was one of the worst recorded storms in Great Lakes history. My specific experience, which I relate here, is from memory and my pilot log books.

I departed Beaver Island for Charlevoix at 4PM in Piper Apache N2130P with no passengers. I returned before 5:30PM with two passengers and lots of baggage. My passengers were Marie and LZ Riegle, retired Island residents. Marie was always a nervous flyer and after this day all the more so. The weather on the flight to CVX was fairly typical for November, with gusty southwest winds, rain squalls, and occasional limited visibility. I was expecting a cold frontal passage sometime that evening.

On the return trip I found the weather had deteriorated considerably. Back then weather reporting and forecasting was in its infancy compared to today. Now we have AWOS (automatic weather observation systems) at most airports throughout Michigan, which can be accessed instantly by cell phone or internet with

up to the moment conditions. Today forecasts are also easily accessible and accurate. After departure I found flight conditions to be limited visibility with snow and moderate turbulence. There were no real

breaks in the weather to give a good idea of the wind speed and direction by looking at the surface of the lake. The only navigation during these years was the ADF (automatic direction finder), magnetic compass, and clock (WWII technology). The ADF was a low frequency receiver which homed in on an NDB (non directional beacon). CVX and SJX each had an NDB. This basically gave you a heading to fly which needed to be corrected for your estimated wind direction and speed. Your time or ETA was merely a mental calculation based on the known distance, aircraft speed, and your wind estimate. With the assumption that the wind might be switching around to the west or northwest, I took a calculated heading that would bring us across the southeast shore of the Island, using the SJX beacon. With a normal wind, this would take about 12 minutes. My actual time was 4 minutes longer, meaning I had picked up about a 50 kt NW wind.

When I got up to the north end of Sand Bay I broke out into good visibility with a view of the sunset in the west. As I approached the airport with improving visibility my stunned realization was that the winds were

now westerly about 70 kts (81 MPH). Fortunately they were blowing straight down runway 27. After landing I taxied into a tie down where my two brothers Mark and Carl were waiting to secure the aircraft to the ground. For those of you who remember Marie Riegle, she always carried a rosary while flying. Now you know why.

The next morning we heard the bitter news that the *Fitzgerald* had sunk with all hands. For some reason I always thought the sinking occurred during the early hours of the next morning, which would have been the 11th. Consequently I could never resolve the discrepancy in my mind of my log entry of 11/10/75 and the fact that she sank the same day.

Now I need to explain something, which struck me like a bolt of lightning. Two years ago in the fall of 2010 I began writing this story, thinking that the 35th anniversary would be a good time to do so. First I had to locate my old log books, which in itself was a challenge. Then late one evening on a dark and quiet night, I began doing research on the wreck of the *Fitzgerald* while sitting at the computer. My goal was to get a clear understanding of the order of events and resolve in my own mind the date discrepancy.

As I read the details leading up to the tragedy I came to the realization that the *Fitzgerald* did in fact sink in the early evening of the 10th, the same day as my memorable flight. As I continued my research, I came to the haunting realization that while I was struggling with a flight under very challenging circumstances on that fateful day 37 years ago, the 29 crewmembers of the *Fitzgerald* probably already knew their fates were sealed. At this point I closed up my log books, put away my notes, and did not revisit the subject for two more years until now.

Much has been written, studied, conjectured about this tragedy, but for myself every November when the "gales of November" are upon us, I shall always remember my harrowing flight, which ended successfully, unlike the fateful voyage at the same time only 70 miles away.



24. ON THIS DATE

Ten Years Ago The Beaver Head Light Station received a \$150,000 "Save America's Treasures" grant from the Department of Interior/National Park Service/National Endowment. The Beaver Island Community School was awarded a \$10,000 grant for genealogical research from the Michigan Council for Arts and Cultural Affairs.

The Beaver Island Rural Health Center Board formed a Construction Committee and announced plans for a community meeting to present the final architectural plans.

Thanks to Mike and Sharon Hurkman, the Beaver Island tradition of getting together in the evening to play instruments and sing was revived and given a new form: karaoke. Their interest started in Wisconsin before they moved here, and led them to invest several thousand dollars in a karaoke machine. Usually set up in the Hurkmans' barn on Paid een Og Road, it is portable enough so that with a few hours it can be moved to another location. They began to hold regular karaoke nights.

Twenty Years Ago The November 1992 *Beacon's* headline announced that Ross Perot had beaten George Bush Sr.

on the Island—by one vote.

The referendum to revoke the 200' rule for R-1 property was defeated by 70 votes. The two new Supervisors, Joan Petrak in Peaine and Neal Boyle in St. James, both said that their primary agenda was to improve the roads. Rich Gillespie, elected to the County Commission, also rated this as important, and said he would try to get a handle on whether Beaver Island was receiving its fair share of funds coming into the county (such as for a County Transit bus) as well.

The Beaver Island Community School supplied its Honor Roll, which included nine members of the second grade. The Chamber of Commerce printed the names of their 45 business members and 32 associate members; their "annual hunter's dinner" drew 76 people, who particularly enjoyed the elk enchiladas.

The Chamber's Tennis Court Committee listed the 40 donors who had contributed \$4,860 toward the project. The Beaver Island Boat Company stated that passengers were down by 5% but freight was up enough so that the total revenue was the same as the previous year.

Kevin White's performance at the

Denmos Museum received a glowing review. Plans were announced for a Community Christmas Tree, and a candlelight walk and caroling. Island Airways once again flew in over 100 pumpkins, purchased by Paul and Ellen Welke. Dana Gillespie (Hodgson) returned home from five weeks in Europe, glad to be back.

A profile of Murray and Wave Wanty included their story of enjoying a fish fry at the Parish Hall when a fire broke out in its kitchen. Instead of succumbing to panic, the tables were moved outside and the meal continued as the firemen arrived, went to work, and put out the blaze. In exchange they were invited to sit down and have a free dinner.

Thirty Years Ago People are still talking about the Halloween party at which Rick Speck dressed up as a Playboy Bunny and won first prize. Other winners were Laurie McGlocklin and Barb Rakowski. Other events of note were the CMU Orchestra performing (under the direction of Mike Scripps) at the Holy Cross Church, and the Sweet Adelines singing at the Regional Meeting in Flint. The volunteer firemen received more training. The Junior Class raised funds

EUGENE "GENE" MASSIMO BONADEO

Eugene "Gene" Massimo Bonadeo, 91, passed away peacefully October 14, 2012 at Charlevoix Area Hospital.

Gene was born on September 16, 1921 in Detroit, MI, the oldest son of Dominic and Faustina Bonadeo of Vigapozzo, Italy. He served in the U.S. Army Combat Engineers

Battalion during WWII. After his service, Gene returned to Detroit and graduated from Lawrence Institute of Technology. He was a certified professional civil engineer, and enjoyed a 32-year career as Head Engineer for the City of Detroit Water Board, retiring in 1979. Gene also served as past president of the Piemontese Italian

Club in Northville, MI.

In 1971, Gene and his family began what would be a life-long love of the beautiful "Emerald Isle," Beaver Island, where they would summer each year in the home they built on Sand Bay.

Gene loved to learn, lead, and teach. He enjoyed reading, mushroom hunting, baking bread, playing cards,



We are more than just a laundromat and carwash!

We store boats, cars, campers, household items, construction materials...

YOU NAME IT, WE CAN STORE IT!

We have affordable month to month rates,

9 month rates, or yearly rates.

Hurry, space is limited!

Call us for more info at **448-2235** or **448-2050**



We like to

Move It Movers

Drywall & Firewood

Spring Cleaning & Tree Removal

Trucking & Maintenance

Cottage Rentals!

PO Box 110

Beaver Island MI 49782

Phone: 231 448 2670

Dave Avery

by selling princess pine wreaths.

ET, the school biology experiment (a basilisk lizard), was the only hatching from a group of eggs. When it became apparent there would be no other births, the students proposed dissecting the eggs. Darrell Butler did the honors, after which a funeral was conducted for ET's stillborn brothers. KK Belfy made the casket and Amy Green created a tombstone. Robert Cole said a few words at the grave.

Obituaries included Ed Demorest, Peaine Township Supervisor who died in office, and Lil Gallagher's sister Mary Green, who had taught at the Greentown School in 1925.

Forty Years Ago After a school trip around the Island for the 1st- and 2nd- graders, and a tour of the Big Rock nuclear generating station for the High Schoolers, the 3rd- through 8th-graders had a two-day outing to Mackinaw City. Phil and Lil Gregg and Bill and Marge Wagner were the chaperones. They visited Fort Michilimackinaw, drove over to St. Ignace, and stayed at the Wilderness State Park, where the Conservation Officer gave a talk and showed a film about the park's endowment. The next morning, while eating a hearty pancake breakfast, the

Island kids saw a skink outside the mess hall window.

The friends of Milt Bennett, the Island's premier turtle man, finally caught him and forced him to ... celebrate his birthday, which he'd refrained from doing for almost ten years. To make up for it they threw him an old-fashioned Polish Party, a three-day affair starting with a turkey dinner followed by broiled steaks the next night and then a whitefish fry. Just enough tippling was done to float the food down. Bucky Vreeland and Joe Kilmartin were present for the entire shindig, but didn't remember a thing the following day.

Fifty Years Ago The *Beacon* reported that for the third time this year a Coast Guard boat was found washed up, this one, 54' long and in good shape, at Cable's Bay by Ralph Rutt and Milt Bennett. They wanted to move it to Lake Geneserath to give excursions, but Charlie Martin also wanted it. Before the dispute could be settled, the *Sundew* arrived and claimed it.

Karl Keubler, our Conservation Department's officer, had single-handedly (this is literally true) been improving the Township Airport, digging up stumps and hauling them

away in his pick-up. He had thinned the surrounding woods, improved the access road, and started to widen the N/S runway. While he worked he registered the planes to land. His list topped 400, and he felt he'd missed another 400 while attending to his many other duties.

In game news, 257 of the 458 allowable deer permits were issued. The previous year's stocking of Fox Lake with rainbow trout was so successful that this year 3,000 brown trout were added. Fishermen were warned that when baiting up, if they were in a boat they should kneel down and apply the worm to their hook under the seat, or if they were on shore step behind a tree, because the new fish were desperately hungry.

Two bold hunters arrived on the *Beaver Islander* and were driven to Donegal Bay, where they launched their 12' motorboat for a sojourn on High Island. Two days later they did not return to the prearranged pick-up point, and people began to worry. It turned out their motor quit, so they attempted to sail back, using a blanket for a sail. Having no oars, they were unable to steer, but luckily were blown ashore near Bonner's Landing.

solving puzzles, playing bocce ball, fishing, and Lake Michigan. He was a devout Catholic.

Gene was preceded in death by his devoted wife of 58 years, Josephine Mary Picelli. Left to honor Gene are his brother, Henry Bonadeo (Vivian) of Tarpon Springs, FL; his son, Patrick Bonadeo of Beaver Island; his son,

Jon Bonadeo (Suze) of Beaver Island; and daughter, Teresa Bonadeo Charnell (Ray) of Asheville, NC. Gene is also survived by his grandson, Spencer Bonadeo, of Ann Arbor.

The immediate family would like to extend their sincere thanks and gratitude to all of the family, friends and caregivers who lifted us during this

time of need.

A memorial and celebration of life is planned for a later date on Beaver Island. In Gene's memory, donations may be made to the Preservation Association of Beaver Island for the Beaver Island Community Center: 26215 Main Street, Beaver Island 49782.



*Offering Quality Architectural Design Services to
Beaver Islanders for over 25 Years*

1514 Mifflin Street
Huntingdon, PA 16652 Phone: (814) 643-5053
greglarson1@verizon.net Fax: (814) 643-0972

WENDY S. WHITE, D.D.S. BEAVER ISLAND FAMILY DENTISTRY



P.O. Box 218
37304 King's Highway
Beaver Island, MI 49782
(231) 448-2100
Hours By Appointment



Experience the Difference!

Surround Yourself With Service, Style, and a Smile.

Daily flights to Beaver Island in modern, well-appointed aircraft piloted by experienced aviation professionals.

Stunning Lighthouse & Fall Color Air Tours.



See the beauty of the Beaver Island archipelago as you have never seen it before.
(1/2 hr and hourly tours available)

Aerial Photography - Homes, property, & businesses

Great Feature! - Car Valet Service to or from Boat Dock

For the latest news and specials please check out our website and on Facebook.



Fly Right!



Phone: 231-237-9482 or 888-359-7448
Beaver Island Local: 231-448-2089
WWW.FRESHAIRAVIATION.NET



06918 Old Norwood Rd.
Charlevoix, MI 49720

Located next to the Ford Dealership off US 31.
Just a half mile south of the airport entrance



Sometimes Halloween is more fun for parents and grandparents than for children, and that was the case this year. The oldsters outdid themselves in dressing up their tykes and in restraining themselves from





dipping into the kids' treat bags as they were driven around town to lit-up homes, the Boat Shop's Spook House, and the Trunk-or-Treat held inside the Gregg Fellowship Center at the Christian Church. Everyone had a great time!



St. James Marine Co.



Serving Beaver Island and the Great Lakes for your hauling and freight needs. Delivery to your location available.

St. James Marine Co. hauls:

- general freight and cargo
- heavy equipment
- stone products
- cement products
- topsoil
- container shipping (small, medium, large)
- boats
- building materials
- modular homes
- trailers
- automobiles
- semi-trailers
- junk cars
- garbage dumpsters
- and much more!

In addition, St. James Marine Co. executes on-water fireworks shows, barge hauling-services for logging, commercial assistance towing, dust control, salvage search and diving, working boat repair, dredging, marine improvement and dock repair.



You call, WE HAUL!

Phone: (231) 448-4000 Cell: (231) 838-0254

www.stjamesmarine.com

28. A MEMORABLE TRIP TO GRANDMAS FOR THANKSGIVING

by Larry Hansz

It is time to remember some of those old time Thanksgiving dinners with loved ones. Think back to your memorable Thanksgiving Days with parents, relatives, and family, many of whom are gone forever and are missed daily. We wish we could go back and relive those times. This little story of a trip to the grandparents for Thanksgiving was certainly memorable for our family though certain parts probably would never like to be relived.

Both Maureen and I were working in Traverse City. The kids were still quite young: Brian 12, and twins Kevin and Colleen 9. Add a large white standard poodle, Penny, and that was our family. My parents lived in Winona, Minnesota, which was drive of about 650 miles on mostly two-lane highways. No matter whether we drove up through Michigan's U.P. or down through Chicago and then up to Winona, it was an exhausting killer drive, one where we would hear *Are we there yet?* at least fifty times. Our whole family sailed; the good weather months were savored so our trips to the grandparents usually were at either Thanksgiving or Christmas. Is the picture becoming a little clearer that weather might be a factor in this story?

On several trips to Minnesota, in order to cut down the driving and for tired parents to get some rest en route we took a ferry across Lake Michigan. At either Frankfort or Ludington one could board a ferry, relax all the way across the lake, and reduce the total trip by 150 miles. I had to work the day before Thanksgiving and the kids had school. So with everyone tired and a very short time to get to Winona, we packed our land boat, a huge Impala station wagon, drove thirty five miles to Frankfort, and boarded the Ann Arbor Railroad car ferry *City of Milwaukee* about 9 pm. The crossing would be nothing new to us as we had taken the ferry several times before. However, this time was different. A crewman would not let our dog accompany us to the passenger lounge as we had always been allowed. He was adamant that the dog must stay in our vehicle. The dog had always slept on the

floor in the lounge without a problem and on this particular trip there were less than fifteen passengers on the whole ship. It was his rule or get off and drive so Penny stayed in the car alongside a few other vehicles and many rail cars.

The rail car loading is done carefully. First a few rail cars are loaded on the port side causing a 10-15 degree list to port; then cars are loaded on the starboard to balance the ship and a few more causing a list to starboard. The process is repeated, port-starboard-port-starboard, until twenty-two rail cars are aboard. Then trucks and passenger vehicles are loaded. So passengers may board the ship early but they might wait two to three hours before actually getting underway. So the dog stayed in the car; we boarded and were each soon asleep, stretched out with blankets and pillows on the couches which are bolted to the floor in the lounge. We felt nothing when the ship left the dock.

A few hours later I bolted awake sliding back and forth on the shinny vinyl couch covering. The wind was howling; the waves were high; the ship was rolling like a drunken sailor. Roll to starboard and I would slide to one end of the couch; fifteen seconds later a port roll and a quick slide to the other end of the couch. I was lucky having a couch which was bolted athwartship (side to side of the ship). Those sleeping on a fore-aft bolted couch soon woke up on the floor. Within two or three minutes all five of us were awake; all three kids were vomiting in a couple minutes; the lucky ones made it to the head before their ugly event. This went on for about three hours while we prayed each mile away toward Manitowoc, Wisconsin.

We docked safely at Manitowoc about 3 am and debarked exhausted. We waited and waited for our car to be offloaded. We saw several of the crew talking, waving their arms, and pointing at us. What did we do? We did nothing but our poor dog had really done something! Finally when our car came off the ship the driver got out and took with him a tarp which he had been sitting on. He gave us an ugly look that should have warned us. Penny had been so fright-

ened by the ship rolling and the creaking-groaning of rail cars that she had diarrhea ALL OVER the car: from one end to the other! No wonder none of the crew wanted to drive off our car! What do you do in Manitowoc, Wisconsin at 3 am with a carload of dog crap and 400 miles to drive? We threw blankets on the seats and went to an all night gas station and hosed out the inside of the car while the whole family shivered in the 20 degree temperature. The dog also got a freezing cold bath too. When it was all done we still had to drive with the windows down and the heater running full blast. The carpets squished with water. It was memorable! On to Winona! Only 255 miles to go!!!

The blue Impala wagon knows the way. We are on the road. I had worked all day. Maureen only had to be Mom and housekeeper the day before so soon she was driving (this statement asks for trouble). I was stretched out asleep with the twins in the back of the wagon with the seat folded down. Hopefully I would wake up in Winona and then go back to bed in my childhood bed at my parents, but that was not to happen. Somewhere in the dark middle of Wisconsin I bolted awake again this time laying on my back with a blue rotating cop light flashing through the car. What'd you do? How fast were you going? Maureen didn't know what she had done. It turned out there was a tail light out and the trooper took that opportunity to check us out. It was probably good that he stopped us. Brian was to sit in the front with Maureen and help her stay awake. When I drifted off to sleep they were singing *Go tell Aunt Rhody* and *99 Bottles of Beer on the Wall*. That did not last long; Brian was soon snoring while Maureen fought to stay awake. The trooper escorted us off the freeway to another all-night gas station where I had to unload half of our baggage and change a \$1.59 light bulb. Load up and hit the road again.

Finally sometime in the morning we arrived and were met at the door by Grandma and Grampa with hugs and kisses; everyone was talking at once. Down in the basement went the dog and

Maureen to finish the only partially complete 3 am dog bath with heavily scented shampoo. Then it was to bed for the adults. The grandparents wanted the kids all to themselves anyway so we had several hours under the covers to try to catch up on sleep.

Late in the afternoon the aroma of turkey was wonderful; it was enough for us to start drooling upstairs. Soon we were all around the table while my father asked blessing on the family, food, and all. The food was, as always, unending: a huge turkey, dressing, glazed sweet potatoes, mashed potatoes, gravy, green beans, cranberries, and more, followed by pumpkin pie with whipped cream. It is almost impossible to move following a feast like this. However my dad and I soon were doing the dishes; we found it an opportunity to have a nice talk alone. Everyone else seemed comatose. When everything was finally cleared and put away it was almost time to go back to bed.

The Friday activities included some of the same things we do every time we visit Winona. We visit the Winona Glove Company for its annual Day-after-Thanksgiving sale. The kids were not excited seeing the 150 different types of gloves and socks made by WGC, so soon it was off to the Winona Knitting Mills. A sweater store is not exciting for kids either but somehow Maureen found it possible to spend a couple hundred dollars. Then it was on to the home of the Watkins Company, a purveyor of kitchen indulgences, housekeeping supplies, and more. Maureen could get lost in this place but it is not fun for the kids and I, so we leave her for awhile and along with my dad head down to the Mississippi River grain loading dock.

It is interesting to see whole grain trucks tilted up to about 75° on a hoist and emptied in seconds. On the river side of the elevator tons of grain flow down the chutes into waiting barges destined for down river ports and overseas.

We finally pick up Maureen and head home to graze on piles of left-over turkey and nap. After the nap it's more left-overs. Saturday the grandparents had a surprise project for me, but first a

Winona trip tradition: a Saturday morning visit to Blodow's Bakery. It was located in Polish Town at the east end of the city and worth the trip. The kids inhaled the place; the dozens of choices of tarts, donuts, and sweet buns was unending. More calories to take home on our seats from Winona!

The project was there when we returned from the bakery: the small (very small) bathroom needed to have the wallpaper replaced. My mother bought wallpaper at the Dollar Store or a resale shop or something like that (this doesn't sound good right from the beginning). First I must strip the old paper. This was not easy; every last particle had to be scraped off with a single edge razor: the glue was tenacious. Then sizing was applied. Finally The Piece of Resistance: the pre-pasted wallpaper was virtually without paste. No wonder it was a sale item! Each piece had to be cut, trimmed and re-cut around mirrors, outlets, lights, and other bathroom equipment. When finally soaked and applied on the walls it would start peeling down from the ceiling and up from the counter. There were hundreds of bubbles. A squeegee simply moved them from one spot to another all while the paper again started peeling down from the ceiling. I actually went out once in disgust (actually to get a beer) and slammed the door behind me. I heard one piece of paper roll up like a spring-loaded window shade. When I opened the door another piece of paper fell off. I gave up, washed the walls, and told my mother the room would have to be painted. And then I sat down and had a few more beers. The day ended with my parents treating us to dinner at the Golden China Restaurant and a drive up the western bluffs to the Garvin Park overlook, everyone thinking we were all in the last hours of our short time together. We don't want it to end so soon.

At zero dark thirty Sunday morning we load up the big Chevrolet. Everyone lines up at the door for hugs and re-hugs. My mother presses on us five pounds of left-overs plus sandwiches for the drive. After the kids and dog have their last pee

we load into the car and it will not start. Of course, it is ten below zero and has snowed about eight inches overnight. It is not the battery; the engine is turning over good. So I look at everything, wiggle this and that, and then have a eureka moment when I think of using ether starting fluid. So with Maureen at the wheel and all the kids looking on I spray a good dose of ether directly into the throat of the carburetor. When Maureen turns the key there is a huge backfire; flames leap up eighteen inches out of the carb, and I smash my head on the hood trying to get out of the way! Kids scream! Maureen screams! The dog barks and I do another stupid thing: scoop up snow and throw it into the carburetor. At least the fire is out and everyone troops back into the house where my mother starts breakfast for everyone except my dad and I who are outside in the 10° wind holding blow-dryers on the carb with hopes it may soon dry out. It takes long enough for the family to have a big breakfast and finally the difficult car will start. So after a second round of hugs and kisses we are down the road to the highway headed for Traverse City.

The long ride is quiet, each with his or her own thoughts and wishing we could see grandma and grampa more often. We love them and worry how much longer we will be able to enjoy Thanksgivings together. We remember holidays when we were kids and they were young; we thought the good life together would never end. Soon our holidays included grand children; the grandparents were made young again; they loved it! We all loved it. Time is moving fast!

Our parents are gone now. Now we are the grandparents and enjoying holidays with our families, but we still have in the back of our minds the memories of the times past. I miss them. I would hose out dog crap from the car at 3 am; I would be seasick all night on the ferry; I would try to wallpaper hundreds of tiny bathrooms with defective wallpaper; I would drive thousands of miles to have that turkey dinner with my mother and father again. Cherish the time together you have.

30. SCHOOL BOARD MOVES FORWARD IN PLAN TO REPLACE SUPERINTENDENT/K-12 PRINCIPAL

The Beaver Island Community School Board of Education is on target with its succession plan to replace long-time superintendent/K-12 principal Kathleen “Kitty” McNamara who will retire in June 2013.

In the next phase of the process, which the board put in place after McNamara announced her pending retirement two years ago, the school board is finalizing a hiring brochure and has now set a new schedule for interviewing candidates for the position. The hiring brochure is expected to be distributed electronically and through the US Postal Service in the very near future according to the Charlevoix-Emmet Intermediate School District leadership team which is facilitating the search for the board.

“The board is very serious about its role in selecting the new administrator,” said board president Jessica Anderson. “We recognize the final decision on whom to hire lies with the board, but our candidate profile – the qualities we are seeking in our next school leader – has been defined, in part, through input from parents, students and community members.”

At its October work session, the board approved the following language for its hiring brochure. Beaver Island

Community Schools is seeking a strong, passionate leader who can be described as:

- A visionary leader with the ability to engage all stakeholders
- An individual who is dedicated to educational excellence and to the success of all students
- An individual who knows and understands current trends in curriculum and instruction and technology and is committed to the implementation of educational “best practices”
- An excellent communicator (speaking and listening) who is proactive and who demonstrates excellent interpersonal skills
- An individual who is visible in the schools and who participates in school and community activities
- An individual who exemplifies the highest levels of honesty, integrity, trust and fairness
- An individual who treats all people equally and with dignity and respect
- An individual who sets high expectations for his/herself and others and accepts responsibility for the results
- An individual who possesses a minimum of master’s degree in administration and who has

administrative experience

At the same meeting the board approved the following tentative timeline for the search:

- Application must be received by 4 p.m., November 30, 2012
- Board screening: week of December 3, 2012
- First interviews: week of January 7, 2013
- Second interviews: week of January 14, 2013
- Selection of successful candidate: week of January 21, 2013
- New administrator/superintendent assumes responsibilities: mid-June 2013

The board expects that this timeline will allow them to get ahead of other searches and will allow time to do a second round of interviews if the first round does not draw in the right candidate. All applications will go directly to the Char-Em ISD search team who will check all references and gather information on all candidates. The ISD search team will then share information about all of the candidates with all of the school board members at the same time in closed session. The school board members will then select those candidates they wish to interview. All interviews will be held in a public session.

JUST THE FACTS, MAM

At times people ask about the GLE surcharge, frequently posing this question: haven’t we paid off the cable yet? Or, shouldn’t we get a rebate when electricity flows the other way?

The Beaver Island Association looked into this, and recently reported

what it learned in its member newsletter, *Island Currents*.

In 2000 a new three-phase cable and a back-up generating station were installed at a cost of \$4.9m, of which 60% was ascribed to Beaver Island—\$2.8m. With 1,120 meters presently on

Beaver Island paying \$10.25/month Island surcharge each, rather than the projected 1,600, only \$137,760 comes off the bill each year. So early in 2023 we might finally catch a break.

For more on the BIA, see www.beaverislandassociation.org

IN MEMORY: COLLEEN SUE CURRIER “THE FLOWER LADY OF CHARLEVOIX”

Colleen Sue Currier, “The Flower Lady”, of Charlevoix, died Sunday, Sept. 30, 2012, at Boulder Park Terrace in Charlevoix. She was born April 21, 1961, in Detroit and was raised by her parents, Desmond P. and Margaret “Peggy” I. (Left) Currier in Birmingham. She graduated from Seaholm High School in 1979. She moved with her family to Charlevoix, and attended Northern Michigan University. After

college, Colleen lived in Saint Petersburg, Fla. for a short time before returning home to Charlevoix.

Colleen worked in several flower shops before opening her own shop in Charlevoix, Floral Designs By Colleen, that she ran for over fifteen years. For decades she advertised in the *Beacon* and provided most Island bouquets.

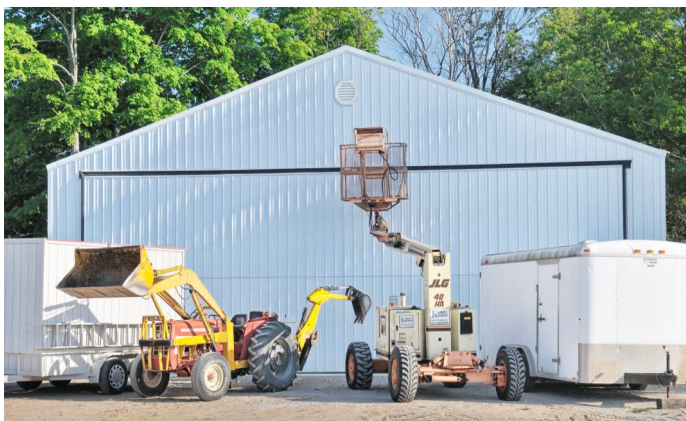
She was a member of Saint Mary’s Catholic Church in Charlevoix.

Colleen is survived by her siblings, Irene (Richard) Tanghe, Charlotte Currier, Maureen (Paul) Court, Joseph Currier, William (Maggie) Currier, and Vincent (Kim) Currier; many nieces and nephews and great nieces and nephews; and all of her wonderful friends. Colleen’s longtime boyfriend, Gary Cross, preceded her in death in March of 2011. Burial took place at Holy Cross Cemetery.



Larry Laurain Construction Licensed and Insured

Custom Home Construction
Remodel • Additions • Garages



Free your inner architect and enjoy
a worry-free project by working with
Larry Laurain Construction.
Custom New Homes
as well as quality additions and remodels.

231.448.2055

McDonough Construction is Beaver Island's Insurance Claim Servicer!

Please call us before you call them!
Insurance services for water, wind and fire damage.
We have worked with several insurance adjusters on
Beaver Island. We'll work with you to get the best quote!



McDonough Construction, Inc.

Contact Kevin B. McDonough

Home: 231.448.3038 Cell: 231.675.5444

www.mcdonoughconstructioninc.com



Restoring Your Investment
231.448.2336
Fully Licensed & Insured



SPECIALIZING IN:

- New Construction
- Residential/Light Commercial Additions
- House Wrap/Exterior Water Management
- Windows/Doors
- Custom Decks
- Kitchen/Bedrooms Remodels
- Roofs
- Seamless Gutters/Under Deck Systems
- Water Damage Repair
- Geothermal Systems
- H.V.A.C and More

Complete remodel of beautiful summer home on Angeline's
Bluff - roof, deck, interior, exterior, from the foundation up.

Owners/Operators

Preston Herren

Cell: 989.763.2342

Email: prherren23@hotmail.com

Builder License #2101182728

Lead Safety #R-1-18521-10-00888

Paul Johnson

Cell: 231.881.6076

Email: shorelinebuild@gmail.com

Builder License #210136824

H.V.A.C. License #7111566



BEAVER GEMS, INC.

- General Contracting
- Specializing in commercial construction on Beaver Island
- Homes
- Crane Service
- Projects from remodeling to cell towers!



Call for more info: **231-448-2235**

email beavergemsinc@tds.net fax 231-448-2740

web www.beavergems.com



Beaver Island Rural Health Center



Beaver Island Community Center



CMJ Gillingham Academic Center

ROBERT'S JOHN SERVICE, INC.

Doing **Quality Work**
for over 18 Years



Licensed and Insured

- ✓ Plumbing
- ✓ Heating
 - Radiant In-floor Heat / Hydronic
 - Forced Air
 - Geothermal
- ✓ Water-right / Water Conditioning
- ✓ House Opening / Closing
- ✓ Vac-u-flo / Central Vacuum Systems
- ✓ Great Lakes Hot Tubs dealer — sales and service. Please call for a quote.



ROBERT'S JOHN SERVICE, INC.

(231) 448-2805

32.



TYING THE KNOT

Sarah Brynaert of Romeo Michigan and James MacLean of Harbor Springs Michigan were married on August 18th, 2012 in Harbor Springs. The marriage was officiated by Judge Kathleen MacDonald of Groose Pointe, Michigan. The bride is the daughter of Gregory and Patricia Brynaert of Romeo, Michigan. She is the granddaughter of Walter Wojan of Beaver Island and Frank and Lucille Brynaert of St. Clair Shores. The groom is the son of Josephine MacLean of Harbor Springs. The bride and bridesmaids arrived via the father of the bride's boat. Sarah was escorted by both her father, Greg Brynaert, and brother, Taylor

Brynaert.

Following the ceremony was a reception at Boyne Highlands.

The bride is a graduate of Romeo High School and Grand Valley State University. She is currently a high school teacher at Concord Academy of Petoskey and working on her Masters degree through Central Michigan University. The groom is a graduate of Harbor Springs High School and Northern Michigan University. Currently, James works as a sommelier at the Bay Harbor Yacht Club. The couple plans to honeymoon in Ecuador and the Galapagos Islands. They live in Harbor Springs, Michigan.



AN ENGAGEMENT

Amanda Mae Bodjanac, daughter of Michael and Polly Bodjanac of Green Bay, Wisconsin and Ryan Walter Wojan, son of Edward and Connie Wojan of Beaver Island, Michigan are pleased to announce their engagement and plans to marry on July 13, 2013 at 3:00 PM in Charlevoix, Michigan.

Amanda is a 2011 graduate of UW Oshkosh with a BSN in Nursing and currently works as a Registered Nurse at Northwestern Memorial Hospital in Chicago, Illinois. Ryan is a 2004 graduate of University of Michigan with a degree in English, and minor in history and works at Acorn Property Management in Chicago, Illinois.

BOODLE WINNERS

There were 94 entries this year, more than last year. The top three winners in order were: Travis Williams, Conner Williams, and Terry Cooper (runners); and Yvonne Stork, Michael Rysinger, and Jeff Stone (walkers).

The organizers thanked all those who participated, and agreed that next year they would allow, between the runners and walkers, people on skateboards pulled by their dogs. The following year Segways will be added.



BEAVER ISLAND COMMUNITY CENTER

At the Heart of a Good Community

Check out upcoming Events, Movies & Activities at
www.beaverislandcommunitycenter.org
 and join us on Facebook!

FALL & WINTER HOURS
Mon – Fri 11:00am – 5:00pm
Sat 11:00am – 9pm . Sun Closed!
 email: bicommunitycenter@tds.net
 phone: 231 448-2022

Saturday "Double Feature Movies" * 3 & 7 pm
 *Check the Community Center & website for full listing

HOLIDAY & ADVENT WREATH-MAKING, CAROLING & CANDLE/ORNAMENT-MAKING COMING UP!!! Stay tuned to the Community Center for more details!



Third-year Sponsor
shamrockrestaurant.com

Events



Friday, November 9th 7:30pm
Claudia Schmidt & Dean Magraw

Come experience yet another unique Claudia performance, featuring the stunning artistry of guitarist Dean Magraw. Dean has appeared on many of Claudia's Red House recordings and was featured on her Live at the Dakota CD. "We have a phenomenal chemistry that must be experienced live!" says Claudia. Tickets: \$20

www.cladiaschmidt.com
www.deanmagraw.com



Second-year Sponsor
www.bibco.com

Special thanks to our sponsors and supporters: The Shamrock, Beaver Island Boat Company, Beaver Island Lodge, The Brothers' Place, Dalwhinnie Bakery & Deli, Hogarth's Pest Control, McDonough's Market, L&L Carpet Cleaning, Beaver Island Gardens, Beaver Island Marina, Charlevoix State Bank, StillPoint Photography, & Island Energies.

WELKE EXCAVATING

SCREENED TOPSOIL

CALL 448 2374

34. TERMINAL

In late October Mike Scripps announced that the Beaver Island Airport Commission has received word from Mead & Hunt, the Municipal Airport's consultants, that a \$650,000 grant to build a new township airport terminal in 2013 has been recommended by the MI Aeronautics Commission.

Funds resulted from a change in Michigan's tax laws with June 2012's House Bill 4025, Act 226, which allowed some revenue to be distributed by MI Aeronautics. Construction is to start in 2013. The Townships will jointly have to contribute 5% – \$32,500. More details will be made available at the Airport Commission's meeting on November 17th.

Mead & Hunt has been invited to come to the Island for a public meeting on November 28th. Questions about the terminal design, placement, use, and total cost will be addressed at that time.

This represents a considerable achievement for a group of hard-working, occasionally embattled volunteers.

JUDIE LEE GARTHWAITE

Judie Lee Garthwaite, 64 of Saint James City, FL passed away on Tuesday, October 16, 2012. She was born on August 30, 1948 in Frankfort, Michigan. Judie moved to Saint James City in 1989 coming from Beaver Island. She worked as a Hospitality Specialist at the Tarpon Lodge Restaurant in Pineland for many years. Judie enjoyed everything to do with food and was a gourmet cook at home. She enjoyed traveling, camping, nature, riding her motorcycle, flying with her husband. She was a super co-pilot.

She married Dick in 1977.

It was already his hunting and vacation spot. They started spending more time on BI and in 1989 they made it their home for 6 months a year. Dick, being a pilot, would fly back and forth to Florida. She was a great copilot. She

started working at Stony Acres as a prep cook. She liked meeting people, so started waitressing. She then went to the Beaver Lodge, and worked there for many years. She had stage four renal cancer, and it finally caught up to her. Cremation is planned and she will be coming back to Beaver Island.

Judie is survived by her loving family including her husband of 35 years, Robert "Dick" Garthwaite; daughters, Michelle Pracher, Tracy (Bruce) VandeWeg; grandchildren, Gage, Jacob, Riley, Traey, Erin; great-grandson, Felix; mother, Joyce Akerman; sisters, Jackie Kish, Joyce Lynn Conatser; brother, John Akerman; stepdaughters, Kathy Hoogterp and Susan Bunker; she is preceded in death by her father, John Akerman and granddaughter, Jonel Hoogterp.

EB LANGE

Ethel Belle Lange died Sept. 25 peacefully with her family near, at St. Joseph Hospital in Ann Arbor, a few days after suffering a stroke. She had recently

been a resident of Chelsea Retirement Community. The family is planning a Memorial Service for her on the Island probably in the spring.



SHAMROCK

Restaurant & Pub

Beaver Island, Mi



FOR SPECIALS & EVENTS
CHECK US OUT ON FACEBOOK &




SHAMROCKBARRESTAURANT.COM

THE ISLAND'S BEST STAFF & SERVICE





FREE WI-FI . OPEN 7 DAYS

www.ShamrockBarRestaurant.com

E.J. Hodgson Enterprises, Inc.
Shamrock Restaurant & Pub 448-2278
Harbour Market 448-2950 • Beachcomber 448-2469



contractors

Commercial & Residential Construction
specializing in custom wood homes

Remodeling ■ Roofs ■ Decks

Ernest Martin
Beaver Island Office

Phone 231-448-2074 ■ Fax 231-448-2047

email: kmcontractorsllc@gmail.com
web: www.kmcontractors.net

In 1933, the boat laid up before Christmas – and before all the winter's supplies had been brought to the Island, in particular the material needed to replace the Little Red Schoolhouse, which had burned, with a new school at the south end of King's Highway. Work was slack, this being a depression year, and the construction of the school would provide jobs at least until fishing could start again in the spring.

The ice had made, and was thick with little snow. It was decided that the only thing to do was to go after the needed materials.

With Emmett McCann in charge, the group was made up of five men, two trucks, and two bob sleighs. A compass course was laid out for Cross Village and at 8:30 a.m. on or about the 15th of February the group set out.

Charlie Martin and Stanley Floyd went ahead in an old Dodge touring car, converted to a truck and towing two bob sleighs. It was their job to sound the ice and set out pieces of brush every half

mile to mark the route. Bringing up the rear was Patrick LaFreniere, his brother Archie, and Emmett McCann riding in a 1½ ton Ford truck with several barrels of salted fish on the back they hoped to sell on the mainland.

The going was good, for the ice was smooth, and by noon they were within six miles of Cross Village. Here, however, they ran into rough ice and could not get through.

They encountered some fishermen from the mainland, who advised them there was no route through, but told them cars were getting out on the ice from Charlevoix. So the group headed south, skirting the rough ice, looking and praying for a passage.

Everything was okay until they were within site of the Charlevoix water tower, where the lead truck hit a large crack in the ice and came to a sudden stop. The bob sleighs behind it kept coming, ramming the truck and puncturing its gas tank. Charlie put his finger over the hole, at the same time yelling at Stanley to find something to fix it with. All

that could be found was a paper sack with the remains of their lunch, including a couple of fig cookies. They mashed the cookies up and used the fig paste to plug the leak, tearing a handkerchief into strips and tying them together to bandage the wounded tank so their patch wouldn't fall out.

They jacked up the truck and got it out of the crack, and were on their way. Fishing shanties were popping into view now as they neared Charlevoix.

A man by the name of Harl Schneider, who at that time was flying mail to Beaver Island, spotted them and made several low-level runs to guide them toward the route to the beach. A ridge of ice and snow prevented them from driving up off the lake, but soon a large number of Charlevoix residents came with shovels and spuds to clear the way. Prohibition had ended and the taverns of Charlevoix did very well that night, as they did the following night also.

On the third day the fish were sold and supplies loaded, but all efforts to have the gas tank welded *continued on page 36.*

VAN & GEO RENTAL

PICK UP AT BOAT OR PLANE



Multi-Day Discounts
4 HR. Rates available

Call: 448-2300

BEAVER ISLAND MARINA

E-MAIL: Pat@BeaverIslandMarina.com

Beaver Island Marina



At Your Service:
Transient Slips
Fuel - Charts - Shipstore
Auto & Boat Repair
Licensed Mechanic
Storage & More

Gas Station and Car Rental
Gold Card Savings

Check out our ship store: Gifts, Bait, and More.

25860 Main - P.O. Box 76 - Beaver Island, MI 49782

MARINA (231) 448-2300 - FAX (231) 448-2763

AUTO / REPAIR SHOP (231) 448-2307

www.beaverislandmarina.com

failed, as they could find no one to do it. It hadn't leaked a drop anyway so they were soon on their way back to the Island.

The route they had so carefully marked out was now to the north of them, but the ice was good so a course to the Island was laid out in a straight line. Several miles had clocked off when Charlie stopped his truck and signaled

for the big truck to stop, which was now pulling two bob sleighs loaded with lumber. They had come upon a broad crack in the ice, about 30' across. It had refrozen but between the broken pieces the ice was just a little over 1" thick.

After standing around and shivering for a few minutes, Charlie and Stanley decided to try their luck. They got their speed up, and shot over it with no problem. Getting out, they waved for

their friends to give it a try.

The men on the wrong side of the crack talked it over as the encouragement turned to ribbing. Finally Archie and Emmett got out of the big truck and stood off about fifty yards, while Patrick drove the big truck and sleighs in a wide circle to get up as much speed as he could before hitting the crack. Standing on the running board just in case, he hit the crack at about 45 mph. The ice



To place an ad that will be seen with the Island's largest circulation, please call (231) 448-2476 or email beacon@beaverisland.net



SAND BAY COTTAGE - ON THE LAKE WITH GREAT BEACHFRONT: Sleeps 6. Two bedrooms and loft, 1 bath. Modern kitchen, fireplace, washer/dryer, grill. Deck and screened-in gazebo. No pets, no smoking. \$800/week. Call Sue on (231) 448-2670 or cabinbythelake1@gmail.com



Long Term Storage Summer & Winter by the Month, Season, or Year/sq ft

Boats & Water Craft
Snowmobiles
Recreational Vehicles
Building Materials
Household Goods, etc



SAFE, INSIDE & DRY
Reserve your space now

2 miles from town on Kings Hwy
Call 231-547-2393

REAL ESTATE, FOR SALE

WANTED: REASONABLY-PRICED 10 - 40 ACRES ON ISLAND - Partially cleared, dry, with or without house and barn. Harley (989) 661-2354.
FOR SALE BY OWNER: 40 ACRES INTERIOR WOODED, HUNTING - 32370 Kings Hwy. Great hunting area w/combo wetlands, no immediate neighbors, and State Land across road. Nestled next to Jordan River swamp/headwaters. Deer runs thru w/cedar forage. Includes fully-insulated, roughed-in, 2-story structure w/rough-electric ready for generator supply (generator included). No well/septic, but outhouse supplied! Make offer! (231) 448-2454.

REAL ESTATE, FOR RENT

COTTAGE ON BEAUTIFUL FOX LAKE - One bedroom, one bathroom, full kitchen, laundry with bunkhouse. Cottage sleeps six and is 20 minutes from town. Dock, rowboat and deck overlooking the lake. \$700/week. No smoking and no pets please. Contact Sue at cabinbythelake1@gmail.com

HAGGARD's SUMMER RENTAL HOME - Overlooks Paradise Bay across from the Maritime Museum. Sunset view of harbor and village of St. James is a winner. Comfortable custom home sleeps 8-10. 3 baths. Public sand beach close by. Well mannered pets welcome. Only \$1,200 per week. Call (231) 547-4046 (day) (231) 547-6600 (evening) or email samhunt59@yahoo.com

WATERFRONT COTTAGE - On the east side. Available by the week or weekend. One BR, full kitchen and bath. Enjoy the water and the woods, year round. Off-season rates. Complete privacy. (231) 448-2907.

HOUSE AND CABIN NEAR INDIAN POINT - Enjoy fine country living. A 2-BR, 2-Bath home @ \$650/month and a beautiful studio in a second bldg @ \$450/mo: phone (231) 448-2575.

LOG CABIN ON SAND BAY - pets allowed. 2 BR, 1 bath: \$500. Call (734) 449-0804 or email dlelzey@gmail.com

FOR SALE: 80' OF BEACH FRONTAGE ON FONT LAKE - Lot cleared for building: Lot 7 on Pine Chip Road, turn just past the Sub sign on the Donegal Bay Road. Marge Armstrong, (231) 448-2143 or (941) 729-2637 (cell).

WATERFRONT HOME FOR SALE 3 BR, 1 1/4 bath, at Sand Bay. Sandy beach, 2 lots: 1 w/ recently remodeled home and garage, 1 w/ large pole barn. Just appraised at \$285k. Call (231) 448-2034.

TWO LOTS IN THE PORT ST. JAMES - NEAR FONT LAKE. Perked, wooded, buildable. #708 & 709; electric and phone right there. \$14,000 each. Call Peggy at (269) 671-5557.

SECLUDED 1940s LOG CABIN - just one block from lake and market on one acre - Sleeps 4-6, pets welcome (\$100 deposit.) Washer, Dryer & linens furnished. Bicycles, canoe, grill available \$700/wk; weekends available. (219) 863-2655 or email cehlah@urhere.net

THE FISHERMAN'S HOUSE - Great 'In-Town' location across the street from St. James Harbor. Four bedrooms, three with double beds and one with twin beds, two bathrooms, bed



GREAT LOCATION IN TOWN

and perfect view of the Harbor overlooking Veteran's park. Sleeps 8 - 10 with 2 full baths. Full kitchen, washer/dryer, many amenities. \$900 a week. Call for more info or pictures.
(231) 448-3038

sagged but the truck and sleighs made it across. With a long sigh of relief, Archie and Emmett ran across the thin ice bridge and clamored aboard, and they were off again. A plane buzzed them again, filling them with good cheer.

The going was fine again, and soon they were off Sand Bay. A short way from St. James, another crack was encountered and they used the same procedure to cross. Only this time the

last set of runners on the end sleigh broke through the surface and were torn off when they hit the solid cake on the far side. The sleigh was unhitched, and the group continued into St. James, where they saw the plane sitting on the harbor ice. After unloading the good sleigh, they returned to the broken one, transferred the load, and towed it in.

The school could now be built, and

was completed in early 1933. It was 37. closed twenty-some years later when the Island's declining economy forced families to move away.

Although now it has been remodeled into a summer home at the south end of King's Highway, first by Ruth Colby (Perry Gatliff's rival for best fisherman on the harbor docks), and then again, it is still referred to as the Roosevelt School.

DEEP WATER HARBOR FRONTAGE FOR SALE - 66.5' Harbor Frontage; Deep Water; Space for four 45'+ Boat Slips; Main Street Frontage; 1570 Sq. Ft. Building with Commercial/Residential Use; City Sewer; Option to Purchase Adjacent Parcels; \$399,000. For Further Information Please Contact Jon Bonadeo at (231) 448-2489 or (231) 459-6861.

PORT ST. JAMES LOTS 607 AND 608 - A block from the Font Lake boat launch. (231) 675-2514.

LOTS 644 AND 645 PORT OF ST. JAMES - Nice corner lots. \$19,000 for both. (231) 448-3088.

linens and bath towels provided, fully equipped modern kitchen, washer/dryer, TV, enclosed porch, and open deck with grill. For availability, call Bill or Tammy (231) 448-2499 or (231) 448-2733 or tammymcd107@yahoo.com.

A GREAT HARBOR VIEW - from a great "in-town" trailer. Perfect for a couple of working people. 2 bedroom, 1 bath. Furnished and fully equipped kitchen. \$1500 a month. Please call (231) 448-2235.



A BLOCK FROM TOWN, A BLOCK FROM THE BEACH: 3 BRs, 1 bath; wireless; \$625/week; call (231) 313-6225 or email abbieswest@yahoo.com www.abbieswestcottage.com



40 ACRES ON SLOPTOWN ROAD - Call Bud at (231) 448-2397.

FOR SALE, 11 ACRES ON EAST SIDE DRIVE - good land, 357' on road, 1373' deep; \$28,900. Phone (231) 448-2545.

20 ACRES WEST SIDE ROAD - \$55,000; 16x18 rustic cabin. Apple orchard and deer blinds; (248) 766-4205.

10 ACRES OLD FOX LAKE ROAD Beautiful, wooded, great building site; \$39,000. (231) 409-1214.

2 LOTS ON SAND BAY - 3.3 Acres each. 1700' deep. Sandy Beach Frontage 117' each. (810) 629-7680 or (231) 448-2257.

FOR RENT YEAR AROUND - 950 sf 2 Bedroom, 1 Bath, Furnished House, Washer Dryer, elect/propane heat, deck. 1st House north of Medical Center, 37362 King's Highway. \$500.00 month. Looking for long term lease. (303) 287-2212.

LOCH WOOD SHORES - About four miles from town on the beach of Sand Bay. 3 bedrooms, 2 with double beds, 1 with two twin beds, one and a half bath, w/d, full kitchen, gas grill, large deck that you step off onto the beach, gas fireplace, and a gorgeous view of Lake Michigan. Call (231) 448-2733 or 448-2499.

DONEGAL BAY - 3 BR 2 bath Home; sleeps 6; many amenities. \$980 a week. Reduced rates for off-season. Visit Lovely's Bay House at www.rentalbug.com/vacation-rentals/michigan/1244 (313) 885-7393, after 4:00 p.m.

DONEGAL BAY COTTAGE - Nicely furnished 3 BR, 1 bath, washer/dryer. On dune w/ beach access. \$775/ July & August \$600 off-season weekly. Dana Luscombe (248) 549-2701 eve or dana.luscombe@gmail.com

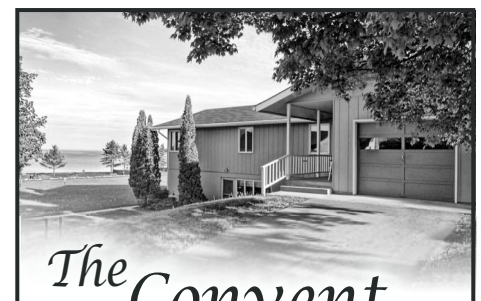
SAND BAY - sleeps 8—amenities—available May- September \$950.00 wk plus security deposit. (231) 582-5057 or email robin@robinleeberry.com

Beaver Island Rental Cottages continued on page 38.

COMBS COTTAGE ON SAND BAY:

Charming beachfront cabin nestled in the woods 50 yards from the water, 4 bedrooms, 2 baths, full kitchen, washer/ dryer, queen beds in 3 rooms with two sets of xl-bunks in the 4th. Satellite TV. Perfect for families. \$900.

Security deposit. Available June-Sept. Website: www.combscottage.webs.com email: combscottage@ymail.com; or call Nancy at (719) 599-3147



The Convent in the Village Beautiful Harbor View

*Sleeps 15 - 7 Bedrooms w/ sinks
Fully-equipped Kitchen
Beach Access*

*Great for Multi-Family Groups,
Family Reunions, Business Retreats
Open Year Round. Weekly Rental,
Saturday-Saturday, in season
3-night minimum off-season*

Call 448-2206
(Pam O'Brien)



HARBOR LIGHTS: Unique log home looking out over Paradise Bay. Beautiful views of St. James Harbor, Garden, and Hog Islands. Enjoy the boats from the huge deck, or sit around the fire pit on the beach. Very secluded, sitting among lush cedars and pines. 3 bedrooms with 2 queens and 2 twins. One large bathroom and one half bath. All the amenities you could ever need. Immaculate home with "spectacular" views. \$1,150 a week. Home (630) 834-4181 Cell (630) 995-0507 harborlightsbim@aol.com



WATERFRONT HARBOR HOUSE FOR RENT:

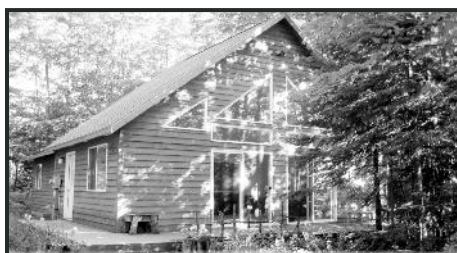
Spectacular view of Paradise Bay! Large home with all the amenities, linens provided. 4 bedroom, 2½ baths, sleeps 8, washer/dryer, fully equipped kitchen, satellite tv. June – Sept. \$1250 a week. Short walk to the Stoney Acre Grill. Please call (231) 448-2235



JUDE'S RENTALS: Pleasantly situated in the heart of it all! Jude's house is nestled among the peaceful nature of Beaver Island in addition to being just walking distance from the harbor, historical museums, shops, restaurants and the beach. Call Jude Martin (231) 448-2673 or (616) 726-2432



SECLUDED BEAUTIFUL CHALET FOR RENT: 10 Acres of pine with 360' of sandy Lake Michigan Beach. 2-BR (including loft), one bath, Great Room with 2 sofa sleepers. Fabulous views of the Lake. Large decks. Sleeps 7. Across from state land and hiking trails. Satellite TV. No smoking. Dogs allowed. \$700 per week. Call Ed Eicher (810) 629-7680



BEAUTIFUL WOODED LOT ON DONEGAL BAY: conv to beaches, hardwood floors, & cathedral ceilings. This chalet-style cottage is new, bright and airy with a large front room and cathedral ceiling, lots of windows, and double sliding glass doors. Convenient access to the best beach on the island. Only \$725/week. Off-season \$475. Call (517) 927-2374 nprawat@yahoo.com

SAND BAY - "BAY HAVEN" COTTAGE - WEEKLY RENTAL - Lake Front, Sandy Beach, 5 br, great view, laundry. East Side Dr. - only 4 miles from town. Awesome sunrises—walk to beach is straight and flat out the lower level. No pets and no smoking. Please call Laurie Bos at (616) 786-3863



ALLEN HARBOR-LAKE FRONT:

One block W. of marina. Sharp 3 bedroom, 3 bath, washer/dryer. Sleeps 8. Awesome view of harbor from living room, kitchen/dining room, and master bedroom. \$1,500/week. Call Patti Fogg (616) 399-5067 pfogg@charter.net or www.allenfoggcottages.com



SHORTY'S PLACE:

In town with a beautiful view of the harbor and our beach lot across the street. 3 bedroom, 2 bath, sleeps 6. Dalwhinnie and McDonough's within walking distance. \$1,200 per week. Call Patti Fogg: (616) 399-5067 pfogg@charter.net Website: www.allenfoggcottages.com



or email lauriesbos@chartermi.net Photographs of Bay Haven can be seen at: www.bayhaven.beaverisland.net **WEEKLY RENTAL - Lakefront.** "The Last Resort" 2 BR house on Sand Bay, great view, beautiful sunrise, laundry pair, 1 ½ bath. Phone Bill McDonough at (231) 448-2733 (days).

Beacon Subscription: ☐ New ☐ Renewal ☐ Gift

Name _____

Address _____

City _____ State _____ Zip _____



☐ \$30.00 / Year (Standard Rate Mail)

☐ \$45.00 / Year (First Class Mail)

If you would like a gift card sent:

A Gift From _____

Message _____

Please Mail to: The Beaver Beacon . Box 254, Beaver Island, MI 49782



LAKEFRONT:

2 bedrooms, 2 baths + large lower level with sleeping for 6. Sleeps 12 total. Washer/dryer, bikes, kayaks, wrap-around porch, views of sunset & Garden & Squaw Islands. \$1400/week. (773) 663-7772. Website: www.LinnsLakeLodge.com



FOR RENT MAIN ST. 3300 SQ. FT: 5 Bedrooms. 3 Baths. In-Town. 1/2 block from ferry - Across from yacht dock. 1 block from public beach. Responsible parties only. Reasonable. Call for info, Kathleen Wood, (231) 448-2311 Home (231) 598-1119 Cell.



ISLAND AERIE: Overlooking harbor next to Nature Preserve, easy walk/bike to town, 3 bath, 4 BR; sleeps 12 w/ 2 king and 10 twin beds, large 1st floor decks, 2nd floor wet bar and deck, 3rd floor game room, all modern amenities and appliances, great for multiple families and groups. \$1800/wk, reduced off-season and extended-stay rates. Call John and Jan (989) 560-8639 www.islandaerie.net . Jan@islandaerie.net



NORTH SHORE 300' BEACH FRONT: Newly remodeled Sunset Cabin overlooking Garden Island. Charming cabin with 3 season porch has Queen, Full/Twin bunk-bed and sleeper sofa. Located on Pine Street, easy walk to town. \$1,000. a week June through September. No pets please. Call (231) 448-2050 for more info.



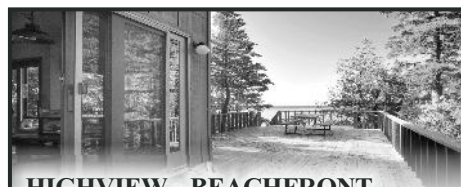
DONEGAL BAY COTTAGE: 3 BR, 2 BA, full kitchen, W/D, fireplace, secluded patio & deck surrounded by pines and bluff and overlooking one of Beaver Island's best beaches. \$850 per week June-September; winter rates available. Call (734) 996-3973 or loonlookout@comcast.net home.comcast.net/~loonlookout/site/

A HOUSE RENTAL - Cute 2 bdrm house in woods near town, public beaches, and bike path. Screened porch. Washer, dryer. No pets, no smoking. \$595/week. Call (231) 871-0477.

7 PINES - Weekly Rental. Close to town (short walk to Dalwhinnie) Sleeps 6, 1 1/2 bath, washer/dryer,

linens not furnished, freshly remodeled, *DOG friendly*, \$850/week, Contact Gretchen Fogg at (616) 318-1424 or gabf24@gmail.com

FOR RENT - FLORIDA 2 BED-ROOM LOWER LEVEL CONDO with patio. Maria Manor, Port Charlotte Florida. Call Dale Cull (989) 737-2994



HIGHVIEW - BEACHFRONT HOUSE FOR RENT: Exciting cottage with view of High Island from large deck. Open floor plan, huge windows on extremely private beach. 2 BRs with 2 full beds + loft with 2 twins. 1 1/2 baths, TV/VCR, W/D, microwave, gas grill, all amenities. \$1200/week; spring & fall \$895. Limit 6 people. Now with wireless! Call (941) 921-2233 or (317) 769-6563 Photos at highview.beaverisland.net



BIRCH HOUSE ON FONT LAKE: Close to town and Donegal Bay, 3 bedrooms, 1 bath, fully furnished home. \$900.00/week. (630) 750-7870 lhmrinc@aol.com

Life in the Beaver Island Archipelago

The new 208-page full color hardcover Beaver Island Book



Name _____

Address _____

City _____ State _____ Zip _____

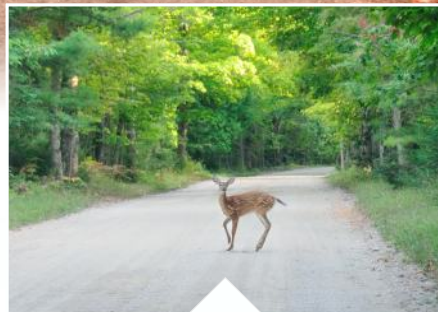
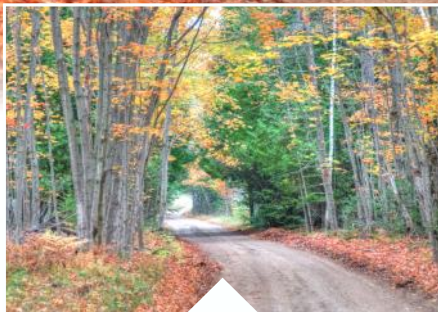
_____ Number of books \$35.00 per hardcover book, including shipping

If you would like a gift card sent:

A Gift From _____

Message _____

Please Mail to: Paradise Bay Press . Box 52, Beaver Island, MI 49782



B E A V E R I S L A N D
N O V E M B E R 2 0 1 2



P.O. Box 254
Beaver Island, MI 49782

www.beaverbeacon.com

ADDRESS SERVICE REQUESTED

STANDARD RATE
US POSTAGE PAID
BEAVER ISLAND, MI
49782
PERMIT NO. 3