

September 2012 \$2.75

Beaver Beacon

The Island Monthly Since 1955



THE CIRCLE AND THE SPIRE



Dalwhinnie

The meeting place

Full breakfast, fresh baked breads, donuts, pastries, cakes, lunch with such specialty sandwiches as our famous portobelo mushroom sandwich, fresh ground beef burgers, pizza, cappuccino, fresh salads, and gourmet kitchen items and cookbooks! A great place to meet friends! (231) 448-2736.



McDonough's Market, Inc.

Since 1933
On America's "Emerald Isle"

38240 Michigan Avenue
Beaver Island, MI 49782
(231) 448-2733

Full line of groceries. Custom-cut meat.
Fresh produce, Beer, Wine, Liquor.
A large selection of specialty foods. Block & cube ice.
Post cards. Beaver Island clothing and gifts.
Small & major appliances.
Notary service, Fax, Money orders. Michigan lottery.
Greeting cards, Island maps, Beaver Island books.
www.mcdonoughsmarket.com



CARY CONCRETE LTD

GREG CARY - OWNER LICENSED BUILDER

- | | | |
|--|--------------------|---------------------------------------|
| • Automated Batch Plant | • Driveways | • Basements |
| • Redi-Mix & Insulated Foam Poured Walls | • Sidewalks | • Fireplaces |
| | • Concrete Pouring | • Unlimited Masonry & Cement Supplies |
| | • Garages | |

CALL NOW
FOR A FREE ESTIMATE
231.448.2242

CARY CONCRETE LTD . 36520 KINGS HWY . BEAVER ISLAND, MI . 49782

SCHWARTZFISHER

STONeworks

Quality Work Done on Time

EXCAVATION

- Site Clearing
- Driveways
- Basements
- Septic Systems
- Pump Back Systems
- Poured Concrete Walls

MASONRY

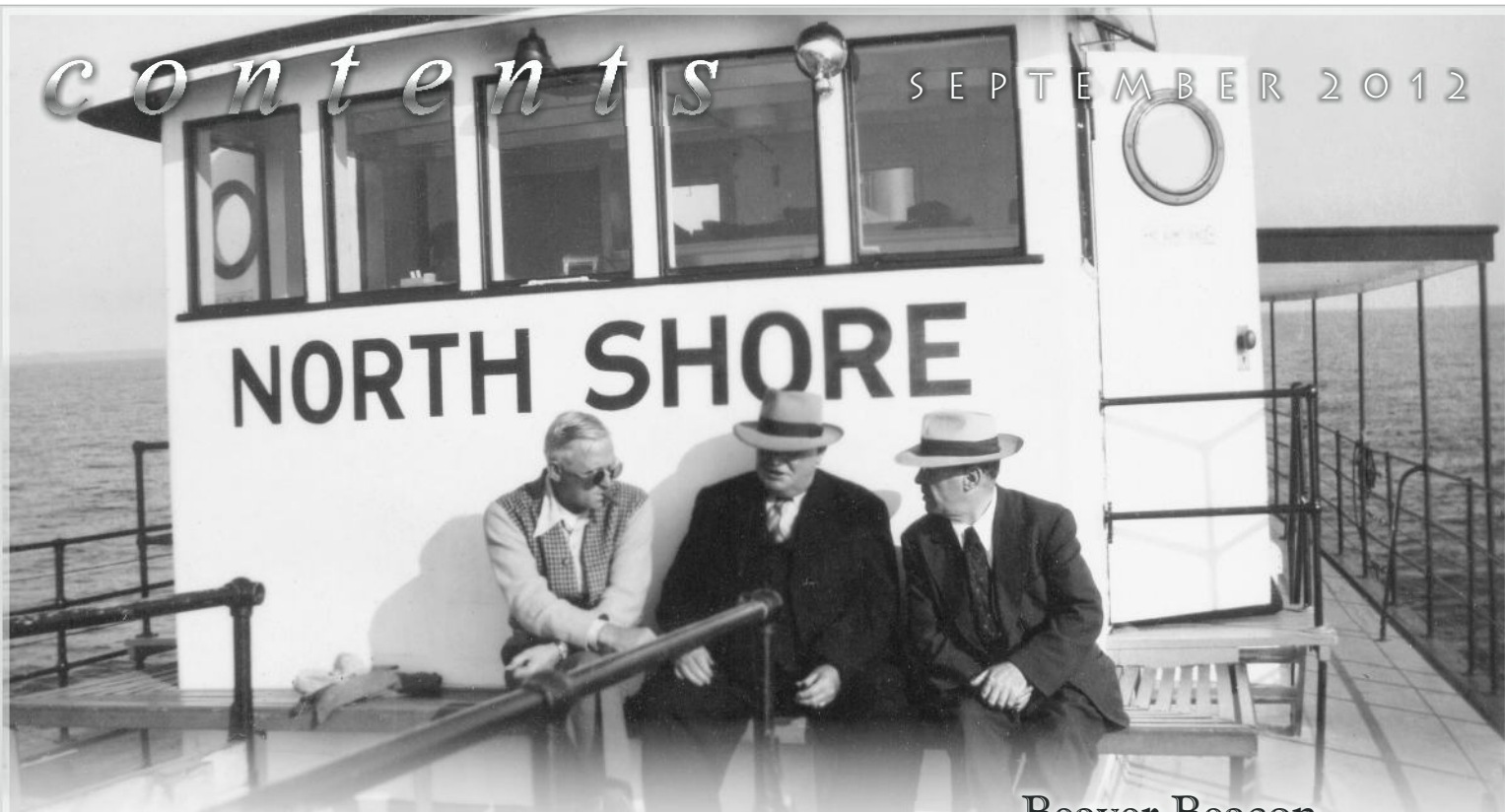
- Block Work
- Flat Work
- Site Prep
- Tree Clearing
- Rock Retaining Walls
- Chimneys
- Stone Work

WELDING

- Mig
- Tig
- Aluminum
- Stainless Steel
- Plasma Cutter
- Steel Fabrication

DAVID SCHWARTZFISHER, OWNER
27540 BARNEY'S LAKE ROAD, BEAVER ISLAND MI 49782

(231) 448-2706



News from the Townships	4.
Hey, everybody, Let's Paint!	9.
A Royale Showing	10.
The Bridge to Everywhere – starts Here	12.
One Hundred Years Ago	13.
A Splendid Dedication (all our champagne is imported)	20.
A congregation of different drummers	22.
An Expedition to mysterious Garden Island	22.
On This Date	29.
Big Red to Fly Again!	33.
A Homecoming for Old Cars	34.
"Howdy!" – Bigger than Life	37.
<i>Destination Paradise Bay: Delivering a Land Yacht</i>	39.
A letter from the king of the Iron Men	40.
Have an interesting Island story?	

We want to hear from you!

Beaver Beacon

the Island Monthly since 1955

published by

Paradise Bay Press

Beaver Beacon

Box 254. Beaver Island, MI 49782

(231) 448-2476

www.beaverbeacon.com

editors/owners

Jeff Cashman

jcashman@beaverisland.net

William Cashman

wcashman@beaverisland.net

contributors

Joyce Bartels

Larry Kubic

Dawn George

Krys Lyle

Brad Grassmick

Tina Morgan

Larry Hansz

Lance Olson

Chuck Hayden

Antje Price

Leonor Jacobson

Jeffrey Stein

Jim Jones

Keith & Rachel Teague

William Kohls

Brenda Welter



The Beacon welcomes Island Stories, Articles, Photos, and Letters to the Editor. Thanks to all who call & email with news!

4. NEWS FROM THE TOWNSHIPS

St. James Township

The supervisor announced that the closing of the trade of Whiskey Island for the DNR property in the harbor would be complete in a few days. The effect would be that St. James bought a lot 100' wide and around 1,000' deep running from the water's edge across the road and into the woods, including the Deputy's home, for a little over \$13,000. A resolution was passed allowing him to sign the deed.

After striking out a clause in which the cost of insurance was passed through to the townships, the EMS/Island Air agreement developed by both township attorneys, working together, was sent to Island Air for its approval. One more adjustment might be made, though: the Peaine attorney had not yet heard back from a consultation with a health care specialist in his Grand Rapids branch office. Yet a resolution was passed authorizing Danielle Dedloff, the EMS manager, to sign the agreement.

The CCE Dispatch Authority presented a lease proposal for the Donegal Bay Tower, which was similar to the one it presented to Peaine for the East Side Fire Hall tower. The St. James attorney wanted to extend the liability protection to cover the back-up generator recently installed (the originally-planned fuel [fuel oil] was changed to

propane). The new equipment had been hung on the tower, and a few initial glitches were overcome.

The Board declared that members of the public should not phone the township attorney directly but should ask their questions to any member of the Board.

Lil Gregg was reappointed to the Library Board, extending her service beyond 23 years.

The supervisor was authorized to submit an application to the Great Lakes Fishery Trust for a grant to pay 70% of an engineering study for a fishing pier. (The boat launch is beyond the scope of their interest.) The Township would have to pay 30% of the \$22,700 estimated cost (this corresponds to funding contained in the accepted Recreation Plan). If the grant is denied, application to the Coastal Zone Management Agency will be made in the spring.

A derogatory letter about the Municipal Marina manager was acknowledged.

Someone staying at the campground complained about a noisy late-night party. The outhouse there needed pumping and revitalization.

Peaine Township

As of 8-6, the EMS was licensed as an air ambulance, with no limit to where




*Your Port of Call on
America's Emerald Isle*

**Deluxe Motel Units
and Two bedroom Condominiums
with Full Kitchens.
Located next to the Boat
and Ferry Docks.
Overnight or Weekly
Swimming Pool, TV**

**For Reservations Contact:
Harbor View Motel
P.O. Box 104 Beaver Island, MI 49782
(231) 448-2201
harborview@tds.net**



WWW.HARBORVIEWBEAVERISLAND.COM



- ✓ Licensed and Insured
Island-based Business
- ✓ Quality, Efficient, and
Professional Service
- ✓ Electrical, Voice & Data
- ✓ Residential & Commercial
- ✓ Plus, we're nice!

231-448-2093



- NEW CONSTRUCTION
- REMODEL
- COTTAGE OPENING,
CLOSING, CLEANING, +
MAINTENANCE
- SHOWER & BATHROOM
DESIGN
- FURNACE & BOILER
SERVICE + INSTALLATION
- FAUCET + FIXTURE
REPLACEMENT
- WATER HEATER
REPLACEMENT + SERVICE
- WELL MAINTENANCE
- LICENSED HVAC
INSTALLATION + REPAIR
- LP APPLIANCE + SUPPLY
INSTALLATION
- I CAN FIX ANY LEAKY
FAUCET OR PIPES
- PLUGGED SEPTIC LINES
- WATER SOFTENER
INSTALLATION + SERVICE
- DISCOUNTED SERVICE
RATES FOR YEAR ROUND
RESIDENTS

Call 231-675-8692

it could take a patient—so long as its flights in a given year did not exceed 45.

The latest revision of a contract between the EMS and Island Air (doing business as McPhillips Flying Service) had been sent to Island Air, which was reviewing it with its attorney, and it was also sent to the St. James attorney.

The inclusion of a 50/50 division of revenues, as opposed to a fixed fee (by implication it would be paid to IA, with the EMS taking whatever was left; but this was not stated), raised the question of whether or not an oversight agency would consider this a possible opportunity for a kick-back scheme (the origin of this possibility was unclear). The supervisor thought a 50/50 arrangement was "low risk," but members in the audience wanted a "no risk" agreement instead. They urged the reading into the minutes of the Peaine attorney's response to this question. The attorney suggested IA determine a fixed fee based on distance, suggesting that such an arrangement would generate less criticism. The consultant, Mike Slattery, had not offered an opinion on the best division of revenues. The supervisor pointed out that under a 50/50 split, neither the EMS nor the Township would be responsible if the transport charge went unpaid, but the audience was not satisfied that the best arrange-

ment was being proposed.

The 9-1-1 network involving the towers on the King's Highway, East Side Drive, and the South End was said to now be in service. No money is involved in the new lease, but the improved service will be a great boon to the Island. The supervisor said opportunities like this are why the two towers were given to the Townships.

On the cell phone front, the Verizon offer to lease space on the King's Highway tower site, where they would replace one of the existing towers with one designed to carry a larger load to provide 4G service, was accepted. The lease at present is just over \$2,000/year; it will go up by \$1,200, and after 5 years go up by 10% for the next 5 years, and then increase annually by two to three percent. This activity has resulted in an offer by AT & T to increase its use of its King's Highway tower (one of three there), and raise and extend (by 20 years) its lease. It would pay a one-time fee of \$7,500 to do this.

The Township unanimously voted to extend Sandy Birdsall as its representative on NRESC.

A special meeting about the Air Ambulance contract

A special meeting was held at the Peaine Hall to consider

continued on page 6.



Oak Woods LODGE

formerly Laurain Lodge

- ◆ Fine accommodations known for hospitality, quality, comfort and convenience for business or pleasure.
- ◆ Fully furnished housekeeping units with TV
1 or 2-Bedrooms; king, queen, twin beds available
- ◆ Grand deck, grills, separate children's play area, campfire.
- ◆ 12-Ft. aluminum rowboats on inland lakes for fishing, sightseeing (included with each room)
- ◆ Fresh, spacious rooms, pleasant gardens, wooded views.

Relax. Let the hospitality at Laurain Lodge help you enjoy Beaver Island. It's why so many return year after year.

Visit our website to see pictures: www.OakWoodsLodge.com

Call today for reservations or information on island activities

Phone (231) 448-2099

38085 Beaver Lodge Drive, Beaver Island, MI 49782
Your Hosts, Larry & Theresa Laurain

Beautiful setting

Within a short walk to:

Shopping
Dining
Public beach
Playground
Hiking
Museums
Tennis courts
Library

Daily morning
coffee & donuts

Paradise Bay Coffee Shop

Across from the Township Airport



Featuring coffee, espresso, specialty drinks, Breakfast & Lunch

Farmers Market
Thursdays 9 to 11

Pizza

Friday and Saturday evenings.

Open Every Day

Dale & Terry Keyes,
Proprietors

Dale_Terry_Keyes@msn.com



6. *News from the Townships*, from page 5. and act on two matters: to authorize the incorporation of information requested by Island Airways in the proposed agreement, and reaffirm that the 50/50 division of fees would be in the best interest of the Township. There was palpable resentment that St. James' Board had not been invited, and these expectations were not met.

The meeting began with a recounting of the sequence of events by Angel and Paul Welke from the lowering of the

insurance rate on July 3, their proposal of July 12 (including a 50/50 split) which was accepted but not signed, their \$6,000 down payment, the delivery of a contract on August 8 which contained several typos, their rejection of unexpected clauses, and then another contract with a hybrid formula for dividing the revenues generated by air evacuation. They were frustrated by their ideas being accepted in verbal discussions but then being modified in the generated text. Still, they said that if the last page of the

current proposal was fixed, they could move forward.

The supervisor recounted the same events, but set them in a broader context in which the township attorney had raised a question about a possible conflict. But the latest opinion, received that morning, indicated that a fixed fee revenue splitting would have different and equal (low) risk factors. The attorney had recommended the hybrid proposal (which was not revealed to the audience), but the supervisor thought there was no reason not to revert to the 50/50 revenue sharing. He wanted to reaffirm that this had already been approved and could now be signed, but the Board thought the matter was at a crucial juncture and did not want to proceed without St. James being present and in agreement. So the meeting was adjourned, and a joint meeting set for August 24.

A special joint Township meeting

After a meeting with the principals reached an agreement about the division of revenues on August 23, a brief joint meeting of the Township Boards



St. James Marine Co.





Serving Beaver Island and the Great Lakes for your hauling and freight needs. Delivery to your location available.

St. James Marine Co. hauls:

• general freight and cargo	• container shipping (small, medium, large)	• automobiles
• heavy equipment	• boats	• semi-trailers
• stone products	• building materials	• junk cars
• cement products	• modular homes	• garbage dumpsters
• topsoil	• trailers	• and much more!

In addition, St. James Marine Co. executes on-water fireworks shows, barge hauling-services for logging, commercial assistance towing, dust control, salvage search and diving, working boat repair, dredging, marine improvement and dock repair.



You call, WE HAUL!

Phone: (231) 448-4000 Cell: (231) 838-0254

www.stjamesmarine.com



A MATTER OF DEGREES

In August 2002, Jacque LaFreniere began taking weather observations for the National Weather Service (NWS) Cooperative Weather program (COOP). The COOP program was initially created in 1890 under the Organic Act, to define the climate of the United States and help measure long-term climate changes. Currently there are around 10,000 volunteers taking observations across the country.

Every day for the past 10 years, Jacque has observed and recorded a daily weather observation from her home on Beaver Island. A Cooperative

approved a hybrid arrangement:

a) BIEMS shall bill for air evacuations, collect the fees, and pay Island Air the *lesser* of these amounts:

(1) \$1,800 per flight plus \$30/mile for transport with a patient. (The mileage translates to \$810 for Charlevoix at 27 miles, \$930 for Harbor Springs at 31 miles, and \$1,770 for Traverse City at 59 miles, so the three rates would be \$2,610, \$2,730, and \$3,570.)

(2) If the bill is not paid in full, half of whatever amount is collected.

(3) If nothing is collected by BIEMS, nothing shall be paid for the air evacuation.

b) The EMS must make whatever payment is due within 30 days of it receiving payment.

c) The arrangement shall be reviewed in six months, and may be renegotiated then by either party upon demonstrating that conditions have reduced its feasibility.

The St. James supervisor said the Township's attorney had approved. The Peaine Township supervisor said he would immediately send it to the Peaine

attorney for his approval, which he believed would be quickly forthcoming.

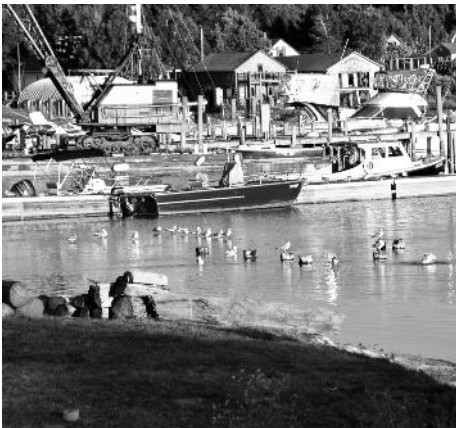
So in 11 minutes the difficult part was accomplished. Now all the parties will quickly review the other parts of the agreement, which they implied would be rapidly done.

Election results

In Peaine Township, on the Republican ballot Pete LoDico (72) and Mike Scripps (47) finished ahead of Charles Carey (38). In St. James, Bill

Haggard outpolled Rick Speck, 83 to 79, in the race for supervisor. On the Democrat ballot, Brad Grassmick (65) and Ernie Martin (40) finished ahead of Carolyn Works (31). In Peaine the Airport Proposal passed, 104 to 88, and the Roads Proposal also passed, 125 to 64. In St. James the EMS Proposal passed, 120 to 37, and the Historical Society Proposal also passed, 102 to 55.

In the race for county commissioner, District 5, Richard Gillespie received 627 votes to Dennis Jason's 362.



Weather Observer consists of (once daily) recording the Maximum and Minimum Temperatures, Snowfall and Snow Depth, and Precipitation which occurred during the past 24 hrs.

The data Jacques collects plays a critical role in evaluating changes in the climate of Beaver Island and Northern Lake Michigan. Other Island residents have taken weather readings in the past, such as Betty Welke ("Weather by Welke"), St. James Clerk Vivian Visscher (who got us on the TV weather maps, which previously had not even shown Beaver Island), Father Zugelder, and Feodor Protar.



Experience the Difference!

Surround Yourself With Service, Style, and a Smile.

Daily flights to Beaver Island in modern, well-appointed aircraft piloted by experienced aviation professionals.



Stunning Lighthouse & Fall Color Air Tours.

See the beauty of the Beaver Island archipelago as you have never seen it before.
(1/2 hr and hourly tours available)

Aerial Photography - Homes, property, & businesses

Great Feature! - Car Valet Service to or from Boat Dock

For the latest news and specials please check out our website and on Facebook.



Fly Right!



**Phone: 231-237-9482 or 888-359-7448
Beaver Island Local: 231-448-2089
WWW.FRESHAIRAVIATION.NET**



06918 Old Norwood Rd.
Charlevoix, MI 49720

Located next to the Ford Dealership off US 31.
Just a half mile south of the airport entrance



BONADEO ENTERPRISES, INC.

Proudly serving customers on Beaver Island for 30 Years.

- Home Construction • Driveways & Excavation • Concrete & Redi-Mix
- Fireplaces & Stonework • Septic Systems
- Natural Stone & Plant Landscaping

Dealer and Factory-Trained Installer for the Super-Insulated
REWARD WALL SYSTEM

Please call for an onsite meeting, plan review and estimate.

JON BONADEO
LICENSED BUILDER

Lakefront, Commercial & Inland Properties For Sale

• Cell: 231-459-6861 • Email: jbonadeo@tds.net
www.beaverisland.org/bonadeo-enterprises

Time for a Change? Time for Sotheby's.

Representing homes of varied lifestyles, distinct settings and diverse locals.



COMING SOON...

Stay tuned for a selection of AMAZING properties on Beaver Island that will be announced in the next issue of Beaver Beacon. I am proud to represent this beautiful area and would enjoy the opportunity to assist you in buying or selling your home.

Harbor

Sotheby's

INTERNATIONAL REALTY



Connie Lenau

Sales Associate

231.499.1224

connie@harborsir.com

Bay Harbor | Harbor Springs | Walloon Village
harborsir.com



*The Restaurant
at Beaver Island Lodge*

Where the Cuisine is as Wonderful as the View



231-448-2396

www.beaverislandlodge.com



St. James Marine Co.



**is Now Collecting
Scrap Metal
to Recycle**

FREE



Clean up your property

Bring scrap metal to our dock

(Look for the scrap pile on the north side of the dock)

No Freon (Refrigeration)

If you have any questions or need information, please contact

St. James Marine Co.

Phone: (231) 448-4000 Cell: (231) 838-0254

www.stjamesmarine.com



Leonor Jacobson



Leonor Jacobson



Bonnie Rollenhagen



LET'S PAINT

9.

Several Island women took advantage of an opportunity to improve their painting technique by signing up for one or several intense sessions of instruction from master artist Sharon Long, who drove up from Destin, Florida, for the occasion. Leonor Jacobson has been taking classes in the winter from Sharon, and organized the four-day event at the Peaine Hall.

Everyone immediately got down to business, with Sharon bustling around to oversee three tables. Besides Leonor,

Pam Gerecke, Jan Paul and her daughter Melanie and Melanie's friend Mary, Judy Jones, Judy Boyle, Lois Williams, Alana Anderson, Sandy Howell, and a woman from Traverse City who knew Sharon in Destin, Bonnie Rollenhagen.

From time to time a special topic was announced, such as knife work or color densening. The rest of the time was spent on individual lessons from Sharon.

Sharon worked with oils much of her life, but allergies forced her to switch to water colors. She became an excellent

water-colorist, and several of her own works were on display. No detail is too fine to escape her attention—she averages 60 hours on a painting. She and the other artists gathered at the Hall worked from photographs of birds, flowers, animals, or landscapes.

The lessons were not inexpensive—Sharon had come a long way. But a plan is in the works to lower the cost for next year. All the artists hoped she would come back; in Art, as in everything else, there is always more to learn.

MW ART SHOW: LARGER, MORE INTERESTING



Shan Renton Hale



Shan Renton Hale



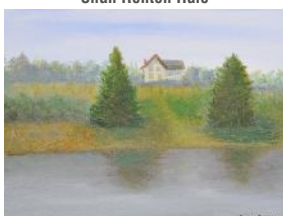
Nancy Peterson



Linda McDonough



Kay Masini



Betsy Borre



Antje Price



Judy Jones



Nancy Peterson



Kay Masini

WENDY S. WHITE, D.D.S. BEAVER ISLAND FAMILY DENTISTRY



P.O. Box 218
37304 King's Highway
Beaver Island, MI 49782
(231) 448-2100
Hours By Appointment

Don't go through another winter without storage!

Pole Barn and Garage packages for
your cars, boats, tractors, etc.

Lots of sizes to work with: 24 x 32,
24 x 40, 32 x 40, 32 x 48, 40 x 60
and larger.

Call for a quote today!



McDonough Construction, Inc.
Contact Kevin B. McDonough
Home: 231.448.3038 Cell: 231.675.5444
www.mcdonoughconstructioninc.com

R. Gillespie Enterprises

P.O. BOX 217 • BEAVER ISLAND MI 49782

231-448-2577



Excavating * Road Building
Contracting * Licensed Builder

WWW.GILLESPIEENTERPRISES.COM

Live harbor webcam at www.BeaVerIslandRealty.com



CONNAGHAN CONSTRUCTION

COMPLETE BUILDING AND REMODEL
ADDITIONS, GARAGES, DECKS, PATIOS, PORCHES
KITCHENS AND BATHS, FLOORS AND MORE
FREE ESTIMATES. TONYCONNAGHAN@GMAIL.COM

231 448 2454

CELL 616 843 5381

10. SHIMMER OF THE ROYALE WATERCOLOR SOCIETY

After decades of inspiring both attendees and local artists, CMU terminated its summer water-color class on Beaver Island three years ago. Yet the students, mostly teachers, could not stay away. Last year ten of the members of the Royale Watercolor Society came up for an intense painting session in early August. They hoped to attract others, but this year the number dropped to six.

A show was held in the Community Center at the end of their Brothers' Place stay, and the work of Arlene Cleveland, Kate McDonald, Sara Mullen, and Pat Tinney was well received. The power of the Island to

inspire was once again on display.

In addition to seeing the scenes we know and love, we were treated to a new art form, *encaustic*, which is really 2000 years old but only now making a belated Island appearance in Sara Mullens' hands. This involves painting with layers of beeswax, with different colors kept simmering. Between layers the work is heated with a torch to soften borders. The effects were stunning.

Hopefully the dedication the Royales have shown will lead to a new source of energy organizing an Artists' Retreat of state-wide or even national appeal. It would be a shame to lose what this group brings to the Island.

BEAVER ISLAND'S NATURAL RESOURCES AWARDS

Noted as one of the Great Lakes jewels, the Beaver Island archipelago has been awarded nearly \$400,000 in 2012 for multi-faceted biological inventories and restoration work. The funding was secured through grants from the Charlevoix County Community Foundation, the Michigan DNR's "Private Land Incentive Program," and the National Fish and Wildlife Foundation's "Sustain Our Great Lakes Program."

Unique partnerships with state, tribal, land conservancies, and non-

profit organizations have set a model for collaboration, restoration, and protection of some of the finest natural areas in the State. Designated as an important Birding Area, Beaver Island provides significant habitat for waterbirds and migratory songbirds, as well as for threatened and endangered plants and near-shore fish populations. Beaver is considered an important target for biodiversity conservation. For further information, contact Peter Igoe, The Beaver Island Association

—Beaver Island Association
beaverislandassociation@gmail.com

HEALTH FAIR

An important event will be held on Friday, September 28th, from 1 p.m. to 6 p.m. at the Beaver Island Community School: the Health Fare!

There will be many on-Island and off-Island organizations present (such as the Beaver Island EMS and the Food Pantry, as well as the Charlevoix County Community Foundation and the Women's Resource Center). This gathering of organizations is all about offering you information that can benefit you financially, emotionally, and physically. Also, Charlevoix Area Hospital will provide some on-the-spot services, like free cholesterol screening that requires no fasting and gives you results in 10 minutes!

Some of your Beaver Island neighbors will be there to give talks as well. To name just a few: Andy Kohls will provide good insights into care for pets—such close companions for many people! And Brad Grassmick will talk about heart health, dissecting an elk heart in the process.

Stop by just after lunch, when you pick your students up from school, or right before dinner. There will be something helpful and interesting there for everyone.

Please send any questions about this upcoming event to Adam Richards at 448.2067 or adamanos@gmail.com.

—Adam Richards



"The Pilot" John-Andy Gallagher

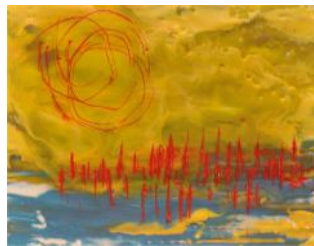
Island Favorite Patricia Tinney



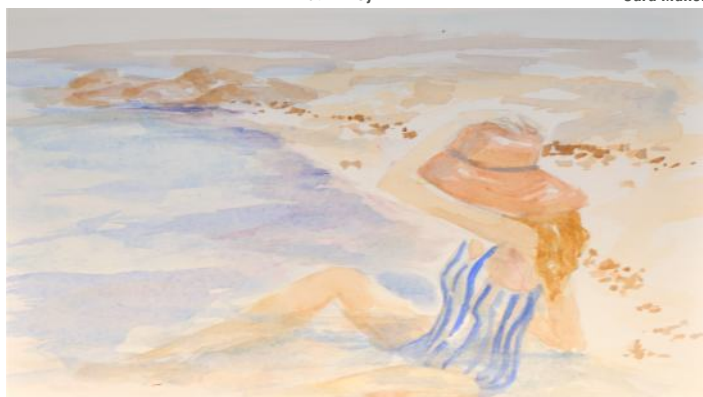
Pat Tinney



Pat Tinney



Sara Mullen



Kathleen McDonald (above)

Sara Mullen (below)



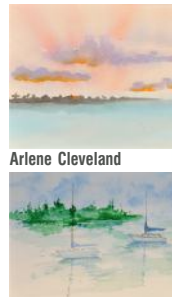
Kathleen McDonald



Sara Mullen



Arlene Cleveland



Arlene Cleveland

Kate McDonald



Pat Tinney



Kate McDonald (above & lower right)

Sara Mullen (below)



Arlene Cleveland





BRIDGING THE MIGHTY IRON ORE

In the past hundred years we've been appraised of an ever-more-complicated sequence of bridge-building projects stretching from the Brooklyn Bridge to Golden Gate and the Mighty Mac. Now that can-do spirit of American enterprise and ingenuity has come to Beaver Island, thanks to

the after-dark work of a mysterious group of budding engineers known only as the "Iron Ore Creek Seven."

Attempts to track them down to give them an award have been foiled by their diligent secretiveness — even their footprints were brushed out. Their work was done without permits, though, and is in danger of being rubbed out by the authorities — even though petitions to preserve it are being rapidly circulated.



ONE HUNDRED YEARS AGO

13.

from Joyce Bartels

Notes from F. Protar's diary with the help of Antje Price

Charlevoix Sentinel Thursday, September 5, 1912 **Local News:** "James McCann, of St. James, came over Friday with a boil on his hand that threatened a bad case of blood poisoning. After heroic treatment he returned home Saturday."

Beaver Island News: "John Floyd and wife, went to Charlevoix on a visit."

"Supervisor H. P. Boyle went to Charlevoix Tuesday on business."

"Miss Malone returned home after a month's visit with her brother, R. Malone. Dan C. Gallagher returned home from Grand Rapids, where he spent several weeks."

"Miss Mary Martin returned home to Milwaukee Tuesday after a month's visit. Miss Alice O'Donnell of Grand Rapids, after spending a month's visit with friends returned home. Miss Mary D. Gallagher is home from Chicago."

"John Stafford and wife, went to Charlevoix Tuesday for a visit."

"Fr. Malone went to Charlevoix Tuesday on business."

"Miss M. Dourgh (sic) is here visiting Father Malone. Mr. and Mrs. J. Hennessy of Chicago is (sic) visiting Mr. and Mrs. Jas. Donlevy"

"Mr. Will O'Malley of Chicago is visiting his sister Mrs. James Donlevy. It is forty years since Mr. O'Malley left the Island."

"Miss Josephine Grasselli (sic) of Cleveland, O., is camping out on her Beaver Island estate."

"Mr. Tom Finnessy and Hunter of Chicago is (sic) visiting the Donlevys."

"Mr. H. Miller and family of Cleveland are visiting with Miss Grasselli." (Note: Sept. 1 – 10, rain, two thunderstorms, 64 – 90 degrees. F. Protar)

Charlevoix Courier Wednesday, September 11, 1912 **No Beaver Island related news**

Charlevoix Sentinel Thursday, September 12, 1912 **Beaver Island News:** "Pat Bonner while overhauling his threshing machine and chipping off some of the machinery suffered a serious injury to his eye by a flying steel chip. He was taken to Petoskey hospital and the eye removed. (Note: Sept. 6 Patrick's eye!! F. Protar)

Supt. Thayer, of the U. S. Fish commission, was here last week arranging for the fall spawn harvest." (Note:

W. W. Thayer appears in the Hotel Beaver register Sept. 10, 1912)

"Mrs. Mads Jensen, Mrs. H. Nelson and Mrs. J. Northcut, of Garden Island spent several days of last week in Charlevoix."

"Misses Winnie Weaver and Mayfred Stacks, of Charlevoix, visited friends here one day last week."

"Mrs. Gus Milkie returned home from a visit to South Haven, Monday."

"Miss J. Grasselli and Mrs. E. J. Miller of Cleveland, are clearing the ground for the erection of a cottage."

"Mrs. J. Denny, of Grand Rapids is building a cottage."

"A. L. Coulter and wife of Charlevoix were here Monday and Tuesday."

"W. J. Burns, of Grand Rapids, came here last week with a party of friends to look over some lands with a prospect of purchase and improvement." (Note: W. J. Burns, Grand Rapids appears in the Hotel Beaver register – no date listed)

"The steamer *Morning Star*, of Benton Harbor, brought 80 'House of David' people to settle on High Island."

"Mrs. J. Pelkie is visiting friends at Charlevoix this week."

"Mrs. A. J. Borland and Mrs. H. Hennesay, of Chicago, who have been visiting Mr. and Mrs. James Donlevy for some weeks, returned home Tuesday."

"Visitors to Charlevoix this week on business – Mrs. Chas. Roddy, Emmet McCann and J. S. Gallagher." (Note: Sept. 11 – 14, Ideal, 58 – 76 degrees. F. Protar)

Charlevoix Courier Wednesday, September 18, 1912 **No Beaver Island related news.**

Charlevoix Sentinel Thursday, September 19, 1912 **Front Page Article: LIFEBOAT RULES**

RECOMMENDATIONS OF INSPECTION SERVICE FOR LESS STRINGENT REGULATION ARE APPROVED

A number of modifications in the rules governing lifeboats on the great lakes, recommended by the steamboat inspection service, were approved lately by B. S. Cable, setting secretary of commerce and labor. The summer season on the great lakes under the rules, was extended from September 15 until

October 15. Boats on the great lakes covering routes not over five miles from shore and in shallow water, will not be required to carry the full passenger capacity of lifeboats.

In the winter season this class of vessels will carry lifeboats with capacity for 20 per cent of the passengers, and in the summer time for only 10 percent. In the summer time all other boats on the great lakes will be required to carry lifeboats and liferafts for 30 per cent of their capacity.

In the winter time boats navigating beyond the fire-mile limit in the great lakes will come under the general regulations requiring them to carry lifeboats with capacity for 100 per cent of their passengers. It was agreed by members of the board that the regulations for salt water navigation are too stringent for the great lakes. Life preservers, the board held, would be sufficient protection, in the main, for passengers on the great lakes."

Beaver Island News: "School opened Monday, Sept. 16th."

"Miss Josephine Grasselli and Mrs. E. C. T. Miller and Conrad M. Richter of Cleveland returned home after a month here." (Note: All these names appear in the Hotel Beaver register in September, 1912 – no specific date listed)

"Mr. and Mrs. F. Gletcroft (sic) of Grand Rapids, Mich., are looking over some fruit lands." (Note: Mr. & Mrs. Flitcroft, Grand Rapids, Mich. appear in the Hotel Beaver register, Sept. 10, 1912)

"Judge James Sullivan of Muskegon is spending a couple of weeks here."

"Olaf Nordrum and Auditor B. W. Dean of the Booth Fisheries was here one day last week looking over their Beaver Island plant."

"J. C. Gallagher went to Charlevoix Monday on business."

"Mrs. Mary Norton went to Milwaukee to spend the winter with her daughters. Mrs. Norton is one of our oldest residents."

"Dr. Barney, of Charlevoix, is here this week doing dental work." (Note: Dr. Barney, Charlevoix, appears in the Hotel Beaver register, Sept. 16, 1912)

"Miss Annie C. Gallagher returned home Monday from

continued on page 14.

ROBERT'S JOHN SERVICE, INC.

Doing Quality Work for over 18 Years

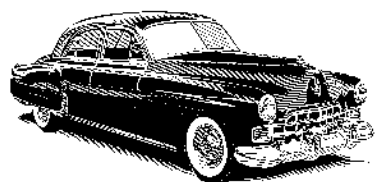


Licensed and Insured

- ✓ Plumbing
- ✓ Heating
 - Radiant In-floor Heat / Hydronic
 - Forced Air
 - Geothermal
- ✓ Water-right / Water Conditioning
- ✓ House Opening / Closing
- ✓ Vac-u-flo / Central Vacuum Systems
- ✓ Great Lakes Hot Tubs dealer — sales and service. Please call for a quote.



ROBERT'S JOHN SERVICE, INC.
(231) 448-2805



Inland Auto

Mobile and Land Based Repair

29 years experience in the business

Friendly Service

Michigan master certified in automotive light and heavy trucks

We repair heavy equipment.

**We Build and Service
Electric Vehicles too!**

Jeff Connor Proprietor

 **231-448-3132**

14. *One Hundred Years Ago, from page 13.*
Grand Rapids where she was visiting for a month."

"Peter Johnson went to Charlevoix Tuesday on business."

"M. J. McCann spent several days in Charlevoix last week on business. Mrs. Tom Hunt went to Charlevoix last week on business. L. J. Malloy, our butcher, went to Charlevoix on business."

"Mrs. Dr. Armstrong and her two children are spending a week visiting Mrs. Mads Jensen on Garden Island."

"Fred Nackerman returned home Saturday after working all summer in the upper peninsula."

"Elizzi (sic) Ricksgers returned home Monday from Charlevoix."

"Susanna and Mary Gallagher, daughters of Dan T. Gallagher, are home on a visit."

"Mrs. Neal D. Gallagher returned home to Milwaukee after visiting her parents. Mrs. Wm. Carnes, of Chicago, returned home Monday after spending the summer on her farm."

"Mrs. Nelly Roddy, of Milwaukee, returned home Monday after spending the summer with her brother."

"Joe A. O'Donnell and Mr. Winnie returned home Tuesday after attending the circuit court."

Charlevoix Courier Wednesday, September 25, 1912 **Local News Briefly Told:** "W. J. Gallagher is attending the Republican state convention in Detroit."

"John Greene of St. James was in the city the first of the week."

"Capt. P. D. Campbell was taken ill the latter part of the week, but is now much improved. Capt. Emory is taking his place on the steamer *Beaver*."

"Representatives of the House of David, of St. Joseph, Michigan, who have recently purchases High Island, were in the city the latter part of the week purchasing supplies for the lumbering operations that they will conduct."

Charlevoix Sentinel Thursday, September, 26, 1912 **Local News:** "The Beaver Island Lumber Co. tug *Ryan* came over last week to be hauled out and recaulked."

"The fine 60-foot gasoline boat *Morning Star*, owned by the 'House of David' of Benton Harbor, was in port several days last week. This sect is commonly known as the 'Flying Rollers.' The are organized on the community plan, somewhat after the Dowie plan. Their belief is chiefly in a literal translation of the bible, and have their own peculiar methods of living. They are establishing a branch on High Island where they own 1200 acres of timberland and a sawmill recently purchased from Heimforth. They expect to have a settlement of 100 people there, one half of whom are there now. The society bought four horses and a large bill of supplies here." (Note: Sept. 26/27 First frost. Sept. 27 - 30 Fair; 29 to 45 degrees. F. Protar)

BEAVER ISLAND CALENDAR

September 8 - **Niehaus' End Of Season Party**, 6:00 pm at Lilly's Pad/Niehaus Hangar at Welke's Airport (follow arrows from King's Hwy past all the hangars and then right along the two track)

September 9 - This year's **Jimmy Buffett Buffett** is going to be Sunday around 5:00 p.m. Bring your good humor, crazy shirts and hats, a snack to pass, and what you want to drink. We will sit back and enjoy each other's company and the sunset

September 15 - **BIA Beach Clean-up.**
Meet at the Community Center at 9; free lunch at noon. Questions: 2981

September 20 - **BIHS meeting**, 7:00

September 28 - **COA End-of-Summer Picnic**, 11:30 - 1

September 28 - **Health & Human Services Fair** 1-6pm at BI Community School (see page 10.)

October 6 - **Bite of Beaver Island** and the **Island Boodle**

November 22 - **Thanksgiving** dinner at GFC, 6 pm.

CANDIDATES' FORUM

Fellow Voters, Please accept a heartfelt "thanks" for placing your trust in me in the August Primary for Peaine Township Treasurer. Please be assured that if elected in the November 6

election I will represent all of Peaine Township and will perform my duties as best as possible. Your continued support would be appreciated.

—Christina M. Morgan



BeaverIslandJewelry.com

*Livingstone Studio
 *www.ETSY.com/shop/Brown
 DogGlassBeads.com on ETSY
 *"Like" Beaver Island Jewelry
 on Facebook
 *Bite of Beaver, Oct. 6
 231-448-2205



McDonough Construction, Inc.

State Licensed and Insured
 Certified in Lead Safety and Weatherization
 25 years of honest experience Quality craftsmanship
 New construction, remodels, additions, garages
 Construction Consulting
 Contact Kevin B. McDonough Home: 231.448.3038 Cell: 231.675.5444
 Coming Soon: www.mcdonoughconstructioninc.com



St. James Marine Co.
New Options
 for Beaver Island freight
 www.stjamesmarine.com



Stock up for the fall and winter!
 non perishables, housewares, lumber, furniture, etc.
 insulated and weatherproof
You lock it! We deliver!



small

Small Container: 58 cubic feet
 (4'X4'X4'10") (LxWxH) \$45



medium

Medium Container: 162.5 ft³
 (6'X5'X4'10") \$60



large

Large Container 225 ft³
 (6'X8'X5'4") \$96

and, of course, extra large ...



You call, WE HAUL!

Phone: (231) 448-4000 Cell: (231) 838-0254

ST. JAMES BOAT SHOP

BEAVER ISLAND,
 MICHIGAN

EST. 1985



231-448-2365

231-838-2883

BILL FREESE & DAN BURTON / BUILDERS
 WWW.STJAMESBOATSHOP.COM
 EMAIL: STJAMESBOATSHOP@YAHOO.COM

Ron Wojan - General Contractor Inc.



Quality Built Homes
 with attention to
 detail and customer
 satisfaction. We build a
 variety of projects from
 small cabins to Lodges.
 Ron has over 30 years
 experience building homes
 on the Island.

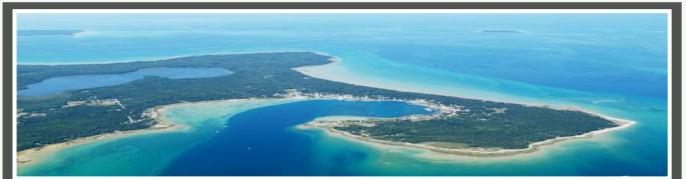
ronwojangc@tds.net

231-448-2400

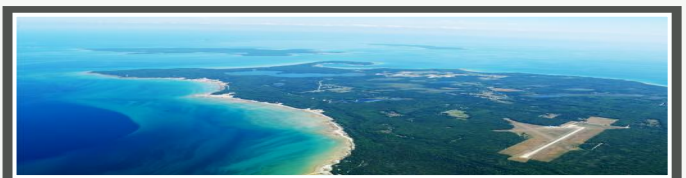
36869 Kings Highway . Beaver Island Michigan 49782

Mark LaFreniere
Painting

Interiors and Exteriors
Free Estimate
231-448-2220



ANDERSON AERIAL PHOTOGRAPHY



e-mail aap.mba@charter.net

phone 231-947-4598

Music in the Woods



WWW.BIME.NET

Beaver Island Association

*Supporting Environmental
and Economic Sustainability*

Join Now! Keep in touch with Beaver Island events likely to affect you and your property.

Receive Island Currents, the informative BIA newsletter.



Contact: Bob Anderson, Treasurer at BIA, Box 390, Beaver Island, MI 49782

Visit our web site: BeaverIslandAssociation.org

**"DICK AND AMY.
AMY AND DICK"
WE DO BLOCK.
STONE. AND BRICK.
(231) 448-2213.**

McDonough Construction is Beaver Island's Insurance Claim Servicer!

Please call us before you call them!
Insurance services for water, wind
and fire damage.

We have worked with several
insurance adjusters on Beaver
Island. We'll work with you to get
the best quote!



McDonough Construction, Inc.

Contact Kevin B. McDonough

Home: 231.448.3038 Cell: 231.675.5444

www.mcdonoughconstructioninc.com

**WELKE
EXCAVATING
SCREENED TOPSOIL**

CALL 448 2374

16. CANDIDATES' FORUM

As candidates for election in Peaine Township, we are asked why we are supporting Jack Gallagher for reelection as Township Supervisor. Here are the reasons why:

Jack has accomplished much in his first term as supervisor:

Jack's belief in open government has resulted in the following improvements:

- Giving more people the opportunity to get involved through committee meeting and vacancy postings.
- Actively seeking and hiring the best qualified people has resulted in substantial savings for the township as noted in the hiring of Peaine's tax assessor who has brought the township into compliance with State of Michigan. Waste Management is running efficiently and the change in legal counsel ensures Peaine Township's interests are properly addressed.
- Keeping citizens informed by:
 - Developing a very complete website with minutes, budgets, ordinances, committee information.
 - Posting all assessment records on-line. You can view not only your assessment and property records but you can view all others in Peaine Township on-line.
 - Posting agendas in advance of meetings, creating and encouraging more audience participation,
 - Providing copies of documents for the public at meetings.

Jack's questioning mind and diligence has resulted in uncovering problems and finding solutions:

- Budgets were based on automatic increases. Jack has reduced the levies because
- his budgets are based on study and fact, not just automatic increases
- The airport committee structure violated state law. A new township airport agreement complies.
- The tub grinder (chipper) costs were draining the waste management budget. Refinancing the tub

grinder (chipper) reduced the monthly debt service.

- Filed delinquent State financial report for 2007 – Corrected 2008 financial report showing major unreported debt.
- The Island lacked internet service. Jack's work to solicit U.S stimulus funding accelerated TDS' investment to provide internet service by connecting existing fiber-optic cable laid years earlier.

We also support Jack for his personal qualities which make him a good Supervisor:

- He is independent and is not beholden to people who want to control.
- He is interested in the good of the Township, nothing he does is for his own self-interest.
- His willingness to study, analyze, and understand Township issues and his legal and accounting background have lead to more informed decision making.
- He is honest and hard-working, patient and courteous under duress. He devotes a great deal of time to the job.

We have formed a team to support Jack because we believe with our help Peaine Township can be taken to a new level of professionalism, planning, budgeting, and dealing with real Island issues.

- Jack is forced to spend a lot of time doing tasks that are not his responsibility.
- He does not receive help from his Board.
- We pledge to keep office hours, fulfill our statutory responsibilities of preparing financial statements, timely minutes, keeping records and being fully prepared for meetings and participating in board discussions with facts.
- We will bring civility back to the township meetings.

—Krys Lyle (candidate for Clerk)
Tina Morgan (candidate for Treasurer)
Brad Grassmick (candidate for Trustee)

Community-interest not self-interest

This is what you got with a Peaine Township Board dominated by power and self-interest

- A million dollar airport blunder
- Uninformed and impulsive decision-making
- Illegal meetings
- Automatic tax increases
- Capitulation to St. James Township interests
- Anger and personal attack at Township meetings

positive change to believe in

Team UP For Change

If you want honest, transparent and representative government, re-elect Jack and elect the team, and this is what you'll gain

- Commitment from the team for competence and professional training to avoid further airport fiascos
- A marketing plan to bring economic vitality to the Island
- Availability of team members in their offices one day per week
- Hard-working board members who will really earn their salaries
- Deputies chosen for competence, not financial aggrandizement
- Collaboration with St. James in determining millages.

Now is the time: Vote for the team
Competent Informed Responsive Independent

Jack Krys Tina Brad
Supervisor Clerk Treasurer Trustee



Island Airways



With our friendly staff and our history of safe, comfortable, and competitively priced flights, we're ready to serve all your aviation needs. We offer Charter flights to a multitude of locations in the United States, as well as freight and passenger services to Beaver Island and Charlevoix. For more than 60 years we have been both Charlevoix and Beaver Island's committed aviation service provider. At Island Airways, you are more than just a passenger, you are a part of our family. Our airport services include maintenance, free wireless internet, rental cars, and much more.

1-800-524-6895 www.IslandAirways.com

Stoney Acre Grill

Seafood*Steaks*Salads*Mexican*Sandwiches*Vegetarian

Pastas*Mediterranean*Appetizers*Pub Fare*Specials

*Thurs-Baby Back BBQ Ribs * Fri-Yellow Lake Perch * Fresh Whitefish Daily * Daily Specials plus full Menu*

High Standards, Great Quality, Low Prices

Donegal Danny's Pub

**Neighborhood Tavern with Island Charm,
Vast Selection and an Emphasis on Service**

Six TV's, IPOD, Wii, Darts,

Friendly Bartenders, Great Prices

Music most weekends...never a cover charge or drink price increase

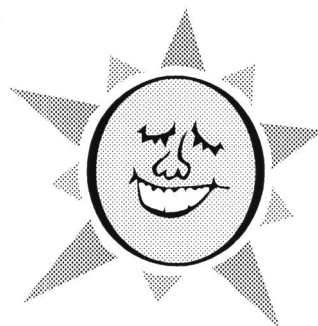
Open 7 Days

448-3000

**Stoney Acre Grill &
Donegal Danny's Pub
are For Sale**

Interested Parties Please Contact

Liam & Marilyn (231-448-3125)



Lunch

**Mon-Sat
11am-2pm**

Dinner

**Mon-Sun
5pm-9pm**

***Carry-Out
Available
*Rides
Available**

**One Mile South of
The Boat Dock Off
The King's Own Hi-Way**

448-2560

CANDIDATES' FORUM

ob-fus-cate – to make obscure or unclear: to obfuscate a problem with extraneous information.

Dictionary.com

I sincerely appreciate that both the *Beaver Beacon* and the *Northern Islander* published my letter in their respective July editions. Your readers may recall that my submission was in response to an open letter from Jack Gallagher, Krys Lyle, Tina Morgan, and Brad Grassmick that was published in the June issue of the *Beacon*.

In their letter, Mr. Gallagher and his co-authors made a pledge that, if elected, they would conduct township business in a transparent manner, with no backroom deals. Previously a FoIA request filed by the *Northern Islander* revealed a controversial letter from Mr. Gallagher to the DNR. That letter promoted the agenda of the former Natural Resource Eco-tourism Commission, while dismissing the legitimate interests of the Wildlife Club

and the Conservation Club.

Accordingly, my letter suggested that Mr. Gallagher and his co-authors reconcile their pledge with Mr. Gallagher's apparent attempt to circumvent the township board.

Their response which appeared in the August editions concedes that Mr. Gallagher concealed his letter to the DNR, but nonetheless declares that "no reconciliation is necessary." Instead, the authors provide an entirely unrelated discussion of the Supervisor's rights and responsibilities. The reader is apparently left to assume that Mr. Gallagher was somehow entitled (or, even required) to withhold his letter from the township board as well as his constituents.

Peaine residents are entitled to a coherent explanation. In the absence of such an explanation, Peaine voters should assume that Mr. Gallagher and his co-authors will discard any or all of their pledges if and when it suits them.

—William Kohls

CANDIDATES' FORUM

I have been the Peaine Township Treasurer for the last four years, and am again asking for your vote for that position. After marrying Donna McCafferty 42 years ago, I began visiting Beaver Island regularly, and we moved here permanently 12 years ago. Presently, I am employed by Island Energies as a clerk and by Prudential Preferred Properties as a realtor. Donna has been the director of the Beaver Island Rural Health Center for 10 years. Six years ago, I was appointed to the Peaine Township Planning Commission, and I am still serving on that board. More recently, I was appointed by the township supervisor to the Zoning Board of Appeals, and a few months ago he requested that I serve as an intergovernmental liaison with Beaver Island Emergency Medical Services. By faithfully attending these various commission meetings and having attended every township meeting for the past four years, I have a much broader view of not only Peaine governmental issues, but how the Island's two townships must work together to serve its citizens.

During the past decade the Island spirit of cooperation has resulted in a new fire station along with new fire trucks, a resale shop to help support the fire department, Forest View apartments, an advanced life support EMS, and a new health center. A new school was recently built, as well as a community center.

Over the last four years, a rift has developed between St. James and Peaine Township boards. While there will always be disagreements, the spirit of cooperation and resolve to work together must be reestablished. Recriminations and stubbornness will not benefit our citizens. Unwillingness to negotiate in good faith will stall continued progress for the Island.

The cooperation that was required to create will have to continue in order to maintain these accomplishments. The elected Island leadership will need to compromise and negotiate among themselves to maintain progress and safety. My experience as a board member and my receptive nature will assist in helping renew the dialogue.

—Larry Kubic

19.

Restaurant and Ice Cream Parlor
On
"Ice Cream Hill"
New Owners: Mark & Kathie Ehinger

Daddy Franks

A Beaver Island Tradition!!

OPEN
May-September
(SHORTER HOURS AT THE BEGINNING AND END OF SEASON)

BREAKFAST-LUNCH-DINNER

Kitchen open- 6am-9pm
Ice Cream til Close

Eat In or Take Out
448-2570

daddyfranksrestaurant@yahoo.com

**Lost at the Music Fest:
a Gift Jewelry Box.** Copper and
amber beaded lid, gold color satin,
contained gifts from family and
friends: navy satin pouch with purple
embroidered dragon, Mexican cloth
bag, blue crystal earrings, amber
crystal earrings, gold tone Ahnk
earrings. Please Return, great
sentimental value, **REWARD**, no
existential questions asked-448-2312

Martin Well Drilling

- Residential and Commercial
- Water Wells: 4", 5", and larger
- Modern Rotary Well Rig

Also ...

- Pump Installations
- Well Repairs

If you want a well now, I have the equipment.

Call Bud @ 448-2197
or 448-2397



20. A SPLENDID DEDICATION

In 2005, John Woollam purchased 13 acres, and began to purchase other contiguous parcels for his planned preserve. Over the next four years he added five pieces, resulting in a total of 27 acres and 500' of Lake Michigan shoreline. In the spring of 2011 he worked with Little Traverse Conservancy to place a conservation easement over the entire acreage. And that fall, he donated the land to the Conservancy as the George and Althea Petritz Nature Preserve.

"The protection of this spectacular

land was due to John's singular commitment to seeing it stay natural," Conservancy land protection specialist Ty Ratliff had said the previous year. "His interest in the region started simply with the Island as a sailing destination. Since then, he has truly fallen in love with Beaver Island, its shoreline, and its people."

On August 7th a small group of naturalists gathered to dedicate the George and Althea Petritz Nature Preserve northeast of St. James. John and Cindy Woolam were there, with Althea

Petritz and children David, Dosie, George, Jr., his girlfriend Renate', Dave and Marilyn Clark Duda, Bill Cashman, Jeff Cashman, Larry and Maureen Hansz, Satch Wierenga, and Pam Grassmick. The Petritz family carted in sandwiches and chilled champagne for a two-hour meditation on the increasing importance of maintaining a few corners of peace and tranquility in the midst of natural beauty. The first toast was, naturally, to John Woollam for his vision and his ability and willingness to make his vision a reality.

THANKS TO THE BIEMS AND BIRHC

On behalf of my family, I would like to thank the BIEMS and Rural Health Center for the quick response and care they provided to my father, Joe Hurst, (a long time summer resident on the South end) on Sunday, July 1. He had an unfortunate mishap with a chainsaw that collided with his leg and needed immediate medical attention. We

applied basic first aid at the home my husband Kirk and I recently purchased on the South end of Sand Bay. Madly trying to get a cell connection while transporting Dad toward the Health Center, we succeeded in reaching 911 and were happily relieved to be greeted by 6 EMS responders when we arrived. Special thanks to Chris, the P.A. who stitched Dad up in no time,

and to our neighbor, Jerry LaFreniere who provided needed comic relief and later helped us un-bury the 4WD truck that did not succeed in transporting my injured dad up the hill & off the beach (due to only 2WD working). Thank you very much from both my parents and my husband and I. We are looking forward to becoming full time islanders soon!
—Brenda Welter

NEW AT SCHOOL

While the Island school bids a sad farewell to 11 seniors, it welcomes some new faces.

Incoming pre-schoolers are Alexis Coffell, Sophie McDonough, and Aedyn Oliver. Also new this year: 4th grader Ruby Antinori, 6th grader Sveta Stebbins, 8th grader Olya Stebbins, and 10th grader Chaise Laufenburg.

BICS intends to implement some upgrades to improve student and staff access to technology:

- Install monitoring software to allow selective blocking of inappropriate

sites, or parts of sites, and better tracking of user work if necessary;

- Provide 12 iPads for educational use in 6 classrooms;
- Provide Dell Latitude 2120 Netbooks for each high school student and 3 per K-8 classroom;
- Replace current aging teacher laptops; existing teacher laptops that are still usable will be redeployed to classrooms for student use; and
- Install 2 building wireless access points to provide more coverage. This will be done in a month.

LET'S WALK

A late-August meeting of the Museum Planning Committee produced some interesting ideas. One, creating a self-guided walking tour for next summer, met with much approval. (If this is done, a self-guided tour of historic sites all over the Island could be produced the following year, it said.)

Its members put together a plan:

- 1) create and edit a statement of purpose and goals for the project;
- 2) identify all possible sites in or near St. James, and select those (perhaps

- 10-12) appropriate for a tour;
- 3) with help from the property owner draft a text for each one and locate "then and now"-style pictures;
- 4) talk to the BIHS sign maker, select a style, and get a price;
- 5) talk to the owners of the selected sites to get permission to place a sign;
- 6) edit the sign content;
- 7) create a project budget;
- 8) apply for grants and hold special-event fundraisers;
- 9) publicize the project to the commu-

THANKS!

The Runberg family wishes to express their appreciation for the love shown them when they recently lost a granddaughter, niece, cousin, in a motorcycle accident in Bay City. So many people visited, made phone calls, sent cards, gave hugs when meeting us in town. Prayers were offered for Shilo, and the warmth shown us was overwhelming. Thank you all so much.

—Johnny, Joyce, John, Carol, Julie, Tasha, Christine, and all the family. We feel so lucky to be part of such a caring community.

- nity to get more input;
- 10) build and place the chosen signs, and prepare the various accompanying media—brochures, downloads, player loans; and
- 11) paint a line (perhaps of small foot-steps) through town to make the historic signs easy to find.

So if anyone would like to suggest historic sites that should be considered, all they have to do is drop a line to MPC, P.O. Box 263, or email history@beaverisland.net.





DRUM IN

Another new idea was made manifest on Beaver Island when Mike Weede and

Bob Banville invited friends to gather near the Memorial to the Dead at Sea on the evening of August 10th for a Drum

Circle. Twenty-five people brought chairs and placed them around an unlit campfire (the wind was too strong),



EXPEDITION TO GARDEN:

The metal detector gave a low metallic whistle as Kevin ("Yello Cake") slowly swept back and forth over the rocks and weeds. He glanced at us with anticipation and swept again, another electronic grunt.

Photograph courtesy - Robin "Killer Bee" Hutsko

Each pass was accompanied by another alert. Ben ("Phantom") approached with a rusty iron stake and chopped at the ground. We all watched and thought, "probably another nail" – during the past 45 minutes that's all we had found. Soon

Photographs courtesy - Dan "Blue's Clues" Selvidge

it became evident there was a large rock buried there . . . maybe even the elusive US Lake Survey monument. As we cleared dirt and stones we noticed the rusty steel rod in the center of a cement mass just 3" below the surface. We found





with the circle widening with each new arrival. A professional drummer from the Celtic-based group An Dro, Carolyn

Koebel, set the tone and indefatigably kept up the beat, allowing others to join in or fall out as they chose. Half of those

gathered took part in the drumming at one time or another, some on their own drums, others on *continued on page 24.*



PIRATES OF THE ARCHIPELAGO II

it, the U.S. Lake Survey marker from 1917. It was “officially” lost for almost 100 years – until today.

We were on another expedition, one of many to the uninhabited islands of the Great Lakes. This would be the 23rd

Photograph courtesy - Dan “Blue’s Clues” Selvidge

official Great Lakes expedition of the Fortune Bay Expedition Team. After so many expeditions, I had thought they would get tiresome, but they never do. There is always something new to learn, somewhere to explore, another lost item

to be found and friends to be made.

This was our second year working and playing on Garden Island. Garden Island is a 5,000-acre floating forest just a mile and a half north of Beaver. It has not had a permanent resident *continued on page 24.*

Photographs courtesy - Robin “Killer Bee” Hutsko





Drum In, continued from page 23. pots, pans, helmets, a wooden crate, or a cookie tin. As the sun went down, the universe shrunk—until it was pressing them into a tight kernel. The sounds

became more unified, the rhythm tighter. Nothing else mattered, at least for awhile. But finally someone noted, “Hey, it’s getting late,” and the impromptu band broke up. Everyone promised to meet

again next year for a reprise, and to bring their friends. “Our goal,” one young woman proclaimed, “should be to have most of the people on Beaver Island here in our drum circle! What d’you say?”



Expedition to Garden, from page 23. for well over half a century, but its rich history has endured.

The lonely islands of the Great Lakes are a sort of “history preserve.” Garden Island holds onto her past. Visitors are keen to explore what was, but rarely thinking of what “could be.” In consequence, there is no modern progress on the island, just the wilderness and the melting memories of “what was.” Nature takes her time with the island, eroding her memories without haste. These are the museums of the adventurer.

Garden has very little for a modern world. There are no campgrounds, no stores, no roads and no facilities that would define a modern camping experience. The island boasts two research stations used a month or two

each year. But the rest of it is slowing turning to wilderness.

The day before, Captain Jon Bonadeo anchored the *Liberty* in Northcutt Bay and after a short ride in the skiff, ten members of the team waded ashore to set basecamp. Mike (“Sea Chicken”) and I kayaked the rolling waves and blazing wind from St. James to the bay. From our basecamp on the shores of the bay, we set off on our assigned tasks, and spent the evenings around a glowing campfire until the small hours of the morning.

Our job was to explore a few historic features, document our findings, and improve the trails. We delved into the island’s history, the lonely graves, the spirit houses of the Anishinaabeg burial grounds, the DNR research station, and the Minuss Kitigan Drum spiritual

settlement. We searched for century-old survey markers of the U.S. Lake Survey. We discovered the last standing wall of the post office, named “Success, Michigan” (ironically a town only on the map for a year). We cleared trails, progressing slowly as we cleared blow downs and overhangs. Occasionally, we would turn to discover forgotten ruins or weathering walls of time-honored structures.

The kayak team circumnavigated the coast, surveying the shoreline and battling the 25-knot winds and 3-5 foot waves. The wind and waves have a long tradition of wreaking havoc on the island’s northwest coast.

The ground team bushwhacked to the highest point on the island, just a short distance from the same storm-hardened shore. Occasionally the

Welcome Jenna Wilk – 21cclc Site Coordinator – On August 6th, three candidates (of six who applied) were interviewed for the position recently vacated by Laura Gibson.

Ms. Jenna Wilk was the unanimous choice of the interviewing committee, which consisted of Char-Em ISD 21cclc Director, Christy Cloud-Webb, Beaver Island Community School board member Jessica Anderson, teacher Adam Richards, 21cclc employee Patti

Welcome Jason Darwin - Custodian – On July 24th five candidates (of eleven who applied) were interviewed for the custodial position.

Jason Darwin was the unanimous choice of the interviewing committee, which consisted of school board member Barbara Schwartzfisher, administrative assistant Alice Belfy, custodian and teacher aide Mary Palmer, and principal Kitty McNamara. Jason Darwin is

Cull, and principal Kitty McNamara.

Working in the school last spring as a long-term 7–12 grade substitute teacher she connected with the students and families. She is excited to move the program forward and to become a member of the Island community.

Applicants were required to have a Bachelor's degree in an educational field. The hiring process included checking references and past work experience of the candidates selected for

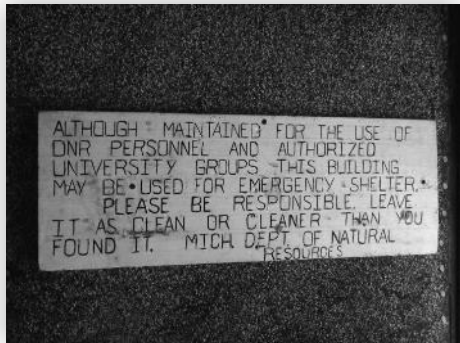
excited to fulfill a long-time desire to live on the Island and put his great job experience and excellent work record to the test here.

Jason has been coming here since he was a child, and his parents own property here.

The hiring process included checking references and past work experience. Each interview included a set series of questions, after which the committee

interviewing, and interviews which included a series of questions after which the committee unanimously selected Jenna Wilk for recommendation to the school board. On August 13 the school board approved her as the new site coordinator. She will attend training in Lansing on August 19th and 20th and will report to work in the building on August 24th. The after-school program will likely begin on Monday, September 17, 2012.

invited two candidates back for a building walkthrough and second interview. The committee unanimously selected Jason Darwin for recommendation to the school board. On August 13, the school board approved Jason Darwin as the new custodian. Jason's first order of business is helping Mary Palmer get the school ready for students to start on Wednesday, September 5, 2012.



Photograph courtesy - Robin "Killer Bee" Hutsko



Photograph courtesy - Dan "Blue's Clues" Selvidge



Photograph courtesy - Dan "Blue's Clues" Selvidge

ground team would radio the sea faring paddlers to exchange progress reports. The kayaking team would respond with a wind-soaked radio transmission, shouting as if they were taking enemy fire from the weather.

We visited Kee's cabin at the Minuss Kitigan Drum camp. The members had left a few weeks before and the camp was empty, but the cabin still offers supplies and shelter to those who are shipwrecked or starving. Kee's cabin and the DNR research cabin both have posted signs explaining that you are welcome to the supplies—If you are in trouble, but to be respectful if you are just visiting.

Keewaydinoquay Pakawakuk Peschel (Kee) is the most famous island resident. She was a scholar, ethnobotanist, herbalist, medicine woman,

teacher, and author. She was an Anishinaabeg Elder of the Crane Clan. She spent a lot of time on Garden, a traditional Anishinaabeg homeland, in her great-uncle Shaboose's cabin researching and teaching. She was born on a fishing boat en route to the hospital from South Manitou Island. Shortly after her birth, the boat capsized; luckily she survived. Local legends describe her as a real Shaman with limitless wisdom. She also completed the course work for a PhD and dedicated her life to sharing the Anishinaabeg ways with all people. Kee's memory seems to set the tone for our visits to the island—a sense of respect, curiosity, and wisdom.

The last few hours there were bitter for the team. We didn't want to leave. It seemed we still had exploring to do ... of the island and ourselves. But as we

always do, we packed up. The kayakers headed back to St. James, and Captain Jon returned, as promised, to take the rest of the team back to Beaver Island. We all felt there is much more to glean from this mysterious haven. Standing up in the boat as the shore became less and less distinct, each of us made the same silent vow: We'll be back.

—Chuck Hayden

Links:

U.S. Lake Survey – greatlakesmaps.org/Default.aspx?tabid=55

Fortune Bay Expedition Team – www.fortunebay.org

Captain Jon Bonadeo – www.beaverislandboatcharters.com

Keewaydinoquay Pakawakuk Peschel – en.wikipedia.org/wiki/Keewaydinoquay_Peschel

Garden Island – [en.wikipedia.org/wiki/Garden_Island_\(Michigan\)](http://en.wikipedia.org/wiki/Garden_Island_(Michigan))

26. BI IN THE LEADERSHIP CHARLEVOIX COUNTY PROGRAM

Multiple Island businesses and organizations have collaborated to sponsor a Beaver Island participant in the 2012/13 Leadership Charlevoix County program. Led by community leaders, the nine-month program will introduce participants to the various sectors of the county, as well as the inner workings and needs of the region.

"Leadership Charlevoix County is designed to cultivate new, emerging and potential leaders from our area," said program coordinator Mishelle Shooks. "We also hope partici-

pants will identify and address pertinent community needs while strengthening their own individual leadership abilities."

The selected Beaver Island applicant, Karen Johnson, was accepted into the program and is being sponsored/supported by: the BI Chamber of Commerce, the Beaver Island Association, Hodgson Enterprises, Inc., Island Airways, and the BI Community School, with additional supporters pending. Should any individual or organization also wish to support, please contact Ann

Partridge at (231) 448-2022, or email bicommunitycenter@tds.net.

Karen is a current BICS School Board Member, owner of The Blue Pearl gift/retail shop, mom to Reese, Jady, and Brody, and wife to Paul, another BI small business owner.

The nine-month course, running from September 2012 through May 2013, will take participants throughout the county and includes sessions in:

- Connecting with government
- Health and human services
- Economic development



We are more than just a laundromat and carwash!

We store boats, cars, campers, household items, construction materials...

YOU NAME IT, WE CAN STORE IT!

We have affordable month to month rates, 9 month rates, or yearly rates.

Hurry, space is limited!

Call us for more info at **448-2235** or **448-2050**



We like to

Move It Movers

Drywall & Firewood
Spring Cleaning & Tree Removal
Trucking & Maintenance
Cottage Rentals!

PO Box 110

Beaver Island MI 49782

Phone: 231 448 2670

Dave Avery

Beaver Island Marina



At Your Service:
Transient Slips
Fuel - Charts - Shipstore
Auto & Boat Repair
Licensed Mechanic
Storage & More

**Gas Station and Car Rental
Gold Card Savings**

Check out our ship store: Gifts, Bait, and More.

25860 Main - P.O. Box 76 - Beaver Island, MI 49782

MARINA (231) 448-2300 - FAX (231) 448-2763

AUTO / REPAIR SHOP (231) 448-2307

www.beaverislandmarina.com

VAN & GEO RENTAL

PICK UP AT BOAT OR PLANE



Multi-Day Discounts

4 HR. Rates available

Call: 448-2300

BEAVER ISLAND MARINA

E-MAIL: Pat@BeaverIslandMarina.com

- Education today
- Communication, creativity, business ethics, and media relations
- Arts, culture and philanthropy
- Environmental and natural resources

In addition to the monthly sessions, the course kicked off with an orientation in Charlevoix August 22nd where participants were matched with a mentor who will help open doors to personal and professional growth. "I am just reeling from all of the information, ideas and potential benefits of this program for the

Island I have already received," said Johnson. "I am very excited to be a part of it and wish to personally thank all of the sponsors."

The first session of the program is a "Team Building Retreat" which takes place on Beaver Island Sunday and Monday, September 9 and 10, featuring many BI organizations and team leaders from the community. One of the tasks the participants will begin to focus on as a team during this retreat is developing a Community Service Project to be undertaken as a class. Beaver Island

organizations in need of assistance with a project are encouraged to submit ideas through the LCC website @ www.leadershipcharlevoixcounty.com/submit-a-need.html or to contact Karen Johnson directly at 448-2134 (work).

The program culminates with a graduation ceremony in May 2013.

It is sponsored by the Boyne City, Charlevoix, and East Jordan Chambers with support from the Beaver Island Chamber. The program is made possible by a generous grant from the Charlevoix County Community Foundation.

Gregory Larson Architect

*Offering Quality Architectural Design Services to
Beaver Islanders for over 25 Years*

1514 Mifflin Street
Huntingdon, PA 16652 Phone: (814) 643-5053
greglarson1@verizon.net Fax: (814) 643-0972

Re-Elect Gillespie Commissioner, District #5

- Continuing a Policy of Fiscal Responsibility
- Fair & Responsive Representation

Accomplishments in office:

- Bringing the water wagon to the Island to assist with dust control.
- Significant role in repaving of Boyne City Rd. and getting road work accomplished in Norwood Township. Planned assistance to work with Road Commission for upcoming Kings Hwy. repaving project., and working to bring a grader to Island on a permanent basis.
- Reworked County Health Care benefits to save taxpayer money.
- Commission on Aging liaison, working to reduce costs and increase efficiency, such as new voucher program on Island.



I do not seek this position for personal benefit but community and county benefit, I have proven that time and again and ask for your vote!

Paid for by the Committee to Elect Richard L. Gillespie
P.O. Box 217, Beaver Island, MI 49782

BEAVER ISLAND COMMUNITY CENTER

At the Heart of a Good Community

September Hours: Mon – Fri 9am – 6pm . Sat 9am – 9pm . Sun Closed
email: bicommunitycenter@tds.net . phone: 231 448-2022

Check out upcoming Events, Movies & Activities at
www.beaverislandcommunitycenter.org
and join us on Facebook!



Events

Saturday "Double Feature Movies"
Return! * 3 pm & 7 pm
*Check the Community Center & website for updated listings!



Weds & Thurs, Sept 5th & 6th Celtic Dance Workshops & Drummin'!

Step up to some Irish Step Dancin' and/or join us for some drummin'! Times are being coordinated with the BI Community School, so check Community Center for details!

Fri & Sat, Sept 7th & 8th 7:30pm — A Celtic Music Mini-Fest!



A full weekend of Celtic-music fun! Featuring **GOITSE & RUNA** (w/Dave Curley from SLIDE)! The finest of traditional and contemporary Irish music—a Celtic Double Header! "All Ireland" winners on both Bodhran and Ceili Band drums, Banjo and 3 time Mandolin winner, not to men-

Saturday, October 6th 11am-4pm Bite of Beaver "Arts, Crafts & Goodies!" Sample the "other" goodies of the Bite of Beaver festival! Come peruse Artisans' and Crafters' wares, as well as specialty jams, jellies and (gift-giving?) treats of all kinds! Prizes and yummy samples! PLUS special kids' activities area featuring "Create-a-Beaver Island Beaver" station with goodies!





tion "All World" Banjo title holder, a singer currently with the cast of Michael Flatley's world-renowned dance show 'Lord of the Dance', 3 dancers, 2 fiddlers, 3 guitars, whistles, pipes, piano, accordion and a flute! Mighty Craic! Tickets: Adv/\$20 Door/\$25 Combo/\$35

Special thanks to our sponsors and supporters: The Shamrock, Beaver Island Boat Company, Beaver Island Lodge, The Brothers' Place, Dalwhinnie Bakery & Deli, Hogarth's Pest Control, McDonough's Market, L&L Carpet Cleaning, Beaver Island Gardens, Beaver Island Marina, Charlevoix State Bank, StillPoint Photography, & Island Energies.


**BEAVER ISLAND GOLF COURSE
& DRIVING RANGE**

A WEE BIT OF SCOTLAND ON THE EMERALD ISLE


**DRIVING RANGE
SUMMER LEAGUES
& TOURNAMENTS**

BEAUTIFUL FROM SPRING THRU FALL

BEAVER ISLAND PRO SHOP -
POWER CARTS, CLUBS, BALLS


231.448.2301

Tour the golf course online at
www.BeaverIslandGolf.com

Paradise Bay Dive Shop and Resolute Water Transfer and Taxi Service




PROVIDES:

- OUTER ISLAND ADVENTURES
- SNORKELING AND DIVE TRIPS
- SCUBA DIVING CERTIFICATION
- SUNSET CRUISES
- UNIQUE WEDDINGS
- GUIDED AND UNGUIDED TOURS

**THE RESOLUTE IS DNR CERTIFIED
AND MIKE IS A LICENSED COAST
GUARD CAPTAIN**

CALL 231-448-3195 OR
231-448-2708 FOR INFORMATION
AND RESERVATIONS



BILL KOHLS

**RESPECTED
CHOICE
FOR
PEAINE
TOWNSHIP
SUPERVISOR**

PAID FOR BY
THE COMMITTEE TO ELECT WILLIAM KOHLS

Landscapes by Barb

Fall Plant Sale

Call
231-448-2035

For Prices, Sizes, Species

Trees, Shrubs, Bulbs
Natural Flagstone
Also Available:
Plant Installation
Flagstone Installation
Tree and Brush Removal
Raking & Bed Clean-up
Mulching for Winter

**No more “this-and-that”-ing. Let’s just
get it done!**

 **Vote**

**Nancy
Ferguson**

COUNTY COMMISSIONER



Paid for by the Committee to Elect Nancy Ferguson County Commissioner, 231-547-2285

Ten Years Ago: The *Beacon* welcomed Rita Rusco, the "Queen of the North," an elderly woman who had grown up on North Manitou Island and was visiting to plug her new book and video about that island's history. Her family was one of the first settlers there, she one of the last.

Eric Myers, newly presented with a PhD in Forestry, announced he was starting the Island's first ecotourism business with his wife – both CMU grads – after having gone on ecotours on their honeymoon.

Bruce Bauman, fiddler, guitarist, and organizer of the Wheatland Music Fest, sat in on Connie Wojan's *Story Hour*, entertaining the kids by playing and singing stories.

PABI sponsored a story-telling evening at the Peaine Hall, with Doris Larson and her friends from the Grand Rapids Story-tellers' Circle, plus two of the Island's best tale-tellers, Pinky Harmon and Phil Gregg.

The Beaver Island Internet Company retracted its promise to provide a new and faster source for internet service because of a lack of financing.

Jeff Powers hosted a Lumberyard Party, with free beer and pirate music provided by Beans.

John Swanstrom's watercolor class at CMU held its season-ending Art Show, with many of the artists on hand to observe the public's reaction to their painting. "Many of us peek over the artist's shoulder when they first set up around the shore, and are privy to the beginning of the creative act," the *Beacon* said. "It's a wonderful experience to take in the art show at the end, to witness the transformation in the vision and understanding they undergo. The effect of standing in these two large rooms packed with burgeoning art made from the scenes with which we live is quite profound. We might be able to withstand the influence of a few works of art, but to see so many focused squarely on us as we circle the room imparts a sense that, without quite knowing it, we live in a realm of true inspiration. Granted, by attending the show we give the artists some necessary feedback, but they give us much more: a feeling that we are blessed to inhabit a virtual paradise."

In the election, Tina Morgan was

voted in as Peaine Treasurer, and the airport millage lost by eight votes. "Most observers feel this result reflected a lack of information about why the Township Airport's continued improvement is an important piece of the puzzle in the effort to raise our economic prospects and quality of life," the *Beacon* stated. Supporters planned to put the measure back on the ballot in November, and campaign more vigorously for its passage.

Thanks to Senator Phil Hoffman, a piece of the World Trade Center arrived on Beaver Island. After much discussion it was placed at the Fire Hall.

Consultant Arlene Brennan presented her final report on Health Center operating recommendations.

Twenty Years Ago: The September issue, the Glendons' first, sported a "new look," going to a justified three-column format with tighter graphics.

The featured story concerned the Medical Center's efforts to obtain federal designation as a Rural Health Clinic, a prerequisite for continued federal funding. The article mentioned that Mike McGinnity was about to begin training to become a Physician's Assistant. Other articles boasted that our school enrollment had improved from 78 to 82, that the co-ed soccer team had won a tournament, and that the YETP was having some degree of success with its Lighthouse School. Bill Freese was profiled in this twelve-page issue.

Thirty Years Ago: This old-style *Beacon* contained a calendar as a front page, listing the Sweet Adelines meeting every Monday and Waist Watchers every Tuesday. The CMU Closing Party came early – on September 25th. Inside, the DNR reported the August temperatures, which ranged from 36 to 80 degrees. Ham Gebert supplied a Deputy's Report, in which he cautioned against "Wagging Tongues." "There have been several wagging tongues lately discussing various topics – some informed, some uninformed, some misinformed. The old adage certainly applies: 'Don't believe anything you hear and only half of what you see'." Welcome to Beaver Island.

This was a sad time for Beaver Island. The *Beacon* reported the deaths of Musette LaFreniere

continued on page 31.

CHARLEVOIX'S BEST Beaver Island Resident Rates



Make the Weathervane Terrace Inn & Suites part of your Beaver Island commute. **Only Island residents** receive discounted lodging rates all year.

FREE Deluxe Continental Breakfast
In-room Refrigerator & Microwave
Wireless Internet Access (free)
Outdoor Pool * Indoor Hot Tub Spa Tower
All Rooms have ~ 32" Flat Screen & DVR

RATES FROM \$47.00 off season

Weathervane Terrace Inn & Suites

231-547-9955 • 800-552-0025

One Eleven Pine River Lane
Charlevoix, Michigan 49720

Discount available to island residents only. I.D. required

Now doing wells on Beaver Island!



(231) 228-5678

4" & Up Steel Wells

5" PVC Wells

Pump Sales & Service

Well Repair

Mark Zientek

John Zientek

NATIONAL WATER WELL ASSOC.

Certified Contractor

Fax (231) 228-5637


233 E. Kasson Rd.

Maple City, MI 49664

Back to school!
 Love and respect of the Word
 is the beginning of wisdom.

Lighthouse Fellowship
 Services every Sunday at
 9:30 a.m. at Pease Township Hall, with
 Sunday School for children at the same time.
 Bob Hoogendoorn, pastor.

km
contractors



Commercial & Residential Construction
 specializing in custom wood homes
 Remodeling ■ Roofs ■ Decks
Ernest Martin
Beaver Island Office
 Phone 231-448-2074 ■ Fax 231-448-2047
 email: kmcontractorsllc@gmail.com
 web: www.kmcontractors.net

Larry Laurain Construction
Licensed and Insured
 Custom Home Construction
 Remodel • Additions • Garages



Free your inner architect and enjoy
 a worry-free project by working with
 Larry Laurain Construction.
 Custom New Homes
 as well as quality additions and remodels.

231.448.2055

BEAVER GEMS, INC.

- General Contracting
- Specializing in commercial construction on Beaver Island
- Homes
- Crane Service
- Projects from remodeling to cell towers!




Call for more info: **231-448-2235**
 email beavergemsinc@tds.net fax 231-448-2740
 web www.beavergems.com



Beaver Island Rural Health Center Beaver Island Community Center CMJ Gillingham Academic Center

On This Date, continued from page 29. and Perry Gatliff, and told the story of the three Ken boys who were lost at sea. Johnny (17), Denny (13), and Kenny (16) Kenwabikise were in the habit of checking their nets out near the two-mile buoy in the morning before going to school. On September 2nd they rose at 4:30 a.m. and set off in a small boat with a bad reputation in weather that was more like late October. When they failed to return, a search was mounted with boats and planes, but it had no luck and was called off at dark. It was resumed early the next morning, with added help from 9 State Police divers. A net box and chart from their boat were found at Pete Manitou's Bay on Garden Island that afternoon. The next day divers found the bodies of Denny and Kenny near the sunken boat not far from their nets. Johnny's body was found at Grape Island the next day by Bucky Vreeland, who had ridden to Pete Manitou's Bay with Dick Burris. The loss of these fine young men threw a pall over Beaver Island for some time. We remember still; a memorial was held on Labor Day weekend at which their friendly smiles and courteous behavior was recalled.

Forty Years Ago: The Island was proud that after several delays, the King's Highway was finally paved.

A NEW REIGN



Long-time BIHS president Johnny Runberg, who gave way to Doug Hartle, receives an award from trustee Charlie Donaldson. Vice-president Alvin LaFreniere was also honored as his replacement, Barry Pischner, looks on. By combining a personal knowledge of Island history with a sense of how to steer an organization away from the many potential pitfalls, they brought the BIHS a long way.

Twenty years later the law suit ³¹ against the Road Commission was underway; when they tore it up, we had not understood that funds to replace it were not yet guaranteed.

Jim Banghart won the Beacomber Golf Tournament. His trophy was a lamp made from one of the shipwrecks found by Beaver Gems. On it is a plaque with the following information: Beachcomber Open; 1st Place; Beaver Island Golf and Country Club; August 5, 1972.

Sixty-six students enrolled for the start of school. Four Sisters served as teachers and staff. In this time of declining population, three new residents were welcomed who would come to play a significant role in shaping the Island's future: Phyllis Townsend, Vivian Visscher, and Dave and Shirley Gladish.

Fifty Years Ago: In this last issue for Burdene Stromberg before Lil and Phil Gregg took over, an apology was made for prematurely reporting the death of Charles LaBelaunga, which was forced on them by Mr. LaBelaunga arriving from Munising for the Homecoming festivities. It turned out the mistake was not the editor's fault: there were two Charles LaBelaungas, and the one who had lived on Beaver Island was not the one who had died.

HOSPICE NEWS

We would like to remind you that we maintain a considerable variety of equipment in our Loan Closet. This is free of charge to all. We have hospital beds, wheelchairs, bedside tables, commodes, shower seats and tub rails; also a tub life and bidet for long-term patients. And there are crutches, walkers, and incontinent supplies.

We want to clarify our name change. *B. I. Hospice* is now affiliated with Munson Hospice of Traverse City, and provides care for patients in their end-of-life experience. *Beaver Island Helping Hands* provides respite care (relief for the caregiver) and needed assistance for the homebound and those with limited mobility from health problems. There are many volunteers who can help. Just phone Joyce Runberg (2387) or Lois Williams (2475).

We operate strictly on donated funds, and are most appreciable of your continuing generosity.

SHAMROCK

Restaurant & Pub
Beaver Island, Mi



FOR SPECIALS & EVENTS

CHECK US OUT ON FACEBOOK &

SHAMROCKBARRESTAURANT.COM

THE ISLAND'S BEST STAFF & SERVICE

FREE WI-FI. OPEN 7 DAYS

www.ShamrockBarRestaurant.com



"Life is Better at the Beach!"

HARBOUR MARKET

Bareman's Ice Cream

Home Baked- Scones, Muffins, Cookies

Beer, Wine, Liquor, Soda • Candy • Free Wi-fi

E.J. Hodgson Enterprises, Inc

Shamrock Restaurant & Pub 448-2278

Harbour Market 448-2950 • Beachcomber 448-2469

32. IN MEMORY: BILL SCHERER

William "Bill" Robert Scherer: September 16, 1934 - August 8, 2012. Bill was born September 16, 1934 in Barrington. He graduated from Barrington High School and entered the US Army, serving as a Staff Sergeant and tank commander in Erlanger, Germany. Together with his wife Sue, Bill owned and operated Scherer Maintenance, keeping many properties beautiful and expertly maintained throughout McHenry County. He was someone

everybody who knew him liked.

He built a two-story cabin on Oak Street in 1979, and was quickly accepted as part of the Beaver Island community.

Bill and Sue raised two sons and two daughters in Crystal Lake. Bill loved watching birds, especially loons, and fishing with his beloved grandsons at his summer home on Beaver Island. Bill also loved adding doo-dads to his many automobiles, his highly organized toolboxes, and "runnin' and chasin'" around town.

Bill left this life on August 8, preceded by his grandparents, his mother, father and his daughter Kristine. He is survived by his wife Sue, his children Rob Scherer, Scott Scherer, and Karen "Missi" (Bill) Disch, and his grandsons Matthew (Melissa) McDonald, Patrick (fiancée Sara Preston) McDonald, and Nathan, Jack, and Ben McDonald. His greatest joy came from his many family and friends, and his warm smile and big hugs will be dearly missed.

RUTH ANN GATLIF

Ruth Ann Gatliff (nee Hinman) was born October 28, 1926 in Chicago and entered into rest August 26, 2012 in Warren at the age of 85.

She was the beloved wife of the late Joseph and loving mother of Barbara

(Walt) Haag, Thomas (Gina), Mary (Robert) Ferenc, JoAnn, Connie (Chris) deRuiter, Shirley (Paul) Cole and the late Robert. Ruth will be missed by her many grandchildren and great-grandchildren.

The funeral was held at St. Joan of

Arc Catholic Church, 21620 Mack Ave at Vernier Road, Saint Clair Shores.

She was interred at Holy Cross Cemetery on Beaver Island just a few weeks ago, with many family and friends on hand.

HELPING HANDS ON A ROLL

It is with great regret that we inform the community of the recent change in leadership in the organization of Beaver Island Helping Hands. After 17 years of dedicated service Joyce Runberg is stepping down. Joyce was the co-founder of Helping Hands with Pat Rowley in 1995. She has served with great dedication all these years and will be missed in the leadership role, but will serve as a volunteer.

Now that Munson Home Health Care has established a certified hospice on Beaver Island the end of life care is delivered under the direction of Munson Hospice.

Helping Hands has assumed the role of helping Island residents who are not facing end of life but need assistance in other ways. Because of our isolation we often fill the gaps that other agencies miss. We offer many services including respite care for caregivers, simple tasks like running errands, reading, visiting, card playing, preparing simple meals and a variety of other services. We also have a huge loan closet of equipment and supplies. We are strictly a 'volunteer' organization and function with donated funds only.

If you feel we may be of service to you, call a contact person. Our contacts are: Sandy LoDico, 448-2004
Loretta Slater, 448-3148
Lois Williams, 448-2475

On August 17th there was a single-car "roll over" on Paid een Og's Road. The driver, Danny LaFreniere, 19, and passenger, Zack Bousquet, 14, were heading west in a 1990 Pontiac when he lost control, started to go off the road,

and rolled his car. It landed upright off the road with both inside. LaFreniere was transported by the EMS to the Welke Airport and flown via the newly-licensed EMS Air Transport. Bousquet's leg was treated at the BIRHC.

WANTED: A PRACTITIONER

A Career Opportunity for a Nurse Practitioner: A unique opportunity to live and work on a beautiful Island located 32 miles from Charlevoix, Michigan accessible by ferry and air service.

The position:

- Collaborative practice with another NP in a new beautiful health clinic
- Clinic hours, an eight hour shift, three days a week
- On-call coverage shared between the two practitioners who work together on developing schedules (minimal amount of monthly calls)
- An opportunity to know and treat patients of all ages, providing primary health care, managing chronic and acute problems and developing wellness programs
- Provide emergency services in collaboration with the EMS
- Collaborate with off-island physician on appropriateness of care
- Benefit Package
- Rural Site Qualifies for student loan repayment

The Community:

- A safe, friendly, small-town atmosphere on the largest inhabited island in the Great Lakes with a year round population of 650 and summer tourist season with thousands of visitors
- Beach walking, hiking trails, kayaking, canoeing, snowmobiling, fishing, hunting, cross-country skiing, all within your backyard!
- Drive to work in 5-15 minutes, with no traffic
- Family First atmosphere, with four churches and an excellent K-12 public school with small teacher-student ratios and strong support in the community for funding
- A nine-hole golf course where you can play without lines
- Best prices on Lake Michigan frontage in the State

Beaver Island Rural Health Center
PO Box 146, Beaver Island, MI
49782. Donna Kubic, Managing
Director (231) 448-2275
e mail donna@birhc.org



THE TAYLORCRAFT PROJECT – CODE NAME “BIG RED”

This little 1946 BC-12D Taylorcraft has been affectionately dubbed “Big Red” in honor of its previous owner, John “Red” Rowley. After seeing it tucked away in his pole barn/hangar these last 20+ years. I am excited to have the opportunity to restore this “history rich” bird to its almost original new state. I say almost because part of the restoration will entail converting the aircraft from a model BC-12D to a

model F-19. Still a Taylorcraft in every way, it will simply be a little more versatile, airy, and an even better short field operation aircraft.

The timeline for project completion is about 2 years and will require the aircraft to be completely disassembled, inspected, repaired as necessary, reassembled, and then recovered and painted in a special paint scheme to pay homage to its colorful past.

Once back in the air it will be spend

its time flying on lazy Sunday afternoons and of course giving the children of Beaver Island, both young and old, rides from the frozen surface of Lake Geneserath during Fresh Air Aviation’s “Winter Fest.”

It's a lot of work (and then some!) for such a little plane. Then why do it, you ask? Simple, I say. “Because it's Red Rowley’s airplane and it's the right thing to do!”

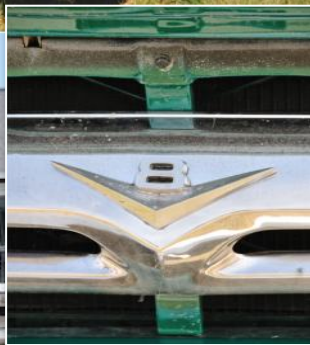
—Keith Teague





VINTAGE AUTO

The Island softball teams played hard and, most of the time, played well, but lost out to mainland teams who take the sport more seriously, practicing several times a week.





HOMECOMING

As compensation Dick McEvoy got the owners of the Island's old cars, trucks, bikes, and sleds to gather at Whiskey Point the next day, and then parade through town.





Restoring Your Investment
231.448.2336
Fully Licensed & Insured



Complete remodel of beautiful summer home on Angeline's Bluff - roof, deck, interior, exterior, from the foundation up.

SPECIALIZING IN:

- New Construction
- Residential/Light Commercial Additions
 - House Wrap/Exterior Water Management
 - Windows/Doors
 - Custom Decks
- Kitchen/Bedrooms Remodels
 - Roofs
- Seamless Gutters/Under Deck Systems
 - Water Damage Repair
 - Geothermal Systems
 - H.V.A.C and More

Owners/Operators

Preston Herren
Cell: 989.763.2342
Email: prherren23@hotmail.com
Builder License #2101182728
Lead Safety #R-1-18521-10-00888

Paul Johnson
Cell: 231.881.6076
Email: shorelinebuild@gmail.com
Builder License #210136824
H.V.A.C. License #7111566

Charlevoix State Bank

Your Hometown Community Bank

Local service you can trust on Beaver Island

Beaver Island Branch Hours September - November:

Monday - Friday

9:00 a.m. - 1:00 p.m.

5 Locations:

Main Office 547-4411
111 State St. • Charlevoix

Beaver Island 448-2190
38230 Michigan Ave. • Beaver Island

East Jordan 536-5511
100 Main St. • East Jordan

Ellsworth 588-2211
9136 Main St. • Ellsworth

Drive-up Only
102 M-66 • Charlevoix

Internet Banking . Bill Pay . Personal & Business Banking

Member
FDIC



1-800-547-6080 • charlevoixstatebank.com

Emerald Isle Hotel

www.emeraldislehotel.com



**Very Nice Rooms
with kitchens
& Apartment Suites**



**Right on the edge
of Town, the Island's**



newest Hotel

one block from the Ferry Dock

Conference Room . Free WIFI Internet access

for reservations, please call 231.448.2376



*To The Spirit of The Beaver Island Musicfest:
Peace, Love and Music in the Woods~ 10 years*

*From Dawn, the Fortune Teller/Artist~
Fare Thee On Well Howdy! – In Joy*

IT'S FASHION

A scintillating Fashion Show was held on August 16th at the Gregg Fellowship Hall. The Island Treasures Resale Shop and several local stores contributed outfits, garments, and ensembles. Pinky Harmon emceed the event. All seats were booked before the

event, with the 80+ attendees bringing a dessert or salad. Beverages and door prizes were provided.

After a meal, Pinky told her story about a naughty large blue whale while the models prepared. A dozen models strutted their stuff, applauded by an

HOWDY! ROCKS 37.

I created a Beaver named Howdy!
We took him to the Woods.
I painted him dancing,
Guitar in hand—
For all the folks in Beaver-hoods.

The Spirit of the Festival
Was painted with every stroke—
To bring Joy to the eye
of all the Friends,
These Beaver Island Folk.

Without Howdy!,
It's just some wood—
A sheet that only cost Twenty,
It celebrates 10 years in the Woods—
The hours in the Heat
Were Plenty.

The dedication waited til now,
Because Time ran astray,
Howdy! is going into Charity work—
Because He's here to stay.

Think on this and Bless your Souls—
Please be Kind,
And show some loving Care

For those less Fortunate,
Let us give more Art—
For Island Beauty
Is oh so precious and Fair!

—Dawn George

THANKS

We want to first thank Beth Ann Lucas for reporting the fire at our place on the south side of the Harbor, and then Tim McDonough, Jim Wojan, Bob Marsh, Steve Crandall, and Brandon Maudrie for their quick action. When people talk about a precision drill team, a group that knows what to do in any occasion, our Fire Department immediately comes to mind. They always know exactly what to do, and jump to it, no matter what. And they're all volunteers!

—Pat and Red Rowley

audience which took delight in seeing real people on the runway instead of fantasy-world caricatures. What made the day even better was the outfits were composed of clothes from the real world as well – which, unfortunately, had to be returned.



Ed Wojan Realty

Your Key to BEAVER ISLAND

Edward B. Wojan – Broker

26300 Back Highway

P.O. Box 86

Beaver Island, Michigan 49782

www.edwojanrealty.com



ATTENTION HUNTERS!

Ed Wojan Realty has just listed 480 acres for an estate. Three of the four parcels listed are fantastic deer hunting areas with proven harvests of nice bucks in all three areas. The three parcels are:

1. A half section - 320 acres on the south side of the Townships' Airport in Section 17.
2. 80 acres that includes Tight's Hill on the east side of King's Highway in Section 10.
3. 40 acres on the north side of Grant's Road just east of the transfer station in Section 35

1. The 320 acres has as its north line Mrs. Redding's Trail. The West Side Road runs along its east line and into the property at its southeast corner, with the old logging trail Walter's Road running from east to west through its southern half. This is flat ground, hardwoods WITH A LOT OF HUGE OAK TREES ON IT. It is being offered in one piece at \$550,000 but individuals and groups of hunters could go together to reserve pieces of it that would all close at the same time for the \$550,000 total.

2. The 80 acres at Tight's Hill is a combination of old farmland at its southwest corner behind an old barn that is near King's Highway, and behind the old homesite with the large apple trees also close to King's Highway. The interior of this 80 acres is a variety of tree covers and soil types and includes some bog area and a cedar swamp at the eastern end. Ask Ed Wojan about this parcel for a hunting camp. \$142,000 (Make an offer)

3. The 40 acres on the north side of Grant's Road is just south of an area where a number of people hunted big bucks for years (Mike Green and Robert Gillespie included). This 40 acres is set off from other properties by itself and would make a nice summer homesite or log cabin deer camp site. \$110,000.

Come by the Ed Wojan Realty office and ask for the handouts of the plat maps, soils maps, and the hi-lited areas on the Wojan-Cashman 2006 map of these three spots for hunting. Talk to Ed Wojan about the quality of the terrain for deer hunting on these three parcels.

**Real Estate Office
Toll Free Number**

**(231) 448-2711
1-800-268-2711**

*Jean's
Lawn Services*

P.O. Box 284
Beaver Island, MI 49782



- * Lawn Care
- * Clean Ups
- * Gift Certificates Available

(231) 448-2915 jlawn@tds.net



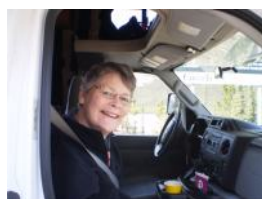
BEAVER ISLAND MUSIC FESTIVAL

WWW.BIMF.NET

DESTINATION PARADISE BAY: DELIVERING A LAND YACHT

by Larry Hansz

39.



Photographs by Larry Hansz

Maureen and I have been sailing for forty-five plus years. We have delivered sailboats and powerboats throughout the Great Lakes, the east coast, and the Bahamas. However, when Maureen said we ought to buy a motor home, we knew virtually nothing about land yachts: a.k.a. motor homes. The topic kept coming up over a period of two or three years, with Maureen ready to dive in and me being rather conservative and not wanting to spend a huge amount of money on something we knew less than nothing about. Actually, my tactic probably was to just ignore it and it will go away. No; cannot get away with that at our house.

Our son Brian threw us an interesting option: deliver a motor home for one of the rental companies during their shoulder seasons and while doing that come to visit him in Alaska. The U.S. Coast Guard transfer season is during May and June. Brian told us that several Coasties had shipped their household goods and car to Kodiak and then picked up a motor home and drove it up to Anchorage with their families for the fun of it. This was interesting.

There are at least fourteen motor home rental companies in Anchorage

and many reposition a major part of their fleet south during the winter. Many are sent to markets which remain active in the winter, such as Las Vegas, Phoenix, California, and Florida. Also, each year dozens of new rigs are picked up at the factory and driven to Anchorage, most from the Elkhart, Indiana area or Winnebago, Iowa. Most of the rental companies do not require a professional driver and allow individuals or families to deliver the rigs.



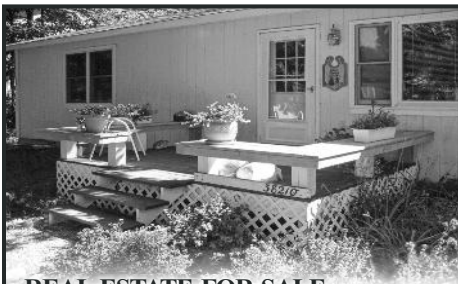
The variety of delivery arrangements are very diverse, as are the RV rigs. The RVs range from a popup trailer camper to the largest Class A rigs, which are the size of a bus. It pays to contact several companies and compare their deals. Some charge a nominal daily rate and most require you to buy the gasoline. Some are just not reasonable; one company offers a new rig to be picked up in Elkhart, Indiana and delivered to Anchorage in ten days! That is work, not at all relaxing, and allows no time to see any of the sights along the way.

The company we worked with allowed us the whole month of May to get to Anchorage; the rig had to be there to start the summer rental season June 1. The charge was \$15 per day plus gas. The summer rental for that motor home was \$125 per day, so it really is an incredible deal. The rental firms offer a similar southbound deal in the fall.

We chose to pick up a rig in Seattle and drive up through British Columbia to join the Alaska Highway at Dawson Creek and then north and west to Anchorage. It was about 2,500 miles.

When we arrived in Anchorage on May 18 the rental company said we were the second delivery of the season to arrive. That day they had about 60 units in their Anchorage fleet, but by June 1 they expected to have almost 150; most of them were to arrive with a similar delivery arrangement.

Rosemary Burget joined us for this adventure. She is still friends with us after three weeks up and down mountains and occasionally on roads from hell. As far as the conclusion regarding to buy or not to buy a motor home ... the answer is, been there, done that, and once is enough.



**REAL ESTATE FOR SALE:
2 BEDROOM, 1½ BATH FULLY
FURNISHED YEAR-ROUND HOME
ON LARGE IN-TOWN LOT!**

One block from harbor in a quiet, wooded setting yet only a short walk to swimming beaches, boat docks, fun nightlife, McDonough's, restaurants, art galleries, fresh fish, and the Toy Store. A happy house with a cheery, light-filled open floor plan. Enjoy the sunrise from the back deck, sunsets from the new front deck, and evening fires around the backyard fire pit. Fantastic storage in the full basement and spacious pole barn.

Comes with all appliances including washer and dryer, extra insulation, and a new pump and septic field. Move-in ready! Includes dishes, cookware, linens, patio furniture, and a grill...just bring your toothbrush! Ask us about the customized postal jeep and rowboat!! More photos available. Call (404) 805-5922 or email dmsweet2@bellsouth.net

FOR SALE by Owner - 26189 Back Hwy. (Emerald Isles Gallery), 3600sf building on a 62'x280' lot, one block from ferry dock. Building front half concrete block construction, concrete floor; back half frame construction, 1800sf professionally installed Island ash (tongue/groove) floor for skating rink; fully insulated; 10ft. ceilings; recent improvements include: new roof, septic field, well, remodeled full bath. Propane lines connected, electric heat and Energy King wood burner.

Bldg. will accommodate a six-lane bowling alley, restaurant, apartments and/or year round residence. 150'x62' vacant property in rear can accommodate parking and/or expansion of building. Pond and view of Paradise Bay. \$195,000 Contact Karl Heller, (231) 448-2844

**Long Term Storage
Summer & Winter by the
Month, Season, or Year/sq ft**

Boats & Water Craft
Snowmobiles
Recreational Vehicles
Building Materials
Household Goods, etc



SAFE, INSIDE & DRY
Reserve your space now

2 miles from town on Kings Hwy
Call 231-547-2393

40.

IRON MEN

All the Michigan Artsmith demonstrators had a wonderful time talking to people about their work at the Heritage Park during Museum Week, and then again at the Community Center in the evening. And, of course, they loved being on Beaver Island – some for the first time.

Having sponsors was great...it eliminated another cost and provided a bond

with folks on the Island. The sponsors went all out and I'm sure there were some long lasting friendships made.

Most of the follow-up comments I received from the Artsmiths were positive. As expected, transportation cost was the main issue. Shipping equipment over (rather than leaving it in their trucks) was not viewed as something anyone wanted to do. We develop a personal

REAL ESTATE, FOR SALE

WATERFRONT HOME FOR SALE
3 BR, 1¾ bath, at Sand Bay. Sandy beach, 2 lots: 1 w/ recently remodeled home and garage, 1 w/ large pole barn. Just appraised at \$285k. Call (231) 448-2034.
TWO LOTS IN THE PORT ST. JAMES - NEAR FONT LAKE.
Perked, wooded, buildable. #708 & 709; electric and phone right there. \$14,000 each. Call Peggy at (269) 671-5557.

PORT ST. JAMES LOTS 607 AND 608 - A block from the Font Lake boat launch. (231) 675-2514.
LOTS 644 AND 645 PORT OF ST. JAMES - Nice corner lots. \$19,000 for both. (231) 448-3088.
FOR SALE, 11 ACRES ON EAST SIDE DRIVE - good land, 357' on road, 1373' deep; \$28,900. Phone (231) 448-2545.

REAL ESTATE, FOR RENT

THE FISHERMAN'S HOUSE - Great 'In-Town' location across the street from St. James Harbor. Four bedrooms, three with double beds and one with twin beds, two bathrooms, bed linens and bath towels provided, fully equipped modern kitchen, washer/dryer, TV, enclosed porch, and open deck with grill. For availability, call Bill or Tammy (231) 448-2499 or (231) 448-2733 or tammymcd107@yahoo.com.

A GREAT HARBOR VIEW - from a great "in-town" trailer. Perfect for a couple of working people. 2 bedroom, 1 bath. Furnished and fully equipped kitchen. \$1500 a month. Please call (231) 448-2235.

COTTAGE ON BEAUTIFUL FOX LAKE - One bedroom, one bathroom, full kitchen, laundry with bunkhouse. Cottage sleeps six and is 20 minutes from town. Dock, rowboat and deck overlooking the lake. \$700/week. No smoking and no pets please. Contact Sue at cabinbythelake1@gmail.com

LOCH WOOD SHORES - About four miles from town on the beach of Sand Bay. 3 bedrooms, 2 with double beds, 1 with two twin beds, one and a half bath, w/d, full kitchen, gas grill, large deck that you step off onto the beach, gas fireplace, and a gorgeous view of Lake Michigan. Call (231) 448-2733 or 448-2499.



A BLOCK FROM TOWN, A BLOCK FROM THE BEACH: 3 BRs, 1 bath; wireless; \$625/week; call (231) 313-6225 or email abbieswest@yahoo.com
www.abbieswestcottage.com



GREAT LOCATION IN TOWN
and perfect view of the Harbor overlooking Veteran's park. Sleeps 8 - 10 with 2 full baths. Full kitchen, washer/dryer, many amenities. \$900 a week. Call for more info or pictures.
(231) 448-3038

relationship with our tools, and they cannot simply be replaced.

Another frequent comment was that they would prefer to demonstrate for two or possibly even three days. The main concern was that they did not want to have their equipment unguarded during the evening and they had too much stuff to move it into the barn each night.... Providing a guard for one or two evenings

would be yet another expense...but necessary for their peace of mind. Perhaps a tent could be set up, and straws drawn.

We thank the Historical Society for allowing us to use Heritage Park and providing a porta-jon. Thanks to Gene for the water and the tours of his lovely gardens. Also thanks for the electric from the Montage.

Most want to come back next year.

—Lance Olson

DEEP WATER HARBOR FRONTAGE FOR SALE - 66.5' Harbor Frontage; Deep Water; Space for four 45'+ Boat Slips; Main Street Frontage; 1570 Sq. Ft. Building with Commercial/Residential Use; City Sewer; Option to Purchase Adjacent Parcels; \$399,000. For Further Information Please Contact Jon Bonadeo at (231) 448-2489 or (231) 459-6861.

HAGGARD'S SUMMER RENTAL HOME - Overlooks Paradise Bay across from the Maritime Museum. Sunset view of harbor and village of St. James is a winner. Comfortable custom home sleeps 8-10. 3 baths. Public sand beach close by. Well mannered pets welcome. Only \$1,200 per week. Call (231) 547-4046 (day) (231) 547-6600 (evening) or email samhunt59@yahoo.com

WATERFRONT COTTAGE - On the east side. Available by the week or weekend. One BR, full kitchen and bath. Enjoy the water and the woods, year round. Off-season rates. Complete privacy. (231) 448-2907.

DONEGAL BAY - 3 BR 2 bath Home; sleeps 6; many amenities. \$980 a week. Reduced rates for off-season. Phone (313) 885-7393, after 4:00 p.m.

DONEGAL BAY COTTAGE - Nicely furnished 3 BR, 1 bath, washer/dryer. On dune w/ beach access. \$775/ July & August \$600 off-season weekly. Dana Luscombe (248) 549-2701 eve or dana.luscombe@gmail.com

WEEKLY RENTAL - Lakefront. "The Last Resort" 2 BR house on Sand Bay, great view, beautiful sunrise, laundry pair, 1 1/2 bath. Phone Bill McDonough at (231) 448-2733 (days).

SAND BAY - "BAY HAVEN" COTTAGE - WEEKLY RENTAL - Lake Front, Sandy Beach, 5 br, great view, laundry. East Side Dr.—only four miles from town. Awesome sunrises — walk to beach is straight and flat out the lower

20 ACRES WEST SIDE ROAD - \$55,000; 16x18 rustic cabin. Apple orchard and deer blinds; (248) 766-4205.
10 ACRES OLD FOX LAKE ROAD Beautiful, wooded, great building site; \$39,000. (231) 409-1214.

2 LOTS ON SAND BAY - 3.3 Acres each. 1700' deep. Sandy Beach Frontage 117' each. (810) 629-7680 or (231) 448-2257.

level. No pets and no smoking. Please call Laurie Bos at (616) 786-3863 or lauriesbos@chartermi.net Photographs of Bay Haven can be seen at: www.bayhaven.beaverisland.net

HOUSE AND CABIN NEAR INDIAN POINT - Enjoy fine country living. A 2-BR, 2-Bath home @ \$650/month and a beautiful studio in a second bldg @ \$450/mo: phone (231) 448-2575.

A HOUSE RENTAL - Cute 2 bdrm house in woods near town, public beaches, and bike path. Screened porch. Washer, dryer. No pets, no smoking. \$595/week. Call (231) 871-0477.

Beaver Island Rental Cottages continued on page 42.



ON THE HARBOR: Furnished upstairs apartment overlooking beautiful Paradise Bay. 1 bedroom, 1 bath, fully equipped kitchen. Porch and deck area on the harbor with possible dock slip. \$800 a week. Please call (231) 448-2235 for reservations or more details.



SAND BAY COTTAGE - ON THE LAKE WITH GREAT BEACH-FRONT: Sleeps 6. Two bedrooms and loft, 1 bath. Modern kitchen, fireplace, washer/dryer, grill. Deck and screened-in gazebo. No pets, no smoking. \$800/week. Call Sue on (231) 448-2670 or cabinbythelake1@gmail.com



COMBS COTTAGE ON SAND BAY:

Charming beachfront cabin nestled in the woods 50 yards from the water, 4 bedrooms, 2 baths, full kitchen, washer/ dryer, queen beds in 3 rooms with two sets of xl-bunks in the 4th. Satellite TV. Perfect for families. \$900.

Security deposit. Available June-Sept. Website: www.combscottage.webs.com email: combscottage@ymail.com; or call Nancy at (719) 599-3147



The Convent
in the Village
Beautiful Harbor View
Sleeps 15 - 7 Bedrooms w/ sinks
Fully-equipped Kitchen
Beach Access
Great for Multi-Family Groups,
Family Reunions, Business Retreats
Open Year Round. Weekly Rental,
Saturday-Saturday, in season
3-night minimum off-season
Call 448-2206
(Pam O'Brien)



HARBOR LIGHTS: Unique log home looking out over Paradise Bay. Beautiful views of St. James Harbor, Garden, and Hog Islands. Enjoy the boats from the huge deck, or sit around the fire pit on the beach. Very secluded, sitting among lush cedars and pines. 3 bedrooms with 2 queens and 2 twins. One large bathroom and one half bath. All the amenities you could ever need. Immaculate home with "spectacular" views. \$1,150 a week. Home (630) 834-4181 Cell (630) 995-0507 harborlightsbim@aol.com



WATERFRONT HARBOR HOUSE FOR RENT:

Spectacular view of Paradise Bay! Large home with all the amenities, linens provided. 4 bedroom, 2½ baths, sleeps 8, washer/dryer, fully equipped kitchen, satellite tv. June – Sept. \$1250 a week. Short walk to the Stoney Acre Grill. Please call (231) 448-2235



FOR RENT MAIN ST. 3300 SQ. FT: 5 Bedrooms. 3 Baths. In-Town. ½ block from ferry - Across from yacht dock. 1 block from public beach. Responsible parties only. Reasonable. Call for info, Kathleen Wood, (231) 448-2311 Home (231) 598-1119 Cell.



NORTH SHORE 300' BEACH

FRONT: Newly remodeled Sunset Cabin overlooking Garden Island. Charming cabin with 3 season porch has Queen, Full/Twin bunk-bed and sleeper sofa. Located on Pine Street, easy walk to town. \$1,000. a week June through September. No pets please. Call (231) 448-2050 for more info.

7 PINES - Weekly Rental. Close to town (short walk to Dalwhinnie) Sleeps 6, 1½ bath, washer/dryer, linens not furnished, freshly remodeled, *DOG friendly*, \$850/week. Contact Gretchen Fogg at (616) 318-1424 or gabf24@gmail.com



ALLEN HARBOR-LAKE FRONT:

One block W. of marina. Sharp 3 bedroom, 3 bath, washer/dryer. Sleeps 8. Awesome view of harbor from living room, kitchen/dining room, and master bedroom. \$1,500/week. Call Patti Fogg (616) 399-5067 pfogg@charter.net or www.allenfoggcottages.com



SHORTY'S PLACE:

In town with a beautiful view of the harbor and our beach lot across the street. 3 bedroom, 2 bath, sleeps 6. Dalwhinnie and McDonough's within walking distance. \$1,200 per week. Call Patti Fogg: (616) 399-5067 pfogg@charter.net Website: www.allenfoggcottages.com



SECLUDED 1940s LOG CABIN - just one block from lake and market on one acre - Sleeps 4-6, pets welcome (\$100 deposit.) Washer, Dryer & linens furnished. Bicycles, canoe, grill available \$700/wk; weekends available. (219) 863-2655 or email cehlah@urhere.net



JUDE'S RENTALS: Pleasantly situated in the heart of it all! Jude's house is nestled among the peaceful nature of Beaver Island in addition to being just walking distance from the harbor, historical museums, shops, restaurants and the beach. Call Jude Martin (231) 448-2673 or (616) 726-2432

Beacon Subscription: ☐ New ☐ Renewal ☐ Gift

Name _____

Address _____

City _____ State _____ Zip _____



☐ \$30.00 / Year (Standard Rate Mail)

☐ \$45.00 / Year (First Class Mail)

If you would like a gift card sent:

A Gift From _____

Message _____

Please Mail to: The Beaver Beacon . Box 254, Beaver Island, MI 49782



SECLUDED BEAUTIFUL CHALET FOR RENT: 10 Acres of pine with 360' of sandy Lake Michigan Beach. 2-BR (including loft), one bath, Great Room with 2 sofa sleepers. Fabulous views of the Lake. Large decks. Sleeps 7. Across from state land and hiking trails. Satellite TV. No smoking. Dogs allowed. \$700 per week. Call Ed Eicher (810) 629-7680



LAKEFRONT: 2 bedrooms, 2 baths + large lower level with sleeping for 6. Sleeps 12 total. Washer/dryer, bikes, kayaks, wrap-around porch, views of sunset & Garden & Squaw Islands. \$1400/week. (773) 663-7772. Website: www.LinnsLakeLodge.com



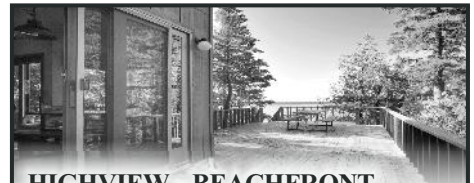
ISLAND AERIE: Overlooking harbor next to Nature Preserve, easy walk/bike to town, 3 bath, 4 BR; sleeps 12 w/ 2 king and 10 twin beds, large 1st floor decks, 2nd floor wet bar and deck, 3rd floor game room, all modern amenities and appliances, great for multiple families and groups. \$1800/wk, reduced off-season and extended-stay rates. Call John and Jan (989) 560-8639 www.islandaerie.net. Jan@islandaerie.net



BEAUTIFUL WOODED LOT ON DONEGAL BAY: conv to beaches, hardwood floors, & cathedral ceilings. This chalet-style cottage is new, bright and airy with a large front room and cathedral ceiling, lots of windows, and double sliding glass doors. Convenient access to the best beach on the island. Only \$725/week. Off-season \$475. Call (517) 927-2374 nprawat@yahoo.com



DONEGAL BAY COTTAGE: 3 BR, 2 BA, full kitchen, W/D, fireplace, secluded patio & deck surrounded by pines and bluff and overlooking one of Beaver Island's best beaches. \$850 per week June-September; winter rates available. Call (734) 996-3973 or loonlookout@comcast.net home.comcast.net/~loonlookout/site/



HIGHVIEW - BEACHFRONT HOUSE FOR RENT: Exciting cottage with view of High Island from large deck. Open floor plan, huge windows on extremely private beach. 2 BRs with 2 full beds + loft with 2 twins. 1½ baths, TV/VCR, W/D, microwave, gas grill, all amenities. \$1200/week; spring & fall \$895. Limit 6 people. Now with wireless! Call (941) 921-2233 or (317) 769-6563 Photos at highview.beaverisland.net



FOR RENT YEAR AROUND - 950 sf 2 Bedroom, 1 Bath, Furnished House, Washer Dryer, elect/propane heat, deck. 1st House north of Medical Center, 37362 King's Highway. \$500.00 month. Looking for long term lease. (303) 287-2212.

SAND BAY - sleeps 8—amenities— available May- September \$950.00 wk plus security deposit. (231) 582-5057 or email robin@robinleeberry.com
LOG CABIN ON SAND BAY - pets allowed. 2 BR, 1 bath: \$500. Call (734) 449-0804 or email dlelzey@gmail.com

Life in the Beaver Island Archipelago

The new 208-page full color hardcover Beaver Island Book



Name _____

Address _____

City _____ State _____ Zip _____

_____ Number of books \$35.00 per hardcover book,

including shipping

If you would like a gift card sent:

A Gift From _____

Message _____

Please Mail to: Paradise Bay Press . Box 52, Beaver Island, MI 49782



BIRCH HOUSE ON FONT LAKE:

Close to town and Donegal Bay, 3 bedrooms, 1 bath, fully furnished home. \$900.00/week. (630) 750-7870 lhmrinc@aol.com



BEAVER ISLAND SEPTEMBER 2012



P.O. Box 254
Beaver Island, MI 49782

www.beaverbeacon.com

ADDRESS SERVICE REQUESTED

STANDARD RATE
US POSTAGE PAID
BEAVER ISLAND, MI
49782
PERMIT NO. 3