



January 2012 \$2.75

# Beaver Beacon

The Island Monthly Since 1955

BRANCHES OF THE FAMILY TREE





## *Dalwhinnie* The meeting place

Full breakfast, fresh baked breads, donuts, pastries, cakes, lunch with such specialty sandwiches as our famous portobelo mushroom sandwich, fresh ground beef burgers, pizza, cappuccino, fresh salads, and gourmet kitchen items and cookbooks! A great place to meet friends! (231) 448-2736.

# Happy New Year from all of us at **McDonough's Market, Inc.** Since 1933 On America's "Emerald Isle"

38240 Michigan Avenue  
Beaver Island, MI 49782  
(231) 448-2733

Full line of groceries. Custom-cut meat.  
Fresh produce, Beer, Wine, Liquor.  
A large selection of specialty foods. Block & cube ice.  
Movie rentals. Post cards. Beaver Island  
clothing and gifts. Small & major appliances.  
Greeting cards. Notary service. Michigan lottery.  
Fax, Money orders & transfers, Island maps.

[www.mcdonoughsmarket.com](http://www.mcdonoughsmarket.com)



## **CARY CONCRETE LTD**

**GREG CARY - OWNER LICENSED BUILDER**

- |   |                       |  |
|---|-----------------------|--|
| • Automated<br>Batch Plant                        | • Driveways           | • Basements                                    |
| • Redi-Mix<br>& Insulated<br>Foam Poured<br>Walls | • Sidewalks           | • Fireplaces                                   |
|   | • Concrete<br>Pouring | • Unlimited<br>Masonry<br>& Cement<br>Supplies |
|   | • Garages             |  |

CALL NOW

**FOR A FREE ESTIMATE**  
**231.448.2242**

CARY CONCRETE LTD . 36520 KINGS HWY . BEAVER ISLAND, MI . 49782

## **SCHWARTZFISHER** **STONeworks**

*Quality Work Done on Time*

### **EXCAVATION**

- Site Clearing
- Driveways
- Basements
- Septic Systems
- Pump Back Systems
- Screened Top Soil

### **MASONRY**

- Block Work
- Flat Work
- Rock Retaining Walls
- Chimneys
- Stone Work
- Fieldstone Courtyards

### **WELDING**

- Mig
- Tig
- Aluminum
- Stainless Steel
- Plasma Cutter
- Steel Fabrication

DAVID SCHWARTZFISHER, OWNER  
27540 BARNEY'S LAKE ROAD, BEAVER ISLAND MI 49782

**(231) 448-2706 OR 448-2102**

# contents

JANUARY 2012



News from the Townships .....	4.
The Recreation Survey and Draft Recreation Plan .....	6.
Lighthouse School Grads .....	10.
The Cantata Turns 11 .....	12.
PABI follows through with a special Christmas Delivery .....	14.
On This Date .....	16.
Working on the Railroad .....	20.
A Drum for the Island .....	24.
One Hundred Years Ago .....	26.
A vibrant School .....	28.
Let's Facilitate .....	36.

## Beaver Beacon

the Island Monthly since 1955

*published by*

Paradise Bay Press

Beaver Beacon

Box 254, Beaver Island, MI 49782

(231) 448-2476

[www.beaverbeacon.com](http://www.beaverbeacon.com)

*editors/owners*

Jeff Cashman

[jcashman@beaverisland.net](mailto:jcashman@beaverisland.net)

William Cashman

[wcashman@beaverisland.net](mailto:wcashman@beaverisland.net)

*contributors*

Joyce Bartels

Judy Boyle

Jean Kinsley

Anne Fleming

Jon Fogg

Antje Price

Marc Tenser

The "Head," home site for "Escape from the Rock"

The basin of the Good Life



*The Beacon welcomes Island Stories, Articles, Photos, and Letters to the Editor. Thanks to all who call & email with news!*



## ROBERT'S JOHN SERVICE, INC.

**Doing Quality Work  
for over 18 Years**



### Licensed and Insured

- ✓ Plumbing
- ✓ Heating
  - Radiant In-floor Heat / Hydronic
  - Forced Air
  - Geothermal
- ✓ Water-right / Water Conditioning
- ✓ House Opening / Closing
- ✓ Vac-u-flo / Central Vacuum Systems
- ✓ Great Lakes Hot Tubs dealer — sales and service. Please call for a quote.



**ROBERT'S JOHN SERVICE, INC.**

**(231) 448-2805**

## BURRIS MASONRY

BRICK, STONE, AND BLOCK;  
THAT'S HOW WE ROCK.  
(231) 448-2213.

## MacEachmharcigh Construction



*when you want to deal with  
someone you can trust, there's*

**Dan McCafferty**

license # 2101179333  
26275 McCafferty Lane

**231-448-2238** dansarahoct9@tds.net

*"A lifetime in construction has taught me the value of  
honesty, communication, and dedication to craftsmanship."*

## R. Gillespie Enterprises

P.O. BOX 217 • BEAVER ISLAND MI 49782

**231-448-2577**

Excavating \* Road Building  
Contracting \* Licensed Builder

**WWW.GILLESPIEENTERPRISES.COM**

Live harbor webcam at [www.BeaverIslandRealty.com](http://www.BeaverIslandRealty.com)

## 4. NEWS FROM THE TOWNSHIPS

### St. James Township

A letter from the Charlevoix County Community Foundation announced that a grant of \$4,269 had been awarded to St. James for the preservation of the Whiskey Point Light, thanks to Don Vyse's efforts.

A sample lease agreement for the St. James tower was submitted, but it contained a 30-year provision, which had already been said to be unacceptable. The equipment to be mounted had been ordered, though, and 9-11 service would be greatly enhanced as soon as proper lease language could be derived — including assurance that the equipment would not interfere with a future provision for cell-phone use.

It was announced that 262 people had responded to the Recreation Plan survey, and soon their input would be organized and presented to the public.

Two requests for grant support (with no matching Township funds) were presented by an NRESC representative. One was for the Conservation Resource Alliance's (CRA) request for \$150,000 to develop a management plan for Iron Ore Creek, provide for upland bird habitat work, and conduct some research on invasive aquatic and

terrestrial plants. The Little Traverse Conservancy had agreed to allow the CRA to use some of its recent purchases of preserves as the match required by the granting agencies.

The other was for the Nature Conservancy (TNC) to send a 3- or 4-person team to the Island for two months next summer to walk the land, both on Beaver and the outer islands, and do an in-depth plant inventory and some treatment of invasives. All examinations of private land would only be made after permission is granted by the landowner; NRESC will help coordinate the effort to obtain this. The NC requested that an effort be made to help find lodging for the team next June and July. The East Side Fire Hall was thought to be a possibility, but it had been promised to the second deputy.

Both requests were unanimously approved.

Two dates were suggested for a joint Township meeting with Michael Slattery, the consultant advising the Island about having its Air Ambulance approved, January 4<sup>th</sup> or the 23<sup>rd</sup>.

The Board was invited to attend the NRESC meeting with the MSU facilitators.



*Oak Woods*  
**LODGE**

*formerly Laurain Lodge*

- ◆ Fine accommodations known for hospitality, quality, comfort and convenience for business or pleasure.
- ◆ Fully furnished housekeeping units with TV  
1 or 2-Bedrooms; king, queen, twin beds available
- ◆ Grand deck, grills, separate children's play area, campfire.
- ◆ 12-Ft. aluminum rowboats on inland lakes for fishing, sightseeing (included with each room)
- ◆ Fresh, spacious rooms, pleasant gardens, wooded views.

Relax. Let the hospitality at Laurain Lodge help you enjoy Beaver Island. It's why so many return year after year.

Visit our website to see pictures: [www.OakWoodsLodge.com](http://www.OakWoodsLodge.com)

Call today for reservations or information on island activities

**Phone (231) 448-2099**

38085 Beaver Lodge Drive, Beaver Island, MI 49782

Your Hosts, Larry & Theresa Laurain

Beautiful setting

Within a short  
walk to:

Shopping  
Dining  
Public beach  
Playground  
Hiking  
Museums  
Tennis courts  
Library

Daily morning  
coffee & donuts



### Peaine Township

Early in the December meeting a synopsis and update of the Airport lawsuit was presented. The bill for the 150 acres acquired from the Albins had been calculated at \$1,086,000, including court costs, attorney fees, and interest—which continues to run at ~\$100/day; this amount did not include the \$191,000 already paid.

The FAA approved the settlement, and said Beaver Island was eligible to receive up to \$1,200,000 in funding to settle the matter. The two Townships would have to provide a 5% match.

There was an offer from the Albins to not request repayment of property taxes they paid after the date on which the court decided the property had been taken, if the Townships agreed not to appeal the verdict. The supervisor wanted this matter settled, but when resistance was expressed he said he would press for a quick joint township meeting in which to make this decision.

Some of the facts in the judgement:

The land value was \$693,000; the amount previously paid was \$191,000, leaving a difference of \$502,000.

The additional interest from 8/18/03 to 12/31/11 was \$292,910.69;

the Albins' attorney fees were \$264,970.23; and court costs were \$26,111.69, bringing the total judgment to \$1,276,992.61.

The 9-11 upgrade may involve the agency gaining title to the South End tower, if no other interested parties appear. A decision might be reached by January 14.

An NRESC representative asked Peaine to support the request for two grants, one for the CRA and the other for TNC, and it did – matching the action of St. James. An effort was underway to locate alternative housing for the second deputy. A report was also made on the NRESC/MSU meeting, which was said to be very productive. A proposal was expected back from MSU outlining a sequence of next steps.

There was a brief discussion of whether or not Peaine should pay to upgrade the substation once the property swap (for Whiskey Island) goes through.

Angel Welke made an exciting announcement: Island Airways met with an FAA team and will likely be certified as an air ambulance provider by February. And thanks to the efforts of Howard Walker

*continued on page 6.*

## Beaver Island Financial Center

*Providing local  
service to Beaver  
Island*

*Property & casualty  
insurance for your home,  
auto, boat & business*

*Fixed-rate real estate  
mortgage  
loans*

Office opening soon in the lower level of the Ed Wojan Realty office  
P.O. Box 117 — 26300 Back Highway  
Beaver Island MI 49782

Call Bill Kohls at 231.448.2150 — [bifo@tds.net](mailto:bifo@tds.net)



*Your Port of Call on  
America's Emerald Isle*

**Deluxe Motel Units  
and Two bedroom Condominiums  
with Full Kitchens.  
Located next to the Boat  
and Ferry Docks.  
Overnight or Weekly  
Swimming Pool, TV**

**For Reservations Contact:  
Harbor View Motel  
P.O. Box 104 Beaver Island, MI 49782  
(231) 448-2201  
[harborview@tds.net](mailto:harborview@tds.net)**



[WWW.HARBORVIEWBEAVERISLAND.COM](http://WWW.HARBORVIEWBEAVERISLAND.COM)



- ✓ Licensed and Insured  
Island-based Business
- ✓ Quality, Efficient, and  
Professional Service
- ✓ Electrical, Voice & Data
- ✓ Residential & Commercial
- ✓ Plus, we're nice!

**231-448-2093**



6. *News from the Townships*, from page 5.  
and Greg McMaster, a special bill was about to be passed in which the insurance coverage (after having started at \$1m, being raised to \$2m in 1998, and becoming \$10,000,000 in 2004) would be rolled back to \$2,000,000 – as long as evacuations are below 52/year (currently they are around 40).

The Emergency Authority was approved and filed in 2002, but never empaneled. The Clerk was asked to research the reasons for its creation, while the supervisor investigates the expectations of the Rural Development Corporation, which financed the East Side Fire Hall, to see if the Authority is still necessary. If so, some decisions will have to be

made about exactly who owns the various facilities and pieces of equipment.

The zoning ordinance will have to be changed to reflect the use of the new hangars at the Welke Airport – to allow for temporary living quarters for pilots and airplane mechanics.

The possible combining of the EMS with the BIRHC (and perhaps the

## THE RECREATION SURVEY

**T**he 262 people, almost half men, who recently completed St. James Township's Recreation Survey indicated their preferences for new activities on the Island.

The top-ranked items for planning purposes were:

- Continue to expand and develop an invasive species program;
- Expand the number of walking/hiking trails and connect them;
- Increase and connect bike paths around the Island;
- Do more to preserve natural areas to enhance ecotourism

opportunities;

- Develop more recreational services for teens and children;
- Do more to support eco-friendly "silent sports";
- Do more to promote tourism in the fall and winter;
- Help create a fitness center with exercise and strength equipment and room for classes;
- Develop more outdoor winter recreational opportunities;
- Develop more recreational/ecotourism opportunities on the other islands of the Beaver Archipelago, while providing maximum protection for their

natural areas; and

- Create a public boat launch at St James Harbor.

The top needs, as identified by 102 respondents, were Bike Paths (24), an Indoor Swimming Pool (22), a Fitness Center (18), Walking/hiking Trails (16), and a Boat Launch (13).

Choices were reflected by the respondent's age. The 89 respondents 60 years and older gave higher importance to "Improve signage and other ways to direct people to recreational sites and describe natural features."

The 46 respondents 18 years and under gave higher importance to:

- Help create an indoor swimming



# *Happy New Year* *from all of us at* *Island Airways*



*With our friendly staff and our history of safe, comfortable, and competitively priced flights, we're ready to serve all your aviation needs. We offer Charter flights to a multitude of locations in the United States, as well as freight and passenger services to Beaver Island and Charlevoix. For more than 60 years we have been both Charlevoix and Beaver Island's committed aviation service provider. At Island Airways, you are more than just a passenger, you are a part of our family. Our airport services include maintenance, free wireless internet, rental cars, and much more.*

**1-800-524-6895** [www.IslandAirways.com](http://www.IslandAirways.com)



BIFD) was put on hold at the request of the EMS.

### The Appeal

The Peaine Board voted to have a joint meeting with both townships, but St. James felt it was unnecessary. The attorney representing the airport and the townships, Robert Buchanan of Grand

Rapids, said there was only one possible issue to appeal – that the judge should have allowed the jury to hear of the price the Albins paid for part of the taken property. But the law gives the judge broad discretion in this, and the attorney believed such an appeal would fail.

So on 12-21 the Peaine Board met briefly and agreed with St. James, that

no appeal should be lodged. Thus the legal matter will be closed. The FAA determined that the judgement is program eligible, and MDOT will write the grant as soon as the judgement is entered.

This property, all 150 acres, will now become a permanent part of the airport holdings, and can never be sold.

pool;

- Help create a fitness center;
- Develop more outdoor winter recreational opportunities; and
- Support development of an indoor sports facility.

Copies of the survey and the draft plan derived from it are available at the Beaver Island Library, or can be downloaded online. The report includes several charts and graphs to allow readers to see the survey results from a variety of perspectives, and gauge the popularity of their own sense of what is needed.

The process now will involve a month of public comments on the draft

plan released January 2<sup>nd</sup>, followed by a February presentation to the St. James Town Board for its response.

After the plan is modified and approved it will join the Master Plan as one of the official documents guiding our continuing development – along with a comparable but probably more complex recreation plan for Peaine Township – more complex because the land covered is so much larger.

Then things will get interesting. These plans will state goals for improving life on the Island, but the goals won't just happen. General wishes have to be translated into detailed plans and engineering drawings. Many will

require a great deal of money – a swimming pool, a fitness center, or a grand network of walking and biking trails, for example. We'll have to estimate just how much, and where it might be found.

Some funds might be “out there” in the form of grants, but someone has to locate them and go after them. Someone has to set “practical priorities” – which does it make the most sense to go after first? Which do we need most? Which are we most likely to obtain? Then someone has to oversee their implementation. Nobody has said anything yet, but we may need to form a task force or a commission.



Commercial & Residential Construction  
specializing in custom wood homes  
Remodeling ■ Roofs ■ Decks

**Ernest Martin**  
**Beaver Island Office**

Phone 231-448-2074 ■ Fax 231-448-2047

email: [kmcontractorsllc@gmail.com](mailto:kmcontractorsllc@gmail.com)  
web: [www.kmcontractors.net](http://www.kmcontractors.net)

## BEAVER ISLAND COMMUNITY CENTER

*At the Heart of a Good Community*

Winter Hours  
Monday-Friday 9:30am - 6pm  
Saturday 9:30am - 9pm . Closed Sunday



phone: 231-448-2022  
email: [bicommunitycenter@tds.net](mailto:bicommunitycenter@tds.net)  
web: [www.beaverislandcommunitycenter.org](http://www.beaverislandcommunitycenter.org)

Check out upcoming Events, Movies & Activities at [www.beaverislandcommunitycenter.org](http://www.beaverislandcommunitycenter.org)

Get Ready for The *Beaver Island Ice Classic...*  
as soon as we have ice, guessing begins for when we  
will have spring! Get your guess in, and win!

“Icetimations” tickets now available at the community center.

**The Beaver Island Community Center wishes you  
and yours a HAPPY, HEALTHY NEW YEAR!**

*Special thanks to everyone for  
supporting the community center!*

### MOVIES:

Saturday DOUBLE FEATURES! 3 pm & 7 pm

\*(Check the Community Center for updated listings, and times!)

Check out upcoming movies, events and activities!

**[www.BeaverIslandCommunityCenter.org](http://www.BeaverIslandCommunityCenter.org)**



Second-year Sponsor

Special thanks to our sponsors  
and supporters:  
Shamrock Bar & Restaurant,  
Beaver Island Boat Company,  
Brothers' Place, Dalwhinnie Bakery  
& Deli and Hogarth's Pest Control!



Business supporter



## 8. DRAFT RECREATION PLAN FOR PUBLIC COMMENT

In addition to its reflection of a broad range of views about our recreation desires and opportunities, the full draft report contains much interesting material, from the overview statistical perspective and the current recreation budget to the plan's action programs.

"According to the 2010 U.S. Census, the St. James Township population profile continued a 20-30 year trend of slow growth and aging. The township had 365 residents, almost evenly divided between men and women.... In 2010, about 17% of township residents were 18 years old or younger, while about 31% were 60 years old or older."

"A similar trend of slow growth is seen in the 2010 Census profile of housing in St. James Township. Ten years earlier, the township had 179 seasonal housing units (those occupied during limited portions of the year) and 138 occupied (year-around) housing units. Using this data, and a multiplier of 3-5 people per seasonal home, the 2006 Master Plan estimated that the seasonal population in

St. James Township was between 537-895 people, more than double the year-round population. In 2010 there were 238 seasonal housing units and 178 occupied (year around) housing units, an increase of nearly 40% during the decade."

"The current St. James Township budget (April 2011-March 2012) allocates a total of \$29,600 for parks and recreation. This is about 12% of projected revenue for the year. Detailed projected expenditures:

- Ballpark maintenance: \$1,250
- Public beach maintenance and equipment: \$4,200
- Landscape maintenance: \$3,250
- Lawn mowing: \$2,750
- Public restrooms maintenance/upgrade: \$3,750
- Tennis courts: \$500
- Campground maintenance: \$1,500
- Gull Harbor maintenance: \$1,500
- Pest control: \$250
- Lighthouse restoration: \$6,000
- Utilities: \$3,400
- Township properties expense: \$1,250"

The Draft Recreation Plan defines the following "Action Programs":

- 1.) Combat Invasive Species;
- 2.) Develop a Community Fitness Center;
- 3.) Expand and Connect Island-Wide Hiking & Biking Trail System;
- 4.) Increase and Coordinate Natural & Historical Site Signage;
- 5.) Create a new Public Boat Launch Site at St. James Harbor;
- 6.) Increase Ecotourism Momentum;
- 7.) Combat St. James Campground Shoreline Erosion / Observation Deck;
- 8.) Improve Access to Recreational Opportunities for Residents and Visitors with Special Needs; and
- 9.) Conduct Market Research for a Great Lakes Islands Nature Center in St. James Village.

The full draft Recreation Plan is linked from the *Beacon* website, or the report is available at the Beaver Island Library. It will be considered at the February St. James Township meeting.



*We are more than just a laundromat and carwash!*  
We store boats, cars, campers, household items,  
construction materials...

**YOU NAME IT, WE CAN STORE IT!**

We have affordable month to month rates,  
9 month rates, or yearly rates.  
Hurry, space is limited!

Call us for more info at 448-2235 or 448-2050

**WENDY S. WHITE, D.D.S.**  
**BEAVER ISLAND FAMILY DENTISTRY**



P.O. Box 218  
37304 King's Highway  
Beaver Island, MI 49782  
(231) 448-2100  
Hours By Appointment

**VAN & GEO RENTAL**  
**PICK UP AT BOAT OR PLANE**



Multi-Day Discounts  
4 HR. Rates available

**Call: 448-2300**

**BEAVER ISLAND MARINA**

E-MAIL: Pat@BeaverIslandMarina.com



## PROTECTION – PIECE BY PIECE

9.

Last month the *Beacon* mentioned the new George and Althea Petritz Nature Preserve on the Island's north shore – an important piece in the development of recreation opportunities in St. James. Here's a little more information about how it came about.

In 2005, John Woollam started a vision of Land Protection for a beautiful corner of Beaver Island. With the purchase of 13 acres, he set in play a series of five more purchases over the next four years which resulted in the protection of a total of 27 acres and 500 feet of Lake Michigan shoreline.

In the spring of 2011, Woollam worked with the Little Traverse Conservancy to place a conservation easement over the entire acreage, protecting it from all future development. And just this fall, Woollam donated the land to the Conservancy as the George and Althea Petritz Nature Preserve.

"The protection of this spectacular land was due to John's singular commitment to seeing it stay natural," said Ty Ratliff, Conservancy land protection specialist. "His interest in the region

started simply with the Island as a sailing destination. Since then, he has truly fallen in love with Beaver Island, its shoreline, and its people."

The new preserve is found within walking distance of Paradise Bay and St. James Bay. It comprises hilly land (where the McDonough and Green children spent many hours sledding). From the beach, views of Garden, Hog, and Squaw Islands can all be seen. In addition to being natural habitat for deer, wild turkey, and other animals, the state-threatened Pitcher's Thistle and Lake Huron Tansy grow on the new preserve. Situated at the north end of the Island, the piney land protects major waterfowl and migratory bird habitat.

From the start, Woollam was most interested in leaving the land as natural as possible. "When you see it, you will understand why I fell in love with it the first time I saw it," Woollam said. He recently learned that until 30 years ago, a Coast Guard tower sat on shore and was used to survey shipping lanes for any trouble; it was where John Andy heard the *Marold* boom. Remnants of a

path to the old tower site exist today.

Before acquiring the initial parcel, Woollam was introduced to the owners, George and Althea Petritz. A relationship was started and John eventually met much of the family, some of whom share his sailing passion. The family's longtime love and enjoyment of the Beaver Island land was for the same reasons that it had captivated him. The Petritz family was thrilled to sell, knowing the land would eventually become a nature preserve. Piece by piece, Woollam worked with the neighbors to secure adjacent acreage and expand upon the land's protection. He even had a home moved off an adjoining parcel to the Back Highway, and then actively participated in the restoration of the site.

In his personal description of the preserve and why he created it, Woollam wrote: "People, animals, plants, and trees allowed. All other human-made structures or objects prohibited. I would like it to remain a place to quietly appreciate nature."

– Anne Fleming

### Beaver Island Marina



At Your Service:  
Transient Slips  
Fuel - Charts - Shipstore  
Auto & Boat Repair  
Licensed Mechanic  
Storage & More

**Gas Station and Car Rental  
Gold Card Savings**

Check out our ship store: Gifts, Bait, and More.

**25860 Main - P.O. Box 76 - Beaver Island, MI 49782**

**MARINA (231) 448-2300 - FAX (231) 448-2763**

**AUTO / REPAIR SHOP (231) 448-2307**

**[www.beaverislandmarina.com](http://www.beaverislandmarina.com)**

### M. Collins Construction Inc.

Beaver Island Licensed Contractor for 22 years

New Homes, Additions, Remodeling, Garages,  
Pole Barns, Metal Roofs, Siding, Window  
Replacement, Sips, ICF's, Cellulose and Design

Michael Collins  
36860 Mossi's LN.  
Beaver Island, Michigan 49782

Phone/Fax (231) 448-2923  
Cell (231) 313-8739  
Email: [mjc3855@gmail.com](mailto:mjc3855@gmail.com)



### Gregory Larson Architect

Offering Quality Architectural Design Services to  
Beaver Islanders for over 25 Years

1514 Mifflin Street  
Huntingdon, PA 16652 Phone: (814) 643-5053  
[greglarson1@verizon.net](mailto:greglarson1@verizon.net) Fax: (814) 643-0972





## LIGHTHOUSE SCHOOL HONORS FALL GRADS

There were many tears, cheers, and congratulations for the two newest graduates of the Beaver Island Lighthouse School, Alicia Sepell-Rikli and Lance Flees. Thanks to their dedication and hard work, both were excited and proud to be receiving their high school diploma. Alicia was awarded the honor of being named valedictorian of the class and was the recipient of the 10-10-10 scholarship. She plans to attend college on the mainland next fall. Lance plans to pursue a career developing electronic games (it's only a rumor that he's almost done with one he calls *Escape from the Rock*). We wish

them both the best in the future and hope they remember their time on Beaver Island.

We must not forget the accomplishments of the other twenty-two Lighthouse students. Each received a

certificate of completion for the Fall 2011 session. Their curriculum and schedule are rigorous, but each and every one of them did it! Congratulations!

The Island is looking forward to another year with the Lighthouse students, who add so much to the ambiance. Hoops (including games against the BICS team in St. James), Halloween haunted houses (which get better and better each year) and, according to one Beaver Islander, "the most ridiculously delicious spaghetti dinner on the Island!"

Thanks to each and every one of you, and we will see you in February 2012!







# Ed Wojan Realty

Your Key to BEAVER ISLAND

Edward B. Wojan – Broker  
26300 Back Highway  
P.O. Box 86  
Beaver Island, Michigan 49782



231-448-2711 or toll free 1-800-268-2711

view on our web site at: [www.edwojanrealty.com](http://www.edwojanrealty.com)

## Cabaniss Home —35720 Jewell Dr. “Vale of Tralee”

2,064 sq. ft. Lake Michigan home with attached 720 sq. ft. garage-workshop area on the east shore of Beaver Island, just south of Little Sand Bay and north of Conn’s Point (just north of Kerry’s Corner at the end of Jewell Drive on the 2006 Wojan-Cashman Map). This home, 3.7 miles from the center of the town of St. James, with 200 feet of lake frontage and 8.3 acres is in a very secluded but beautiful location with a large chunk of property immediately north of it that will never be developed. This is a 28’ x 60’ manufactured home with a cathedral ceiling plus a 12’ x 32’ addition that was added soon after the house was placed; this lakeside addition provides sunshine and lake viewing at its best. The house has a 180-foot artesian flow deep well and a fairly new septic system. It has a master bedroom with a large master bath (with a separate shower and a large tub) and a his and hers spacious walk-in closet. There are also two other nice guest bedrooms that share another full bath. A very large, well set up kitchen with an island counter makes this a good home for year-round living and/or entertaining. The large living room (with dining room area) has a fireplace with two sets of French doors off this main room that provide access into the all glass lakeside addition. The garage-workshop area is insulated for easy year-round use. This lakefront home is set up to be very comfortable as either a very good summer home - or a retiree’s year-round dream home. Almost all of the furnishings and appliances can be included. The owners really have this house priced to sell at less than they have in it. **The owners really need to sell the house right now so it might be possible to negotiate a special sale price with the broker, Ed Wojan.**

**Asking price \$315,000.**

## Ron Wojan - General Contractor Inc.



**Q**uality Built Homes with attention to detail and customer satisfaction. We build a variety of projects from small cabins to Lodges. Ron has over 30 years experience building homes on the Island.

[ronwojanc@tds.net](mailto:ronwojanc@tds.net)

231-448-2400

36869 Kings Highway . Beaver Island Michigan 49782



**ANDERSON AERIAL PHOTOGRAPHY**



e-mail [aap.mba@charter.net](mailto:aap.mba@charter.net)

phone 231-947-4598

## ST. JAMES BOAT SHOP



BEAVER ISLAND,  
MICHIGAN

EST. 1985

231-448-2365

231-838-2883

**BILL FREESE & DAN BURTON / BUILDERS**  
[WWW.STJAMESBOATSHOP.COM](http://WWW.STJAMESBOATSHOP.COM)  
EMAIL: [STJAMESBOATSHOP@YAHOO.COM](mailto:STJAMESBOATSHOP@YAHOO.COM)



We like to

**Move It Movers**

*Trucking & Maintenance*

**Dave Avery**

PO Box 110

Beaver Island MI 49782

Phone: 231 448 2670





## THE CANTATA TURNS 11

On the first Sunday in December 22 talented singers put on the 11<sup>th</sup> annual Christmas Cantata at the

Christian Church, demonstrating a wonderfully orchestrated harmony. The spirited performance of songs alternating with readings by Pinky Harmon and

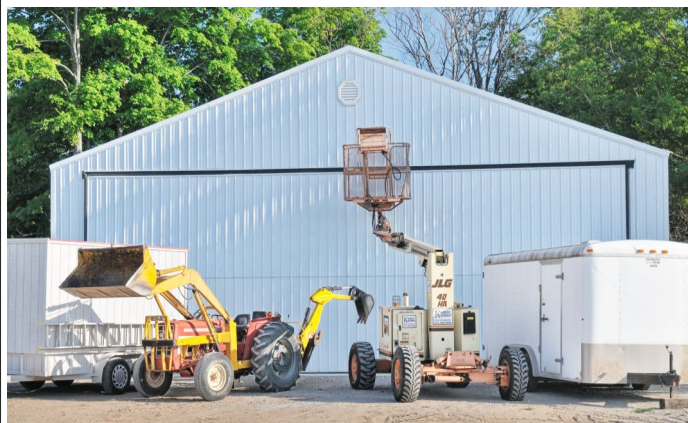
Adam Richards followed four preliminary numbers, two instrumentals by Judy Meister and Joe Moore, a song by Sheri Timsak backed by Mike Scripps, and

## Mark LaFreniere Painting

Interiors and Exteriors  
Free Estimate  
231-448-2220

## Larry Laurain Construction Licensed and Insured

Custom Home Construction  
Remodel • Additions • Garages



Free your inner architect and enjoy  
a worry-free project by working with  
Larry Laurain Construction.

Custom New Homes  
as well as quality additions and remodels.

**231.448.2055**



**McDonough Construction, Inc.**

State Licensed and Insured  
Certified in Lead Safety and Weatherization  
25 years of honest experience Quality craftsmanship  
New construction, remodels, additions, garages  
Construction Consulting

Contact Kevin B. McDonough Home: 231.448.3038 Cell: 231.675.5444





Mike's own spirited version of the crowd favorite, *Mary Did You Know*. Unfortunately the *Recordoleros* and the Chimes Orchestra could not perform due

to scheduling conflicts with their Broadway engagements.

Once again Kathy Speck did a superb job of orchestrating the afternoon,

as was attested by the applause from the ninety enthusiastic audience members. As one of them said afterwards, "It's not Christmas unless we have the Cantata."



*The Restaurant  
at Beaver Island Lodge*

*Where the Cuisine is as Wonderful as the View*



**231-448-2396**

**[www.beaverislandlodge.com](http://www.beaverislandlodge.com)**



**BEAVER GEMS, INC.**

- General Contracting
- Specializing in commercial construction on Beaver Island
- Homes
- Crane Service
- Projects from remodeling to cell towers!



Call for more info: **231-448-2235**

email [beavergemsinc@tds.net](mailto:beavergemsinc@tds.net) fax 231-448-2740

web [www.beavergems.com](http://www.beavergems.com)



Beaver Island Rural Health Center



Beaver Island Community Center



CMU Gillingham Academic Center



I was chairman of the annual ATV raffle for the Preservation Association, a fund raiser for the Community Center. In mid-October, we sent the ATV over to Charlevoix so tickets could be sold at the Apple Festival. Ticket sales were dismal because the weather was cold, wet, and windy. While walking past, one gentleman stopped to look over the unit, say-

ing that it would be quite a trip to get it to his place, and kept on walking. I immediately mentioned that delivering was included to any of the contiguous 48 states. So he bought 3 tickets, adding to the list of our sales.

Upon the drawing on November 19, 2011, Father Joe was asked to pull the tickets out of the jar, and the last ticket



drawn was to be the winner. I called Quin Bruland the next day, the lucky winner of the ATV raffle, and asked him what he would like done with the prize. He said, "you know the fellow that sold me the ticket said he would deliver the unit, but I figured he was just joking." I said, "It could have been one of a half




Welcome our friends and family to the

## 46th Annual St. Patrick's Celebration

February 18th, 2012  
The Party begins at 7:00pm

---

Donation: \$10.00 per person  
Proceeds benefit Beaver Island (Donations Welcome)  
~ Cash Bar ~  
~ MUST be 18 to be admitted ~ MUST be 21 to be served ~  
~ Bring your ID ~ Beaver Island Style Music ~

---

The Celebration is at the  
**Ramada Plaza—**  
3333 28th St SE  
**616-949-9222**

Call early for reservations and mention "Beaver Island Celebration"  
Room rates are \$71.00 plus tax / night.

Attached to the Ramada Plaza is "Old Chicago" Pasta and pizza restaurant. Also offered is Castaway Bay and Splash tower; a tropical getaway themed water park featuring a 180' indoor water slide, a game room, seating, and fitness room. Four wrist bands are included with your guest room. Coolers are allowed. Woodland Mall and many shops and restaurants are within walking distance behind the hotel.

Chinese Auction!!!!... 50/50 Raffle!!!!... Door Prizes!!!!  
Fun!!!!... Friends!!!!... Family!!!!... Music!!!!... And Much More!!!!

Come gather in the lounge Friday night with some Irish entertainment and enjoy the 5 Leaf Clover band!



## AMVETS' SANTA

On top of all the other things our AmVets do, they also add to the joy of our children at Christmas time by set-



## WHERE EVERYBODY

When Dorothy Willis slipped and cracked her hip a few weeks ago, her many Island friends were worried she'd be out of circulation most of the winter. They had not accurately estimated her drive and resiliency.

On the last day of the year she returned home — in good spirits, thanks in

### The Beaver Island Writers Group Announces the publication of the first annual **Beaver Island Reader**

Date of publication, May 2012.

We invite

1. The submission of poetry, fiction, and essays written on or inspired by Beaver Island.
2. Help with organization, reading, and editing submissions, and the design, publication, and distribution of the journal.
3. Assistance in planning and creating

### The Beaver Island Writers Workshop

a symposium of readings, lectures, and discussions associated with the publication of the **Reader**.

To be held at The Brothers Place August 16-19, 2012

Deadline for submissions: April 15, 2012

Write [beaverislandwriters@ymail.com](mailto:beaverislandwriters@ymail.com) for more information.





dozen of our Board members, who knows? I can have it crated and shipped common carrier. Simply let me know your thoughts." A day or two went by and I called him back telling him, "I was serious when I sold you the tickets. If you put Sally and I up for the night, I'll deliver the John Deere Gator down to



ting up a "Santa's Workshop" for our school kids and lending an ear for a recital of the tikes' secret desires.



**KNOWS YOUR NAME**  
part to being greeted by the Red Hat Ladies and other friends, some dressed in 'snowman' costume and others carrying giant cards urging her to not miss a beat.

She'll have to follow a wheeled walker for a little while. "If I still need it after the snow falls, if it falls, I'll trade it for one on skis."

you," which meant driving down to Mississippi. Sally and I departed on December 4<sup>th</sup>, again windy and rainy all the way down.

We arrived at his 7<sup>th</sup>-generation farm at dusk on Monday, in Tunica. We enjoyed our discussion at his dining room table. Quin Bruland was a southern gentleman who took us out for a fine

dinner and put us up for the night, at his duck hunting cabin deep in the Mississippi Delta. Sally and I are no strangers to adventures and enjoyed our trip. Hopefully we can encourage our new friend in coming to Beaver Island with his family someday! A person must simply hold true to his word.

— Jon Fogg



## Winter Values Offered By Fresh Air Aviation

❄️ **Warm Plane, Warm Seat** – need we say more!

❄️ **Islander luggage perk** - If you do not use your full luggage credit off the island, you can use any pounds left over for your return flight to the island on the same day.

❄️ *We Care!* **Freight Services** – You can expect damage free freight shipments and a prompt, friendly phone call when your freight arrives on Beaver Island. Freight pickup and delivery service available both on Beaver Island and in Charlevoix for a nominal service fee.

**WINTER CAR CARE** – Have your car warm and ready When you arrive in Charlevoix. You can't get any better than that!

**Winter Fest 2012 – Lake G. February 18th**

*Excellent service at a great value – You're Worth It!*



*Fly Right!*  
Phone: 231-237-9482 or 888-359-7448  
Beaver Island Local: 231-448-2089

WWW.FRESHAIRAVIATION.NET  
06918 Old Norwood Rd.  
Charlevoix, MI 49720

Just a half mile south of the airport entrance





**Ten Years Ago** The *Beacon* celebrated the completion of the downtown repaving, sidewalks, and streetlights, marked by a ceremony orchestrated by Township Engineer Gary Voogt in which all the streetlights were turned on, one at a time.

The Youth Consortium's ice rink was set up behind the Peaine Hall, thanks to help from several volunteers, the firemen, and the H & D crew.

The Hunters' Dinner served 102 in the Parish Hall. Karl Heller won the Big Buck contest with an 8-point. Kurt Smith was runner-up with a 9-point.

A public meeting on the new St. James Recreation Plan was to be held in mid-January.

Fears that the BIRHC \$1,500,000 grant would be denied at the last minute were allayed by the arrival of the money into its account.

The Historical Society completed a roof over the Island's first generator at the Heritage Park on the Donegal Bay Road, its second installation there.

New research revealed that our sand dunes were not 5,000 years old, as had previously been believed, but closer to 500. This research involved investigat-

ing the number of layers in the growth of a dune, each layer being composed of fresh grasses and other vegetation, which held for awhile before being covered by a sand blow. It determined that in general there were spurts of dune growth in Michigan 4,100, 3,500, and 2,000 years ago—and then growth stopped for 1,500 years. Then a new period of growth here began, with the most recent spurt occurring ~150 years ago. The sand dunes are irreplaceable because they were formed by glaciers grinding quartz rock. This research shifted the general assumption that dune

## A VISITING SHIP—SUNK AT THE BIG MAC

It was only 135 years ago that Captain Bundy sailed his gospel ship, the *Good Tidings*, into Paradise Bay, but it seems like yesterday.

Captain Bundy had been here before on strictly commercial ventures. He was a rough type who could hold his own on any waterfront. Nobody would put one over on him.

Henry Bundy was born in England and sold by his father into seven years of seaboard service when he was ten. That let him see the world, but almost killed him. When he finished his term he was put in the British Navy to complete his education.

He reached the Great Lakes in 1858 at age 32, sailing out of Chicago in the wheat trade and learning to read and write during the winter. During the 1860s he sailed out of Detroit on his own ship, the *Potomac*, his first. While docked at the Halstead Street pier in Chicago some women from the nearby Methodist church asked if they could come aboard to hold a religious service in his cabin. He loved music, so he said why not. It did not take long for him to become a believer – and begin preaching whenever he could.

Seven years later he began visiting the isolated fishermen's islands in northern Lake Michigan in an old 23' lifeboat he christened the *Glad Tidings*, preaching and passing out Bibles. The next year he had a new ship built, a two-masted 40' schooner, to which he gave



the same name. Two years later he was ordained.

He sailed into Paradise Bay, but was told that Father Peter Gallagher was in charge of Beaver Island's souls. Father Peter's followers had a forceful way of expressing their opinions (when the reigning Bishop tried to remove Father Pete, his followers sent him packing – twice), and the *Glad Tidings* passed by several times in the years to come without making port.

His route expanded to include the sea lanes from Buffalo to the Sault, and then to the Madeline Islands and even Duluth. He would preach for hours, and sing with fervent enthusiasm. He believed his life was controlled by God. When the *Glad Tidings* went aground near the Les Cheneau Islands he refused offers to be towed free, and preached for several days there until the sea rose and lifted him off.

In 1883 the third *Glad Tidings* was launched, a 113' schooner weighing 50 tons, which had cost almost \$7,000. But within six years he had so many regular stops to make that he needed a steamship. His supporters raised the over \$10,000 required for the 80' *Glad Tidings IV*, which included a chapel with 45 seats. Over the following few years he averaged a service a day.

But costs were rising, and in 1895 Bundy had to sell his steamer and switch to passenger ships to keep his preaching engagements. In 1903, at the age of 77, he was reduced to preaching on the street corners of a few cities. He retired in 1905, and passed away in 1906.

But his last steamer had been lengthened to 100' and was used by several owners until 1944, when it was converted by the Arnold Line into a flat-topped barge. It was retired in 1952, but brought back two years later to be sunk in almost 2,000' of water between Mackinac Island.

She was towed out and set on fire, but she would not go down. She was rammed several times by the *Iroquois*, a sturdy car ferry, but she kept afloat. Lines were attached to her steel ribbing in an attempt at capsizing her, and the Coast Guard made several high-speed passes, to no avail.

Finally tons of water were poured into her hold, sending her to the bottom. And there she still sits.



movement was always due to human activity, by revealing the recurring changes wrought by nature.

The year-old police report for 2001 showed 19 misdemeanor arrests, 22 felony complaints but no arrests, 45 traffic accidents with 4 injuries, 44 tickets, 23 abandoned vehicles, and 24 animals impounded.

Sympathy was offered for the loss of Doris Morlan, who with her husband moved here in 1985 and became known as a pie baker and supporter of many local activities.

**Twenty Years Ago** The EMTs were

looking for volunteers to act as victims so the EMTs could get some much-needed practice.

The St. James supervisor, Liz Clapham, submitted the Beaver Island recreation plan to the county.

The Island deputy, Jim Owens, announced his transfer to the mainland.

It was estimated that 600 junk cars were littering the landscape, despite zoning rules prohibiting this – and a licensed salvage yard. There had been no removal since 1975. An Island clean-up was being planned.

The *Beacon* included a letter of

explanation and an energy usage survey form from the Beaver Island Energy Project. Energy audits were planned for the spring.

Sympathy was expressed for the passing of Mary (Malloy) Halloran, the sister of Larry, Bob, and Loy Malloy.

**Thirty Years Ago** The *Beacon* printed a poem by Sheri and Dawn Mooney on its front page in which Island ways were explained to fudgies.

The *Beacon* included a long, unsigned article on the Island's history, stating that the first census showed its population to be

*continued on page 18.*

## IN MEMORY: JOHN RUDDELL

John M. Ruddell, Jr., age 92, of Palm Coast, died Saturday, December 17, 2011 at the Wind-sor of Palm Coast. He was born November 17, 1919 in Anderson, Indiana, a son of John and Florence Carris Ruddell. He was a graduate of Anderson High School, and received his bachelor's degree from Indiana University. He had worked as a Manager for Weyerhaeuser for over 30 years. Mr. Ruddell enjoyed gardening, woodworking, traveling and watching the St. Louis Cardinals. He is survived by his wife, the former Mary Knoll; a daughter, Mary (William) Belden of Lancaster, PA; two sons, James Ruddell of Easley, SC., and John (Emily) Ruddell, III of Tallahassee; a daughter-in-law, Gina Ruddell of Palm Coast; eleven grandchildren, and 14 great-grandchildren. Besides his parents, he was preceded in death by his son, Thomas William Ruddell, and a sister, Georgina Ruddell.

On December 17, exactly one month after his 92<sup>nd</sup> birthday, John Ruddell died. His story though, as it relates to Beaver Island, began over a half a century ago when a group of friends decided that they would all take their families to Beaver Island and rent Henry Allen's little cottages out (and it truly was "out" back then) on Donegal Bay. For John and Mary Ruddell it was only a week that first year, it was all they could afford (after all they had four kids), but it began a love affair with a place that re-



sulted in them returning every year after that, until four years ago when only the physical infirmities of age made that no longer possible.

During that fifty-plus years they eventually bought a piece of the Island they loved, in the form of a lot on Donegal Bay. They planned to eventually build a cabin. Those of you who knew our father would not be surprised to learn that he planned that cabin in great detail, even building a model of what it would be like – all pointing to the day when they would be able to afford to actually build it. As it turned out, Mr. Allen gave them the opportunity forty-one years ago to swap their lot plus some cash for another lot, one of several, with a cabin that he had already built. They scraped together the additional money and took the lot and cabin on the beach at the end of Lake Shore Road.

Dad turned the cabin's little pump

house into a workshop. The workshop, the lot, and the cabin became the setting for his many summer projects. Thirty years ago Mom and Dad retired and Beaver Island became their home for the entire summers thereafter, although most of us believe this was their true Home; their other houses – merely places to wait for the spring thaw.

Beaver Island is Dad's legacy to his children and their husband and wives, to his grandchildren, to their spouses and "significant others", and now to his great-grandchildren. Some of us spent our honeymoons on Beaver Island, each of us has returned many many times, and some of us have now bought or built our own "summer" houses here. This is naturally an emotional time for Mom and the rest of us. We will miss Dad, with his pipe in his mouth (often unlit), his crossword puzzles on the clipboard by his chair, one of our dog's heads resting in his lap (usually being fed something they wouldn't otherwise get); but he gave us so many memories and so many stories we can tell, a huge number of which revolve around Beaver Island, that it is truly hard to be sad. We'll always have those memories and those stories for when we get together — and we'll always have Beaver Island.

Dad will come back to the Island he loved one more time, to be a part of this place forever. He's just waiting for the spring thaw.



18. **On This Date**, continued from page 17.

483 in 1850 – 74% were Strangites. It claimed the fishing boom increased the population to 2,000 in the 1880s and 90s. It said the McCann Store was built in 1887 and the dock, now our ferry dock, in 1890. The McCann Store had a generator supplying electric lights, and the upstairs served as the jail. The Beachcomber was built as a grocery store in 1900; the Shamrock was built across the street later as an ice cream parlor and dance hall, and then moved. The Cull home next to the Print Shop was built on a Mormon foundation and served as a hotel and dance hall. At one time there were doctor's and dentist's offices in the Gillespie home next door. The Parish Hall was put at 1908, also built over a Mormon foundation.

The *Beacon* included an Island map.

**Forty Years Ago** The *Beacon* reported that there was not much snow, and the Harbor was ice-free – the latest open Harbor in 30 years, according to postmaster Frank Nackerman. Ice-fishing had not started, but there was plenty of rabbit hunting.

The Game Club was cutting trees near Doty's Camp to provide browse for the deer herd.

A large New Year's party at the Shamrock drew many off-Islanders.

The *Beaver Islander* was birthed in Charlevoix for the winter. Its 5-year inspection was set for the spring. It had

made 283 trips in 1971, 8 less than the previous year because of a later start.

Sympathy was offered for the passing of Joe M'Fro's wife, Bid McDonald Sendenburgh, who had been born here in 1871, married Joe in 1924 in South Bend, and then lived here the rest of her life. She had been the assistant postmaster and then in 1939 the acting postmaster, holding the post for 14 years, whereupon she became the first full-time employee of McDonough's Market (a job she held for 20 years). She was an Island midwife, taught at the "Little Red School" at Greenestown, and at the Roosevelt School – built after Little Red burned down.

**Fifty Years Ago** Skip McDonough, Lil Gregg, and three others coached 29 Island students for the annual Christmas celebration, the singing of carols throughout the town. Afterwards Archie LaFreniere treated them to candy and cookies at the Shamrock.

Pat the Truth (LaFreniere) came up from Chicago to play Santa, and 82-year-old Peter Johnson brought his one-horse sleigh to town and gave rides to the children.

A report in the Grand Rapids Press that the Island had 166 residents led to a local census, which set the number at 202, including 93 children under 18 in 26 households. Of the 109 adults, 56 had moved here from elsewhere. John Green was the oldest resident at 90. Paul

Kenwabikise had the largest family, with 12 kids at home. There were 16 single men, 5 single women (uh oh), 15 widows (ah), and 5 widowers.

Roy Chambers, Roy Vincent, and Roy Vincent Jr. brought 11 coyote hounds to the Island for three days of hunting. They used snowmobiles. Five coyotes were killed (two by the dogs, three by guns), and two dogs were killed by coyotes. John Ozaga, the Conservation Department biologist, had tagged nine coyotes the previous summer, but none of these had a tag.

Jewell and Rita Gillespie were watching television one evening when suddenly the voice of Nellie O'Donnell talking to her daughter in Texas came out of the TV.

The *Emerald Isle* I made her last trip on December 29<sup>th</sup>.

Owen Chapman set out the first fish shanty on New Year's Day.

The Conservation officer promised more turkeys would arrive in the spring – if they could be trapped in Allegan. "It ain't easy," he explained.

Mrs. Sydney Schochet, the wife of the Island doctor, was evacuated to Traverse City by Coast Guard copter.

Sympathy was expressed for the loss of summer resident Walter Lyons, for Madeline Oswanimkee, the wife of the senior Paul Kenwabikise, and Edward Minor, the father of Mary Minor's husband.

## FIRST SNOW SERVES AS OUR RECESS BELL

**T**he people of Beaver Island awoke on December 18<sup>th</sup> to find an inch-deep smooth white covering over the ground, and immediately rejoiced. Kids bundled up and ran outside to make and throw snowballs, not being coaxed in until leaving snow angels in the yard to attract any passing good spirits. Several parents heard a wee call of *Let's go to Pisgah!*

Dogs galloped back and forth in the yard, each time putting their nose down at the end of their burst to plow up a furrow and leave themselves in white-face. Adults finally had to perform the tasks they'd put off for the previous six weeks, taking down the bird feeder, tarping the wood pile, and checking the antifreeze.

Everyone smiled, and relaxed.

The first snow on Beaver Island is

like a curtain on all the manic preparations of fall once it descends, whatever didn't get done will have to wait for spring, and we can at last begin to enjoy the fruits of summer's intense labor. Now it was time to get out the Cabelas boots, string the snowshoes, and wax the cross-country skis. During the summer all sorts of things were piled on top of the snowmobile at the back of the garage, and now those things could be thrown aside. On this first day of true winter friends were called, expeditions planned, and supplies laid in.

Pop-tops were pulled and toasts to the continuing downfall offered. Friends sitting around the rosy light of a fire noticed a few unexpected absences, which were quickly explained: "Oh, them. This year they decided to head south." In every circle the response was the same "By

golly, all the years we've known them, I thought they got it, I thought they knew this is the best time of year."

But the next day the sun came out, the temperature rose, and the snow disappeared. People began to remember all the things they had not done, which it now seemed there would be ample time and cooperating weather to undertake.

A week later we awoke to find two inches of white fluff on the fence rails. Hallelujas rang out, but by late afternoon another melt was on and we all had to return to our tasks.

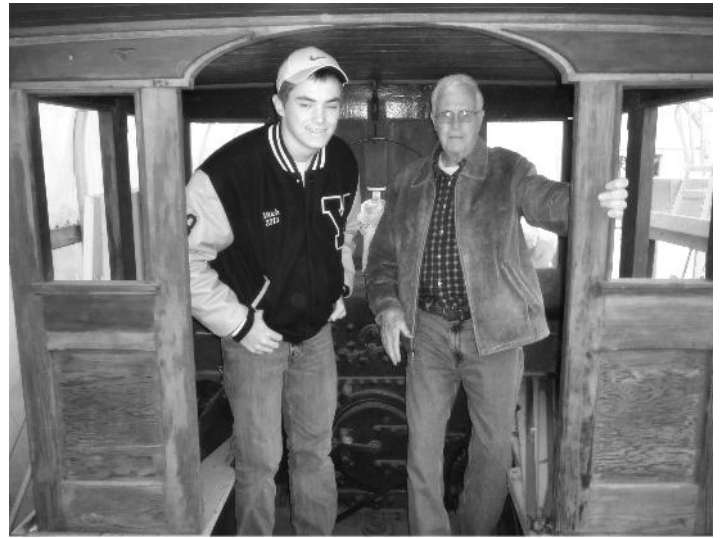
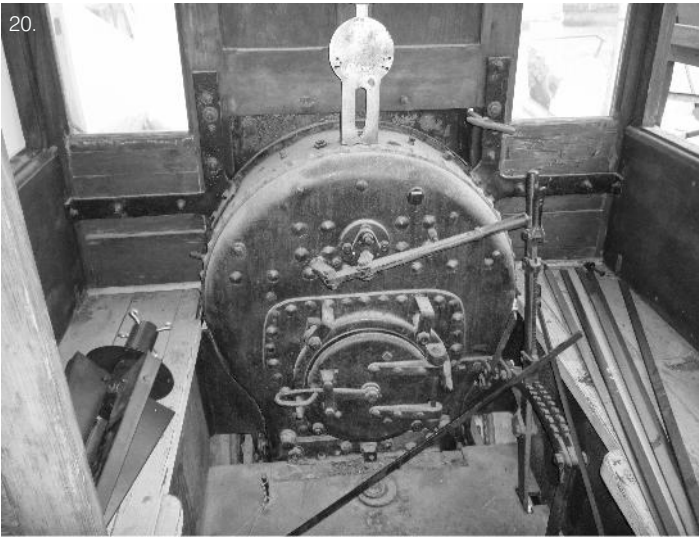
Then on New Year's Eve the weatherman lifted our spirits by forecasting 20" of snow. But as of the 3<sup>rd</sup> we were still waiting for more than a sprinkle as we sang, all together, *Let it snow, let it snow, let it snow*. Unfortunately, it didn't.

At least we have our memories.









## WORKING ON THE RAILROAD

**B**eaver Island's Heritage Park has been assembled through much volunteer effort over the last 25 years, starting with the donation to the Township of the land by Ed Wojan and the building of the tall barn at its rear. Various volun-

teer groups and hired hands helped tame the overgrown landscape, where deer had taken to sleeping in the midst of piles of empty wine bottles. Then Ernie Martin, Robert Gillespie, Jim Wojan, and Ed McCauley pitched in with their equipment. Katy Ricksgers

donated a thresher, and Jim Wojan delivered a tilt-wheel road grader.

A few years ago it was noticed that there was a trace of the old railroad bed running across the park. The time of the trains had arrived when the Island needed something to go right; the peak







of the prolific fishing era was reached earlier, in the mid-1880s, and a decline began – sometimes moving precipitously downward (in 1893 two hundred people left) and always trending down.

The next decade saw a radical shift in the Island's demography. This was the time of the Fish Wars – when the State Conservation Office believed Island fishermen would ignore the new closed-season law (they were right) and appointed a special warden, who equipped a gun boat to police Paradise Bay (which somehow caught fire at the Charlevoix dock after its first success-

ful raid, and burned to the water line). Our long-running Irish priest, Father Peter Gallagher, passed away, and Father Zugelder was assigned to take his place. He brought several German families with him, introducing new ways of doing things and ending the Gaelic masses.

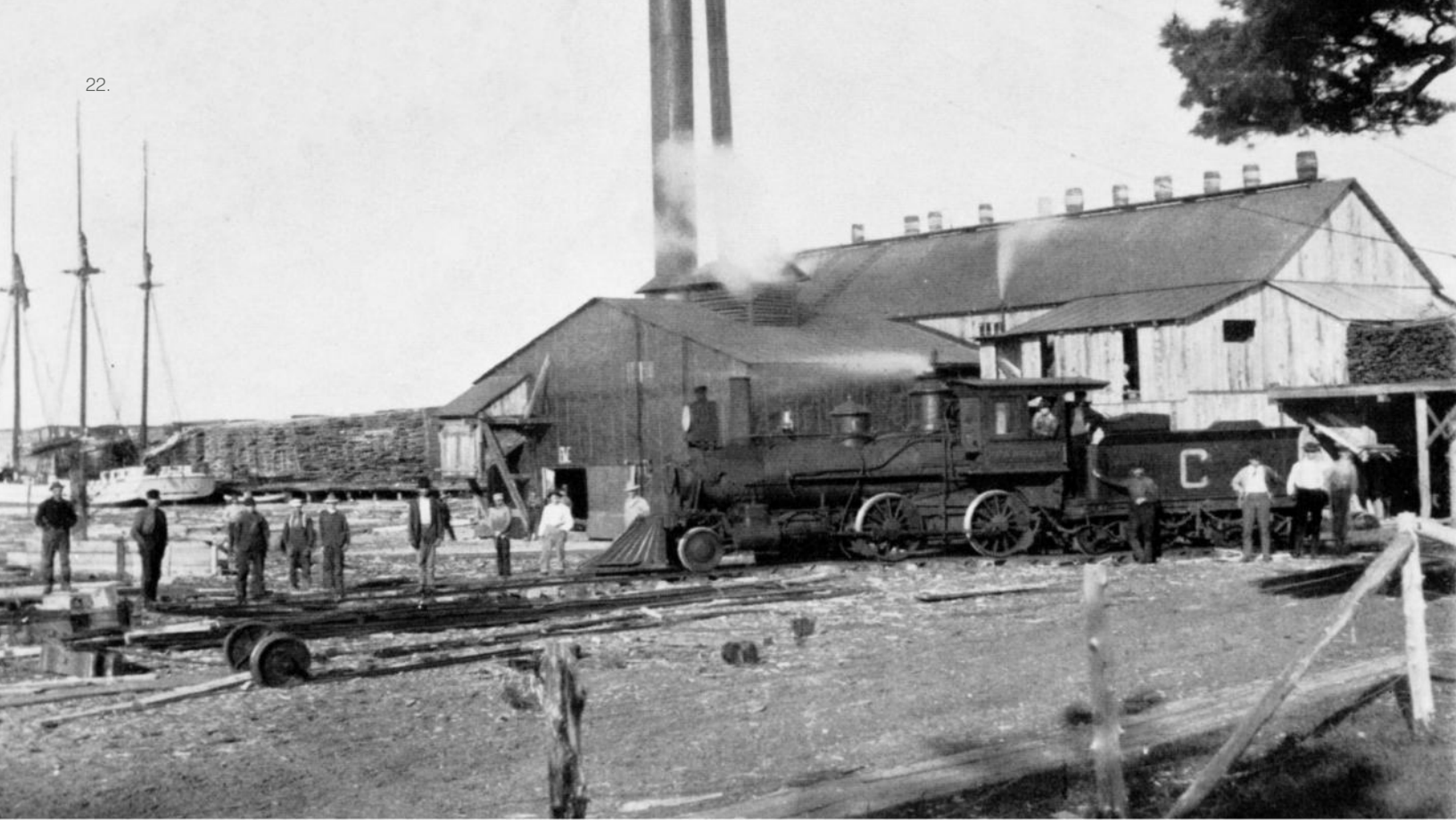
But the biggest change began in 1903, when the Beaver Island Lumber Company moved here from Free Soil and set up its operation. It built a dock, a large sawmill, and a turntable at what is now Beaver Island Marina, and began laying track to reach the West Side

forests, cutting whatever it could find as it went. It built one logging camp after another, running what would become a spur down the Camp Three Trail before backing up and continuing down what would become the West Side Road.

Two hundred men arrived to work for the BILCo, which built several small homes and a company store. It provided a doctor, although unlike Protar he charged cash money for his work. Several Island men caught on – after all, there had been sawmills here before, and many Islanders had mastered the associated chores. Some







of the imports became Islanders too, by “marrying in.”

Not only were the company’s loggers employed to cut trees, but anyone else could cut as well, either bringing their harvest to the mill or stacking it alongside the rails. A group of Indians from north of Sutton’s Bay set up homes below Angeline’s Bluff and cut logs on the top side; a few of them were still here until the 1980s.

The train also gave people rides.

Those from the country, such as Mrs. Redding, could catch a lift into town, and townsfolk could get a lift out to the berry patches to spend a day picking. The howl of the whistle was welcome.

Once the original train bed was discovered on the Heritage Park property, work on reestablishing it began. Rich Gillespie brought a load of gravel and spread it. Adam Wirth cut some of Dave and Barbara Lucas’s cedar trees north of Mike Boyle’s

beach, and Denny Keehn sawed them into ties on his mill. Then the CMU honors students did a rough placement. Jeff Mestelle did the fine tuning of the ties, Rich Gillespie dropped off more gravel, and Dean Peters raked and shoveled to establish the final grade.

Divers Mike Collins and Mike Weede pulled rails out of Iron Ore Bay, but they were too mangled and encrusted to use. A search for rails got nowhere – until CMU began remodel-







ing the Coast Guard boat house and had R B Lyons salvage four sections, each 33' long, of roughly the same age and profile as those used for the railroad. Lyons donated them, and Matt Fogg agreed to hold them at the St. James Marine dock until the site was ready. Rich Gillespie brought them to the Park with his logging truck, but couldn't position them because of an overhead electric line.

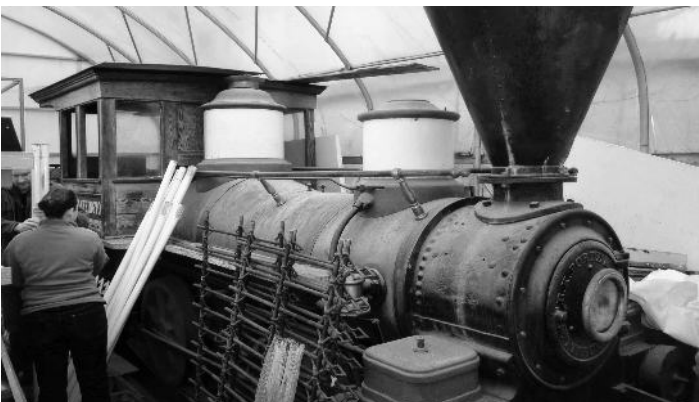
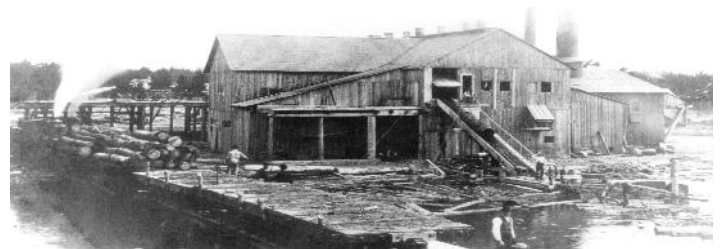
A village was needed to lift them

because of their weight, and after the Cantata a village was found – the willing and eager students from the Light-house School, who set them in place, only temporarily trapping a toe. Jim Evans found and donated the spikes, and soon the rails will be spiked down.

Dan Wardlow had come upon a Port Huron Museum citation saying that its engine, the *D. B. Harrington*, had been used on Beaver Island. Jim Dunbar and Doug Hartle drove there to see it, and

discussion took place about bringing it to the Island. But little happened – mainly because Port Huron was changing personnel and direction.

Last month Bob Tidmore stopped in and met with more receptivity. With the Historical Society Board's support he has taken on the management of the project, and will soon deliver a request for them to let us bring it here. If the claim is true, that would be its first return after over 100 years away.





## A DRUM FOR THE ISLAND

Over Thanksgiving the noted Indian leader Dennis Banks brought a present to Beaver Island, a large (48") Dance Drum he and a friend had made in Minnesota, using two buffalo hides.

After conducting the appropriate ceremony he left it in the care of new resident Fred Schoonbeck, with several specific rules. It was never to leave the Island. It was to always be treated with the greatest respect. No alcohol or drugs were ever to be used in its presence.

The Dance Drum's origin is clouded in the past, although some trace it to the 1870s. Certainly Indian tribes and villages had various drums and rattles for centuries, but their use gradually decreased after the invasion of their land. The Ojibwa Dance Drum is said to come from a specific event in which an Indian named Tailfeather Woman hid for four days from the attacks of soldiers, possibly covered by lily pads in a marsh. During this time her most fervent desire was to end the war between the races and bring about peace. Trembling with fear and forced to do without food, she was subjected to a vision in which she was instructed to make a Dance Drum, and told how to use it to bring peace. She was even taught the songs to sing with its accompaniment.

Tailfeather Woman had a mission – to spread the word of how the Dance Drum was to be used. A surge of popularity began, moving primarily



eastward. In many villages other visions were obtained, which led to her original instructions being modified.

In the decade before the turn of the century some Indian agents and white preachers started to fear that the Dance Drum would spur an insurrection, and began to rail against it. Part of their fear was because they mistook the dancing done for peace for movements associated with the Ghost Dance, which was used in the attempt to restore Indian land. Another factor in the growing resistance to the Dance Drum was simply fear of strange ways, of the irrational, and of the unknown.

The use of the Dance Drum declined for many years, but when a mood of Indian Ways revival spread across the country it saw a revival. Now many tribes have one, but few are as large as this one – said to be the biggest within Ojibwa reach. The second largest is in the Smithsonian.

Other large drums were brought to Beaver Island for special occasions – such as the opening of the Community Center or the burial of Ernie Martin. In those instances every observer was greatly moved. It is Fred's solemn hope that each occasion of this drum's use be as highly regarded.

*The rules only permit the large drum to be uncovered during ceremonies. To the right, Fred shows a smaller drum which Dennis also made for him, while the large Dance Drum remains protected under cover.*





## 26. ONE HUNDRED YEARS AGO

from Joyce Bartels

*Charlevoix Courier* Wednesday, January 3, 1912 **Local News Briefly Told:** "The tug *McCann* made a trip over here last Friday, from St. James."

"The *McCann* came over Tuesday having for freight 12 tons of perch."

"Father Malone of St. James came over here on the *McCann* Tuesday."

"D. C. Sweitzer was a passenger on the *McCann* from St. James Tuesday."

"W. J. Gallagher came over here on the *McCann* Tuesday."

*Charlevoix Sentinel* Thursday, January 4, 1912 **Front Page Article:**

### OF INTEREST TO FISHERMAN NEW LAW IS STRINGENT IN REGARD TO UNDERSIZED FISH

The law in reference to the catching and marketing of whitefish, lake trout, and mullet was amended at the last session of the legislature and the following clause should be carefully studied to by those who are engaged in the fishing industry. The particular clause that is of interest is:

"It shall be unlawful to market or have in possession at any time in this state, whether caught within or without this state, any whitefish of a less weight than two pounds in the round or one pound and ten ounces when dressed, and lake trout of a weight less than one

and one half pounds in the round, or one and one-quarter when dressed, any wall eyed pike or pickerel of less weight than one pound, any perch of a less weight than five ounces, suckers or mullet of a less length than thirteen inches. Provided, that it shall be lawful to transport and sell any of the above kind of fish, of a legal length or weight, and legally caught during any season of the year. Provided further, that until January first, nineteen hundred and twelve, whitefish weighing not less than one and one-half pounds dressed shall be legal fish."

**Local News:** "The tug *Margaret McCann* brought twelve tons of perch from the Island Tuesday of this week."

"The first mail trip of the tug *McCann* occurred Friday. She arrived about noon and returned the same day. She is expected here again as we go to press."

**Beaver Island News:** "Mr. and Mrs. James Donlevy entertained friends New Years Eve. Had a fine time putting the old year out and the New Year in."

"Mrs. C. C. Allers returned home after a month's visit to South Haven."

"Alice Johnson returned home for the winter."

"Perch fishing in the harbor is fine."

"Mrs. D. R. McDonald had the New Year's ball."

"Fr. Malone went to Charlevoix on business Tuesday."

"Dave Sweitzer went to Charlevoix on business."

"Tug *Margaret McCann* 12 tons of perch to Charlevoix Tuesday." (Note: January 1 - 4 Snow storms, extra heavy snow; January 5 First zero degrees, Fair F. Protar)

*Charlevoix Courier* Wednesday, January 10, 1912 **Local News Briefly Told:** "Harold McCann is here waiting to get over to the Island."

*Charlevoix Sentinel* Thursday, January 11, 1912 **Local News:** "Ice conditions locally have reached the winter stage. Pine and Round lakes are frozen over.... The mail tug *McCann* came over Friday, but Beaver harbor is closed and it looks dubious about her getting out again, although Capt. McCann says a good southwester will clear the harbor."

"W. W. Boyle, of St. James, came over Friday and went to the Battle Creek sanitarium for a month's treatment."

**Beaver Island News:** "Mrs. Dan

## Martin Well Drilling

- Residential and Commercial
- Water Wells: 4", 5", and larger
- Modern Rotary Well Rig

Also ...

- Pump Installations
- Well Repairs

If you want a well now,  
I have the equipment.

Call Bud @ 448-2197  
or 448-2397



**BREAKFAST LUNCH & DINNER 7 DAYS**  
**Breakfast Mon.- Sat. 7 am- 11 am Sun. 9 am - 12 pm**  
**\$5 Lunch Specials M- F 11 am- 2 pm Dinner 5- 8 pm**  
**Monday - Friday Happy Hour 4 to 6**  
**MONDAY PIZZA BUFFET ALL U CAN EAT**  
**\$6.95 adult \$4.95 child**  
**WEDNESDAY ETHNIC NIGHT**  
**FRIDAY BBQ RIBS**  
**SATURDAY PRIME RIB**  
**SUNDAY FRIED CHICKEN AT DINNER**

[www.shamrockbarrestaurant.com](http://www.shamrockbarrestaurant.com)



Martin went to Charlevoix to see a doctor."

"Harold McCann is at Charlevoix on business."

"Mrs. Gus Milkie (sic) went to Charlevoix on business."

"Dave Switzer (sic) arrived after spending New Years with his family in Charlevoix."

"W. W. Boyle went to Battle Creek Sanitarium for treatment."

"Miss Ollie Sitz (sic) went to Free Soil for the winter."

"Ed. B. Gallagher is home from Detroit for the winter." (Note: January 6 - 12 Snow storms, Zero to 12 below. Pump stuck - snow water!!! January 13 - 17 Heavy snow, stormy 2 above to 12 below Zero. F. Protar)

*Charlevoix Courier* Wednesday, January 17, 1912 **Local News Briefly Told:** "The tug *McCann* made a trip over here last Friday from Beaver Island, returning the next day. Several passengers went back having been storm bound here."

*Charlevoix Sentinel* Thursday, January 18, 1912 **Marriage Licenses:** "James B. O'Donnell, St. James, 25 Elsie Schmidt, St. James, 23."

**Local News:** "The mail tug *McCann* came over from the Island

Friday afternoon in a blinding snow-storm, returning Saturday and arriving at St. James safely. Future trips depend entirely on weather conditions."

**Beaver Island News:** "Harold McCann returned home after spending a week in Charlevoix."

"Geo. Herrick returned home from Muskegon where he has been working."

"Uyslleus (sic) McCann went to Charlevoix on business."

"James B. O'Donnell went to Charlevoix for his marriage license."

"James J. Martin went to Charlevoix to sell his perch."

"C. C. Cross went to Charlevoix on business."

"Willie Gibson went to Charlevoix on business."

"McCann's tug made a trip with the mail Friday returned Saturday."

"Dr. Griffin returned home from a visit in Cheboygan, where he was visiting his sister."

"Anthony S. O'Donnell died at his home on Beaver Island last week. Mr. O'Donnell was probably the oldest person in Charlevoix county. He was born in Ireland 96 years ago. For a number of years he sailed the oceans, coming to Beaver Island in 1864 (type

blurred - could be 1884)."

*Charlevoix Courier* Wednesday, January 24, 1912: No Beaver Island related news.

*Charlevoix Sentinel* Thursday, January 25, 1912 **Local News:** "The Beaver Island mail carriers have made one round Cross Village trip, reaching St. James Monday noon. They are to leave again today." (Note: January 18 - 27 Fair; Zero to 17 below; January 28 Heavy snow. F. Protar)

*Charlevoix Courier* Wednesday, January 31, 1912 From Beaver Island: "Peter D. Green of Duluth is here visiting his mother."

"Fishing around the Island is good."

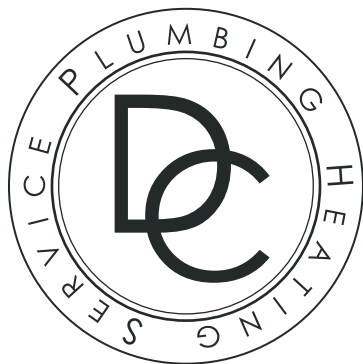
"Willie Gibson and Frank Left are making regular trips to Cross Village with the mail."

"Fred Nackerman who has been at Newberry for some time is home for the winter."

"Captain James O. Gallagher has gone to Chicago after a two months visit with his parents."

"R. W. Ballersanger of Garden Island went to Charlevoix today to make a homestead entry."

(Note: January 29 - 31 Fair Zero to 20 degrees. F. Protar)



- NEW CONSTRUCTION
- REMODEL
- COTTAGE OPENING, CLOSING, CLEANING, + MAINTENANCE
- SHOWER & BATHROOM DESIGN
- FURNACE & BOILER SERVICE + INSTALLATION
- FAUCET + FIXTURE REPLACEMENT
- WATER HEATER REPLACEMENT + SERVICE
- WELL MAINTENANCE
- LICENSED HVAC INSTALLATION + REPAIR
- LP APPLIANCE + SUPPLY INSTALLATION
- I CAN FIX ANY LEAKY FAUCET OR PIPES
- PLUGGED SEPTIC LINES
- WATER SOFTENER INSTALLATION + SERVICE
- DISCOUNTED SERVICE RATES FOR YEAR ROUND RESIDENTS

Call 231-675-8692

## DANGER

Open Water  
from St. James Marine  
to Beaver Island Boat Co.  
due to winter deicing  
of the docks.  
Thank You.



Planning a 2012 Event that we can include in the *Beacon* Calendar?  
Please send us an email:  
[beacon@BeaverIsland.net](mailto:beacon@BeaverIsland.net)  
or call (231) 448-2476 so we can add it to the calendar! Thanks!





## THE NEXT GENERATIONS USHER IN 2012

Does a new school and a new community stage make any difference?

## SCHOOL ENROLLMENT NUMBERS UP BY SIX !

The fall school count was 70 when you include the three preschool students who attend school three

From the latest BICS performances, the answer is yes. These 51 students from

mornings per week. Since then, the count has increased to 76. The new students are spread out across the grade

preschool to 8<sup>th</sup> grade once again put on the annual Christmas program, a rite of

levels, with two elementary students, two middle school students and two high school students. School enroll-



Okay – we made it through the Holidays in one piece. Now it's time to give ourselves a well-deserved reward by sitting back with a good book: *Life in the Beaver Island Archipelago*.

For only \$35 a copy can be mailed to you in a study box direct from Beaver Island – it's that easy!

Just fill out the form at the back of this magazine, send it in with a check, and sit back and relax while Beaver Island comes to you.

**WANT TO RENT YOUR COTTAGE MORE IN 2012?**

Place an Island Cottage Rental Ad in the Beacon. Your cottage will be seen in print and on the web. (231) 448-2476 or email [beacon@beaverbeacon.com](mailto:beacon@beaverbeacon.com)







29.



passage before the winter break and an Island tradition to bring in the holidays.

They did it with inspiration and grace. Confidence and good cheer marked the

day, from bells and strings to poetry and song. A great success!

ment has fluctuated over the years with the average student enrollment for the last fifty being 72.

The Island boasts a top-of-the-line facility, and a group of excellent teachers. Now all that's needed is a

wealthy foundation to hand out scholarships to the parents of bright young people so they can afford to move here.



## For Sale: Collins Home - 37756 King's Highway Beaver Harbor Frontage

more photographs can be seen at [www.edwojanrealty.com](http://www.edwojanrealty.com)

A very rare offering of a newer home ON BEAVER HARBOR with a fantastic view of the entrance to Paradise Bay. The house sits up on a bluff overlooking the harbor, offering an unequalled view with a deep running lot from the King's Highway right down to the water's edge. The frontage has a pure sand bottom, great for swimming and safe for kids.

The first floor level has two bedrooms and one full bath, a formal dining room, a living room with a wood-burning fireplace, an excellent fairly new kitchen, and a screened-in three-season porch. There is an open deck on the lake side in front of the living room, and a protected private hot tub area below the porch with a full view of the harbor just outside the walkout basement door. The walkout basement is being used as a master bedroom by the current owner (with a second  $\frac{3}{4}$  bath on this lower level). There is also a laundry room in the lower level.



This home is unique: very few homes in the town of St. James have a view of the harbor like this. If you like the idea of watching the boats come and go, and seeing sunrises and moonfalls, this could be your perfect retirement spot, a very nice summer home, or an excellent rental property.



The finished area downstairs can be a bedroom suite, family room, or any other use you might desire. The house has over 1,740 ft<sup>2</sup> of finished living area – plus an attached one-car garage. It recently underwent extensive improvements by the owner/builder Mike Collins. A new roof, new electric hot water boiler, and new, long-lasting shake shingles were installed last year. In 1989 a new deep well was put down, and in 2001 a new septic system was added. New landscaping and walkways were put in, and a double-insulated dog door was installed in the basement to a 15' x 100' dog run. New floor coverings installed on both levels, and a new stove and refrigerator in the kitchen. Because this is some of the most valuable lake frontage on Beaver Island (a minimum of \$2,000 per front foot), **this house is a tremendous opportunity. PRICE REALLY REDUCED - NOW FIRM AT ONLY \$249,000.**

Contact owner and Agent Michael Collins / Ed Wojan Realty

phone: 231.313.8739 email: [Mjc3855@gmail.com](mailto:Mjc3855@gmail.com)



# Emerald Isle Hotel

[www.emeraldislehotel.com](http://www.emeraldislehotel.com)



*Very Nice Rooms  
with kitchens  
& Apartment Suites*



*Right on the edge  
of Town, the Island's*

*newest Hotel*

*one block from the Ferry Dock*

*Conference Room . Free WIFI Internet access*



*for reservations, please call 231.448.2376*



## A Blessed New Year



*Services every Sunday at  
9:30 a.m. at Peaine Township Hall, with  
Sunday School for children at the same time.  
Bob Hoogendoorn, pastor.*

## Charlevoix State Bank

*Your Hometown Community Bank*

*Local service you can trust on Beaver Island*

*Beaver Island Branch December - April Hours*

*Tuesday and Friday 9:00 a.m. - 2:00 p.m.*

### 5 Locations :

*Main Office 547-4411*

*111 State St. · Charlevoix*

*Beaver Island 448-2190*

*38230 Michigan Ave. · Beaver Island*

*East Jordan 536-5511*

*100 Main St. · East Jordan*

*Ellsworth 588-2211*

*9136 Main St. · Ellsworth*

*Drive-up Only*

*102 M-66 · Charlevoix*

*Internet Banking . Bill Pay . Personal & Business Banking*

Member  
FDIC



1-800-547-6080 • [charlevoixstatebank.com](http://charlevoixstatebank.com)

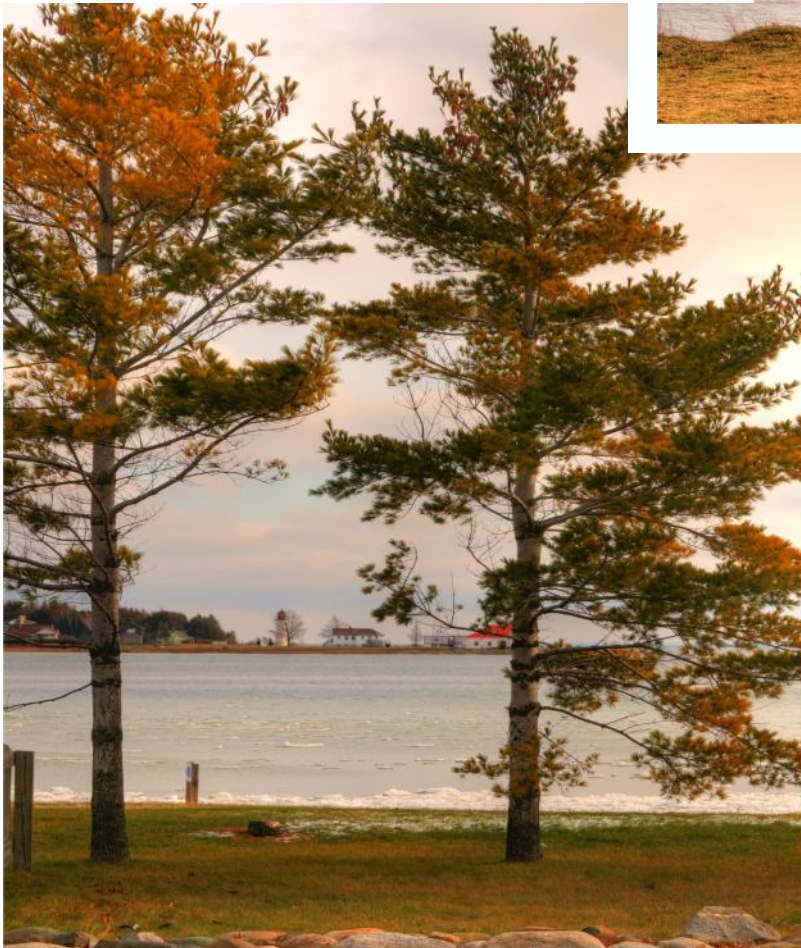




ISLAND SPEED RACER™



SO THIS IS WINTER





# ***Stoney Acre Grill***

*\*Seafood\*Steaks\*Salads\*Mexican\*Sandwiches\*Vegetarian\**

*\*Pastas\*Mediterranean\*Appetizers\*Pub Fare\*Specials\**

*Thurs-Baby Back BBQ Ribs \* Fri-Yellow Lake Perch \* Fresh Whitefish Daily \* Daily Specials plus full Menu*

*High Standards, Great Quality, Low Prices*

## ***Donegal Danny's Pub***

*Neighborhood Tavern with Island Charm,  
Vast Selection and an Emphasis on Service*

*Six TV's, IPOD, Wii, Darts,*

*Friendly Bartenders, Great Prices*

*Music most weekends...never a cover charge or drink price increase*

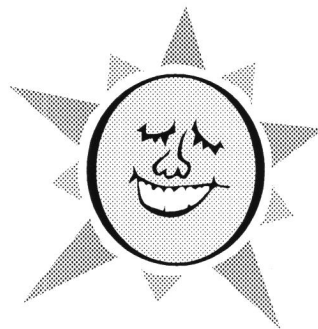
*Open 7 Days*

**448-3000**

## **Stoney Acre Grill & Donegal Danny's Pub *are For Sale***

**Interested Parties Please Contact**

**Liam & Marilyn (231-448-3125)**



### **Lunch**

**Mon-Sat  
11am-2pm**

### **Dinner**

**Mon-Sun  
5pm-9pm**

**\*Carry-Out  
Available  
\*Rides  
Available**

**One Mile South of  
The Boat Dock Off  
The King's Own Hi-Way**

**448-2560**

We would like to thank our customers for one of the best seasons  
we have ever had. We are at retirement age and ready to change  
our lifestyle. It is with mixed emotions we announce

## **DADDY FRANKS**

**Restaurant and Ice Cream Parlour**

### **Is For Sale**

- well established seasonal business
- over 2/3 acre of prime downtown commercial property
- newly remodeled attached studio apt.
- all equipment, fixtures, and contents included in sale

**\$325,000**

**negotiable land contract terms available  
minimum 10% down**

**Qualified interested parties can call**

**Nancy or Roger Sommer (231) 448-2550**

## ***Beaver Island Association***

*Supporting Environmental  
and Economic Sustainability*

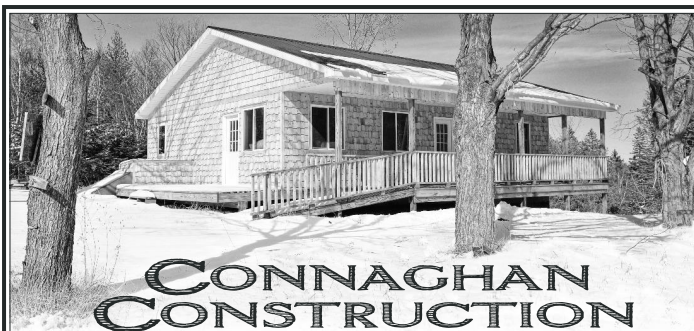
**Join Now!** Keep in touch with Beaver Island events  
likely to affect you and your property.



**Receive *Island Currents***, the informative BIA newsletter.

**Contact:** *Bob Anderson, Treasurer* at BIA, Box 390,  
Beaver Island, Michigan 49782

**Visit our web site:** *BeaverIslandAssociation.org*



## **CONNAGHAN CONSTRUCTION**

**COMPLETE BUILDING AND REMODEL  
ADDITIONS, GARAGES, DECKS, PATIOS, PORCHES  
KITCHENS AND BATHS, FLOORS AND MORE  
FREE ESTIMATES. TONYCONNAGHAN@GMAIL.COM**

**231 448 2343**

**CELL 616 843 5381**





A MARC TENSER PRODUCTION

ALL RIGHTS RESERVED

## LUCKY SPEAKS

On priorities: A paved bike path next to a dirt road? A giant medical center with no doctor? Putting the assisted-living center 100' from a bar? Now that makes sense.

Ode to the Familyman:

Our past, present, and future

The infrastructure

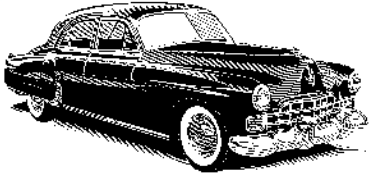
They speak only of the family.

On Clearcuts: They're ugly, and they destroy the illusion of wilderness you sell to the tourists.

Invasives: They barge in, colonize, uglify, attacking the native species. They must be fought. They can be defeated, expelled. It happened on the Manitous, and may happen here.

The price of Freedom: Truly, it's high. What with the cost of extra cars, the prices, shipping, extra electric fees—not to mention personal transportation, etc. It adds up. I call this expense the Beaver Island Tax. I'm happy to pay it because I'm buying a Stairway to Freedom.





# Inland Auto

Mobile and Land Based Repair

29 years experience in the business

## Friendly Service

Michigan master certified in  
automotive light and heavy trucks

We repair heavy equipment.

**We Build and Service**

**Electric Vehicles too!**

Jeff Connor Proprietor



# 231-448-3132

*Paradise Bay Coffee Shop*  
Across from the Township Airport



*Featuring coffee, espresso, specialty drinks, Breakfast & Lunch*

*Happy New Year*

**Closed Until June 2012**

**Thanks for the Business**

*Dale & Terry Keyes,*  
**Proprietors** [Dale\\_Terry\\_Keyes@msn.com](mailto:Dale_Terry_Keyes@msn.com)

*Paradise Bay Coffee Shop*

*Beaver Island, Mi.*

**DELI**

**COFFEE**

**ESPRESSO**

34230 Donnell Mor's Lane  
231-448-3003

34.



*Visiting the Beaver Island Lumber Company's "Bermuda Triangle": not Charles Woodson's Heisman pose, but one made famous by Ernest Hemingway during his African big game hunts.*



*The Little Engine that Could (above) and the Little Engine that Couldn't. One engineer described the sproing of a rail breaking as "worse than the call of a banshee."*





## 35

After sensing the need to have a hospice program on Beaver Island, Williams assisted in recruiting other



When volunteers leave the organization, they request to stay on the newsletter mailing list to continue to hear about the books that she shares with others.”

Teacher Miranda Rooy has received National Board Certification—one of only 348 teachers in Michigan to have been so honored. Her area of expertise is Generalist/Early Childhood. She joins fellow teacher Deb Robert as a National Board Certified teacher; Deb renewed her Generalist/Middle Childhood certification last year.

Kim Newport started at Northern Michigan University in the fall of 2008 by taking classes online. On 12-17 she now has earned a Masters of Arts in Education with an emphasis on Learning Disabilities. This will enable her to teach special education K-12. Her graduate thesis was entitled “Effective Components of Intervention for Struggling Readers.”

SumDog, a free online math gaming competition has held student (and staff and parent) attention for the last several weeks. When the competi-

tion ended on December 15<sup>th</sup>, BICS took 2<sup>nd</sup> place. New student, junior Michael Pryor, was the 7<sup>th</sup> top student in the state with 12,211 correct answers.

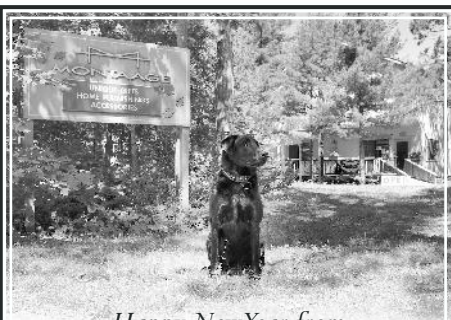
On Wednesday, December 21<sup>st</sup>, three new members were inducted into the National Honor Society. According to NHS advisor, teacher Connie Boyle, current members Jenna Battle and Olivia Schwartzfisher welcomed new

members Marissa Crandall, Erin Boyle, and Olivia Cary.

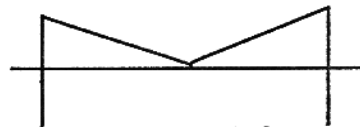
New members recited a pledge at the induction ceremony, attended by teachers, families, mentors, and younger students.

Total deer checked this year were 68 (for the rifle season). Others not checked and suspected unknowns bring the estimated deer take to about 100. They were split evenly between doe and buck. The informal drive-by survey recorded a ratio of 9 doe for every 2 bucks.

The new 60 kw emergency generator for the Beaver Island Rural Health Center was placed on a pedestal in mid-December, with the former smaller reserve power plant shunted to the Fire Hall in town. The hook-up should be completed soon.



*Happy New Year from  
MONTAAGE  
Special Gifts  
for the Special People in your life*



## *Making Art A Part of Everyday Living*

For a different Island experience come and shop in this “home away from home”—where you'll find unique gifts, fine furnishing, and accessories for your tent, cottage, or home.

We get rave reviews!  
Complimentary gift-wrapping and design services on request. You shouldn't leave Beaver Island without a trip to MONTAAGE.



# MONTAAGE

since 1929

26435 Donegal Bay Road,  
Beaver Island

231-448-2802

Call Liz or Judy (448-2441)  
to meet you at your convenience



Now doing wells on Beaver Island!



**(231) 228-5678**

4" & Up Steel Wells

5" PVC Wells

Pump Sales & Service

Well Repair

**Mark Zientek**

**John Zientek**

NATIONAL WATER WELL ASSOC.

**Certified Contractor**

Fax (231) 228-5637

233 E. Kasson Rd.

Maple City, MI 49664

## CHARLEVOIX'S BEST Beaver Island Resident Rates



Make the Weathervane Terrace Inn & Suites part of your Beaver Island commute. *Only Island residents* receive discounted lodging rates all year.

FREE Deluxe Continental Breakfast  
In-room Refrigerator & Microwave  
Wireless Internet Access (*free*)  
Outdoor Pool \* Indoor Hot Tub Spa Tower  
All Rooms have 25" TV/VCRs

**RATES FROM \$47.00 off season**

**Weathervane Terrace Inn & Suites**

231-547-9955 • 800-552-0025

One Eleven Pine River Lane

Charlevoix, Michigan 49720

Discount available to island residents only. I.D. required

## 36. BEAVER ISLAND EVENTS

January 14 – **Winter Town Trek for Food and Fairness.** The Beaver Island 99, a group of sturdy Islanders, will walk to support the BI Food Pantry and to show unity with the 99% across the country on Saturday starting at 1:00 p.m.

January 14 – **Community CPR Certification Class** 8:30 – 2:30. Call

Sarah at 448-2578 to reserve a spot  
January 16 – **NRESC Meetings**  
January 22 – **BIRHC Annual Meeting**  
February 18 – **Annual Beaver Island Club of Grand Rapids Party** - [www.beaverislandclub.com](http://www.beaverislandclub.com)

February 18 – **Winter Fest at Lake G.**  
March 17 – **Happy St. Patrick's Day** - The Great Day and the Annual

## ISLAND SWOT ANALYSIS

On December 10<sup>th</sup> fifteen people interested in the Island's natural resources met with two facilitators from MSU, John Beck and Julie Brockman, to spend the day discussing the NRESC mission. The first order of business was to review the Resolution establishing the Steering Committee to make sure everyone understood and agreed with the Townships' mandate.

There were two main thrusts to the six-hour event. First, flip charts were used to do a SWOT analysis—to establish the Island's Strengths and Weaknesses and its Opportunities and

Threats. The participants were asked to make their own lists, and then to go around the room to add their candidates to a chart, one at a time in each category. If the next one on their own list was already up, they were to put a check by it; in this way, no one dominated. Interestingly some topics appeared on more than one list; for example, our isolation appeared as both a strength and a weakness.

The second phase also involved flip charts, using them to identify the stakeholders who would have to be considered in formulating a natural resources

## REAL ESTATE, FOR RENT

**ONE BEDROOM, ONE BATH ROOM UNIT ON FOX LAKE** with full kitchen, and laundry - Sleeps two and is 20 minutes from town. Canoe and paddleboat available with balcony overlooking the lake. \$600/week. Contact Sue at [cabinbythelake1@gmail.com](mailto:cabinbythelake1@gmail.com) No smoking and no pets please.

**SAND BAY - "BAY HAVEN" COTTAGE - WEEKLY RENTAL** - Lake Front, Sandy Beach, 5 br, great view, laundry. East Side Dr.—only four miles from town. Awesome sunrises — walk to beach is straight and flat out the lower level.

No pets and no smoking. Please call Laurie Bos at (616) 786-3863 or [lauriesbos@chartermi.net](mailto:lauriesbos@chartermi.net) Photographs of Bay Haven can be seen at: [www.bayhaven.beaverisland.net](http://www.bayhaven.beaverisland.net)

**A GREAT HARBOR VIEW** - from a great "in-town" trailer. Perfect for a couple of working people. 2 bedroom, 1 bath. Furnished and fully equipped kitchen. \$1500 a month. Please call (231) 448-2235 for reservations or more details.

**LOG CABIN ON SAND BAY** - pets allowed. 2 BR, 1 bath: \$500. Call (734) 449-0804 or email [dlelzey@gmail.com](mailto:dlelzey@gmail.com)

## Life in the Beaver Island Archipelago

*The new 208-page full color hardcover Beaver Island Book*



Name \_\_\_\_\_

Address \_\_\_\_\_

City \_\_\_\_\_ State \_\_\_\_\_ Zip \_\_\_\_\_

\_\_\_\_\_ Number of books \$35.00 per hardcover book, including shipping

*If you would like a gift card sent:*

A Gift From \_\_\_\_\_

Message \_\_\_\_\_

Please Mail to: Paradise Bay Press . Box 52, Beaver Island, MI 49782



Games on Beaver Island  
 April 29 – Beaver Island **Citizen of the Year Banquet**  
 June 16 – both **Island Museums open** for daily visits until Labor Day  
 June 21-23 – **Beaver Island Bike Fest** [beaverislandbikefestival.com](http://beaverislandbikefestival.com)  
 July 16-21 – **Museum Week**, including Lois Stipp's three-day **Art Show**

July 19, 20, 21 – **Beaver Island Music Festival #10** [www.bimf.net](http://www.bimf.net)  
 July 23-29 – **Baroque on Beaver** - A Festival of Classical Music [www.baroqueonbeaver.org](http://www.baroqueonbeaver.org)  
 August 10 - 12 – **Homecoming**  
 October 6 – **Bite of Beaver Island, Apple Pie Contest**, and the **Island Boodle**

management plan, and their interests, which would have to be taken into account. Anyone present could have made a complete list (the Townships, State, planning commissions, business community, Tribes, universities, residents, visitors, and infrastructure organizations), but proceeding in round-robin fashion was done to elicit a consensus and remind the participants how many diverse groups would have to be satisfied.

All in all, the greatest accomplishment of the day was that the group now feels comfortable with each other and

realizes that any management plan will have to be carefully formulated to take into account a wide range of interests. As it advances, input from the member organizations and all interested parties will have to be considered. There is no way to predict how long it will take before a plan could be submitted to the Townships for approval and implementation; a rough guess was one to two years. However long it takes, everyone interested in the Island's future will have an opportunity to comment before and as a plan is submitted to the Townships.

**DONEGAL BAY** - 3 BR 2 bath Home; sleeps 6; many amenities. \$980 a week. Reduced rates for off-season. Phone (313) 885-7393, after 4:00 p.m.


**WEEKLY RENTAL** - Lakefront. "The Last Resort" 2 BR house on Sand Bay, great view, beautiful sunrise, laundry pair, 1 ½ bath. Phone Bill McDonough at (231) 448-2733 (days).

**WATERFRONT COTTAGE** - On the east side. Available by the week or weekend. One BR, full kitchen and bath. Enjoy the water and the woods, year round. Off-season rates. Complete privacy. (231) 448-2907.

**SAND BAY** - sleeps 8—amenities—available May- September \$950.00 wk plus security deposit. (231) 582-5057 or email [robin@robinleeberry.com](mailto:robin@robinleeberry.com)

**A HOUSE RENTAL** - Cute 2 bdrm house in woods near town, public beaches, and bike path. Screened porch. Washer, dryer. No pets, no smoking. \$595/week. Call (231) 871-0477.

**DONEGAL BAY COTTAGE** - Nicely furnished 3 BR, 1 bath, washer/dryer. On dune w/ beach access. \$775/ July & August \$600 off-season weekly. Dana Luscombe (248) 549-2701 eve or [dana.luscombe@gmail.com](mailto:dana.luscombe@gmail.com) *continued on page 38.*



To place an ad that will be seen with the Island's largest circulation, please call (231) 448-2476 or email [beacon@beaverisland.net](mailto:beacon@beaverisland.net)

### COMBS COTTAGE ON SAND BAY:

Charming beachfront cabin nestled in the woods 50 yards from the water, 4 bedrooms, 2 baths, full kitchen, washer/ dryer, queen beds in 3 rooms with two sets of xl-bunks in the 4<sup>th</sup>. Satellite TV. Perfect for families. \$900.

Security deposit. Available June-Sept. Website: [www.combscottage.webs.com](http://www.combscottage.webs.com) email: [combscottage@ymail.com](mailto:combscottage@ymail.com); or call Nancy at (719) 599-3147



## Beacon Subscription: ☐ New ☐ Renewal ☐ Gift

Name \_\_\_\_\_

Address \_\_\_\_\_

City \_\_\_\_\_ State \_\_\_\_\_ Zip \_\_\_\_\_



☐ \$30.00 / Year (Standard Rate Mail)


☐ \$45.00 / Year (First Class Mail)

*If you would like a gift card sent:*


A Gift From \_\_\_\_\_

Message \_\_\_\_\_

Please Mail to: The Beaver Beacon . Box 254, Beaver Island, MI 49782



**A BLOCK FROM TOWN, A BLOCK FROM THE BEACH:** 3 BRs, 1 bath; wireless; \$625/week; call (231) 313-6225 or email [abbieswest@yahoo.com](mailto:abbieswest@yahoo.com) [www.abbieswestcottage.com](http://www.abbieswestcottage.com)







**HARBOR LIGHTS:** Unique log home looking out over Paradise Bay. Beautiful views of St. James Harbor, Garden, and Hog Islands. Enjoy the boats from the huge deck, or sit around the fire pit on the beach. Very secluded, sitting among lush cedars and pines. 3 bedrooms with 2 queens and 2 twins. One large bathroom and one half bath. All the amenities you could ever need. Immaculate home with "spectacular" views. \$1,150 a week. Home (630) 834-4181 Cell (630) 995-0507 harborlightsbim@aol.com



### WATERFRONT HARBOR HOUSE FOR RENT:

Spectacular view of Paradise Bay! Large home with all the amenities, linens provided. 4 bedroom, 2½ baths, sleeps 8, washer/dryer, fully equipped kitchen, satellite tv. June – Sept. \$1250 a week. Short walk to the Stoney Acre Grill. Please call (231) 448-2235

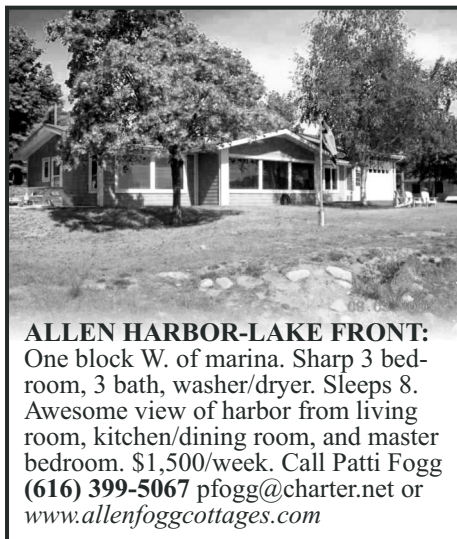


### The Convent in the Village Beautiful Harbor View

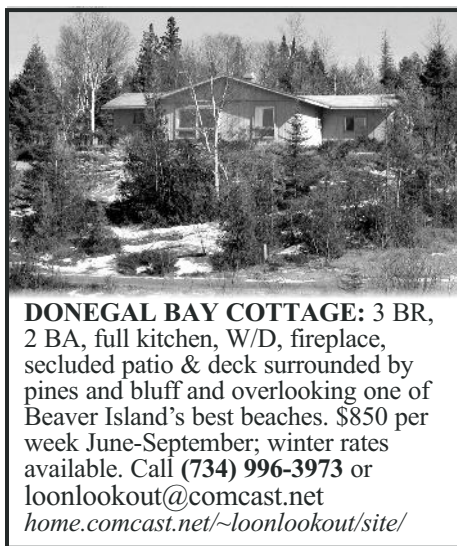
Sleeps 15 - 7 Bedrooms w/ sinks  
Fully-equipped Kitchen  
Beach Access

Great for Multi-Family Groups,  
Family Reunions, Business Retreats  
Open Year Round. Weekly Rental,  
Saturday-Saturday, in season  
3-night minimum off-season

Call 448-2206  
(Pam O'Brien)

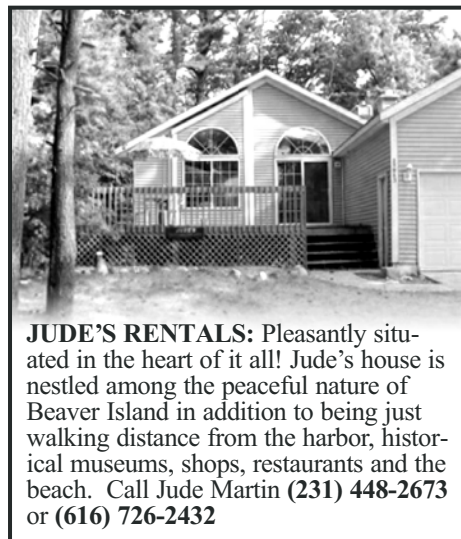


**ALLEN HARBOR-LAKE FRONT:** One block W. of marina. Sharp 3 bedroom, 3 bath, washer/dryer. Sleeps 8. Awesome view of harbor from living room, kitchen/dining room, and master bedroom. \$1,500/week. Call Patti Fogg (616) 399-5067 pfogg@charter.net or [www.allenfoggcottages.com](http://www.allenfoggcottages.com)



**DONEGAL BAY COTTAGE:** 3 BR, 2 BA, full kitchen, W/D, fireplace, secluded patio & deck surrounded by pines and bluff and overlooking one of Beaver Island's best beaches. \$850 per week June-September; winter rates available. Call (734) 996-3973 or [loonlookout@comcast.net](mailto:loonlookout@comcast.net) [home.comcast.net/~loonlookout/site/](http://home.comcast.net/~loonlookout/site/)

**COTTAGE ON BEAUTIFUL FOX LAKE** - One bedroom, one bathroom, full kitchen, laundry with bunkhouse. Cottage sleeps six and is 20 minutes from town. Dock, rowboat and deck overlooking the lake. \$700/week. No smoking and no pets please. Contact Sue at [cabinbythelake1@gmail.com](mailto:cabinbythelake1@gmail.com)  
**THE FISHERMAN'S HOUSE** - Great 'In-Town' location across the street from St. James Harbor. Four bedrooms, three with double beds and one with twin beds, two bathrooms, bed



**JUDE'S RENTALS:** Pleasantly situated in the heart of it all! Jude's house is nestled among the peaceful nature of Beaver Island in addition to being just walking distance from the harbor, historical museums, shops, restaurants and the beach. Call Jude Martin (231) 448-2673 or (616) 726-2432



**ON THE HARBOR:** Furnished upstairs apartment overlooking beautiful Paradise Bay. 1 bedroom, 1 bath, fully equipped kitchen. Porch and deck area on the harbor with possible dock slip. \$800 a week. Please call (231) 448-2235 for reservations or more details.



linens and bath towels provided, fully equipped modern kitchen, washer/dryer, TV, enclosed porch, and open deck with grill. For availability, call Bill or Tammy (231) 448-2499 or (231) 448-2733 or [tammymcd107@yahoo.com](mailto:tammymcd107@yahoo.com).  
**SECLUDED 1940s LOG CABIN** just one block from lake and market on one acre - Sleeps 4-6, pets welcome (\$100 deposit.) Washer, Dryer & linens furnished. Bicycles, canoe, grill available \$700/wk; weekends available. (219) 863-2655 or email [cehlah@urhere.net](mailto:cehlah@urhere.net)

## REAL ESTATE, FOR SALE

**10 ACRES OLD FOX LAKE ROAD** Beautiful, wooded, great building site; \$39,000. (231) 409-1214.

**FOR SALE: PORT OF ST JAMES, LOTS, 717 & 716** perked, 716 well, septic and drive approved. First \$6,000 takes both lots. Firm. (231) 854-9831. [michael.delia@muskegoncc.edu](mailto:michael.delia@muskegoncc.edu)  
**40 ACRES ON SLOPTOWN ROAD** - Call Bud at (231) 448-2397.

**WATERFRONT HOME FOR SALE** - 3 BR, 1¾ bath, at Sand Bay. Sandy beach, 2 lots: 1 w/ recently remodeled home and garage, 1 w/ large pole barn. Just appraised at \$285k. Call (231) 448-2034.

**FOR SALE, 11 ACRES ON EAST SIDE DRIVE** - good land, 357' on road, 1373' deep; \$28,900. Phone (231) 448-2545.





**SECLUDED BEAUTIFUL CHALET FOR RENT:** 10 Acres of pine with 360' of sandy Lake Michigan Beach. 2-BR (including loft), one bath, Great Room with 2 sofa sleepers. Fabulous views of the Lake. Large decks. Sleeps 7. Across from state land and hiking trails. Satellite TV. No smoking. Dogs allowed. \$700 per week. Call Ed Eicher (810) 629-7680



**ISLAND AERIE:** Overlooking harbor next to Nature Preserve, easy walk/bike to town, 3 bath, 4 BR; sleeps 12 w/ 2 king and 10 twin beds, large 1<sup>st</sup> floor decks, 2<sup>nd</sup> floor wet bar and deck, 3<sup>rd</sup> floor game room, all modern amenities and appliances, great for multiple families and groups. \$1800/wk, reduced off-season and extended-stay rates. Call John and Jan (989) 560-8639 [www.islandaerie.net](http://www.islandaerie.net) . [Jan@islandaerie.net](mailto:Jan@islandaerie.net)



**SAND BAY COTTAGE - ON THE LAKE WITH GREAT BEACH-FRONT:** Sleeps 6. Two bedrooms and loft, 1 bath. Modern kitchen, fireplace, washer/dryer, grill. Deck and screened-in gazebo. No pets, no smoking. \$800/week. Call Sue on (231) 448-2670 or [cabinbythelake1@gmail.com](mailto:cabinbythelake1@gmail.com)



#### SHORTY'S PLACE:

In town with a beautiful view of the harbor and our beach lot across the street. 3 bedroom, 2 bath, sleeps 6. Dalwhinnie and McDonough's within walking distance. \$1,200 per week. Call Patti Fogg: (616) 399-5067 [pfogg@charter.net](mailto:pfogg@charter.net) Website: [www.allenfoggcottages.com](http://www.allenfoggcottages.com)



**LAKEFRONT:** 2 bedrooms, 2 baths + large lower level with sleeping for 6. Sleeps 12 total. Washer/dryer, bikes, kayaks, wrap-a-round porch, views of sunset & Garden & Squaw Islands. \$1400/week. (773) 663-7772. Website: [www.LinnsLakeLodge.com](http://www.LinnsLakeLodge.com) E-mail: [Info@whatproperties.com](mailto:Info@whatproperties.com)



#### HIGHVIEW - BEACHFRONT

**HOUSE FOR RENT:** Exciting cottage with view of High Island from large deck. Open floor plan, huge windows on extremely private beach. 2 BRs with 2 full beds + loft with 2 twins. 1½ baths, TV/VCR, W/D, microwave, gas grill, all amenities. \$1200/week; spring & fall \$895. Limit 6 people. Please call (941) 921-2233 or (317) 769-6563 More photos at [highview.beaverisland.net](http://highview.beaverisland.net)



**7 PINES - Weekly Rental.** Close to town (short walk to Dalwhinnie) Sleeps 6, 1½ bath, washer/dryer, linens furnished, freshly remodeled, *DOG friendly*, \$750/week, Contact Gretchen Fogg at (616) 318-1424 or [gabf24@gmail.com](mailto:gabf24@gmail.com)

**HAGGARD'S SUMMER RENTAL HOME -** Overlooks Paradise Bay across from the Maritime Museum. Sunset view of harbor and village of St James is a winner. Comfortable custom home sleeps 8-10. 3 baths. Public sand

beach close by. Well mannered pets welcome. Only \$1,200 per week. Call (231) 547-4046 (day) (231) 547-6600 (evening) or email [samhunt59@yahoo.com](mailto:samhunt59@yahoo.com)

**LOCH WOOD SHORES -** About four miles from town on the beach of Sand Bay. 3 bedrooms, 2 with double beds, 1 with two twin beds, one and a half bath, w/d, full kitchen, gas grill, large deck that you step off onto the beach, gas fireplace, and a gorgeous view of Lake Michigan. Call (231) 448-2733 or 448-2499.

**2 LOTS ON SAND BAY -** 3.3 Acres each. 1700' deep. Sandy Beach Frontage 117' each. (810) 629-7680 or (231) 448-2257.

**TWO LOTS IN THE PORT ST. JAMES - NEAR FONT LAKE.** Perked, wooded, buildable. #708 & 709; electric and phone right there. \$14,000 each. Call Peggy at (269) 671-5557.

**LOTS 644 AND 645 PORT OF ST. JAMES -** Nice corner lots. \$19,000 for both. (231) 448-3088.

**20 ACRES WEST SIDE ROAD -** \$55,000; 16x18 rustic cabin (no electricity or water); Apple orchard and deer blinds; great location for hunting; ½ mile north of Fox Lake Rd; contact: Mike Eicher (248) 766-4205.

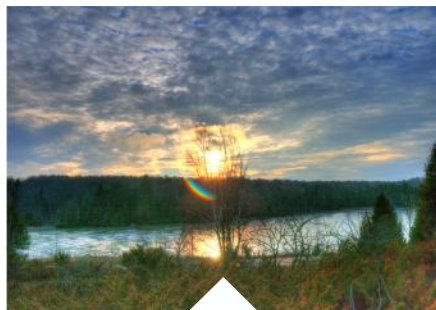
**TO PLACE AN AD -** (231) 448-2476.



#### NORTH SHORE 300' BEACH

**FRONT:** Newly remodeled Sunset Cabin overlooking Garden Island. Charming cabin with 3 season porch has Queen, Full/Twin bunk-bed and sleeper sofa. Located on Pine Street, easy walk to town. \$1,000. a week June through September. No pets please. Call (231) 448-2050 for more info.





# B E A V E R I S L A N D J A N U A R Y 2 0 1 2



P.O. Box 254  
Beaver Island, MI 49782

[www.beaverbeacon.com](http://www.beaverbeacon.com)

ADDRESS SERVICE REQUESTED

STANDARD RATE  
US POSTAGE PAID  
BEAVER ISLAND, MI  
49782  
PERMIT NO. 3