



November 2011 \$2.75

# Beaver Beacon

The Island Monthly Since 1955

STANDING TALL





## Dalwhinnie

*The meeting place*

Full breakfast, fresh baked breads, donuts, pastries, cakes, lunch with such specialty sandwiches as our famous portobelo mushroom sandwich, fresh ground beef burgers, pizza, cappuccino, fresh salads, and gourmet kitchen items and cookbooks! A great place to meet friends! (231) 448-2736.



## McDonough's Market, Inc.

Since 1933  
On America's "Emerald Isle"

38240 Michigan Avenue  
Beaver Island, MI 49782  
(231) 448-2733

Full line of groceries. Custom-cut meat.  
Fresh produce, Beer, Wine, Liquor.  
A large selection of specialty foods. Block & cube ice.  
Movie rentals. Post cards. Beaver Island clothing and gifts. Small & major appliances.  
Greeting cards. Notary service. Michigan lottery.  
Fax, Money orders & transfers, Island maps.

[www.mcdonoughsmarket.com](http://www.mcdonoughsmarket.com)



## CARY CONCRETE LTD

**GREG CARY - OWNER LICENSED BUILDER**

- |  |                    |                                       |
|--|--------------------|---------------------------------------|
| • Automated Batch Plant                  | • Driveways        | • Basements                           |
| • Redi-Mix & Insulated Foam Poured Walls | • Sidewalks        | • Fireplaces                          |
|  | • Concrete Pouring | • Unlimited Masonry & Cement Supplies |
|  | • Garages          |                                       |

CALL NOW

FOR A FREE ESTIMATE  
**231.448.2242**

CARY CONCRETE LTD . 36520 KINGS HWY . BEAVER ISLAND, MI . 49782

## SCHWARTZFISHER

### STONeworks

*Quality Work Done on Time*

### EXCAVATION

- Site Clearing
- Driveways
- Basements
- Septic Systems
- Pump Back Systems
- Screened Top Soil

### MASONRY

- Block Work
- Flat Work
- Rock Retaining Walls
- Chimneys
- Stone Work
- Fieldstone Courtyards

### WELDING

- Mig
- Tig
- Aluminum
- Stainless Steel
- Plasma Cutter
- Steel Fabrication

DAVID SCHWARTZFISHER, OWNER  
27540 BARNEY'S LAKE ROAD, BEAVER ISLAND MI 49782

**(231) 448-2706 OR 448-2102**

# contents

NOVEMBER 2011



News from the Townships .....	4.
I'm wearing a New Hat .....	8.
One Hundred Years Ago .....	12.
How about a bag full of Candy? .....	16.
What's now Fair Game .....	16.
<i>Semper Paratus: Always Ready</i> .....	18.
Empty Hangar .....	22.
Life in a Toy Store .....	25.
Blessing of the Pets .....	25.
On This Date .....	28.
The other side of the bay: Little Sand Bay .....	30.
Arts Grants Available .....	30.
A Group Hug helps the Grieving Process .....	35.

## Beaver Beacon

the Island Monthly since 1955

*published by*

Paradise Bay Press

Beaver Beacon

Box 254, Beaver Island, MI 49782

(231) 448-2476

[www.beaverbeacon.com](http://www.beaverbeacon.com)

*editors/owners*

Jeff Cashman

[jcashman@beaverisland.net](mailto:jcashman@beaverisland.net)

William Cashman

[wcashman@beaverisland.net](mailto:wcashman@beaverisland.net)

*contributors*

Larry Barrett

Joyce Bartels

Larry Hansz

Amy Hubbell

Leonor Jacobson

Phyllis Kayne

Skip McDonough

Peggy Moy

Antje Price

Pat Rowley

Isabel Soden

Don Snyder

Rick Sutermeister

Lois Williams

Connie Wojan



The Beacon welcomes Island Stories, Articles, Photos, and Letters to the Editor. Thanks to all who call & email with news!

Gat Cole and friends near Nomad (Ralph Rutt at far left)

Gat Cole and his wife Julia at Nomad, where she raised canaries



## ROBERT'S JOHN SERVICE, INC.

**Doing Quality Work  
for over 18 Years**



### Licensed and Insured

- ✓ Plumbing
- ✓ Heating
  - Radiant In-floor Heat / Hydronic
  - Forced Air
  - Geothermal
- ✓ Water-right / Water Conditioning
- ✓ House Opening / Closing
- ✓ Vac-u-flo / Central Vacuum Systems
- ✓ Great Lakes Hot Tubs dealer — sales and service. Please call for a quote.



**ROBERT'S JOHN SERVICE, INC.**

**(231) 448-2805**

## BURRIS MASONRY

BRICK, STONE, AND BLOCK;  
THAT'S HOW WE ROCK.  
(231) 448-2213.

## MacEachmharcraig Construction



when you want to deal with  
someone you can trust, there's

**Dan McCafferty**

license # 2101179333  
26275 McCafferty Lane

**231-448-2238** dansarahoct9@tds.net

"A lifetime in construction has taught me the value of  
honesty, communication, and dedication to craftsmanship."

## R. Gillespie Enterprises

P.O. BOX 217 • BEAVER ISLAND MI 49782

**231-448-2577**



Excavating \* Road Building  
Contracting \* Licensed Builder

**WWW.GILLESPIEENTERPRISES.COM**

Live harbor webcam at [www.BeaVerIslandRealty.com](http://www.BeaVerIslandRealty.com)

## 4. NEWS FROM THE TOWNSHIPS

### St. James Township

The Beaver Island Association requested copies of the reports delivered by James White, manager, and Olivier LeCerf, advisor, about the possibility of introducing a reservation system at the Municipal Marina.

Peter Igoe suggested a five-step process he thought might result in more equal taxation between the townships:

1. Early in the 2012/2013 budget process, next spring, representatives of both townships jointly meet with the commissions overseeing the operations of the Beaver Island Fire Department, EMS, the Transfer Station, the Beaver Island Historical Society, and the Township Airport and agree on a budget framework for each of these operations.

2. When preliminary budgets have been established, the township supervisors will organize a joint public meeting to review the budgets. This meeting to be held in early July to allow attendance of a high proportion of property owners.

3. After hearing and responding to public comments, the townships will make adjustments and then jointly approve budgets for each of the organizations.

4. Based upon final budgets, an Island-wide minimum mil rate will be established.

5. If either township, does not adopt at least the established Island-wide minimum mil rate, then a public meeting will be convened to inform taxpayers of the failed result of this process. In addition, the budgets of the affected organizations will be reduced to the level funded by the final township mil rates or operations allocations.

The supervisor did not think this approach would succeed.

Pete Plastrik asked that the Town Board approve Jeff Powers as a replacement for Ivan Young as the Wildlife Club representative on the NRESC, which it did.

The Office of Emergency Management requested the Township apply to be part of FEMA's three-county Hazard Mitigation Plan

The Airport consultants approved the land-clearing at the west end of the main runway.

The Board approved asking for bids to reroof the Town Hall with red asphalt shingles.

The NRESC By-laws, revised in July and approved by the NRESC members, were approved by the Board.

Sarah McCafferty announced that she was going back to school and would be leaving the Island. She suggested the EMS and BIRHC be combined, and submitted a list

## Beaver Island

### Financial Center

Providing local  
service to Beaver  
Island

Property & casualty  
insurance for your home,  
auto, boat & business

Fixed-rate real estate  
mortgage  
loans



Office opening soon in the lower level of the Ed Wojan Realty office  
P.O. Box 117 — 26300 Back Highway  
Beaver Island MI 49782

Call Bill Kohls at 231.448.2150 — [bifc@tds.net](mailto:bifc@tds.net)



of advantages (improved training, coordination, cost savings) and issues to consider (millage, legal). The supervisor said that an Emergency Services Authority had been created as an oversight mechanism for the Fire Department, Health Center, and EMS, to qualify for a USDA grant for the East Side Fire Hall, but had never been empanelled; this matter would also have to be studied. The Board agreed to get a legal opinion on this matter.

Don Vyse asked for permission to apply for two grants for the exterior renovation of the Whiskey Point Light Tower: for \$6,000 from the Charlevoix County Community Foundation, and for \$40,000, the limit, from the Michigan Lighthouse Assistance Program (license plate surcharge). (When it was learned the next week that the limit was raised to \$60,000, this request was to be amended.)

#### Peaine Township

The Peaine Board approved Adam Wirth as a new member of the Planning Commission, and accepted Jeff Powers as a replacement for Ivan Young as the Wildlife Club representative to the NRESC.

The Board approved taking part in FEMA's three-county Emergency Mitigation Plan, which will not cost

anything but make available additional layers of help.

The Board and audience discussed the possible combination of the EMS and the BIRHC. The supervisor suggested forming a task force to study this matter, consisting of members from both organizations as well as others who have relevant experience, such as Don Fix, Brad Grassmick, and Barb Murphy, but the audience did not support this suggestion.

Donna Kubic, BIRHC manager, thought nothing should be done until the BIRHC Board approved investigating the possibility.

It was suggested that both townships do not need independent legal opinions and that Peaine should save money by waiting to see the opinion being obtained by St. James.

The supervisor mentioned the Emergency Services Authority approved on April 11, 2002 but not acted on; the required 501c3 status was never sought, and no appointments were ever made. Joe Moore said he was the head of the EMS at the time, and was flabbergasted that no one had ever mentioned this Authority to him.

After much discussion it was agreed that this was a complex issue of great importance, which would take time and care to thoroughly analyze.



## Oak Woods

Condominiums  
& Rentals

*formerly Laurain Lodge*

- ◆ Fine accommodations known for hospitality, quality, comfort and convenience for business or pleasure.
- ◆ Fully furnished housekeeping units with TV  
1 or 2-Bedrooms; king, queen, twin beds available
- ◆ Grand deck, grills, separate children's play area, campfire.
- ◆ 12-Ft. aluminum rowboats on inland lakes for fishing, sightseeing (included with each room)
- ◆ Fresh, spacious rooms, pleasant gardens, wooded views.

Relax. Let the hospitality at Laurain Lodge help you enjoy Beaver Island. It's why so many return year after year.

Visit our website to see pictures: [www.OakWoodsCondominiums.com](http://www.OakWoodsCondominiums.com)

Call today for reservations or information on island activities

**Phone (231) 448-2099**

38085 Beaver Lodge Drive, Beaver Island, MI 49782

Your Hosts, Larry & Theresa Laurain

Beautiful setting

Within a short  
walk to:

Shopping  
Dining  
Public beach  
Playground  
Hiking  
Museums  
Tennis courts  
Library

Daily morning  
coffee & donuts



*Your Port of Call on  
America's Emerald Isle*

**Deluxe Motel Units  
and Two bedroom Condominiums  
with Full Kitchens.**

**Located next to the Boat  
and Ferry Docks.**

**Overnight or Weekly  
Swimming Pool, TV**

**For Reservations Contact:**

**Harbor View Motel**

**P.O. Box 104 Beaver Island, MI 49782**

**(231) 448-2201**

**[harborview@tds.net](mailto:harborview@tds.net)**



**[WWW.HARBORVIEWBEAVERISLAND.COM](http://WWW.HARBORVIEWBEAVERISLAND.COM)**



✓ Licensed and Insured  
Island-based Business

✓ Quality, Efficient, and  
Professional Service

✓ Electrical, Voice & Data

✓ Residential & Commercial

✓ Plus, we're nice!

**231-448-2093**



## 6. HAIKU FOR YOU HERE IN THE VALLEY...

*(In the Northern Hemisphere during September and October, the Pegasus constellation can be seen near the big dipper. In Greek mythology Pegasus was a white winged horse.)*

woodchuck waddles to  
her winter den, hibernates;  
bare limbed trees shiver  
big dipper slides, hangs  
low at the bottom of the  
night sky....slips away  
four cedars, squared  
by wind, lean together, share  
secrets, gossip, jokes  
October ascent,  
maple trees below ablaze;  
a yearning to stay

—Phyllis Kayne

## THANKS

We really need to thank Joe Moore for putting everything into motion to take Janet by Coast Guard helicopter off the Island in late October. We also want to thank all the paramedics, EMTs, and folks at the Health Center.

The people of Beaver Island have been so caring and kind, showing their concern and giving such great hugs.

We especially want to thank Pam Moxham for going with Larry to the hospital in Petoskey and taking so much time with Janet, and our great good friend Gene Masta; no words can ever express our gratitude for everything you've done for us.

We love all the people of Beaver Island! Thank you!

—Janet Rasmussen, Ruth Ann Rasmussen, and Larry Scholl

Here in the valley nothing is known of them.  
No one has heard of them, here by the river.

But in high villages, crowned by cedars,  
There are some who have seen them.

The old men have glimpsed them  
Briefly, like deer, in the fallen timber  
Just under the tree line.

They do not live there, they say,  
But much farther, after the trees yield to aloes  
And the aloes to mosses and lichen,  
Still higher, they live in the rock cliffs.  
High above glaciers  
They live with the chamois and the white panthers  
That, driven by hunger, come up for the chamois.

Not one knows their language  
None who approached them has ever come home again  
Those who went up to meet them have never returned.

They are dead or enslaved, the villagers say -  
The young men and women.  
But the old men say, no  
They have chosen to stay  
And he who has never come home sleeps now  
Warmed in his cold cave by a compassionate body  
Or wakes, to the touch of his love,  
To watch with her all day long  
The chamois and some times the panthers

All day the slow creep of the glacier  
And, far below, the clouds in our valleys.

Tomorrow I leave for the village  
I shall spend some days there among the old men  
A few days, not many  
After that I go up through the cedars and mist to the fallen timber  
Then I go to the glacier.

—Larry Barrett

## IN MEMORY: VIRGINIA ROUNDTREE

Virginia Roundtree, 94, of Charlevoix, died October 24, 2011, at home. She and her husband Lyn moved to Beaver Island in the early 1960s, purchasing the McRea house (now Bill Hirschey's). The home, kiddy-corner

from the Beaver Island Lumber Company sawmill, had housed one of the executives, and then was remodeled for other uses, both residential and commercial. The Roundtrees continued the remodeling, employing many local

carpenters. They added a guest house for Virginia's parents, who made the Island their final home. After Lyn passed away Virginia moved to Charlevoix in 1971, buying one of the elegant stone houses on Park Avenue.

## ROLAND McDONOUGH

Roland P. "Mac" McDonough, whose parents had moved from Beaver Island to Escanaba, found peace on Sept. 23, 2011. He was 81. He was the loving husband of Barbara (Gallagher) for 55

years; loving father of Pamela Bastian, Gary, Sandra Moore, Patrick, Dan, Stephen, and Mark; proud papa of nine grandchildren, five great-grandchildren, and two more on the way; dear brother

of Robert McDonough of Escanaba, and Cheryl Way. He is further survived by other relatives and friends. Roland's career spanned 30-plus years for the Chicago Northwestern Railroad.





# Ed Wojan Realty

Your Key to BEAVER ISLAND

Edward B. Wojan – Broker

26300 Back Highway

P.O. Box 86

Beaver Island, Michigan 49782



231-448-2711 or toll free 1-800-268-2711

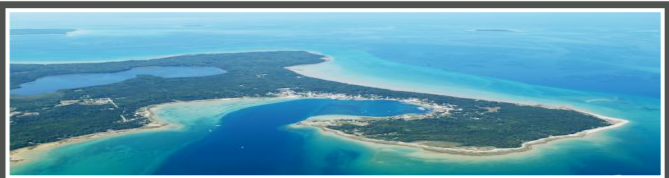
view on our web site at: [www.edwojanrealty.com](http://www.edwojanrealty.com)



## ATTENTION HUNTERS!

### Perfect, PRIME! 20 Acre Hunting Camp Parcel

This parcel is on the north side of Greene's Lake Road with  $\frac{1}{4}$  mile of State land along its east line and 330 feet of State land along its south line. The address is **29015 Greene's Lake Road** (on the Island map you can see part of the private driveway from Greene's Lake Road north to the building site right near the east line of Section 31 - just a little bit northeast of Greene's Lake) With this 20 acres you can draw deer off the thousands of acres of State land east, southeast and southwest of your camp (look at the 2006 second Wojan-Cashman map of this area) This property and a lot of the State land around it has a lot of huge red oak trees that draw deer into this area. An even more important part of this offering is the fact that this acreage has underground power and telephone lines up to near its north end where a small clearing has been made with a septic system put in; a good deep well is in place and a good foundation for your hunting cabin is in with trusses over it. Raise the roof and put in walls and you have your structure. PLUS! there is a large, fifth-wheel trailer on site near the foundation that has water hooked to it and is hooked to the septic system. The trailer needs cleaning up but you could come and stay in it later this fall. **Better yet**, the north side of this parcel has a view of the big clear cut done by the State a year or two ago that is absolutely full of deer. Four years ago this set up would have been offered for a minimum of \$100,000. The foreclosure company will finance this property with only 10% down and \$500 per month payments. The best part of this offering however is the asking price. Because it was a foreclosure the REO Company that is selling it is asking only **\$ 49,900.**



ANDERSON AERIAL PHOTOGRAPHY



e-mail [aap.mba@charter.net](mailto:aap.mba@charter.net)

phone 231-947-4598

## Ron Wojan - General Contractor Inc.



**Q**uality Built Homes with attention to detail and customer satisfaction. We build a variety of projects from small cabins to Lodges. Ron has over 30 years experience building homes on the Island.

[ronwojangc@tds.net](mailto:ronwojangc@tds.net)

231-448-2400

36869 Kings Highway . Beaver Island Michigan 49782



We like to

## Move It Movers

Trucking & Maintenance

PO Box 110

Beaver Island MI 49782

Phone: 231 448 2670

Dave Avery

## ST. JAMES BOAT SHOP

BEAVER ISLAND,  
MICHIGAN

EST. 1985

231-448-2365

231-838-2883

BILL FREESE & DAN BURTON / BUILDERS

[WWW.STJAMESBOATSHOP.COM](http://WWW.STJAMESBOATSHOP.COM)

EMAIL: [STJAMESBOATSHOP@YAHOO.COM](mailto:STJAMESBOATSHOP@YAHOO.COM)



## 8. I'M WEARING A NEW HAT

**I**t's funny where life takes you. One day you could be a caregiver, the next an advocate, a hospice volunteer or just a friend who needs you. Now I find that I am a Canine Hospice Worker.

When you stop to think about it, when you own a pet you are inevitably faced with end-of-life decisions about that pet. Probably the biggest decision is when to intervene. I have struggled with it, you have too. We watch our pets grow into old pets and see their limitations. We observe them spending more time sleeping and not participating in activities they once loved. They can't jump into the car any more and they start to have accidents in the house. If they start to have pain we begin to put the pieces together and see they may need assistance. One of my friends remarked that they want to leave their bodies before we want them to.

A few years ago when my friends Marilyn and Gary were about to lose their lovable Gordon Setter I knew they were having problems deciding

whether or not to put him down or let nature take its course. I had stopped by once or twice to talk with Marilyn about the situation and listened to her reluctance to intervene. I suggested she tune into what her Vet was telling her and how her dog was acting. The Vet told her the dog was not in pain and encouraged her to wait a bit... I agreed. The next day, however, I saw Gary's truck in front of the house at two o'clock in the afternoon (highly irregular for a man working construction). On a whim I walked up to the door and knocked. Marilyn answered the door and called out to Gary, "Hospice is here." We sat in the living room and talked about Thor. There were no surprises about where this was going. Thor was dying. By the time I left they had decided not to make an intervention. The next day he wandered into the back yard with Marilyn following. She engulfed him in a big hug and he died in her arms.

I didn't think my role as hospice worker was that significant until I

needed to put my experience to work again. My friend Sally's dog was developing debilitating problems. Charlie was a character! Rescued by Sally's husband Harold several years ago, he became a fixture in their home even after Harold died. He was what I described as a reverse Dalmatian. He was black with white spots, had a Labrador disposition, and liked to bark... he was in fact mouthy! We all liked Charlie in spite of his quirks and misbehaviors.

Sally and I, and sometimes other women, meet on Wednesdays for wine and conversation and call it "Wednesday Club." It became painfully apparent that Charlie was "going down hill" at a fairly fast pace. We talked about the inevitable. We actually talked about the end-of-life decisions one faces with aging dogs. I gently suggested she think about where Charlie would be buried or whether or not he would be cremated. She finally decided that a burial would be more appropriate but couldn't choose a site. When she finally selected a place

# ***Stoney Acre Grill***

**\*Seafood\*Steaks\*Salads\*Mexican\*Sandwiches\*Vegetarian\*  
\*Pastas\*Mediterranean\*Appetizers\*Pub Fare\*Specials\***

*Thurs-Baby Back BBQ Ribs \* Fri-Yellow Lake Perch \* Fresh Whitefish Daily \* Daily Specials plus full Menu*

***High Standards, Great Quality, Low Prices***

## ***Donegal Danny's Pub***

***Neighborhood Tavern with Island Charm,  
Vast Selection and an Emphasis on Service***

***Six TV's, IPOD, Wii, Darts,  
Friendly Bartenders, Great Prices***

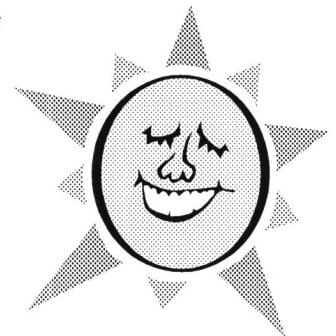
*Music most weekends...never a cover charge or drink price increase*

***Open 7 Days***

***448-3000***

***Stoney Acre Grill &  
Donegal Danny's Pub  
are For Sale***

***Interested Parties Please Contact  
Liam & Marilyn (231-448-3125)***



### ***Lunch***

***Mon-Sat  
11am-2pm***

### ***Dinner***

***Mon-Sun  
5pm-9pm***

***\*Carry-Out  
Available  
\*Rides  
Available***

***One Mile South of  
The Boat Dock Off  
The King's Own Hi-Way***

***448-2560***



near their home I again gently suggested she contact our mutual friend to dig a grave with his front-end loader.

Several weeks went by and Charlie had spurts of "wellness" as is often the case. It became more apparent that he was in pain. Sally was having problems deciding when to make a decision to put him down. I explained that there would be a "sign" that would help her make up her mind.

A few weeks ago I got a call about nine in the morning. Sally had begun to see splatters of bright blood on the floor and walls—surely the sign she needed. She had called our local Veterinarian, and he would be over at 3 p.m. to put Charlie down. She asked if I would be there to assist. Of course I agreed.

Charlie and I had become friends and that was good because when Jeff arrived Charlie was not a happy camper. I had already placed a quilt, one of Sally's mom's old hand-quilted ones, on the floor in the porch. I grasped Charlie by the collar and calmly told him it was going to be okay, that Jeff

was going to help him relax. Jeff entered the porch and quickly injected a sedative that calmed him almost immediately. I gently helped him lie down and stroked him about the head and neck, and told him what a good boy he was. When Jeff administered the final injection he was completely relaxed and slipped into eternal sleep very peacefully. With help from my husband, Jeff, and our friend Larry we wrapped him and placed him on the loader that gently lowered him in his grave.

When the final earth was smoothed over his grave we retreated to the house to toast his life over a cold beer—Charlie was definitely a cold beer sort of dog—no champagne for him. Sally told funny stories about Charlie and we laughed and cried, but mostly we were grateful that we could help him out of his wrecked body to a place of peace. So long Charlie, AKA Chuck.

Dedicated to my good friends  
Harold and Sally Lounsberry

—Lois Williams, 9-25-2011

The Michigan education guidelines require students to take a foreign language, so the BICS tried to find a teacher but could not. The problem was solved via a unique combination of proven on-line instruction blended with weekly video chat sessions with a certified teacher in the Pellston Public Schools, who will visit once every three weeks. When he's on-site, he will do Spanish lessons with the K-8 students.

The head count is now 69—just below the 50-year average of 72. Attendance peaked in 1995 at 101, after reaching a low of 53 in 1976.

## STOCKINGS

The Island school has launched a program to help provide Michigan presents for soldiers on active duty, in conjunction with the National Honor Society. Islanders are asked to provide stockings stuffed with personal hygiene items and goodies, or to sponsor a stocking by donating forty dollars to the school, appropriately marking the check.

# BEAVER ISLAND COMMUNITY CENTER

*At the Heart of a Good Community*

Fall Hours

Monday–Friday 9:30am - 6pm

Saturday 9:30am - 9pm . Closed Sunday



phone: 231-448-2022

email: [bicommunitycenter@tds.net](mailto:bicommunitycenter@tds.net)

web: [www.beaverislandcommunitycenter.org](http://www.beaverislandcommunitycenter.org)

Check out upcoming Events, Movies & Activities at [www.beaverislandcommunitycenter.org](http://www.beaverislandcommunitycenter.org)

### John Deere "Gator" Raffle Drawing!



**Saturday, November 19<sup>th</sup>, 3pm** at the Shamrock Bar & Restaurant  
TIME IS RUNNING OUT! Get your chance to win today! Cash, checks & credit cards accepted, call 448-2022!

### Holiday Hilarity 3!



**Friday, December 2<sup>nd</sup> 8pm & Sunday, December 11<sup>th</sup> 1pm.** Let the Beaver Island Comedy Group keep your season merry with another rollicking original production! Don't miss this holiday fun! Tickets: \$12 Call 448-2022 to reserve!

### Irish Christmas in America



**Sunday, December 18<sup>th</sup> 6pm.** Produced by Oisín Mac Diarmada of award-winning Irish group Téada including top Irish musicians, singers and dancers in an engaging performance rich in history, humor and boundless energy. This 2011 tour features Lumière—one of the most talked-about vocal acts to emerge from Ireland in recent times. Join us for a unique Beaver Island Holiday experience! Tickets: \$30

The Community Center will be closed Thursday, November 24<sup>th</sup>.

**Have a safe and Happy Thanksgiving!**

**December 11<sup>th</sup> – Sunday Dinner! 11am – 1pm.** Join us for a fun Holiday dinner and a special 1pm matinee performance of "Holiday Hilarity 3" by the Beaver Island Comedy Group! Great food, company and fun for the whole community! Call 448-2022

**Movies** – Saturday **DOUBLE FEATURES!** Kids/Family/Youth Matinee 3 pm Youth &/or Adult 7 pm Check the Center for updates



Second-year Sponsor

Special thanks to our sponsors and supporters: Shamrock Bar & Restaurant, Beaver Island Boat Company, Brothers' Place, Dalwhinnie Bakery & Deli and Hogarth's Pest Control!



Business supporter

Cookies, Candies, Beverages, Frozen Treats, Hot Dogs & Sandwiches, WiFi Internet, Computers, Games & Pool!





## IN OUR STEAD

Staff sergeant Mike Cherette returned from Afghanistan on October 20<sup>th</sup> for a two-week R & R leave. He is the son of his proud mother Donzell Anthony, and the grandson of Alvina Napont, both of Beaver Island. Thanks to help from Veterans' Affairs Donzell was able to spend a few days visiting with him in Iron Mountain. He returned to duty for another six months shortly thereafter, with wishes for his safety from his family, who continue to hold him in their thoughts and prayers.



### St. James Marine Co.



Serving Beaver Island and the Great Lakes for your hauling and freight needs. Delivery to your location available.

St. James Marine Co. hauls:

- general freight and cargo
- heavy equipment
- stone products
- cement products
- topsoil
- boats
- livestock
- storage containers
- building materials
- garbage dumpsters
- modular homes
- automobiles
- trailers
- semi-trailers
- junk cars
- and much more!

In addition, St. James Marine Co. executes on-water fireworks shows, barge hauling-services for logging, commercial assistance towing, dust control, salvage search and diving, working boat repair, dredging, marine improvement and dock repair.



**You call, WE HAUL!**

Phone: (231) 448-4000 Cell: (231) 838-0254

**[www.stjamesmarine.com](http://www.stjamesmarine.com)**



## READER PHOTOS

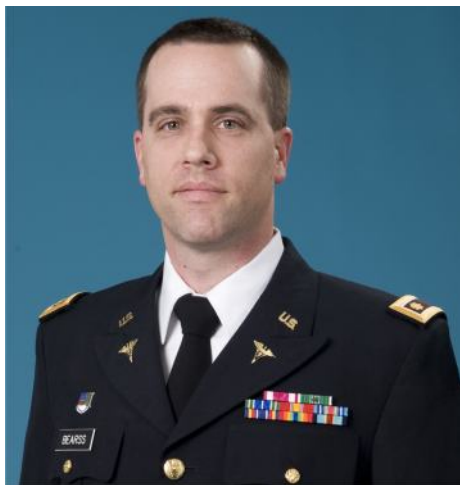
Thanks to Peggy for sharing the great photo (top left) taken along Sloptown Road. This young bird watched her carefully as she rolled her window up and down, deciding she was a friend and allowing his portrait to be snapped. Thanks to Rick (top right) for showing the splendor of reflections on the Miller's Marsh Ecotrail.





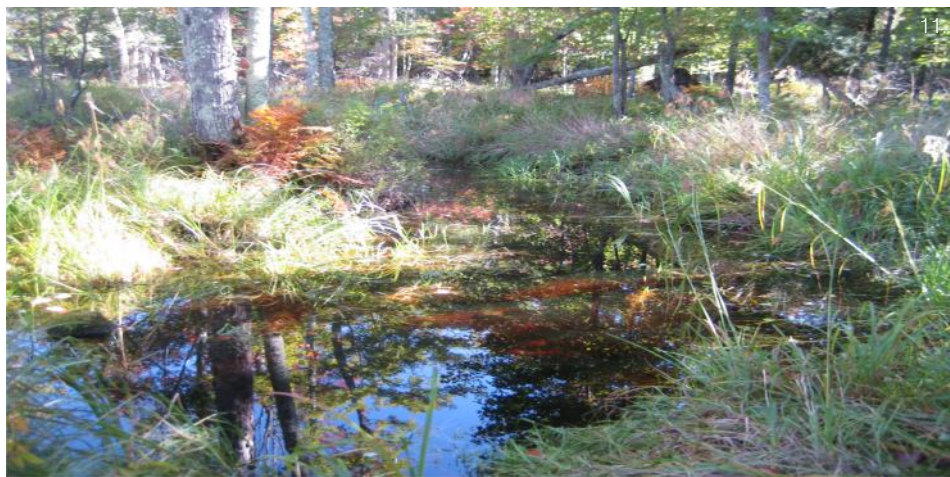
## NEW DIPLOMATE

Major Jeremy Bearss, a veterinarian serving in the U.S. Army, has just successfully passed the 3-day certifying examination in Veterinary Anatomic Pathology following a 3-year residency at the Armed Forces Institute of Pathology and is now a diplomate of the American College of Veterinary Pathologists. Upon reaching this career milestone, he was assigned as the Training Officer for the Armed Forces Joint Pathology Center. Among his many responsibilities in this new



assignment, he will be instructing Army veterinary pathologists in the Department of Defense Veterinary Pathology Residency Program.

Jeremy is the son of John and Carole Bearss and resides with his wife Genny and daughter Lorelei in Silver Spring, Maryland. Beaver Island is close to his heart, and is his official military home of record.



FRESH AIR AVIATION, INC.  
*Fly Right!*

*Experience the Difference!*

*Surround Yourself With Service, Style, and a Smile.*

### **ADVANTAGE FARE ALERT!**



#### **Thanksgiving Weekend Travel Islander Special**

Wed Nov. 23<sup>rd</sup> Seats from Beaver Island to  
Charlevoix only are \$25!

Sunday Nov. 27<sup>th</sup> Seats from Charlevoix to  
Beaver Island only are \$25!

Don't forget our Winter Car Care Advantage Service - we have your car warm and ready when you get off the plane. It doesn't get much better than that!

**Great Feature! - Car Valet Service to or from Boat Dock**

*Fly Right!*



Phone: 231-237-9482 or 888-359-7448  
Beaver Island Local: 231-448-2089  
[WWW.FRESHAIRAVIATION.NET](http://WWW.FRESHAIRAVIATION.NET)



06918 Old Norwood Rd.  
Charlevoix, MI 49720  
Located next to the Ford Dealership off US 31.



*Charlevoix Courier* Wednesday, November 1, 1911 **Local News Briefly Told:** "The *Beaver* laid to port Saturday on account of high winds."

*Charlevoix Sentinel* Thursday, November 2, 1911 **Beaver Island News:** "Fr. Malone went to Charlevoix last week."

"Miss Mary Cull is home visiting her mother."

"J. Edwards of Cheboygan, is here after peas."

"Miss Hattie Gallagher went to Charlevoix last week."

"Mrs. Myrtle Young of Charlevoix is here on business."

"Wilbur S. Burns of Grand Rapids was here last week."

"Miss M. Gallagher of Chicago, is visiting her parents."

"Mrs. Albon Smith of Charlevoix, is here visiting her parents."

"Gus Kitzenger, Pres. of the B. I. L. Co., is here on business"

"Mrs. D. R. McDonald went to Charlevoix on business last week."

"Mrs. M. J. Bonner returned home from a visit to Milwaukee."

"Miss Martha Gallagher returned home after a week's visit in Charlevoix."

"W. E. Stevens returned home after a visit to Chicago and other points."

"M. Schrider, Standard Oil Co. agent of Grand Rapids is here on business."

"Miss Ann O'Malley of Chicago, who spent the summer with her sister, returned home."

"A. L. Stirling returned home from Ludington where he was after men for the B. I. L. Co."

"A. T. Stewart of the U. S. Fish Hatchery is here starting the men to gather trout eggs. Ed B. Gallagher is in charge at the Island."

"John M. Sweeny of Detroit, is here looking up fruit lands."

"O. P. Burgess, J. C. Funnaway, J. H. McLean, R. E. Thompson, J. E. Fleming and R. McLean of the State Tax force are reassessing Peaine twp." (Note: Nov. 1 - 2 first snow 6 - 12" stays 6 days, 28 - 30 degrees. F. Protar)

*Charlevoix Courier* Wednesday, November 8, 1911 **No Beaver Island related news.**

*Charlevoix Sentinel* Thursday,

November 9, 1911 **Local News:** "Beaver Island as been 'up against it' lately. Owing to gales all around the compass, they have had but one Charlevoix boat in a week."

"Capt. John McCann arrived at St. James from Sturgeon Bay, Wis., with the rebuilt tug *Margaret McCann*. The tug came out as good as new in all respects."

"Commercial fishing is looking up, some very large catches of trout being reported here and at Beaver Island. But the bottom seems to have knocked out of the fish market, fishermen receiving but three and one half cents per pound for trout. Spawn gathering has commenced at the Island and the fish commission people here hope to get a large proportion of the required number of eggs before the closed season November 20<sup>th</sup>."

"Owing to the high south-west gale that prevailed Monday, the streamer *Beaver* did not make her Island trip, but went to Petosky after one hundred barrels of flour for St. James dealers."

**Beaver Island News:** "Miss Margaret Douglas went to Pa., to visit a sick brother."

"C. Boylan, the agent for the Saginaw Hardware Co., was storm bound here three days last week."

"The L. A. O. O. H. gave a banquet Sunday. All had a fine time. Miss Mary Cull rode the goat."

"Mrs. John McCann is on the road to recovery from a serious illness."

"Sheriff Robbins was here on business last week."

"Chas. William and wife, of Chicago, are visiting Hugh T. Boyle."

"Michael Boyle of Traverse City, is visiting relatives here."

"Ed Pratt, Oscar Martin, Wesley Rousehorn and Robert Rounclas (sic), are hunting in the upper peninsula."

"Born to Mr. & Mrs. Peter D. Gallagher, a son."

"Mike McCafferty and Hugh O. Boyle went to St. Ignace on business Tuesday."

"Mrs. Chas. Allers returned home from Manistique this week." (Note: Nov. 5 - 11 thunderstorms, lots of rain, 36 - 50 degrees; Nov. 13 - 15 snow, 26 - 12 degrees. F. Protar)

*Charlevoix Courier* Wednesday, November 15, 1911 **Local News Briefly Told:** "Archie Lafrineire (sic) of St. James was in the city Tuesday."

"List of Jurors: Wm D. Gallagher, Peaine; George Stevens, St. James."

*Charlevoix Sentinel* Thursday, November 16, 1911 **Local News:** "The small schooner *Waleska*, of St. James, came over last week in tow of the tug Ryan, for a full load of baled hay for the Beaver Island Lumber Co."

#### Front Page Article:

#### "THE FISHER FOLK

#### GOOD CATCHES FROM FALL SETTINGS

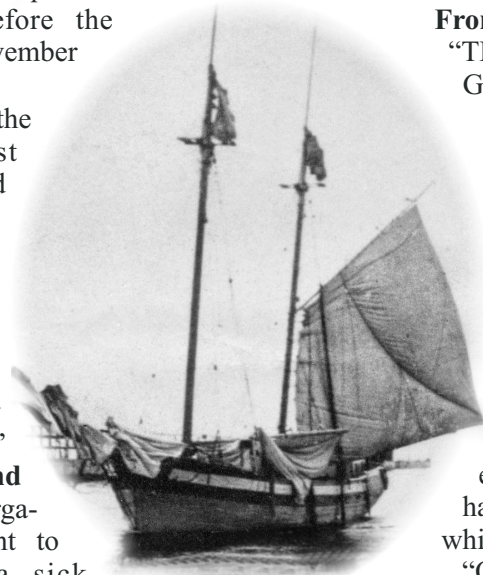
#### TROUT BY THE TON

"The trout are 'on' as the commercial fisherman say, and the good catches began a week ago. Were it not for the low market, which nobody can explain, the fishermen would have a harvest this fall worth while."

"Over at St. James the tug *McCann*, last Thursday, brought in three tons of trout, and on Friday, the Booth Company received a consignment of six tons of fish mostly trout. Next in importance are the perch shipments, which come over from the Island by the ton."

"Spawn harvest is on both at Beaver Island and here and superintendent Stewart, of the local hatchery, says that results are satisfactory. Millions of trout eggs are being shipped to the Northville hatchery, and the work will continue as long as the open season lasts - November 20<sup>th</sup>, and longer if the required number of eggs are not secured before."

"In one lift last week, John O'Neill, of this port, with the tug *Parmelee*, brought in 4100 pounds of trout - more than two tons."



Left: the *Waleska*



"And down at Gloucester, Mass., the Charlevoix contingent, who went to the coast last summer, are doing well. John Nordrum reports a 'lift' of 10,000 pounds of cod and pollock, with a market price of from 2 to 4 cents per pound. Down there the gill nets are a revelation to the 'natives.'

"But, coming back home again we remark that a whitefish now is a luxury. They are not 'on' and very few are caught. The big trout catch proves, beyond a question the efficiency and value of the work of the fish commission. The hatcheries are doing good work.

"Well, the closed season begins next week, and then many an unhappy half hour for the wardens and the fishermen—some of them."

**Inside page article:** From Beaver Islands Apples Come to Show

From the *Grand Rapids Press*

"That the fame of Michigan fruit land and apple show penetrated even the remote places was shown today when a delayed shipment of display apples from the Beaver Islands arrived. Accompanying the big box was a letter explaining that the Islands wanted to show that Michigan mainland did not monopolize the fruit industry.

"It also was explained that owing to gales and heavy sea the regular Beaver Island boat from Charlevoix had not been able to make St. James harbor and this was the cause of the failure of the fruit to arrive on time. The display speedily was put on exhibition, however. There were eighteen plates of apples. Some of these came from orchards planted in the days of Mormon supremacy when the islands were a county in themselves and knew no law but that of the notorious King Strang.

"Also among the names of exhibits is that of Gallagher, a descendant, no doubt, of that pioneer among the daring Irish of the islands who dared oppose Strang's rule and who revenged himself for some of Strang's outrages, by shooting and killing him. Gallagher gave himself up, but his act apparently was considered one of public benefit and he never was punished.

"The Beaver Islands boast of some of the best soil in Michigan, as do the Manitou Islands. The fruit, however,

shows the lack of proper care. Until the Western Michigan Development Bureau sent a representative to teach the correct method of pruning, spraying, cultivating and harvesting, the trees had been permitted to grow wild. Among the exhibitors who sent fruit from the Island are: Daniel T. Gallagher, John O'Donnell, John W. Green, Francis McCafferty, Owen McCauley, Francis Roddy, Daniel Boyle and Messrs. Stevens and Tilly."

**Beaver Island News:** "Nell O. Gallagher returned to Chicago after a month's visit with her parents Capt. & Mrs. Owen Gallagher."

"Capt. M. J. Bonner went to Charlevoix and Petosky on business last week."

"The steamer *Buckley* unloaded two tons of coal for the lumber company this week."

"Supervisor Hugh P. Boyle went to Charlevoix on business last week."

"The steamer *R. C. Went* arrived with a load of merchandise for the B. I. Lumber Co."

"E. L. Smith, filer, at the mill returned to his home in Boyne City this week."

"Fred A. Smith, of the Petosky Grocery Co. Was here two days last week." (Note: Smith, Petosky appears in the *Hotel Beaver* register, Nov. 10, 1911)

"Mamie McCafferty, after a month's visit with her parents, returned to her home in Chicago this week." (Note: Nov. 16 - 18 blizzard, 24- 10 degrees F. Protar)

*Charlevoix Courier* Wednesday, November 22, 1911 **Local News Briefly Told:** "W. J. Gallagher is over here this week from St. James."

**From Beaver Island:** "Mrs. Charles Rhoda visited Charlevoix last week."

"Mrs. William Belfy visited Charlevoix last week."

"Miss Mamie McCafferty returned to Chicago last Saturday."

"Capt. M. J. Bonner made a business trip to Charlevoix last week."

"Dr. Armstrong from Charlevoix visited the Island professionally last

week."

"Miss Elizabeth O'Connor of Harbor Springs is visiting at the home of H. P. Boyle."

"Steam Barge *Buckley* and *Wente* brought in cargoes of coal and feed for the B. I. L. Co. this week."

"Mr. Peter O. McCauley has charge of Oscar Martin's barbershop during the latter's absence on a hunting trip."

"Miss Tillie Scheid returned from Marysburgh, Minn., last week. She was accompanied by her aunt, Miss Margaret Currie, who will make her home here."

*Charlevoix Sentinel* Thursday, November 23, 1911 **Local News:** "The steamer *Beaver* on her Thursday trip brought four tons of trout for Booth."

"One day last week the lightship on Lansing Shoal sprung a bad leak, and her captain pulled up his anchor and put the vessel under a lee at



Garden Island. He

went to St. James in his launch and reported to the lighthouse inspector. On his return to Garden Island the ship had disappeared, having been driven out by a shift of wind. She made St. Ignace, however, all right. The inspector located the tender *Sumac* in the straits and sent her after the ship, with orders to tow her to Charlevoix. Both boats arrived here Monday afternoon."

**Beaver Island News:** "Mary Johnson went to Detroit for the winter."

"Joe E. Gallagher was at Chalevoix on a visit last week."

"Miss N. E. Deak of Ludington, is here for the winter."

"Mrs. Pelkie arrived home Sunday after spending a week in Charlevoix on business."

*continued on page 14.*



14. **One Hundred Years Ago**, from page 13.

"Ralph Briggs of Elk Rapids, is spending the winter with his aunt, Mrs. F. Nackerman.

"Archie Lafinere (sic) is home for the winter."

"The hunters returned home from the U. P. They had good luck – Youngless had two deer – the rest one a piece."

"The Hart boat is a regular caller nowadays. The steamer *Beaver* made a trip Sunday. George Papin engineer on the *Ryan* went home to Charlevoix Monday."

"A. T. Stewart of the U. S. Hatchery was here looking after their interest in trout eggs."

"Dave Switzer brought a crew of men Sunday to work in his shingle mill."

"James Donlevy went to Charlevoix on business."

"Mr. Seaman, the soft drink man, of Charlevoix, was here on business." (Note: *E. R. Seaman, Charlevoix appears in the Hotel Beaver register November 10, 1911*)

"H. K. Balch, agent for the American Net and Twine Co. is here on

business." (Note: Nov. 19 - 27 *Fair Weather*; Nov. 28 *Big Storm. F. Protar*)

*Charlevoix Courier* Wednesday, November 29, 1911 **Local News Briefly Told:** "Frank Left of St. James is here with his tug *Little Matae* (sic), on business."

"H. P. Boyle, John Malloy, Barnie Gallagher and Joseph Floyd of St. James are here attending court." (Note: they had been arrested for "violation of the liquor laws", pled guilty, and were awaiting sentence.)

#### Page 1 Article

"AFTER LINGERING ILLNESS

Miss (sic) Ruth Bedford Well Known Here Passes Away

Was Seventy-six Years of Age and a Pioneer of This Section

"Mrs. Ruth Bedford, a pioneer of this section, died Monday morning at her home on Antrim street, after a lingering illness of several weeks.

"Mrs. Bedford was born in Westchester county, N. Y., November 30, 1834, moving from there to Beaver Island in 1850 where they spent their early days.

"She was married while on the Island to Thomas Bedford, June 8,

1853. To this marriage was born three children, Capt. Edwin E. Bedford, of Point Betsey (sic), L. S. S.; Mrs. Julia Cram and Harrison Bedford of this city. She moved to Charlevoix in May, 1884, and has resided here ever since that time. Her husband died May 5, 1889.

"Mrs. Bedford leaves one sister, Mrs. Albert Field of Eaton Rapids, and two brothers Capt. Harrison Miller of Frankfort, Michigan, and George Miller, of San Bernadino, California, to mourn their loss, besides the three children.

"Mrs. Bedford was a kind, loving mother and a friend to all and will be missed by the community at large.

"The funeral was held at the home this morning being largely attended, and many floral offerings showed the high esteem she was held. Interment at Brookside cemetery.

"The out-of-town attendants were Mr. And Mrs. W. A. Fields, of Eaton Rapids, Mrs. Gibson, of Petoskey, Mr. and Mrs. Edwin Bedford, of Point Betsey and Mrs. Albert Fields, of Eaton Rapids."

*Charlevoix Sentinel* Thursday,

We would like to thank our customers for one of the best seasons we have ever had. We are at retirement age and ready to change our lifestyle. It is with mixed emotions we announce

## DADDY FRANKS

Restaurant and Ice Cream Parlour

### Is For Sale

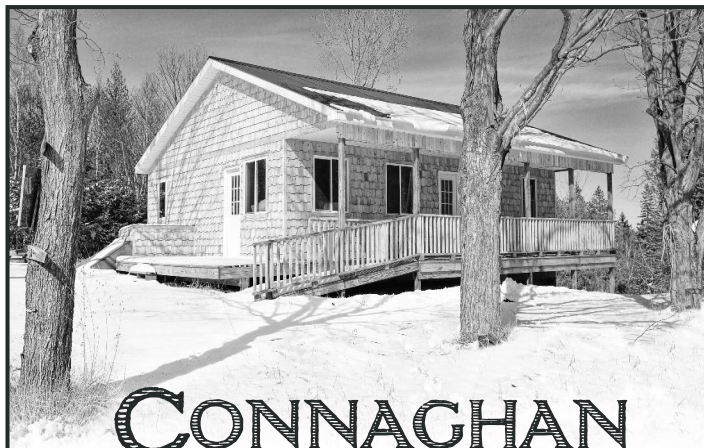
- well established seasonal business
- over 2/3 acre of prime downtown commercial property
- newly remodeled attached studio apt.
- all equipment, fixtures, and contents included in sale

**\$325,000**

negotiable land contract terms available  
minimum 10% down

Qualified interested parties can call

Nancy or Roger Sommer **(231) 448-2550**



## CONNAGHAN CONSTRUCTION

COMPLETE BUILDING AND REMODEL

ADDITIONS, GARAGES,

DECKS, PATIOS, PORCHES

KITCHENS AND BATHS, FLOORS AND MORE

FREE ESTIMATES

TONYCONNAGHAN@GMAIL.COM

231 448 2343

CELL 616 843 5381



November 30, 1911 **Local News:**

"James Gallagher, first officer of the steamship *Missouri*, was here over Sunday on his way to Beaver Island for a visit. He has a two weeks vacation after which he will go as mate of the steamer *Kansas*, of the same line, in her winter run between Chicago & Milwaukee."

"It begins to look as if Beaver Island was beginning to realize what it has lost in past years by neglecting to plant orchards. There is a good active awakening over across the channel, and next spring the Island folks will begin to catch up with the main land in this matter. M. J. McCann has 2,000 apple trees bound for setting, and the dock records show that there are 3,000 more there for others – all to be set out in the spring. It is really sad to think of what the Island has lost during all these years. There is no reason why Beaver Island should not equal either of the Grand Traverse peninsulas in production of apples. We verily believe the time is not very far distant when Beaver Island will be a conspicuous section of the Northern Michigan fruit belt."

**Front Page Article:**

**"DEATH OF MRS. RUTH BEDFORD**

"Mrs. Ruth Bedford died at her home on State street, this city, at midnight Sunday, after a protracted illness, in the 77<sup>th</sup> year of her age.

"Ripe in years, beloved by all her kin and respected by a large circle of friends and acquaintances, this good old lady has passed to her reward. Mrs. Bedford was a pioneer of the pioneers, having lived in Northern Michigan nearly all her life. Much of her early life was lived under troublous environments, from which she grew into womanhood true to herself and her family.

"Deceased was the mother of Capt. E. E. Bedford, of the Point Betsy life saving station; Harrison Bedford and Mrs. Julia Cram, of this city. Capt. Harrison Miller, of Frankfort, but now visiting in California, is her brother. She also has a brother George living in California, who Harrison is now visiting.

"She was born in Westchester county, N. Y., Nov. 20, 1834; was married in 1853, and moved to Charlevoix in 1881.

"The funeral was from the home yesterday (Wednesday) morning, and

was largely attended."

15.

**Beaver Island News:**

"Wilford O'Brien who went to Seattle, Wash., returned home last week."

"Will Pratt returned home after sailing all summer."

"H. Griffin and A. L. Rose of Cheboygan were here on business."

"J. P. Maloney of Chicago, visited his mother last week."

"Dan D. Gallagher is on the sick list."

"Tom P. Gallagher, Peter Boyle and Louis Gingress was at Charlevoix making final proof on a homestead."

"Mads Jensen went to Charlevoix on business. Robert Gibson went to Charlevoix on business."

"Wm. Valure, wife and family, of St. Ignace, is (sic) home for the winter."

"W. D. Gallagher, John B. O'Donnell and Geo. Stevens, are at Charlevoix as jurors this term of court."

"Lawrence Christian went to Naubinway for the winter."

"Capt. James O. Gallagher of Chicago, is home on a visit."

"Grace Mooney returned to Charlevoix after spending a few weeks visiting her parents."



# Island Airways

*With our friendly staff and our history of safe, comfortable, and competitively priced flights, we're ready to serve all your aviation needs. We offer Charter flights to a multitude of locations in the United States, as well as freight and passenger services to Beaver Island and Charlevoix. For more than 60 years we have been both Charlevoix and Beaver Island's committed aviation service provider. At Island Airways, you are more than just a passenger, you are a part of our family. Our airport services include maintenance, free wireless internet, rental cars, and much more.*

**1-800-524-6895** [www.IslandAirways.com](http://www.IslandAirways.com)





## HEY, KIDS; WHAT'S IN THE TRUNK?

Every year kids and parents alike grow excited as Halloween draws near

– the kids because there are rumors afloat that gobs of candy will soon be

passed out for free, and the parents because this special holiday gives them

## ATTENTION: BEAVER ISLAND DEER HUNTERS

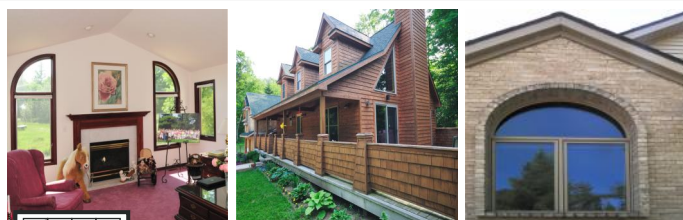
Welcome to Beaver Island for the 2011 Deer Hunting Season. This is the first year that Antler Point Restrictions are in place as we continue our efforts to increase the quality of the Deer Hunting Experience on Beaver Island and Garden Island. Our club's efforts to produce a detailed data set of observa-

tions and harvest information was crucial in obtaining this new management status for Beaver Island. Your help is needed to help us to continue and expand these record keeping efforts. You can help in the following ways:

1. Beaver Island Wildlife Club volunteers led by Jacque LaFreniere

will be available at the Boat Dock prior to your boarding the ferry to conduct Deer Biological data checks.

2. Complete a Camp Survey form available from the Wildlife Club, which will provide us statistical information on deer observations, and your harvest information on any deer taken.



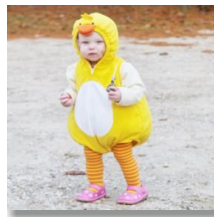
**McDonough Construction, Inc.**

State Licensed and Insured  
Certified in Lead Safety and Weatherization  
25 years of honest experience Quality craftsmanship  
New construction, remodels, additions, garages  
Construction Consulting

Contact Kevin B. McDonough Home: 231.448.3038 Cell: 231.675.5444







17.

an excuse to dress up in an costume they choose to show the next generation how

this important ritual should be done.

A second pleasure in recent years is

gathering at the Gregg Hall to show each other just how pretty we can be.

3. If you are unable to do either of the above, send an email photo of your deer with as much data as you can provide, such as: sex; antler points; diameter of antler beam at the base of the horn; if a doe, was she producing milk? These photos can be sent to any of the Beaver Island Wildlife Club Board

Members:

Jeff Powers [jfpowers@tds.net](mailto:jfpowers@tds.net)  
Tom Kludt [northtom@tds.net](mailto:northtom@tds.net)  
Mark Lafreniere [jacquel@tds.net](mailto:jacquel@tds.net)  
Bob Tidmore [b\\_tidmore@hotmail.com](mailto:b_tidmore@hotmail.com)  
Phil Wyckoff [pjwyckoff@aol.com](mailto:pjwyckoff@aol.com)  
Doug Tilly [tillydoug@yahoo.com](mailto:tillydoug@yahoo.com)  
Paul Johnson [kpjohnson@tds.net](mailto:kpjohnson@tds.net)

Gary Morgan [garymorganandsons@mail.com](mailto:garymorganandsons@mail.com)  
Bruce Beaudoin [bruce@buildersnorth.com](mailto:bruce@buildersnorth.com)  
Bill Detwiler [wgdetw@gmail.com](mailto:wgdetw@gmail.com)  
Don Tritsch [dtritsch@tds.net](mailto:dtritsch@tds.net)

Good Luck and enjoy the 2011 Deer Hunting Season

– Jeff Powers, President,  
Beaver Island Wildlife Club

**Mark LaFreniere**  
**Painting**  
**Interiors and Exteriors**  
**Free Estimate**  
**231-448-2220**

**St. James Marine Co.**  
**is Now Collecting**  
**Scrap Metal**  
**to Recycle**  
**FREE**  
**Clean up your property**  
**Bring scrap metal to our dock**  
**No Freon (Refrigeration)**  
**If you have any questions or need information, please contact**  
**St. James Marine Co.**  
**Phone: (231) 448-4000 Cell: (231) 838-0254**  
**[www.stjamesmarine.com](http://www.stjamesmarine.com)**



# 18. SEMPER PARATUS: ALWAYS READY

by Larry Hansz

*We're always ready for the call, We place our trust in Thee. Through surf and storm and howling gale, High shall our purpose be. "Semper Paratus" is our guide, Our fame, our glory too. To fight to save or fight to die, Aye! Coast Guard, we are for you!* —Second verse USCG Marching Song by Captain Francis Saltus Van Boskerck, USCG

Most Island residents know of someone who has been medically evacuated from the Island. Medevacs are often the topic of morning coffee gatherings and other social interactions. "Who did the Coast Guard take off last night?" "I heard the helo come in last night." "So and so got taken to the Charlevoix Hospital by the Coast Guard." Medical care is one of the most important weak links of Island life and a quick evacuation for a serious condition is imperative. United States Coast Guard Air Station Traverse City is "ready for the call."

They are ready for the call from the Beaver Island EMS and Health Center but they are also ready for the call from so many others. Consider some of the USCG District 9 calls in the last months:

"Coast Guard medevacs man injured on Kelleys Island."

"Coast Guard rescues wind surfer near Alpena."

"U.S. Coast Guard medically evacuated 68 year old man 15 miles north of Charlevoix."

"Coast Guard assists 6 adults and 1 child on recreational boat taking on water."

"Coast Guard rescues 4 year old boy adrift on inflatable raft."

"Coast Guard searches for two reported missing on the St. Clair River."

"Guard works with firefighters, EMTs to rescue teenager after fall from cliff."

"Coast Guard aircrew from Traverse City deploys for Hurricane Irene response."

"Coast Guard searching Lake Huron after report of possible plane crash."

"Coast Guard rescues man who was stranded on North Fox Island."

"Air Station Traverse City deploys helicopter and crews to assist Red River flooding operations."

"Coast Guard searching for two after sailboat capsizes in northern Lake



Michigan."

"Coast Guard medically evacuates crew member of Canadian freighter."

"Coast Guard searching Green Bay for missing man."

On an average day nation wide the Coast Guard has sixty-four search and rescue cases underway and saves twelve lives. That may be an eye opener to some on Beaver Island but to the 41,600 active duty Coasties it is an everyday fact of life. That is why they serve. Air Station Traverse City is one of twenty-four air stations ready to answer the call along with others serving on cutters, boat stations, and land based units.



## Air Station Traverse City:

Year	Total Medical	B.I. Air Evacuations
2009	12	3
2010	15	10
2011 to Oct 1.	12	8

(per USCG Air Station Traverse City Public Affairs Office)

What exactly happens when a call from Beaver Island requesting a medevac is received by the duty watch desk in Traverse City? It sets into immediate action dozens of people from Traverse City to Sault Ste. Marie to Cleveland and possibly Detroit who will evaluate, coordinate, and manage the flight. The ready crew is immediately notified to ready an aircraft, however that is just the beginning. For a search and rescue case (man in the water, vessel sinking, etc.) the standard is to launch within thirty minutes. For a medical case

the issue can be a little different.

Within seconds after the call is received District 9 Headquarters in Cleveland is notified. It is one of nine Coast Guard Districts and is responsible for all USCG activities on the Great Lakes, St. Lawrence River, and parts of the surrounding states. District calls which ever CG doctor is on call, either the one at Air Station Traverse City or one at Air Station Detroit at Selfridge Air National Guard Base. The Flight Surgeon must evaluate the patient's medical situation, need for transport, determine which medical center is most appropriate for the care needed, and determine the level of care required during the flight. He or she confers with the Beaver Island Health Center's nurses and EMTs. He determines the best time for the transport: Is the patient stable and can he/she wait for daylight or better weather? Or, is the patient critical or may soon become critical and must be moved as soon as possible. He must also confirm that a private/commercial air ambulance (Munson Medical Center's North Flight) is not able to accept the transport as the government will not take business away from the private sector unless it is an emergency. The doctor must decide what personnel and equipment must be onboard. The usual flight crew includes pilot, copilot, flight mechanic, and a rescue swimmer who is EMT qualified. Occasionally the Traverse City Flight Surgeon, or a North Flight nurse, or Beaver Island EMT will accompany the patient. This sounds like a lot but it happens fast enough to allow in a critical case for the crew to meet the SAR (Search and Rescue) standard of being air born in thirty minutes. If the patient is not critical or weather is a factor the elapsed time may be longer.

While the Flight Surgeon evaluates medical issues the ready crew is preparing themselves and the aircraft. Ready crews stand duty for 24 hours from 1600 to 1600 the next day on week days and from 0800 to 0800 weekends. Air Station Traverse City has an active duty staff of about 150 which includes 28 pilots and 60 air crew including twelve rescue swimmers. A rescue crew is on duty twenty four hours a day every day of the year. If the crew is already





working a case in Duluth, southern Lake Michigan, or elsewhere it is not hard to assemble a second crew on week days, however, during the night and weekends a back up crew must be called in. Of course there are many others on the ground involved in communications, operations, and maintenance.

The duty crew dress out for the mission. In the winter months this includes three layers of under garments plus a dry suit on top. Each has night vision goggles. The Watch Captain and/or the Plane Captain and the Operations Officer, if available, review the latest Notice



to Airmen, airspace restrictions, hospital options, and weather conditions. Fog and icing conditions are of primary interest. They also take into consideration how this flight may affect any other SAR or other cases currently underway.

The ready aircraft, one of five MH65C Dolphin helicopters stationed in Traverse



City, has been pulled out onto the ramp by a tug and pre-flights are conducted.

The Dolphin, the Coast Guard's most ubiquitous aircraft, was selected in 1979, introduced in about 1984, and continuously updated. It is built by American Eurocopter, a French firm which is the largest in the helicopter industry in terms of revenues and turbine helicopter deliveries. There are 101 Dolphins in the Coast Guard's inventory.

When the Flight Surgeon has approved the flight the crew immediately start the aircraft, complete the pre-flight preparations, taxi out to the main runway taxiway, and ask for clearance to take off. *continued on page 20.*

## ISLAND BOODLERS WALK THE WALK

This year's Boodle took place on a warm Saturday in early October, with runners and walkers setting off at the crack of a cannon. Although there were fewer participants than last year, everyone

had a great time, and no one got lost along the route. Here are the top three for each category:

**Male Runners:** Cameron Burton (21:10); Christo Miner (22:35); and Dave Dewey (23:18).

**Female Runners:** Linda Frysinger (30:30); Leslie Shanlain (32:31); and Laura Gibson (34:04).

**Male Walkers:** Michael Risinger (42:51); Jeff Stone (45:34); and Jeff Risinger (45:36). *continued on page 20.*





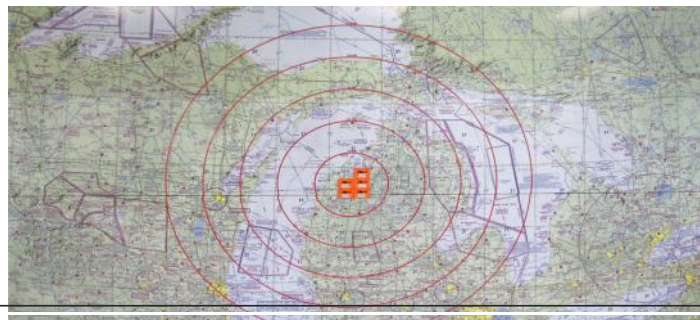


**Semper Paratus**, continued from page 19. Once air born the flight to Beaver Island takes about thirty minutes. The aircraft reports position and flight operations on VHF radio every fifteen minutes to the duty desk in Traverse City. If on a longer mission, for example into Lake Superior, another Coast Guard station will pick up the watch and maintain communications. A few minutes prior to landing at

the Beaver Island Township airport the helo radios that they are in the pattern for landing and the Island EMS prepare for the transfer of the patient. Unless there are unusual circumstances the aircraft is only on the ground a few minutes and the engine remains running. The Rescue Swimmer and the Flight Mechanic deplane just long enough to receive a brief medical report and load the gurney

into to cargo bay. Usually the patient stays on the EMS's gurney instead of being transferred to the Coast Guard gurney which is designed for hoisting people out of the water or off ships. It is less hassle for the patient.

When the patient is secure, onboard the EMT Rescue Swimmer becomes the caregiver unless the Flight Surgeon is also aboard. Once in the air a position and ops



**Island Boodlers**, continued from page 19. *Female Walkers:* Sarah Rohner (45:35); Maureen Turner (48:14); and Erin Myers-Dixon (105:3).

Afterwards over 250 people sampled the delicious gourmet offerings at the Parish Hall, shopped for gifts at the Arts and Crafts show at the

Community Center (candles, jewelry, foodstuffs, furs, stuffed animals, and novelties), and shared stories and comments with their friends.







call is made to the duty watch officer. He or she is coordinating a local ambulance to meet the aircraft. The destinations usually are: Harbor Springs where the patient is transferred to Northern Michigan Hospital in Petoskey; Charlevoix airport then to Charlevoix Area Hospital; or Traverse City then the Emergency Room at Munson Medical Center. Once the patient is in the ambulance the Coast

Guard's job is done. They very seldom hear anything more about the patient and do not know his or her outcome. They have done their job. Also, the patient receives no bill! Seems like at least a thank you note would be appropriate.

Commander Chris Chase, Traverse City Operations Officer, summed it up: "We are always ready for the call, but we must make sure nothing worse is going

to happen to the patient while in our care." It's their job and they are there for us. Thank you.

A special thank you to Commander Chris Chase, Operations Officer, and LTJG Chistoper Breuer, Public Affairs Officer at Air Station Traverse City.

*Stay tuned for part two of this series when a four member air crew and some support staff will be featured.*



That evening many Islanders went down to CMU's Bio Station for the year-end dinner, which gave us our chance to let the university know how

much its presence is appreciated – and to swap stories about how its presence has elevated our general awareness of ecological issues. When someone

expressed disappointment that the collection of alligators, turtles, and snakes was no longer there, a jesting professor replied, "We had to set them free!"







## EMPTY HANGAR

A 1946 Taylorcraft and a 1974 Lake Amphibious float plane were recently moved out of our hangar, but we're left with some wonderful and blessed memories. The 1946 Taylorcraft log tells stories of John (excuse me, everyone knows him as "Red") and my courtship. I guess I was impressed with

his airplane, as well as the fact that he was a good guy. That was 43 years ago. John had built snow skis for it and when we lived down state on a lake, he and Paul Baron would fly together. Paul was a champ on snow skis. On weekends they would go off flying and then land on the lake and I would feed them. Paul was single at the time and could he eat!

The Taylorcraft has been to Alaska many times, out west and to Canada.

We also bought a Cessna 180 that had fixed floats. While the floats were on, we could land on water and then when they were off we could land at airports. During the summers, we delivered airplanes to Alaska for Paul Baron, managed a fly-in fishing lodge





in Canada, and flew the Northwest Territories. I knew how to fly — land and take off, in case something happened to John. While they were building our house, we would land in the harbor on Beaver to watch the progress. When I saw Roy Ellsworth and his Lake, I told John that I wanted one just like that so we could keep it next to the house when we retired to the Island.

We almost missed buying the Lake. We went to look at it in South Bend, Indiana. A doctor had it for sale because he had bought a helicopter. We were very interested and I asked him if he wanted a deposit. He said that wasn't necessary. On the way home John and I decided we wanted it. I called him and he said he sold it to the next people that looked at it. I said, as I was crying, "You wouldn't take a deposit!" He said he didn't think we had the money.

I guess we looked poor. He did make it right and told the other people that we had sent him a check in the mail. I really made him feel guilty.

John built the hanger next to the house when we retired twenty-five years ago. The Taylorcraft and the Lake shared the space but the Taylorcraft was pretty

much retired — like its owners.

We have had many wonderful adventures with the Lake. It has been as far as the Arctic Circle. We had a rubber boat and a small motor that was hauled in the Lake for fishing trips.



There are many men folk on the Island who made fishing trips to Canada with John. The other night we

got a call from our grandson Eric 23. who spent summers with us on the Island. He is now a sergeant in the Marines. He said how sad he was that we sold it because he had so many happy memories of the Lake. He and grandpa made many fishing trips in it.

There aren't many grandpas and grandsons who have those memories.

Our planes went to good homes. Roland, a retired Northwest Airlines pilot bought the Lake. Its new home is now in Northport. Keith and Rachael Teague are the excited owners of the Taylorcraft. They plan to rebuild it and someday it will be at the Winterfest for rides. Our flying adventures may be over but these people will have new ones, and that makes us very happy.

John and I feel very blessed that we were able to have all these years of wonderful adventures. Our hangar is empty now, but our hearts are filled with happy memories. Sally Davis used to say, "Another chapter in your lives". This is another chapter in our lives and we always look forward to new adventures.  
—Pat Rowley

## TAKE THIS, PLEASE; YOU'LL ENJOY IT

There's an opportunity to have your voice heard in an important planning process on Beaver Island. The St James Township Board is developing a 5-year recreation plan with goals and priorities. As part of the process the township is seeking input from all year-round and seasonal residents of Beaver Island, as

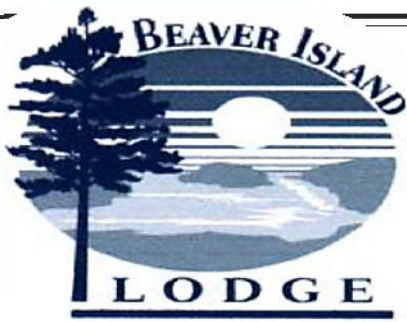
well as visitors. There will also be an opportunity for public feedback on a draft plan.

Please take a few minutes to respond to this survey online at [www.surveymonkey.com/s/RRRHSF5](http://www.surveymonkey.com/s/RRRHSF5)

It's easy and fun—if you haven't taken one of these online before, try this

one! If you prefer to fill out a printed copy of the survey, it can be picked up at (and returned to) McDonough's Market, the Library, Community Center, or Health Center. The survey results will be included in the plan. Thank you.





*The Restaurant  
at Beaver Island Lodge*

*Where the Cuisine is as Wonderful as the View*



231-448-2396

[www.beaverislandlodge.com](http://www.beaverislandlodge.com)



**St. James Marine Co.**  
**New Options**  
for Beaver Island freight  
[www.stjamesmarine.com](http://www.stjamesmarine.com)



**Stock up for the fall and winter!**  
non perishables, housewares, lumber, furniture, etc.  
insulated and weatherproof  
**You lock it! We deliver!**



**small**

Small Container: 58 cubic feet  
(4'X4'X4'10") (LxWxH) \$45



**medium**

Medium Container: 162.5 ft<sup>3</sup>  
(6'X5'X4'10") \$60



**large**

Large Container 225 ft<sup>3</sup>  
(6'X8'X5'4") \$96

and, of course, extra large ...



**You call, WE HAUL!**

Phone: (231) 448-4000 Cell: (231) 838-0254

## Larry Laurain Construction Licensed and Insured

Custom Home Construction  
Remodel • Additions • Garages



Free your inner architect and enjoy  
a worry-free project by working with  
Larry Laurain Construction.

Custom New Homes  
as well as quality additions and remodels.

**231.448.2055**



**BEAVER GEMS, INC.**



- General Contracting
- Specializing in commercial construction on Beaver Island
- Homes
- Crane Service
- Projects from remodeling to cell towers!



Call for more info: **231-448-2235**

email [beavergemsinc@tds.net](mailto:beavergemsinc@tds.net) fax 231-448-2740

web [www.beavergems.com](http://www.beavergems.com)



Beaver Island Rural Health Center



Beaver Island Community Center



CMJ Gillingham Academic Center





## LIFE IN A TOY STORE *by Don Snider*

There are thousands of toy stores across America. Most aren't hard to find because they're big box stores with bright neon signs.

But there's only one Toy Museum and Store. It's here on Beaver Island, a mere speck in the middle of northern Lake Michigan. And even here, it's

practically obscured by thick bushes and trees, with only a weather-beaten wood sign next to a narrow path

But everyone who visits Beaver Island knows about "The Toy Store" - as it's more often called. "My neighbor told me it was a must-see," said Theresa Hartl, of Grand Rapids, a mother of three children, Caroline, 2, Nolan, 5,

and Sofie, 7. "She was right."

Tom and Linda Speers, of Fife Lake, Mich., discovered the Toy Store as soon as they landed their 34-foot sailboat on the Island. "This is our third time here," Linda said, as daughter Megan, 6, roamed the aisles. "As soon as we get off the boat, we head for the Toy Store."

*continued on page 26.*



## KEEPING OUR PETS SAFE



they believed this was their special day. But it was really more for the owners, both to assure them that all God's creatures were under His protection, and to let them demonstrate to anyone driving past Holy Cross Church in the middle of the afternoon that this menagerie of beasts is of the utmost importance to all who reside on or visit Beaver Island.

Truly they are. Especially in the off-season, because that's when many friends head south and companionship is vital. And those who remain have more time on their hands to get out and see the Island, to circle the lakes and walk the trails. That's

Over a dozen people brought their dogs for an important ritual on a bright sunny day, the Blessing of the Pets. This year it was conducted by Father Joe, who drafted some of the bystanders into helping, Peter Igoe and Jim Heit.

The animals were generally well-behaved, as though



when a dog comes in handy, to keep us aware of what might be hiding in the bushes or might have left its scent—or, if we lose our way, which *can* happen, to help us find where we left our car.

All in all, the crowd of pet owners was delighted that Father Joe elected to keep up this important tradition.



What makes the Toy Store special is its collection of priceless antique toys, its unique inventory and its owner. It is truly a step back in time. Where else can adults relive memories of the 1940s and '50s (and even much earlier) while kids can buy hundreds of items for 25 cents each? Or, heck, some even for a nickel?

The items would be considered mere trinkets or novelties anywhere else. But on Beaver Island they are irresistible, almost-forgotten treasures.

Outside the back of the store is a well-worn playhouse. It's about four feet tall and not for sale, but kids such as Megan Speers, find it fascinating to hang out in. "Look at her," Linda Speers said, pointing to her daughter. "We have a play house at home and she's never in it. But I can't get her out of this one."

Mary Stewart Scholl has a similar problem with everyone who comes to the Toy Store. The store is open from 11 a.m. to 4 p.m. most days during the

tourist season. But it's usually jammed at closing time and Scholl has trouble shooing some of them out.

Scholl is the proprietor. Sometimes she goes by Mary Rose, a pseudonym.

Why Rose? "I just think it's a nice name," she said.

Whatever name she goes by, Scholl has become a Beaver Island icon, a real character on an Island of historic legends such as James "King" Strang, who founded the first permanent white settlement in the 1850s, and Feodor Protar, who served as the Island's beloved unofficial doctor in the early 1900s.

Besides owning the Toy Store, Scholl also has become the Island's outspoken liberal political voice.

Scholl came to Beaver Island in 1979 after owning several shops on Chicago's north side.

She is reluctant to talk to reporters at first - "Can I trust you?" She asks — but once she opens up, she's like her radio in the Toy Store that's always tuned to either to NPR or a classical

music station. The radio is always on, even when the store is closed. "I've never turned it off," she says. "Never."

In a veritable stream of consciousness, Scholl tells about often being destitute. But always — either by luck or pluck, or both — she has landed on her feet. "I'm not a member of any organized religion," she said, "but I am spiritual, and I believe God whispers in your ear."

She grew up in the Washington, D.C., area, the daughter of Donald Hudson Drayer, an architect, designer, artist, and inventor. "My father helped design the renovation of the White House under Harry Truman," she said. "Truman, JFK, and LBJ — they all came to our house when I was a kid. I didn't know who they were at the time."

Scholl received a B.A. in education at Cornell University before coming to Chicago to study at the Art Institute. Her travails in Chicago in the 1970s are long stories difficult to make short. With only \$125, and expecting her only

## IN MEMORY: DOUG BUGAI

Douglas Neal Bugai, 61, of Beaver Island and a native of Greilickville, died Friday, October 14, 2011, at his family home, surrounded by his family. He was born on Friday, July 7, 1950, to the late Stephen and Ethel Bugai in Traverse City. Following graduation from high school, he served our country

as a member of the U.S. Army during the Vietnam War. Following his discharge, he worked for many years in saw mills and the oil fields. He came to Beaver Island in 1990 as a sawyer at the Graves' Mill but worked for the Beaver Island Transfer Station for the last 14 years. He was credited for improving

the way the Transfer Station did its business, combining an insistence on following the rules with a humane touch that let everyone know he was on their side. He could always be counted on to deliver an honest opinion.

He loved the out of doors, and enjoyed hunting, fishing, and trapping.

## Martin Well Drilling

- Residential and Commercial
- Water Wells: 4", 5", and larger
- Modern Rotary Well Rig

Also ...

- Pump Installations
- Well Repairs

If you want a well now,  
I have the equipment.

Call Bud @ 448-2197  
or 448-2397



**BREAKFAST LUNCH & DINNER 7 DAYS**  
**Breakfast Mon.- Sat. 7 am- 11 am Sun. 9 am - 12 pm**  
**\$5 Lunch Specials M- F 11 am- 2 pm Dinner 5- 8 pm**  
**Monday - Friday Happy Hour 4 to 6**  
**MONDAY PIZZA BUFFET ALL U CAN EAT**  
**\$6.95 adult \$4.95 child**  
**WEDNESDAY ETHNIC NIGHT**  
**FRIDAY BBQ RIBS**  
**SATURDAY PRIME RIB**  
**SUNDAY FRIED CHICKEN AT DINNER**

[www.shamrockbarrestaurant.com](http://www.shamrockbarrestaurant.com)



child, she roamed the streets as a self-described "hippie girl," getting people to help her out by convincing them: "I'm the best person you'll run into — honest."

One early business partner, though, left her because "I was too darn cheerful."

Scholl opened her first Chicago store while being a single mother at 2034 N. Halsted St. She suffered such setbacks as being robbed by neighborhood thugs and falling two floors and breaking some ribs and her vertebrae. While being laid up for weeks, friends such as Kathy Swanson helped her out. A DePaul University childcare program helped with her son, Jason.

At one point she was so broke she had to panhandle for a week.

Incredibly, by the sheer force of her persistence, Scholl said she was able to earn \$10,000 by convincing people she would open a store and pay back everyone with 10% interest.

Eventually she married Larry

Scholl, an owner of nearby toyshop in Chicago. A friend of her mother convinced them to move to Beaver Island.

"We brought 400 boxes of toys and 400 boxes of household goods," she said. "They laughed at us on the boat."

Scholl lived for a while in the large white house next to the present Toy Store. With the help of island friends, she had the Toy Store built in the early 1980s. She and Larry divorced in 1984.

Behind the Toy Store is an art gallery — she is a very accomplished painter, too — where she sells her own works and the arty photographs of her son. Jason, now 36, lives in Traverse City. Even farther behind the store and art gallery, through a thick clump of trees and bushes, is her large house, where she also keeps her three beloved dogs. Despite the house's size, it also is almost hidden by the overgrown vegetation. She planted most of it herself, including some large spruce trees. "Life has been very good up

here," Scholl said. "I couldn't be 27. happier."

"I've gotten to love everyone who comes in the door."

Scholl said she once wanted as many as 12 children, but while Jason is her only offspring, she has taken care of many of her friends' children. She describes Jason as "an absolute prize ... a sweet person."

She has one sister, Lindsey, who helps her get off the Island, usually to the Upper Peninsula, in the off-season.

At age 72, she shows no signs of slowing down, despite running the store virtually by herself. But what will happen to the store when she can no longer maintain it? "If my son doesn't want it, I'm going to give it away for \$1. And who ever buys it will have to sign a paper saying they'll only sell it for \$1."

"I only hope she owns it for a lot longer ... for future generations," said Linda Speers.

The Beaver Island Toy Museum and Store is indeed a one of a kind.

He also enjoyed country music, as well as Polish dancing. He was an excellent darts player. He was a member of the Beaver Island AmVets and Immaculate Conception Catholic Church in Traverse City.

Doug was proud to serve as a volunteer fireman on the Elmwood Fire

Department, and was honored as one of their Fireman of the Year.

Doug is survived by his son, Stephen "Stef" Bugai, a talented builder on Beaver Island; his brother, David (Linda) Bugai, of Traverse City; his nieces and nephews, Tony (Julie) Bugai, of Kalkaska, Mickie (Hal)

Miller and Mindy (Nate) Kujawski, all of Traverse City, Courtney and Tyler Skipski, of Three Rivers; eight great-nieces and nephews; and one great-great-niece, Lilly.

He was preceded in death by his parents.



- NEW CONSTRUCTION
- REMODEL
- COTTAGE OPENING, CLOSING, CLEANING, + MAINTENANCE
- SHOWER & BATHROOM DESIGN
- FURNACE & BOILER SERVICE + INSTALLATION
- FAUCET + FIXTURE REPLACEMENT
- WATER HEATER REPLACEMENT + SERVICE
- WELL MAINTENANCE
- LICENSED HVAC INSTALLATION + REPAIR
- LP APPLIANCE + SUPPLY INSTALLATION
- I CAN FIX ANY LEAKY FAUCET OR PIPES
- PLUGGED SEPTIC LINES
- WATER SOFTENER INSTALLATION + SERVICE
- DISCOUNTED SERVICE RATES FOR YEAR ROUND RESIDENTS

Call 231-675-8692

Now doing wells on Beaver Island!



**(231) 228-5678**

4" & Up Steel Wells

5" PVC Wells

Pump Sales & Service

Well Repair

**Mark Zientek**

**John Zientek**

NATIONAL WATER WELL ASSOC.

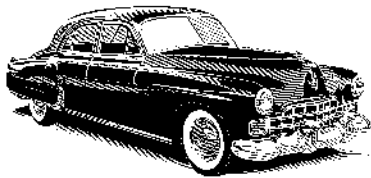
**Certified Contractor**

Fax (231) 228-5637

233 E. Kasson Rd.

Maple City, MI 49664





## Inland Auto

Mobile and Land Based Repair

29 years experience in the business

### Friendly Service

Michigan master certified in  
automotive light and heavy trucks

We repair heavy equipment.

**We Build and Service  
Electric Vehicles too!**

Jeff Connor Proprietor

 **231-448-3132**

*Paradise Bay Coffee Shop*  
Across from the Township Airport



Featuring coffee, espresso, specialty drinks, Breakfast & Lunch

**Closed Until June 2012  
Thanks for the Business  
Happy Thanksgiving!**

*Dale & Terry Keyes,*  
Proprietors [Dale\\_Terry\\_Keyes@msn.com](mailto:Dale_Terry_Keyes@msn.com)



## 28. ON THIS DATE

**Ten Years Ago** The Island School announced it would produce another hard-cover yearbook, its second, under the guidance of Elaine West. Kellie Gillespie would be the editor.

The *Beacon* published a letter by Henry Hill in which he warned Peaine residents that the recently-passed agreement to assess the same millage rate as St. James for the Health Center could be the "camel's nose nudging under the tent." He decried the intimidating pressure applied by St. James residents and urged Peainers not to let this be the beginning of millage equality, rather than Township equality, for all joint facilities.

The Beaver Lodge raised over \$5,500 for the Health Center by serving 164 diners. The Charlevoix County Planner proposed including Jack Kelly's Recreation Plan in the county master plan. The *Beacon* printed Mark Newman's poem about nine eleven, and Jack Spanhak's about the loss of Sandy LaFreniere.

The Historical Society reported that the thresher donated by Katherine Ricksgers in 1960 had finally been moved to the Heritage Park, thanks to Ivan Young and Ernie Martin.

**Twenty Years Ago** A few months after the Preschoolers' School was cancelled because of a lack of space, it was started again with five students, thanks to Holy Cross Catholic Church opening the Rectory's basement for the program. Joan Becker was in charge.

The Chamber hosted the Hunters' Dinner, with rabbit stew, elk roast, barbecued racoon, venison chili, elk enchiladas, caribou roast, and stew.

Jo Hooker pointed out that hunters in the Port St. James must have written permission, and said too many home-

owners had close calls with bullets.

Joe Moore won the Wayne McKenna EMS Award—Wayne McKenna had been the head of the State EMS for 17 years.

The Municipal Airport received a grant of \$50,000 from the Department of Transportation to buy more land for \$45,000 and make improvements, but the purchase was held up by the land's appraisal coming in at \$25,000.

The final draft of the Critical Dune Ordinance was sent for DNR approval.

Alan Gillespie requested permission to install a 150' dock with five slips in front of the "*Beacon* Building," the former Castaways Restaurant.

Harold Hart began campaigning for major improvements to the Island's tennis court, located behind the School. He thought the cost might be ~\$20,000, and pledged to donate \$500 himself.

The *Beacon* printed a long letter from Archie LaFreniere, written from Tokyo Bay on August 8, 1945, which detailed some of his experiences at the end of the war.

In a "last minute addition" the *Beacon* reported that Governor Engler vetoed the Medical Center line item from the State's budget, and said it would not be reinstated. A scramble was on to pass a special millage.

The Michigan Nature Conservancy announced the Gull Harbor preserve, thanks to four grants totaling \$40,000 and donations of \$25,000, leaving only \$15,000 left to raise.

**Thirty Years** The *Beacon* was delayed because first the Gestetner mimeo machine on which it was printed broke down had to be sent across for repairs, and then editor Terri Liller dropped a piece of firewood from a tall stack that hit and broke her nose,

## CYRIL (TIM) JOSEPH TIMSAK

Cyril (Tim) Joseph Timsak, formerly of Beaver Island, went to heaven to join his beloved Vera on September 27, 2011. He was 89.

Tim was born to Joseph and Anna Timsak of Bridgeport, Connecticut on August 22, 1922. He married the love of his life, Vera Jean Munton, on June 3, 1945.

Tim worked various jobs for many years until making his home with Vera

in Muskegon and working for the Anaconda Wire Factory for 33 years.

Tim and Vera moved to Beaver Island in June 1973 with their two children, Joseph and Jacque, after purchasing the Shamrock Bar with his cousin, Barb Beckers. He was co-owner of the Shamrock for 1½ years, but then sold his half-interest to Barb and her parents, Buz and Betty Anderson.

Tim began working for the St.



sending her to bed for a week.

The Historical Society announced that the third printing of *Volume I* of the *Journal* had arrived.

The search for an Island dentist produced Dr. Miller, who was willing to come over on occasion if dental equipment could be procured.

Antje Price reported that on her recent trip to San Antonio she found that Protar, called "a reporter" and "amateur actor," had taken part in theatrical productions.

George Egbert paid tribute to Charles Earley Jr, who had passed away on September 10. He had founded and ran the Michigan Beaver Island Association for 20 years, despite failing health. The group formed over coffee at the Hotel Olds in Lansing; it included Egbert, Earley, Keith Rasmussen, Murray Wanty, and Henry Allen.

**Forty Years Ago** The *Beacon* reported that the second "bucks only" deer season produced 38, with 8 coming from Garden Island—including the biggest (215 pounds, dressed).

The Game Club intended to plant turkeys and pheasants.

The Student Council elected Audrey Wojan as president, Karen McCafferty as secretary, and Rich Gillespie as treasurer. They organized a trip of 9<sup>th</sup> through 12<sup>th</sup> graders to the Charlevoix Home-coming, and then sponsored a Halloween Dance at our school.

The school started an Adult Education program, with 7 taking accounting, 8 sewing, and 4 typing.

The Beachcomber and the Killarney Inn closed for the winter.

Former Islander Mary Ann McCann was the Junior Miss Pageant winner in Peru Indiana.

The Township Treasurers, Rose

Connaghan and Vera Wojan, were preparing to begin issuing dog licenses to those with proof of vaccination.

Subscriptions were raised to \$4.00.

Sympathy was expressed for the loss of Gertrude Campbell, 91—the mother of Grace Nackerman.

**Fifty Years Ago** The Conservation Department planted 14 brown trout in Fox Lake, but they all died; later tests showed the water was still too toxic from the previous year's poisoning. Once the water cleared 2,500 brookies were to be planted.

Archie LaFreniere, with help from his dog Duke, shot the season's first coyote. Rogers Carlyle got two pats with one shot. Karl Kuebler shot the first goose. The six wild turkeys released near Angeline's Bluff were seen near town. When farming was part of the Island pheasants were plentiful, but they disappeared along with the farms.

Frank Neer kept finding partially-eaten rabbits in his garage. One evening when he and his wife returned late, the car lights illuminated three feral cats coming out of the garage. So they set traps, and captured twelve, the largest weighing 18 pounds.

It was reported that the previous year the Game Club cleared a trail from north of Dody's Camp to the West Side Road, which had received much use. It was marked with paint, red facing south, yellow facing north. This year two more trails were brushed out, one being Buffalo's Camp Trail, and another running SE from Dody's Camp.

The *Beacon* was asked to remind readers that driving on the Island required a license. Bishop Babcock arrived to confirm 38 children.

The McClure Oil Company's 2<sup>nd</sup> well was at 4,800'.

James Municipal Yacht Dock, a position he held for many years before retiring. He loved the outdoors and would spend many hours walking or just sitting in the sun. Tim enjoyed his conversations with the boaters who would come in the summer, and made some lasting friendships there. He and Vera spent their final years living in Charlevoix and traveling.

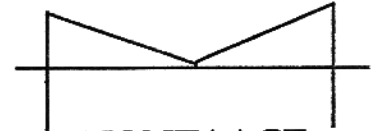
Tim is survived by his children,

Joseph (Cheryl), and Jacqueline, grandchildren, Joey (Jenni), Krystle (Royce) and Bryan, great grandchildren, Chloe and Brody, his brothers, David (Carol), Robert (Anne) and sister-in-law Vera Fanjoy, many nieces and nephews. He is preceded in death by his loving wife Vera, his parents and stepfather.

A private family ceremony will be held in the spring.



*Autumn Makes Our Out-of-Doors Spectacular!  
Come see all the unique items at MONTAAGE  
and Make Your Home Equally  
Spectacular  
for the In-door Months to come*



## *Making Art A Part of Everyday Living*

For a different Island experience come and shop in this "home away from home"—where you'll find unique gifts, fine furnishing, and accessories for your tent, cottage, or home.

We get rave reviews!

Complimentary gift-wrapping and design services on request. You shouldn't leave Beaver Island without a trip to MONTAAGE.



## **MONTAAGE**

since 1929

26435 Donegal Bay Road,  
Beaver Island

231-448-2802

Call Liz or Judy (448-2441)  
to meet you at your convenience





A 28-acre addition to the Little Sand Bay Preserve on Beaver Island was recently purchased by Little Traverse Conservancy as a result of a donation from the J.A. Woollam Foundation. The addition brings the much-beloved preserve to a total of 88 acres and adds 1,000

feet of Lake Michigan shoreline to the preserve, for nearly a half mile of total lake frontage. The addition consists primarily of cedar lowlands and wetlands, and there are two marshy ponds in the southeastern portion of the land near the shoreline. Shortly after this announce-

ment was posted on the LTC Facebook page, favorable comments began to appear. Valerie Olink-Damstra, former year-round resident of Beaver Island, said "one of my most favorite spots on Lake Michigan – so beautiful!" "It's wonderful that Little Traverse Conservancy

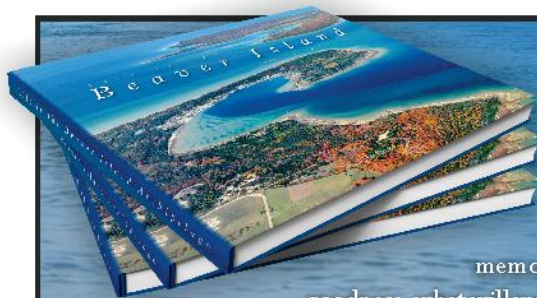
## GRANTS AVAILABLE

The Beaver Island Cultural Arts Association is once again offering a mini-grant program for 2011-2012 to support the creative work of local artists who enrich the cultural life of the Island community. Funding for the program is generated by proceeds from Baroque on

Beaver, an annual classical music series that combines the talents of year-round and seasonal residents with professional musicians from across Michigan.

This program was created by the BICAA Board of Directors as a means to support year-round cultural arts in the

Beaver Island community. Artists will be able to apply for funding to cover costs for such necessities as time and materials to create their art, rental of rehearsal and performance space, travel expenses or fees for attending seminars or classes, opportunities to branch out into new art



### *The perfect Christmas gift!*

**A**round this time many of us begin to fret over what we can give our friends and loved ones for Christmas. We want something special, something unique, something memorable. A trip to the mall won't suffice. My goodness, what will we ever do?

Relax! The answer is at hand! The new book, *Life in the Beaver Island Archipelago*, is the perfect gift, one that will be appreciated by its recipient for years to come! For only \$35 it can be mailed to the person of your choice in a study box – it's that easy! Or have it sent to yourself so you can deliver it in person and watch eyes light up.

Just fill out the form at the back of this magazine, send it in with a check, and sit back to wait for a phone call gushing with thanks!



*Landscapes by Barbara Rahn*

231-448-2035

HoneyBeach@tds.net

## *Beaver Island Association*

*Supporting Environmental  
and Economic Sustainability*

**Join Now!** Keep in touch with Beaver Island events likely to affect you and your property.

**Receive *Island Currents***, the informative BIA newsletter.

**Contact:** Bob Anderson, Treasurer at BIA, Box 390, Beaver Island, MI 49782

**Visit our web site:** [BeaverIslandAssociation.org](http://BeaverIslandAssociation.org)



## **WENDY S. WHITE, D.D.S.** **BEAVER ISLAND FAMILY DENTISTRY**



P.O. Box 218  
37304 King's Highway  
Beaver Island, MI 49782  
(231) 448-2100  
Hours By Appointment





allows public use of the majority of its property,” said Steve West, Executive Director of the Beaver Island Chamber of Commerce. “The Little Sand Bay Preserve is a big favorite of Beaver Island visitors. Many return to my office to say thanks for the tip following their

family’s enjoyment of the cedar swamp trail and stunningly beautiful bay.”

Many who are concerned about Beaver Island’s long-term future believe its best course is to pattern itself as a place where diverse natural resources are protected and enhanced, a place where

outdoor recreation is encouraged and facilitated. This expanded preserve displays the ambiance that could settle over the entire Island, and reminds all of the Island’s friends of the importance of continuing a relationship with the Little Traverse Conservancy.

forms, and other reasonable needs.

A Selection Committee composed of Board members and community residents qualified in specific areas of the arts will review applications and make recommendations on awardees for Board approval. For more information,

please contact Anne Glendon, [aglendon@sbcglobal.net](mailto:aglendon@sbcglobal.net) or Miranda Rooy, [mirandarooy@hotmail.com](mailto:mirandarooy@hotmail.com)

Eligibility requirements:

- Year-round or seasonal residents of the Island for a minimum of 2 years;
- At least two years in the art form for

which support is being sought;

- Submission of a completed application, which includes a statement of need for funding; and
- Agreement to show, share, demonstrate, or perform whatever work is produced as a result of the grant.

*For Sale: Collins Home - 37756 King's Highway  
on Beaver Harbor*

more photographs can be seen at [www.edwojanrealty.com](http://www.edwojanrealty.com)

A very rare offering of a newer home ON BEAVER HARBOR with a fantastic view of the entrance to Paradise Bay. The house sits up on a bluff overlooking the harbor, offering an unequalled view with a deep running lot from the King's Highway right down to the water's edge. The frontage has a pure sand bottom, great for swimming and safe for kids.

The first floor level has two bedrooms and one full bath, a formal dining room, a living room with a wood-burning fireplace, an excellent fairly new kitchen, and a screened-in three-season porch. There is an open deck on the lake side in front of the living room, and a protected private hot tub area below the porch with a full view of the harbor just outside the walkout basement door. The walkout basement is being used as a master bedroom by the current owner (with a second  $\frac{3}{4}$  bath on this lower level). There is also a laundry room in the lower level.



**T**his home is unique: very few homes in the town of St. James have a view of the harbor like this. If you like the idea of watching the boats come and go, and seeing sunrises and moonfalls, this could be your perfect retirement spot, a very nice summer home, or an excellent rental property.



The finished area downstairs can be a spare bedroom, family room, or any other use you might desire. The house has over 1,740 ft<sup>2</sup> of finished living area – plus an attached one-car garage. It recently underwent extensive improvements by the owner/builder Mike Collins. A new roof, new electric hot water boiler, and new, long-lasting shake shingles were installed last year. In 1989 a new deep well was put down, and in 2001 a new septic system was added. New landscaping and walkways were put in, and a double-insulated dog door was installed in the basement to a 15' x 100' dog run. New floor coverings installed on both levels, and a new stove and refrigerator is in the kitchen. Because this is some of the most valuable lake frontage on Beaver Island (a minimum of \$2,000 per front foot), this house is a tremendous opportunity. Price drastically reduced this month to \$299,000.

Contact owner and Agent Michael Collins / Ed Wojan Realty

phone: 231.313.8739 email: [Mjc3855@gmail.com](mailto:Mjc3855@gmail.com)



## 32. RHYMING YOUNG

*Isabel Soden, 8 years old, from IL was a guest of Robb and Christa (Stein) Leone in August. When she returned to school, her first assignment was to write about the highlight of her summer. The following is her poem:*

### **The Beav**

For a week in August I vacationed with my family at an island in Upper Michigan  
Beaver Island to be exact,

We met up with two other families and for that one week in August we had the time of our lives

My parents planned an "Amazing Race

We finished each task and went to every location and kept up a good pace

When we tubed it was insane how high we went when Robb did a whip lash

Someone always went in with a ginormous splash

Another highlight of our trip was the toy store

It was a store filled with invisible ink, and candy galore

The kids rode all around town on rented bikes

We also went on a lot of sandy hikes

Mount Pisgah was a really big sand dune

We climbed so high that we felt like we were touching the moon

Dalwhinnies was a very yummy restaurant and when the cinnamon rolls ran out

I was sad but ordered a sticky bun instead and didn't have to pout

At Daddy Franks the ice cream was creamy scoops so round

It actually weighed a pound

On a day trip to Garden Island we danced on the boat docked

We fished for tadpoles, played loud music and rocked

The highlight of my trip was zooming on the jet skis so high

I felt like I could fly and it was hard to bid the Island goodbye.

## ISLAND EVENTS

November 13 – **Holiday Bazaar** at the Gregg Hall, for a table call 448-2963

November 19 – **PABI John Deere Raffle** Drawing to benefit the Beaver Island Community Center. There is still time to get your chance - 2022.

November 24 – **Thanksgiving Dinner** at the Gregg Fellowship Hall

Worship leaders at the Christian Church:

Nov. 13 and 20: Pastor Harold Kruse;

Nov. 27: Pastor Howard Davis

December 8 – **Cookie Carnival** at the Gregg Hall

December 18 – **Irish Christmas in America** at the Community Center.

## VAN & GEO RENTAL

### PICK UP AT BOAT OR PLANE



Multi-Day Discounts  
4 HR. Rates available

**Call: 448-2300**

**BEAVER ISLAND MARINA**

E-MAIL: [Pat@BeaverIslandMarina.com](mailto:Pat@BeaverIslandMarina.com)

## Beaver Island Marina



At Your Service:  
Transient Slips  
Fuel - Charts - Shipstore  
Auto & Boat Repair  
Licensed Mechanic  
Storage & More

**Gas Station and Car Rental  
Gold Card Savings**

Check out our ship store: Gifts, Bait, and More.

**25860 Main - P.O. Box 76 - Beaver Island, MI 49782**

**MARINA (231) 448-2300 - FAX (231) 448-2763**

**AUTO / REPAIR SHOP (231) 448-2307**

**[www.beaverislandmarina.com](http://www.beaverislandmarina.com)**



Several members of the NRESC recently met with Rex Ainsle and Brian Mastenbrook of the DNR and two MSU professors in the school of Human Resources and Labor Relations, John Beck and Julie Brockman, who had offered to facilitate the creation of a Natural Resources Management Plan. They are part of a five-professor group which has been facilitating for various businesses, nonprofits, and government agencies for the past twenty years.

Beck and Brockman spoke about the MSU program and what they hoped to accomplish, and to avoid. They were clear about having no private agenda and wanting to see a plan emerge from Beaver Island that represented the considered input from all quarters. "This is your Island. It will be your plan; you own it," they said.

They stressed that arriving at a plan involves a lengthy and complicated process. In the course of their study they have discovered how easily these

efforts can go astray. While every group is different and the process will be different in each application, they have learned how to straighten the line between initial hopes and the achievement of a goal. "This is our day job," they said. "We've gotten good at it."

One of the first steps would be to "put all the givens on the table" – to understand all the factors at play. Public input is important to help identify the givens – the factors and forces which aren't always obvious. They talked about being able and willing to help by conducting individual interviews or hosting a group meeting of Island stakeholders, including the young. "We have found that people already have the answers," they said. "They just have to be elicited, and synchronized." They could host a meeting at which they were the only ones over eighteen in the room.

The DNR said it would not try to control the process. They want a plan

representing the wishes of the people, encompassing public and private lands.

The professors reiterated that they are not compromisers, that their response to apparent polar oppositions is to plumb both positions in search of shared values from which reconciliation might be built.

The next step will be determined at the November NRESC meeting. If the decision is to go forward with them, there will be a six-hour session, possibly in early to mid December, to elicit and organize input and ideas from everyone concerned with our natural resources.

The process might last for a year to a year and a half. Each next step will be tailored to fit our unique situation and then proposed to NRESC before being taken. NRESC may request further modifications. The Town Boards will ultimately call the shots. MSU's role can be curtailed at any point if the Island so chooses.

## M. Collins Construction Inc.

Beaver Island Licensed Contractor for 22 years

New Homes, Additions, Remodeling, Garages,  
Pole Barns, Metal Roofs, Siding, Window  
Replacement, Sips, ICF's, Cellulose and Design

Michael Collins  
36860 Mossi's LN.  
Beaver Island, Michigan 49782

Phone/Fax (231) 448-2923  
Cell (231) 313-8739  
Email: mjc3855@gmail.com



*We are more than just a laundromat and carwash!*

We store boats, cars, campers, household items,  
construction materials...

### YOU NAME IT, WE CAN STORE IT!

We have affordable month to month rates,  
9 month rates, or yearly rates.

Hurry, space is limited!

Call us for more info at **448-2235** or **448-2050**



## Gregory Larson Architect

*Offering Quality Architectural Design Services to  
Beaver Islanders for over 25 Years*

1514 Mifflin Street  
Huntingdon, PA 16652 Phone: (814) 643-5053  
greglarson1@verizon.net Fax: (814) 643-0972

## B I C eaver sland onstruction

- Custom Homes
- Garages/Additions
- Remodeling/Siding
- Painting, In & Out
- Decks/Roofing
- Handyman Service

### KEVIN WHITE, GENERAL CONTRACTOR

State Licensed & Insured

*call* (231) 448-2058

*"No Job Too Small"*



# Emerald Isle Hotel

[www.emeraldislehotel.com](http://www.emeraldislehotel.com)



**Very Nice Rooms  
with kitchens  
& Apartment Suites**



**Right on the edge  
of Town, the Island's**

**newest Hotel**

**one block from the Ferry Dock**

**Conference Room . Free WIFI Internet access**



**for reservations, please call 231.448.2376**

*Ecclesiastes 3:11* He has made everything beautiful in its time.

He has also set eternity in the hearts of men.

## Lighthouse Fellowship

Services every Sunday at  
9:30 a.m. at Peaine Township Hall, with  
Sunday School for children at the same time.

## Charlevoix State Bank

*Your Hometown Community Bank*

*Local service you can trust on Beaver Island*

*Beaver Island Branch September - November Hours*

*Monday - Friday 9:00 a.m. - 1:00 p.m.*

### 5 Locations :

**Main Office 547-4411**

111 State St. • Charlevoix

**Beaver Island 448-2190**

38230 Michigan Ave. • Beaver Island

**East Jordan 536-5511**

100 Main St. • East Jordan

**Ellsworth 588-2211**

9136 Main St. • Ellsworth

**Drive-up Only**

102 M-66 • Charlevoix

*Internet Banking . Bill Pay . Personal & Business Banking*

Member  
FDIC



1-800-547-6080 • [charlevoixstatebank.com](http://charlevoixstatebank.com)



by Amy Hubbell

"Perhaps they are not the stars, but rather openings in heaven where the love of our lost ones pours through and shines down upon us to let us know they are happy."

It has been extremely painful to say goodbye to Logan Marie, our beautiful girl. The McDonough and Jarvie families would like to extend our sincerest gratitude to family, friends, and strangers for helping us grieve, and soothing our hearts.

With pleasure we share the following article, written by Amy Hubbell. Her words have deeply touched our family.

"The world stopped turning for a few minutes last week. Like a skipping stone that ripples a calm pond. The impact of 15-year-old Logan McDonough's death was felt first in the Glen Lake community and reverberated throughout northern Michigan.

"Locally, friends, classmates and parents came out of the initial shock of losing someone so young and vibrant to support those who need it most at this time — her parents, Todd and Julie, sister Casey and little brothers, Peyton and Brady.

"Immediately upon learning of the tragedy, school officials gathered students together Tuesday evening to console one another. Even as students began to grapple with Logan's death and, in turn, their own mortality, parents and friends organized meals for the onslaught of family from Beaver Island and beyond who would come to pay their respects to the high school sophomore.

"This with no fanfare, no commo-

tion. Simply a gesture of love made behind the scenes.

"The same emotion drove hundreds of people to join seemingly endless, serpentine lines to pay their respects Thursday night. It also moved an estimated 1,800 people to crowd into the Glen Lake gymnasium to bid a tearful goodbye to someone who went too early and provide comfort to the family whose life will never be the same.

"The Rev. Pat Cauley of Holy Cross parish on Beaver Island had a tough task ahead of him as officiant at the funeral. A longtime friend of the McDonoughs, in a tear-strained voice the priest asked those attending for prayers so that he could get through the emotional service. Fr. Cauley didn't tiptoe around it: Logan's death is a tragedy. Something you don't hear often from the clergy. Neither did he use the cliché that it was "God's will."

"Instead Fr. Cauley spoke of love demonstrated in response to Logan's accidental death. The outpouring of support from students for whom Logan's death served as a revelation that they won't live forever: from parents who like the McDonoughs, kiss their children good-bye each morning, assuming they'll see them at dinner time.

"Support came not only from people within the county but also from others outside the Leelanau Peninsula. Among those in attendance Friday were students from Leland, Lake Leelanau St. Mary and Traverse City St. Francis, the Traverse City Central soccer team, and the NorthStar '94 club soccer team.

"The McDonoughs, a family deeply involved in Glen Lake athletics, didn't stay shuttered in their home for long. There was more love shown at the Laker football game Friday night when the entire football team presented them the ball used in the first touchdown against Messick. Upon arriving at the field, it probably didn't take long for the family to see that the Lakers had added purple to their uniforms in honor of Logan on their helmets and socks. It was her favorite color. The coaching staff also donned purple caps.

"There was also 20 seconds of silence before the game to remember Logan, who wore No. 20 on her soccer jersey in the spring. Perhaps most touching, however, was an invitation from the football team to have the McDonoughs' picture taken with them after the victory.

"It was as if the community was trying to put a "group hug" on paper.

"The journey toward grief recovery is sure to be long for Logan's family. Please keep the McDonoughs in your prayers.

"Prayers are also encouraged for Logan's friend, Lane Rudd, who was the driver in the accident that resulted in her death.

"Lane is also grieving for his lifelong friend to whom he offered a ride home last Tuesday. The world stopped for him, too."

*"None of us can do anything great on our own, but we can all do a great thing with great love"* — Mother Teresa

(submitted by Skip McDonough, with permission from the Grand Rapids Press)

## HELP GUIDE THE HEALTH AND PHYSICAL WELL-BEING OF THE ISLAND: BIRHC SEEKS BOARD APPLICATIONS

The Beaver Island Rural Health Center is seeking applicants interested in serving on its board of directors. Board positions will be filled at the annual meeting, Saturday, January 21, 2012.

Board terms are for three years and directors are not compensated. The BIRHC board meets every other month on the third Saturday. Directors are

expected to attend most of the meetings, either in person or by speakerphone.

Candidates should be team players who will champion the cause of the Health Center and be willing to contribute their time and talents to board activities, including fundraising. Full or part-time residents are encouraged to apply by letter to the BIRHC Selection Committee, P.O. Box 146, Beaver

Island, MI 49782.

For more information, applicants may contact Donna Kubie, Managing Director; Denny Cook, President; John Martin, Vice President; or John Works, Secretary. Candidates should send or drop off a letter which states their interest and tells a little about themselves by the deadline of December 21, 2011.



## CHARLEVOIX'S BEST Beaver Island Resident Rates



Make the Weathervane Terrace Inn & Suites part of your Beaver Island commute. **Only Island residents** receive discounted lodging rates all year.

FREE Deluxe Continental Breakfast  
In-room Refrigerator & Microwave  
Wireless Internet Access (*free*)  
Outdoor Pool \* Indoor Hot Tub Spa Tower  
All Rooms have 25" TV/VCRs

**RATES FROM \$47.00 off season**

**Weathervane Terrace Inn & Suites**

231-547-9955 • 800-552-0025

One Eleven Pine River Lane  
Charlevoix, Michigan 49720

*Discount available to island residents only. I.D. required*

## Store your Stuff



24 by 15 ft garage.  
**Rent** by the month,  
season or year.  
You get the key.

## BIG STUFF ?

One price covers the winter. 7 mo.



**Oct 1 to May 1**  
18' by 7' \$220.00  
20' by 8' \$250.00  
25' by 8' \$350.00

Call for rate on yours

SAFE, INSIDE & DRY for the winter

2 miles from town on Kings Hwy

General storage by month, season or year

Call Don 231-547-2393

## PRIME 20 ACRE WOODED BUILDING SITE:

Just out of town near Font Lake. ¼ mile road frontage, power, clearing with old apple orchard, lots of deer. Fabulous home site close to St. James but very secluded. Price reduced to \$80,000.

Contact owner (616) 240-8980  
or [erik844@comcast.net](mailto:erik844@comcast.net)

## 36. SEE IT GROW

**O**ver 45 people attended the Wellness Garden Walk on October 2<sup>nd</sup>.

Although it was not a scheduled event on most calendars we decided to invite the public to come by and see what we have done over the past few months. They wandered the various paths and were guided by signs and given more details by Connie and Leonor. Some kids came with parents to show them where the Fairy Garden was being worked on. Some seniors came to see the new path lined with burning bushes (courtesy of Sue Welke), lilacs, and hydrangeas that leads to the back of the Forest View Senior Apartments. Many were struck by the colorful array of Marianne Weaver's Butterfly Garden. Several noticed the homemade birdhouses in Gail's Garden (from Cheryl Podgorski). Others asked about

the newly donated original art work from Doris Larson (Greene Town Gate) which was being auctioned off in the Health Center Lobby on Friday November 3.

The Pink Garden had a sign showing an addition being planned this fall by Pam OBrien to include 250 pink bulbs donated by BJ Wyckoff, as well as pink irises from Jean Carpenter and pink phlox from Joyce Erber.

Alana and Bob Anderson's day lilies now line the front entrance of Forest View as well as more yarrow and salvia from Joyce and John Erber. The WhiteGarden has been anchored with lilac and deutzia and will be finished in the spring. Joyce Runberg's white phlox, Joanne Cashman's white roses and white irises from Ruth Igoe will be included in here with a plethora of other lovely plants raised in Heidi's BI

## REAL ESTATE, FOR RENT

**ONE BEDROOM, ONE BATH ROOM UNIT ON FOX LAKE** with full kitchen, and laundry - Sleeps two and is 20 minutes from town. Canoe and paddleboat available with balcony overlooking the lake. \$600/week. Contact Sue at [cabinbythelake1@gmail.com](mailto:cabinbythelake1@gmail.com) No smoking and no pets please.

**CONDO FOR RENT** - Furnished Seasonal rental for 6 months. 2 BR Condo at Harborview. \$400. monthly plus electric. References. Call (231) 547-4580 or (231) 675-2555.

**LOG CABIN ON SAND BAY** - pets allowed. 2 BR, 1 bath: \$500. Call (734) 449-0804 or email [dlelzey@gmail.com](mailto:dlelzey@gmail.com)

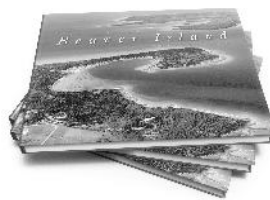
**A HOUSE RENTAL** - Cute 2 bdrm house in woods near town, public beaches, and bike path. Screened porch. Washer, dryer. No pets, no smoking. \$595/week. Call (231) 871-0477.

**A GREAT HARBOR VIEW** - from a great "in-town" trailer. Perfect for a couple of working people. 2 bedroom, 1 bath. Furnished and fully equipped kitchen. \$1500 a month. Please call (231) 448-2235 for reservations or more details.

**DONEGAL BAY** - 3 BR 2 bath Home; sleeps 6; many amenities. \$980 a week. Reduced rates for off-season. Phone (313) 885-7393, after 4:00 p.m.

## Life in the Beaver Island Archipelago

*The new 208-page full color hardcover Beaver Island Book*



Name \_\_\_\_\_

Address \_\_\_\_\_

City \_\_\_\_\_ State \_\_\_\_\_ Zip \_\_\_\_\_

\_\_\_\_\_ Number of books \$35.00 per hardcover book,  
including shipping

*If you would like a gift card sent:*

A Gift From \_\_\_\_\_

Message \_\_\_\_\_

Please Mail to: Paradise Bay Press . Box 52, Beaver Island, MI 49782



Gardens.

Many were impressed with the new sprinkler hoses and watering spigots mounted throughout the areas (donated by Martin Well, Robert's John Service) and buried by Garrett Cole and Jerry LaFreniere.

Of course they were offered treats donated by Nancy and Roger Sommer (Daddy Franks) and hot dogs and chips from Marilyn and Liam Racine (Stoney Acres). Kate Garland did a wonderful job of including everyone in a walkthru at the Forest View Apartments after serving them the ice cream.

The beautiful weather we had after four continuous days of rain made the day even more special! Thanks to Dana and Eric Hodgson we were able to announce the event with our newly donated road signs.

There only remains a few more

flowers to plant and wood chips to spread before we put the garden to sleep for the winter. We could not have accomplished all of this without the additional help of Dana D'Andreia, Ruth Igoe, Sara McCafferty and kids, Pete Lodico, The Lighthouse School staff and students, Jacque, Patti and Judy Boyle with the Rangers, Barbara Rahn, Barb Spencer, Michele LaFreniere, Pam Moxham, Jon Bonadeo, Brandon Maudrie and of course as mentioned in August, the people who turned out for the Garden Tour and Auction which raised over \$2,500 this summer to cover the costs of all that was purchased. Thanks Beaver Island Community! This is your Wellness Garden. Come by and use it; Relax, Reflect, Renew yourself.

— Leonor and Connie

**WEEKLY RENTAL** - Lakefront. "The Last Resort" 2 BR house on Sand Bay, great view, beautiful sunrise, laundry pair, 1 1/2 bath. Phone Bill McDonough at (231) 448-2733 (days).

**SAND BAY - "BAY HAVEN" COTTAGE - WEEKLY RENTAL** - Lake Front, Sandy Beach, 5 br, great view, laundry. East Side Dr.—only four miles from town. Awesome sunrises — walk to beach is straight and flat out the lower level. Please call Laurie Bos at (616) 786-3863 or lauriesbos@chartermi.net Photographs of Bay Haven can be seen at: [www.bayhaven.beaverisland.net](http://www.bayhaven.beaverisland.net)

**WATERFRONT COTTAGE** - On the east side. Available by the week or week-end. One BR, full kitchen and bath. Enjoy the water and the woods, year round. Off-season rates. Complete privacy. (231) 448-2907.

**SAND BAY** - sleeps 8—amenities—available May- September \$950.00 wk plus security deposit. (231) 582-5057 or email [robin@robinleeberry.com](mailto:robin@robinleeberry.com)  
**DONEGAL BAY COTTAGE** - Nicely furnished 3 BR, 1 bath, washer/dryer. On dune w/ beach access. \$775/ July & August \$600 off-season weekly. Dana Luscombe (248) 549-2701 eve or [dana.luscombe@gmail.com](mailto:dana.luscombe@gmail.com) *continued on page 38.*



**The Convent**  
*in the Village*  
**Beautiful Harbor View**  
 Sleeps 15 - 7 Bedrooms w/ sinks  
 Fully-equipped Kitchen  
 Beach Access  
 Great for Multi-Family Groups,  
 Family Reunions, Business Retreats  
 Open Year Round. Weekly Rental, Saturday-Saturday, in season  
 3-night minimum off-season  
**Call 448-2206**  
 (Pam O'Brien)

### COMBS COTTAGE ON SAND BAY:

Charming beachfront cabin nestled in the woods 50 yards from the water, 4 bedrooms, 2 baths, full kitchen, washer/ dryer, queen beds in 3 rooms with two sets of xl-bunks in the 4<sup>th</sup>. Satellite TV. Perfect for families. \$900. Security deposit. Available June-Sept. Website: [www.combscottage.webs.com](http://www.combscottage.webs.com) email: [combscottage@ymail.com](mailto:combscottage@ymail.com); or call Nancy at (719) 599-3147



## Beacon Subscription: ☐ New ☐ Renewal ☐ Gift

Name \_\_\_\_\_

Address \_\_\_\_\_

City \_\_\_\_\_ State \_\_\_\_\_ Zip \_\_\_\_\_



☐ \$30.00 / Year (Standard Rate Mail)


☐ \$45.00 / Year (First Class Mail)

*If you would like a gift card sent:*


A Gift From \_\_\_\_\_

Message \_\_\_\_\_

Please Mail to: The Beaver Beacon . Box 254, Beaver Island, MI 49782



**A BLOCK FROM TOWN, A BLOCK FROM THE BEACH:** 3 BRs, 1 bath; wireless; \$625/week; call (231) 313-6225 or email [abbieswest@yahoo.com](mailto:abbieswest@yahoo.com) [www.abbieswestcottage.com](http://www.abbieswestcottage.com)







**HARBOR LIGHTS:** Unique log home looking out over Paradise Bay. Beautiful views of St. James Harbor, Garden, and Hog Islands. Enjoy the boats from the huge deck, or sit around the fire pit on the beach. Very secluded, sitting among lush cedars and pines. 3 bedrooms with 2 queens and 2 twins. One large bathroom and one half bath. All the amenities you could ever need. Immaculate home with "spectacular" views. \$1,150 a week. Home (630) 834-4181 Cell (630) 995-0507 harborlightsbim@aol.com



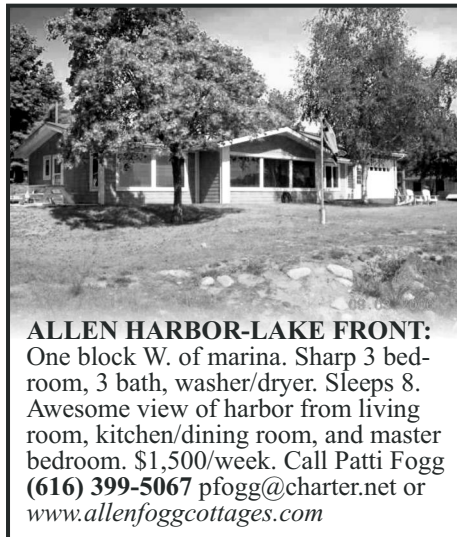
**WATERFRONT HARBOR HOUSE FOR RENT:**

Spectacular view of Paradise Bay! Large home with all the amenities, linens provided. 4 bedroom, 2½ baths, sleeps 8, washer/dryer, fully equipped kitchen, satellite tv. June – Sept. \$1250 a week. Short walk to the Stoney Acre Grill. Please call (231) 448-2235



**SPARKLING HARBOR VIEW:**

Welcoming cottage perched on a bluff overlooking and with a beautiful view of the harbor. Less than a mile from the ferry. This up-to-date cedar-paneled cottage is comfortably furnished and contains 1 full, 2 twin beds, plus daybed. Short walks to beautiful beaches and the activities and amenities of town. Dogs welcome. Bikes, tv/vcr, microwave and Weber grill. \$725 a week. Call Mike at (734) 769-7565 or (734) 475-6178 or mschroer@a2mich.com



**ALLEN HARBOR-LAKE FRONT:**

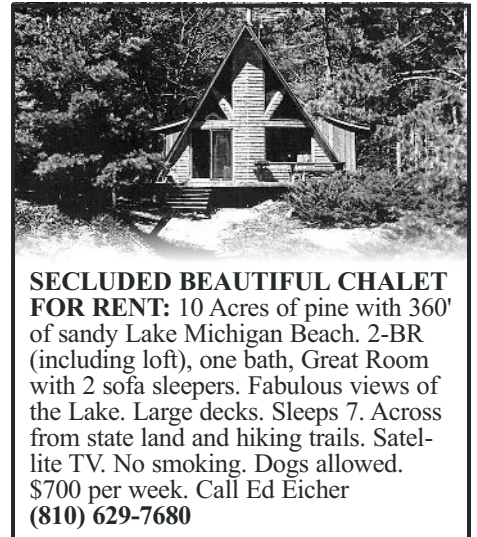
One block W. of marina. Sharp 3 bedroom, 3 bath, washer/dryer. Sleeps 8. Awesome view of harbor from living room, kitchen/dining room, and master bedroom. \$1,500/week. Call Patti Fogg (616) 399-5067 pfogg@charter.net or [www.allenfoggcottages.com](http://www.allenfoggcottages.com)



**LAKEFRONT:** 2 bedrooms, 2 baths + large lower level with sleeping for 6. Sleeps 12 total. Washer/dryer, bikes, kayaks, wrap-a-round porch, views of sunset & Garden & Squaw Islands. \$1400/week. (773) 663-7772. Website: [www.LinnsLakeLodge.com](http://www.LinnsLakeLodge.com) E-mail: [Info@whatproperties.com](mailto:Info@whatproperties.com)

**COTTAGE ON BEAUTIFUL FOX LAKE** - One bedroom, one bathroom, full kitchen, laundry with bunkhouse. Cottage sleeps six and is 20 minutes from town. Dock, rowboat and deck overlooking the lake. \$700/week. No smoking and no pets please. Contact Sue at [cabinbythelake1@gmail.com](mailto:cabinbythelake1@gmail.com)

**THE FISHERMAN'S HOUSE** - Great 'In-Town' location across the street from St. James Harbor. Four bedrooms, three with double beds and one with twin beds, two bathrooms, bed



**SECLUDED BEAUTIFUL CHALET FOR RENT:** 10 Acres of pine with 360' of sandy Lake Michigan Beach. 2-BR (including loft), one bath, Great Room with 2 sofa sleepers. Fabulous views of the Lake. Large decks. Sleeps 7. Across from state land and hiking trails. Satellite TV. No smoking. Dogs allowed. \$700 per week. Call Ed Eicher (810) 629-7680



**ON THE HARBOR:** Furnished upstairs apartment overlooking beautiful Paradise Bay. 1 bedroom, 1 bath, fully equipped kitchen. Porch and deck area on the harbor with possible dock slip. \$800 a week. Please call (231) 448-2235 for reservations or more details.



linens and bath towels provided, fully equipped modern kitchen, washer/dryer, TV, enclosed porch, and open deck with grill. For availability, call Bill or Tammy (231) 448-2499 or (231) 448-2733 or [tammymcd107@yahoo.com](mailto:tammymcd107@yahoo.com).

**SECLUDED 1940s LOG CABIN** just one block from lake and market on one acre - Sleeps 4-6, pets welcome (\$100 deposit.) Washer, Dryer & linens furnished. Bicycles, canoe, grill available \$700/wk; weekends available. (219) 863-2655 or email [cehlah@urhere.net](mailto:cehlah@urhere.net)

## REAL ESTATE, FOR SALE

**WATERFRONT HOME FOR SALE**

- 3 BR, 1¾ bath, at Sand Bay. Sandy beach, 2 lots: 1 w/ recently remodeled home and garage, 1 w/ large pole barn. Just appraised at \$285k. Call (231) 448-2034.

**FOR SALE: PORT OF ST JAMES, LOTS, 717 & 716** - perked, 716 well, septic, and drive approved. First \$12,000 takes both lots. Firm. (231) 854-9831

**FOR SALE, 11 ACRES ON EAST SIDE DRIVE** - good land, 357' on road, 1373' deep; \$28,900. Phone (231) 448-2545.

**10 ACRES OLD FOX LAKE ROAD** Beautiful, wooded, great building site; \$39,000. (231) 409-1214.

**LOTS 644 AND 645 PORT OF ST. JAMES** - Nice corner lots. \$19,000 for both. (231) 448-3088.





**ISLAND AERIE:** Overlooking harbor next to Nature Preserve, easy walk/bike to town, 3 bath, 4 BR; sleeps 12 w/ 2 king and 10 twin beds, large 1<sup>st</sup> floor decks, 2<sup>nd</sup> floor wet bar and deck, 3<sup>rd</sup> floor game room, all modern amenities and appliances, great for multiple families and groups. \$1800/wk, reduced off-season and extended-stay rates. Call John and Jan (989) 560-8639 [www.islandaerie.net](http://www.islandaerie.net). Jan@islandaerie.net



**JUDE'S RENTALS:** Pleasantly situated in the heart of it all! Jude's house is nestled among the peaceful nature of Beaver Island in addition to being just walking distance from the harbor, historical museums, shops, restaurants and the beach. Call Jude Martin (231) 448-2673 or (616) 726-2432



**SAND BAY COTTAGE - ON THE LAKE WITH GREAT BEACH-FRONT:** Sleeps 6. Two bedrooms and loft, 1 bath. Modern kitchen, fireplace, washer/dryer, grill. Deck and screened-in gazebo. No pets, no smoking. \$800/week. Call Sue on (231) 448-2670 or [cabinbythelake1@gmail.com](mailto:cabinbythelake1@gmail.com)



**DONEGAL BAY COTTAGE:** 3 BR, 2 BA, full kitchen, W/D, fireplace, secluded patio & deck surrounded by pines and bluff and overlooking one of Beaver Island's best beaches. \$850 per week June-September; winter rates available. Call (734) 996-3973 or [loonlookout@comcast.net](mailto:loonlookout@comcast.net) [home.comcast.net/~loonlookout/site/](http://home.comcast.net/~loonlookout/site/)



**SHORTY'S PLACE:** In town with a beautiful view of the harbor and our beach lot across the street. 3 bedroom, 2 bath, sleeps 6. Dalwhinnie and McDonough's within walking distance. \$1,200 per week. Call Patti Fogg: (616) 399-5067 [pfogg@charter.net](mailto:pfogg@charter.net) Website: [www.allenfoggcottages.com](http://www.allenfoggcottages.com)



**7 PINES - Weekly Rental.** Close to town (short walk to Dalwhinnie) Sleeps 6, 1½ bath, washer/dryer, linens furnished, freshly remodeled, *DOG friendly*, \$750/week, Contact Gretchen Fogg at (616) 318-1424 or [gabf24@gmail.com](mailto:gabf24@gmail.com)

**HAGGARD'S SUMMER RENTAL HOME -** Overlooks Paradise Bay across from the Maritime Museum. Sunset view of harbor and village of St James is a winner. Comfortable custom home sleeps 8-10. 3 baths. Public sand

beach close by. Well mannered pets welcome. Only \$1,200 per week. Call (231) 547-4046 (day) (231) 547-6600 (evening) or email [samhunt59@yahoo.com](mailto:samhunt59@yahoo.com)

**LOCH WOOD SHORES -** About four miles from town on the beach of Sand Bay. 3 bedrooms, 2 with double beds, 1 with two twin beds, one and a half bath, w/d, full kitchen, gas grill, large deck that you step off onto the beach, gas fireplace, and a gorgeous view of Lake Michigan. Call (231) 448-2733 or 448-2499.

**40 ACRES ON SLOPTOWN ROAD -** Call Bud at (231) 448-2397.

**2 LOTS ON SAND BAY -** 3.3 Acres each. 1700' deep. Sandy Beach Frontage 117' each. (810) 629-7680 or (231) 448-2257.

**TWO LOTS IN THE PORT ST. JAMES - NEAR FONT LAKE.** Perked, wooded, buildable. #708 & 709; electric and phone right

there. \$14,000 each. Call Peggy at (269) 671-5557.

**20 ACRES WEST SIDE ROAD -** \$55,000; 16x18 rustic cabin (no electricity or water); Apple orchard and deer blinds; great location for hunting; ½ mile north of Fox Lake Rd; contact: Mike Eicher (248) 766-4205.

**TO PLACE AN AD -** (231) 448-2476 or email [beacon@beaverisland.net](mailto:beacon@beaverisland.net)

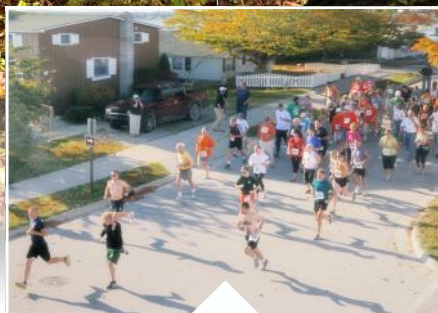


**BEACHFRONT HOUSE FOR RENT:** Exciting cottage with view of High Island from large deck. Open floor plan, huge windows on extremely private beach. 2 BRs with 2 full beds + loft with 2 twins. 1½ baths, TV/VCR, W/D, microwave, gas grill, all amenities. \$1200/week; spring & fall \$895. Limit 6 people. Please call (941) 921-2233 or (317) 769-6563



**NORTH SHORE 300' BEACH FRONT:** Newly remodeled Sunset Cabin overlooking Garden Island. Charming cabin with 3 season porch has Queen, Full/Twin bunk-bed and sleeper sofa. Located on Pine Street, easy walk to town. \$1,000. a week June through September. No pets please. Call (231) 448-2050 for more info.





# B E A V E R I S L A N D N O V E M B E R 2 0 1 1



P.O. Box 254  
Beaver Island, MI 49782

[www.beaverbeacon.com](http://www.beaverbeacon.com)

ADDRESS SERVICE REQUESTED

STANDARD RATE  
US POSTAGE PAID  
BEAVER ISLAND, MI  
49782  
PERMIT NO. 3