

June 2009 \$2.75

Beaver Beacon

The Island Monthly Since 1955



THE PREHISTORIC AMIDST US
WE HAVE LIFT-OFF



Dalwhinnie

The meeting place

Fresh bakery items daily, espresso, cappuccino, deli salads, sandwiches, pizza, ice cream, soft drinks, and much more! Eat in or take out. (231) 448-2736.



McDonough's Market, Inc.

Since 1933
On America's "Emerald Isle"
38240 Michigan Avenue
Beaver Island, MI 49782
(231) 448-2733

Full line of groceries. Custom-cut meat.
Fresh produce, Beer, Wine, Liquor, Block & cube ice.
Movie rentals. Post cards. Beaver Island clothing,
Hardware, Toys, Public Telephone.
Small & major appliances, Greeting cards,
Notary service. Michigan lottery.
Fax, Money orders & transfers, Island maps.
www.mcdonoughsmarket.com



CARY CONCRETE LTD

GREG CARY - OWNER LICENSED BUILDER

- | | | |
|--|-------------------------------|--|
| • Automated
Batch Plant | • Driveways | • Basements |
| • Redi-Mix | • Sidewalks | • Fireplaces |
| • & Insulated
Foam Poured
Walls | • Concrete
Pouring | • Unlimited
Masonry
& Cement
Supplies |
| | • Garages | |

CALL NOW

FOR A FREE ESTIMATE
231.448.2242

CARY CONCRETE LTD . 36520 KINGS HWY . BEAVER ISLAND, MI . 49782

SCHWARTZFISHER

STONeworks

Quality Work Done on Time

EXCAVATION

- Site Clearing
- Driveways
- Basements
- Septic Systems
- Pump Back Systems
- Screened Top Soil

MASONRY

- Block Work
- Flat Work
- Rock Retaining Walls
- Chimneys
- Stone Work
- Fieldstone Courtyards

WELDING

- Mig
- Tig
- Aluminum
- Stainless Steel
- Plasma Cutter
- Steel Fabrication

DAVID SCHWARTZFISHER, OWNER
27540 BARNEY'S LAKE ROAD, BEAVER ISLAND MI 49782

(231) 448-2706 OR 448-2102



News from the Townships	4.
Par For the Course	9.
Doing Community Service	10.
View from One End	14.
What the heck is HDR?	16.
A car, a tree, music, and a plane, Carnac	18.
Christening the new-born School	22.
Outa Here, for now	24.
This year's enlightening Nature Walk series	27.
Archipelago Challenge	28.
These kids can <i>act</i> (unless it was no act)	32.
One Hundred Years (and one minute) Ago	35.
It Really Happened (On This Date)	42.

On the cover: Pairs of Sandhill Cranes alongside the King's Highway (photographed here) and in other fields on the Island have a distinctive call, and with their large wingspan, a powerful soaring flight. The Sandhill has one of the longest fossil histories of any current bird, unequivocally 2.5 million and possibly 10 million years.

Beaver Beacon

the Island Monthly since 1955

published by

Paradise Bay Press

Beaver Beacon

Box 254

Beaver Island, MI 49782

(231) 448-2476

www.beaverbeacon.com

editors/owners

Jeff Cashman

jcashman@beaverisland.net

William Cashman

wcashman@beaverisland.net

contributors

Joyce Bartels

Richard Burris

Mitchell Osman

Antje Price

Frank Solle



The Beacon welcomes Island Stories, Articles, Photos, and Letters to the Editor. Thanks to all who call & email with news!

CHARLEVOIX'S BEST Beaver Island Resident Rates



Make the Weathervane Terrace Inn & Suites part of your Beaver Island commute. **Only Island residents** receive discounted lodging rates all year.

FREE Deluxe Continental Breakfast
In-room Refrigerator & Microwave
Wireless Internet Access (free)
Outdoor Pool * Indoor Hot Tub Spa Tower
All Rooms have 25" TV/VCRs

RATES FROM \$47.00 off season
Weathervane Terrace Inn & Suites

231-547-9955 • 800-552-0025

One Eleven Pine River Lane
Charlevoix, Michigan 49720

Discount available to island residents only. I.D. required

R. Gillespie Enterprises

P.O. BOX 217 • BEAVER ISLAND MI 49782



231-448-2577

Excavating * Road Building
Contracting * Licensed Builder

WWW.GILLESPIEENTERPRISES.COM

Martin Well Drilling

- Residential and Commercial
- Water Wells: 4", 5", and larger
- Modern Rotary Well Rig

Also ...

- Pump Installations
- Well Repairs

If you want a well now,
I have the equipment.

**Call Bud @ 448-2197
or 448-2397**



4. NEWS FROM THE TOWNSHIPS

St. James Township

The St. James Township Board considered its appointees to the 6-person (three from each township) Library Board at its May meeting. All three current Board members' terms had expired, but Patti Cull, Lil Gregg, and Sally Lounsberry were willing to serve again. Two other candidates for these positions were Audrey Beilman and Kathy Tidmore. Since the Library had been functioning well, the Board decided to reappoint the current members.

A single bid was received for posted jobs involving lawn care (Jean Wierenga) and gardening (Pam O'Brien), and were accepted.

The posted position at the Transfer Station had eight applicants. The Waste Management Committee pared it down to two, who were called in for interviews. One of the candidates withdrew his application, so the job was given to the other finalist, Amy Burris, who had worked there before and knew how to operate a forklift.

The Board had received a policy for competitive bidding from its attorney, who recommended it be reviewed every five years.

Some recommendations for improvements at the public restrooms were reviewed. The toilet fixtures should be replaced with handicap-accessible fixtures. Some cement blocks could be replaced with glass blocks to bring in more light. Air dryers

might replace the paper towel dispensers. New doors were recommended. The Board will put together a set of specifications so the work can be put out on bid.

The Board anticipated a (half share) bill of around \$2,800 for needed plumbing work at the Deputy's home.

The MTA stated that revenue sharing will be reduced to 2007's level and will probably be reduced again, and property taxes may also drop.

Dana Hodgson and Karen Johnson finished first and second in the three-person election to the School Board.

Pam Grassmick asked the Town Board to consider two resolutions for a) creating a 7-member Human Services Commission, and b) creating a Natural Resources Commission. The HSC might draw members from BICS, BIRHC, CoA, Hospice, the Townships, the Food Pantry, and other organizations. It could help coordinate and facilitate grant applications by these organizations, and address such problems as the county services available everywhere in the county except Beaver Island. "We have groups to protect cats and dogs, but not people," she said.

The NRC could include Jim Gillingham, the DNR, and the Tribe (now that new interpretations of the original Treaties are being made), and focus on eco-development as well as resource protection. It might push Beaver Island as a site for making ecological films because of the wide



BEAVER GEMS, INC.

- General Contracting
 - Specializing in commercial construction on Beaver Island
 - Homes
 - Crane Service
- We do projects from remodeling to cell towers!*

Call for more info: **231-448-2235**

fax 231-448-2740

email beavergemsinc@tds.net

web www.beavergems.com



St. James Marine Co.

Hauling • Salvage • Working Boat Repair

- Towing
- Hauling bulk freight to Beaver Island
- Delivery available
- Dust Control



Check Out BEAVER GEMS GIFT SHOP

specializing in Beaver Island apparel and nautical merchandise. 231-448-2888

variety of habitat here.

She distributed three memos on the *Phragmites* program. One was a month-by-month timeline. It called for copies of *Landowner's Guide to Phragmites Control* available and Peaine and the BIA's websites updated by June and the shoreline survey (Beaver, Trout, Hog, High, and Garden) underway by June 15. A second was a 15-point list detailing the nature of the shoreline survey, which will also identify the location of any Purple Loosestrife. This indicates the people, equipment, and time that are needed. The third listed other matters to be discussed during the 2009 treatment year.

Supervisor Don Vyse reported that an ad hoc committee had met with Cherry Capital Communications' CEO Tim Maylone to discuss his interest in providing high-speed wireless internet to Beaver Island.

Peaine Township

Pam Grassmick appeared at the onset of the Peaine Town Board meeting to request it consider joining with St. James to appoint two commissions (Human Services and Natural Resources) to allow their member organizations to have a united voice.

A letter was read from Kirk McBride criticizing the BIRHC's January meeting for having renewed the dentist's lease in a closed session. A letter from the BIRHC indicated its attorney had told them there had been

no damage.

A bid from Robert's John Service for work on the deputy's home was tabled to give an opportunity to other potential bidders. Jean Wierenga's bid for grass cutting was accepted.

The Zoning Board of Appeals had two vacancies. One current member, Donna Stambaugh, offered to serve again, and was re-appointed. The ZBA was asked to find an additional member.

One person, Krys Lyle (a current member), applied for the Planning Commission vacancy and was re-appointed.

There were five openings on the Trails Committee, and four applicants: Tina Morgan, Tina Walker, Sharon Hurkmans, and Darrell Butler Jr. All were appointed.

Information about vacancies on the Cemetery Committee was incomplete.

The only applicant for the *Phragmites* Administrator was Jacque LaFreniere, who was appointed to this post at \$20/hour. This year she'll work with volunteer Pam Grassmick.

Amy Burris was ratified as the third employee at the Transfer Station at \$12.75/hour, to work up to 38 hours/week during the summer.

Before the Airport Committee was discussed, Clerk Colleen Martin presented an opinion from the Township Attorney that indicated Paul Welke should recuse himself from voting for AC members because of a potential conflict of interest.

continued on page 6.



Beaver Island Rural Health Center



Dr. Jessica Carden is a third generation graduate of Palmer College of Chiropractic in Davenport, Iowa. She is from Leelanau County where both she and her husband practice chiropractic.

Dr. Carden offers gentle instrument adjusting as well as more traditional styles of care to suit patients of all ages. Nutritional supplements are available as well.

At the Beaver Island Rural Health Center
June 11/12/13 (Health Fair) & June 25/26

Feel free to call Dr. Carden at
(231) 334-3123 for answers
to all your questions.

Please visit www.ReviveChiropractic.com
Appointments can be made through the BIRHC.
Call 448-2275.

BURRIS MASO NRY

BRICK, BLOCK, STONE.
(231) 448-2213.

Now doing wells on Beaver Island!



(231) 228-5678

4" & Up Steel Wells

5" PVC Wells

Pump Sales & Service

Well Repair

Mark Zientek

John Zientek

NATIONAL WATER WELL ASSOC.

Certified Contractor

Fax (231) 228-5637

233 E. Kasson Rd.

Maple City, MI 49664

Ron Wojan - General Contractor Inc.



Quality Built Homes with
attention to detail and
customer satisfaction.

We build a variety of
projects from small cabins
to Lodges. We are a licensed
builder with over 25 years
experience on Beaver Island.

(231) 448-2400

36869 Kings Highway ■ Beaver Island Michigan 49782



- ✓ Licensed and Insured
Island-based Business
- ✓ Quality, Efficient, and
Professional Service
- ✓ Electrical, Voice & Data
- ✓ Residential & Commercial
- ✓ Plus, we're nice!

231-448-2093

Jean's Lawn Services

P.O. Box 284
Beaver Island, MI 49782

- * Lawn Care
- * Clean Up's



(231) 448-2915

Beaver Island Association

*Supporting Environmental
and Economic Sustainability*

Join Now! Keep in touch with
Beaver Island events likely to affect
you and your property.

Receive *Island Currents*, our
regular newsletter.

Visit our web site:
www.BeaaverIslandAssociation.org

Contact: Annette Dashiell,
Treasurer at (231) 448-2542.

 **Beaver Island Association**
P. O. Box 390
Beaver Island, MI 49782

6. *News from the Townships, from page 5.*

Paul spoke out to dispute that, pointing out that he had been in favor of the Municipal Airport acquiring additional land and so moving. He challenged the Clerk's authority to ask for an opinion (and indebt the Township) without first coming to the Board for its approval; she countered that she had brought the matter to the supervisor's attention three or four months earlier because taxpayers had asked her, and she had felt she had to act when no response was received and taxpayers continued to ask. Township supervisor Jack Gallagher believed the wording of the legal opinion was too vague and generalized to be useable to guide action in this specific case. Furthermore he said he had seen ample evidence of Welke detaching his views about Township matters from his personal business interests. Bud Martin said that because the small number of Islanders were so interconnected this type of potential conflict was impossible to avoid. Rachel Teague, Airport Manager and CEO of Fresh Air Aviation, stated that she felt letting Welke vote on AC members would give him an unfair advantage, but the supervisor disagreed. Bob Hoogendorn asked about the danger of ignoring a legal opinion. Welke wondered if anyone thought there was a conflict of interest with Colleen Martin on the AC and it buying fuel from her husband; she pointed out that the purchase had always been from the lowest

bidder.

With that settled, more or less, the matter of the three vacancies on the AC was addressed. The three current members (Colleen Martin, Terry Saxton, and Mike Scripps) had asked to be retained, but there were also five others seeking a seat. The supervisor recommended the Board appoint three new members, Kevin Boyle, Don Langford, and Bob Tidmore, to the AC, saying they "should not turn away people of this caliber." Their resumes were included in the packets distributed to the 32 people in the audience. Kevin Boyle had dealt directly with the FAA; aviation enthusiast Don Langford was a Board member of AeroMetric and is on the Executive Committee of Camden Aviation; and Bob Tidmore, as a fire protection engineer, was part of the design and project management of hangar fire protection systems at several airports. Treasurer Larry Kubic pointed out that the three new people could attend AC meetings and help with Airport projects even if they weren't on the AC. Jim Wojan, an AC member from St. James, said the current members had been very helpful and done a good job, adding, "If it ain't broke, don't fix it."

The Board voted separately on, first, the current members, and then the three suggestees. Scripps and Saxon were continued with 3 yes votes (Kubic, LoDico, and Martin), but Martin could not vote on her own nomination, which



Laurain LODGE

- ◆ Fine accommodations known for hospitality, quality, comfort and convenience for business or pleasure.
- ◆ Fully furnished housekeeping units with TV and cable
1 or 2-Bedrooms; king, queen, twin beds available
- ◆ Grand deck, grills, separate children's play area, campfire.
- ◆ 12-Ft. aluminum rowboats on four inland lakes for fishing, sightseeing (included with each room)
- ◆ Fresh, spacious rooms, pleasant gardens, wooded views.

Relax. Let the hospitality at Laurain Lodge help you enjoy
Beaver Island. It's why so many return year after year.

Visit our web site to see pictures: www.laurainlodge.com

Call today for reservations or information on island activities

Phone (231) 448-2099

38085 Beaver Lodge Drive, Beaver Island, MI 49782
Your Hosts, Larry & Theresa Laurain

Beautiful setting

**Within a short
walk to:**

Shopping
Dining
Public beach
Playground
Hiking
Museums
Tennis courts
Library

**Daily morning
coffee & donuts**

was deadlocked at 2 – 2 (Gallagher and Welke voting against). But the three new candidates were each defeated, 3 – 2 (Kubic, LoDico, and Martin voting no). So one seat went temporarily unfilled.

The supervisor urged the Waste Management Committee to begin an analysis of costs associated with the Transfer Station immediately in order to reduce cost and improve service.

The supervisor said that an investigation of the possibility of acquiring an RDA grant for wireless internet learned that we would not qualify because there is already DSL service on part of the Island. However a different federal grant might be obtained. If we can document that wireless will benefit the economy we might get some stimulus money; the rules will be finalized by June 1, and there will be 60 days in which to apply. Having an engineering study done would assist our application (as will our ownership of the towers), so he will discuss this with Cherry Capital Communication's Tim Maylone to see if the study he proposed could be done for less than \$20,000. Spending money on this study was approved.

The question of what dust control to use (Bay Dust Control's 38% at 88¢/gallon or St. James Marine's 26% at 53¢/gallon) was examined. Paul Welke had talked to two engineers, each of whom thought the 26% was a better deal because a local applicator would not have to put it on in bad conditions in

order to get equipment back on the boat (last year some of the 38% was put on during the rain and washed right off), it contained a wood fiber additive, and it was less corrosive to cars. Others were in favor of using the 38% solution. (It was mentioned that tapping our own brine with a deep well might cost a million dollars.)

The question of road gravel was examined. The CCRC provides some gravel, but the Township intends to purchase 2,000 yards for its own applications; it wants 23A with adequate clay (15 – 20%). The CCRC buys its gravel from Gillespie Enterprises at \$13.50/yard, but Gillespie has no more clay and will have to buy it, adding to the price. No one else is currently able to provide the needed gravel.

Sheets outlining operating procedures for all boards, commissions, and committees, and for purchasing guidelines, were distributed for study before the next meeting.

Charlevoix County passed an ORV ordinance making them legal (under certain conditions) on county roads—except Main Street from Four Corners to Whiskey Point on Beaver Island. Our townships can close any (or all) additional roads to ORV traffic, beginning on 7-17. So we have an opportunity in the next few months to observe ORV use and decide if we want to forbid them from any other roads. A public meeting at the Peaine Hall was set for 5-31-09 to discuss this. (See page 27.)

Paradise Bay Coffee Shop

Across from the Township Airport

*Featuring coffee, espresso,
specialty drinks,
Breakfast & Lunch*



Open every Saturday and
Sunday through June 14

Open every day June 18
through Labor Day

First Farmer's Market,
June 18, 9 to 11

*Serving Intelligentsia Coffee & Espresso
Rated #2 in the USA*

Convenience store food items,
DVD rental, Newspapers,
handmade jewelry & Souvenirs

Dale & Terry Keyes, Proprietors
231-448-3003



Charlevoix State Bank

38230 MICHIGAN AVE.
BEAVER ISLAND, MI 49782
(MEMBER FDIC)

SPRING HOURS

JUNE OPEN 9:00-1:00 DAILY

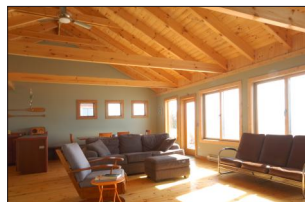
SUMMER HOURS

JULY-AUGUST OPEN 9:00-1:00 & 2:30-4:00 DAILY

WEATHER PERMITTING

(231) 448-2190

www.CharlevoixStateBank.com



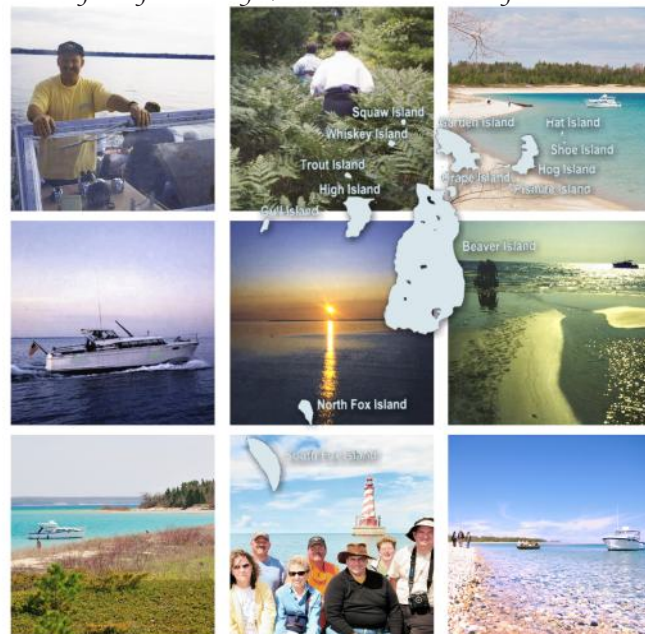
Commercial & Residential Construction
specializing in custom wood homes

Ernest Martin
Beaver Island Office
Phone 231-448-2074
Fax 231-448-2047

email: info@kmcontractorsinc.com
web: www.kmcontractorsinc.com

Bonadeo's Beaver Island Boat Charters

Enjoy hiking, camping, swimming, beach going, geo-cache and boating while exploring the beautiful, wild islands surrounding Beaver Island.



We provide half-day and full-day Guided Tours, memorable Sunset Cruises, as well as Water Taxi service for campers. jbonadeo@tds.net

(231) 448-2489

www.BeaverIslandBoatCharters.com

BEAVER ISLAND GARDEN

Open — Lots of Vegetables

"I dig Beaver Island Gardens"

Fantastic lineup of Vegetables - Herbs - Annuals - Begonias -
Geraniums - Petunias - Perennials - Hanging Baskets -
Planters - Trees - Flowering Shrubs - Vines - Roses -
Premium Potting Mixes - Select Seeds



BEAVER ISLAND GARDEN

Heidi Vigil-Connor, Owner, Operator, Plant Entrepreneur
Farmer's Market starting June 18th at the Paradise Bay Coffee Shop
will be participating in Project Fresh this year
26801 Paid een Og's Rd

2009

Beaver Island Music Festival

JULY 16-17-18

Beaver Island Michigan
U.S. of A.

The Ragbirds*Ultraviolet Hippopotamus
Whitey Morgan*Rootstand*PA-U-L
The Mossy Mountain Band
Black Jake and the Carnies*Lake Effect
Squeaky Clean Cretins*Pinky Lee
Strings n Things*Sowa Brothers Band
For Heavens Sake* Shifting Souls
Dave Boutette*Ernie Douglas*Janet Day

TICKETS*CAMPING*VENDING BIME.NET
& ALL OTHER INFORMATION: 231-838-2883

PAR FOR THE COURSE – B.I. GOLF COURSE TURNS 50! 9.

by Fairway Frank

Springtime golf. Can it get any better? You're finally outside without extra layers of clothing, heavy coats, boots, hats, gloves ... and you're moving free and easy, strolling down the fairway, the air is crisp and clean, the sun is shining, the birds are singing; life is good.

And here on Beaver Island in May it's as though you are playing on your own private course. Sure, you might see Mike Bailey teeing off on number four while you're walking the first fairway, or you'll see Nel and Annette finishing up on the fifth green while you're headed for the rolling putting platform of number eight, but mostly you and your group have the course to yourselves. What a great thing. No waiting for another group to finish putting or no one behind you waiting for you to advance. Simply no waiting. Step up and swing. Or stop and look and listen as you soak up the unfolding beauty around you. What a great thing.

At this time of year the only thing waiting at the golf course is the rest of

the season ahead, there for the playing, the league play, the tournaments, the mixed events, the enjoyment (or frustration) of the next hole. The great swings, the great hits are all out there; the chips from off the green into the hole, the long putts, the towering drives, the saves from the rough, the lucky bounces off the trees – it's all out there waiting for you to experience the joys of the game.

And as the headline says, this is the 50th year for our little, pardon the expression, slice of paradise. Fifty years since Pete the Swede and young Gary McDonough began carving out bunkers behind a horse-drawn scoop, discing fairways, and hand-tossing grass seed here and there under the direction of Matt Melville and his ever-present assistant Freckles. Since then the course has seen a number of owners and many improvements. Over the four years since John Works, Jr. assumed ownership the course has seen tremendous improvement as the greens have been greatly enhanced, the trees in the rough have been trimmed, the heather has been

mowed, and an enclosed driving range has been added. Every year it seems more events are planned.

This year will see an expansion of the popular, alternate shot 'mixed partner' events to six such outings – the next is scheduled for June 21st. Once again there will be two Ladies Leagues (Tuesday evenings and Thursday mornings), plus the annual Ladies Tournament (July 18th). The annual Mens League will again meet on Wednesday evenings. The always popular Fourth of July Tournament will tee off on July 3rd this year, and the annual Jerry Sowa Outing will be held the evening of July 31st. New events proposed for this year include a four-day BIGC Open, along with a Health Center Scramble set for August. More information on these events will be available as they take shape. Another new program this year is 'Grandparents Day' which allows a member grandparent to share the golfing experience with a grandchild without green fees. Contact the course (231.448.2301) for dates and more information.

CONCERT

THE Glen McDonough Memorial Concert will be held on July 11, at 7:30 at "Red Deer," Patrick and Jenny's front yard at 37670 King's Highway.

The concert is a benefit for the Glen McDonough Memorial Music Scholarship Fund. Several scholarships have been awarded for guitar, piano, violin, and other instruments.

Glen was born here in 1934, and played many instruments with Island musicians Pat Bonner and Jewell Gillespie—and played with other Island musicians until his passing in 2004. For many years Glen was an active member of the Original Michigan Fiddlers Association, and the Jordan Valley Fiddlers Group.

THANKS

The Dolores Gallagher family thanks everyone who brought food to the Convent when we came to bury Mom. A special thanks to Sherri Timsak for singing at the Church and the cemetery. A very special thanks to Pam O'Brien for all of her help to get me through this whole thing. —Vicki Gould (Doney)



THANKS

The family of the late Phil Gregg would like to thank the Island community, family, and friends far away for their outpouring of love.

Your prayers, hugs, flowers, cards, visits, phone calls, memorial gifts, food, use of motels and cars were such a tremendous help during this sad time. You made us realize that not only did we lose a husband and father, but you lost a good friend.

We extend very special thanks to the ladies at the Beaver Island Christian Church for the lovely luncheon after the services, to Island Airways' Paul Welke for the moving missing man fly-over and Mary Delamater for helping get Ron home in time to say good-bye, Heidi Conner for the water wreath, the AmVets for their salute, and Ron Winchester for his kind help. You all helped make a difficult time much easier to bear. The love and support from all of you has, and continues to, ease our hearts. Thank you.

—The Gregg family; Lillian, Phyllis and Joe Moore, Ruthie Gregg, Ron and Ann Gregg

10. THE SATISFACTION OF COMMUNITY SERVICE



In the middle of May, 18 CMU honor students enrolled in a course on designing community service projects



various Island organizations, such as the school, the Community Center, and the Health Center.



the donated artifacts there. These students were warned: "if you don't want to do this, we'll understand." They



came to Beaver Island to experience what it's like to perform community service. They offered themselves to

Their help at the Historical Society was exemplary. They divided into four groups, two of which accepted routine tasks. One concentrated on the Heritage Park, where they raked the grounds, bagged and hauled the debris (21 large sacks); when that was done, they swept out the barn and then hauled out, repainted, and restacked the 21' 8" x 8' display boards for the Art Show.

For decades the back attic has been where things were put when no one had a better idea. Few BIHS members ventured up the narrow, winding stairs, and ducked under the low roof to look at



didn't flinch. They took everything down to the main floor (where it completely filled the "kitchen addition") to



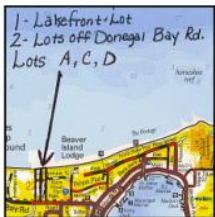
Ed Wojan Realty

Your Key to BEAVER ISLAND

Edward B. Wojan - Broker
26300 Back Highway
P.O. Box 86
Beaver Island, Michigan 49782

231-448-2711 or toll free 1-800-268-2711

view on our web site at: www.edwojanrealty.com



Masini Lane Lots

(Two Donegal Bay Rd. lots of 2.9 acres each and one Lake Michigan lot of 2.5 acres - all 200 feet wide off a new road known as Masini Lane that will run straight north from Donegal Bay Rd., half-way between the Beaver Island Lodge and the St. James Township campground.) This new road not yet constructed will be put in before Fall 2009. The lakefront Parcel A has 200.62 feet of shore frontage, is well over 500 feet from the shoreline to the south property line, with a building site on a bluff-top area that provides a fantastic view of Hog, Garden, Squaw and Whiskey Islands. At night you can see the flashing light of Lansing Shoals nine miles out and lighthouse points in the Upper Peninsula. A set of steps is needed down the bank to the shoreline in front of the house like you will find in front of the houses on the north side of Chipmunk Trail to the east. Secluded, nice tree cover, elevated lot almost in town and yet very quiet and private. Parcels C and D off Donegal Bay Rd. have the bike path along their southern line. These lots are 200 feet wide and 634 feet deep north to south. These inland, wooded lots are the best lots you'll find this close to town for a nice, wooded home-site and at a bargain price. Although solid woods right now they could be opened just like Ed and Connie Wojan's house site which shares a common line with Parcel C. See the survey copy stapled on the trees at Donegal Bay Rd. and the north side of the bike path at the Masini Lane sign.

Lakefront lot (Parcel A) \$225,000.

Inland wooded lots (Parcels C & D) \$45,000 ea.



clean the space, and then clean the artifacts and bring them back up the stairs. Once that was done, the students finished the day by cleaning the rest of the Museum.

The fourth group had the greatest challenge. They went to the Marine Museum, moved shakes, raked away dozer tracks, and relocated a boat—and then were presented with the opportunity to roll a 500#, 9'-high rusted old hand-made iron buoy up the hill and stand it upright by the road. They could use a pry bar in the steel loops at the top and bottom to turn the 3'-diameter cylinder, with two students manning large blocks to, hopefully, keep it from rolling backwards. The faculty adviser



asked, "Isn't this dangerous?"

"It certainly is," she was told. "Be very careful."



"I don't know ... this isn't what we had in mind," she stated; but the students, all for it, convinced her they



would be ready to jump out of the way in time if it started rolling backwards. So inch by inch, up the bank she came.

At the top, the gang could not lift the small end of the buoy. So two lines were grabbed. One was looped over a branch and attached to an old station wagon. But the limb's position was not directly overhead, so the second rope was attached to the CMU van at right angles. Then the task became to verticalize the buoy by keeping the ropes taut as one vehicle went forward and the other backward, and vice versa. It worked fine, and the impossible was done. The students were so pleased that they came back the next day and painted a sign for the Marine Museum on the buoy.

Get away to your getaway
In less than an hour



Introducing Flagship Private Air's
NORTHERN ESCAPE SHUTTLE

All flights operated by Flagship Private Air, LLC Part 135 certificate holder.

Pack your bags and reserve a seat aboard Flagship Private Air's **NORTHERN ESCAPE SHUTTLE**. Fly directly from Ann Arbor and other Southeast Michigan airports to popular Northern Michigan destinations, such as Beaver Island, Traverse City, Mackinaw Island, Harbor Springs, and Charlevoix. The round trip shuttle is fast, convenient and more affordable than you can imagine.

Forget about the endless construction on I-75 and 4+ hours in the car. With Flagship Private Air, you can arrive at the airport 15 minutes before takeoff and be at your cottage – or back home – in one hour. Safe, flexible and stress-free private air travel.

ESCAPE with Flagship Private Air. Visit www.flagshipprivateair.com, or call Erin Patton at 734.929.1477 to reserve your seat aboard the Northern Escape Shuttle.



FLAGSHIP
PRIVATE AIR

Because We Value Your Time

Flagship Private Air
24 Frank Lloyd Wright Drive
Ann Arbor, MI 48104



Inland Auto

Mobile and Land Based Repair

29 years experience in the business

Friendly Service

Michigan master certified in automotive light and heavy trucks

We repair heavy equipment.

We Build and Service

Electric Vehicles too!

Jeff Connor Proprietor



231-448-3132



*Your Port of Call on
America's Emerald Isle*

**Deluxe Motel Units
and Two bedroom Condominiums
with Full Kitchens.**

**Located next to the Boat
and Ferry Docks.**

**Overnight or Weekly
Swimming Pool, Cable TV**

For Reservations Contact:

Harbor View Motel

P.O. Box 104 Beaver Island, MI 49782

(231) 448-2201

harborview@tds.net



WWW.HARBORVIEWBEAVERISLAND.COM

12. ISLAND CALENDAR OF EVENTS

June, July, August: Howard Davis at the B. I. Christian Church.

June 13 - **Health and Wellness Fair:** 11:00 to 2:00 at BIRHC.

Saturday, June 13 - Camp Quality **Karaoke** 3:00 pm at the Community Center. Island teens are invited to join! Choose from over 5,000 songs.

June 13 - Northwestern Bank - **Meet our Charlevoix Team.** 4:00-7:00 pm Harbor View Motel, Refreshments.

June 13 - **New Third Coast** 8:00 p.m. at the Community Center. See page 35.

June 14 - **Sunday Dinner** at the Community Center.

June 18 - **Trees & Shrubs** of Beaver Island Nature Walk. See page 27.

June 20 - **Open House** at both Museums

June 20-21 - **Solstice Weekend at Tara's Meadow.** See page 29.

June 20 - **The Pubrunners** 8:00 p.m. at the Community Center. Page 35.

June 22 - **Wind Farm** Presentation, 7:00-9:00 p.m. at Peaine Hall. Overview of wind energy development potential, siting, zoning, legislation.

June 26 10:45a.m.-6:00 p.m and June 27 9:00 a.m.-6:00 p.m. - **Beaver Island Electric Car Show.** Saturday at 1:30 free showing of "Who Killed The Electric Car?"

June 26-28 - **Beaver Island Air Show** featuring a B-25.

June 27 - **Little Sand Bay Nature Walk** See page 27.

June 27 - **Claudia Schmidt and the Jump Boys** at the Community Center. See page 35.

June 30, July 1, July 2 - **A Rockin, Stompin Bayou Blast at Vacation Bible School** 9:30-11:30. Children ages 3-12 at B. I. Christian Church. Family Picnic following VBS on July 2. No charge, sponsored by: BICC, Holy Cross Church, and St. James Mission. Register early: Debbie 448-2048 or Jayne 448-2933.

July 2 - **Spiders of BI** See page 27.

July 2-3 - **Shae Laurel Irish** and contemporary music and dance, family-style at the Community Center.

July 4 - the **parade, the carnival,** and

BIRURAL HEALTH CENTER

In the dour economic climate the bimonthly BIRHC meeting offered hope that the decline in its finances had bottomed out as awareness of its work gains greater circulation. For one thing, 141 Early Bird raffle tickets sold.

For another, the financial statement for the first seven months of the fiscal year showed income at acceptable levels and expenses running almost \$22k below projections—despite there being 33 fewer January-to-April encounters than last year.

Another good sign was the arrival of a \$6,000 United Way grant for pro-

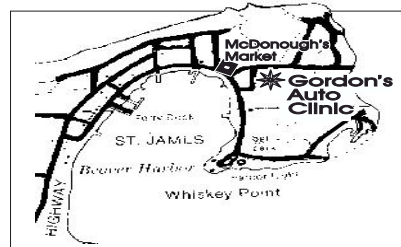
viding physicals to the uninsured.

And a link has been established from the BIRHC to the C3F, creating direct access for on-line donations to either the BIRHC Endowment Fund (which took a hit from the bad economy) or the Special Projects Fund.

The tension between BIRHC and PABI seemed to be resolved. Tempers had risen when PABI decided to raffle an off-road RTV, and a protest was made, but Judy Gallagher pointed out that no disrespect was intended, that the PABI board had volunteered to sell BIRHC raffle tickets in the past, and

GORDON's AUTO CLINIC

- Full Service Auto Repair
- Winter Storage
- Winter Snow Plowing
- Vehicle Pick-Up & Delivery Service
- 24-hour Wrecker Service



• YEAR-ROUND AUTO RENTAL

GORDON HEIKKA, OWNER (231) 448-2438

Michigan Certified Master Mechanic MI10391

P.O. Box 175, St James, MI 49782

enter your boat in the **Clyde Fogg Memorial Boat Parade**; enjoy **fire-works** over the harbor that evening.

July 7 - Robin Lee Berry afternoon Family **Ukelele Music** Workshop and evening solo performance at the Community Center.

July 9-11 - Keith Scott **Chicago Blues** extraordinaire. Community Center.

July 10 - **Beaver Tales** An original BI production of songs, poems, and anecdotes of Island life and history, performed by Island folks at the Community Center.

July 11 - **Glen McDonough Memorial Concert** 7:30. See page 9.

July 12 - Little Miss Higgins: **Gutsy, spirited country-blues** from Blissfest! at the Community Center.

July 13 - **Beaver Island Association Annual Meeting** 7:30 Peaine Hall

July 16 - **Wetlands of BI** Walk, page 27.

July 16-18 - **Beaver Island Music Festival** - www.bimf.net

July 20-25 - **Museum Week 2009**: Music on the Porch; Three-day Art

Show; see the Protar Home; learn about shipwrecks; and meet authors George Anthony/Kevin O'Donnell.

July 24 - **Switchback Irish-Americana duo** returns with their unique blend of "Celtic Soul!" at the Community Center.

July 27 - Mongolian Children's Palace Acclaimed **25-children dance troupe** at the Community Center

July 29 - Carol Johnson **Uplifting family-folk**, Community Center.

July 30-August 2 - **Baroque on Beaver!** 7-30 Small Ensemble Performances at CMU. 7-31 Orchestra at Community Center. 8-1 Orchestra and Chorus at Holy Cross. 8-2 Orchestra and Chorus at Holy Cross. See page 30.

August 1 - Beaver Island's **Inland Lakes Nature Walk**. See page 27.

August 1 - **Meet the Artists** at Livingstone Studio 12:00-5:00.

August 7-8 - **Homecoming**

September 5 - **Beaver Island Marathon**

September 18-20 - **The Celtic Games**

October 3 - **The Bite & Island Boodle**

FOCUSES ON GAINS

that there was enough of a difference between its Kubota and the Health Center's Cobalt for the two raffles to not detract from each other.

Of course there was some negative news. The alliance with NMH will not, after all, lead to a quick reduction in our insurance cost. Quite the opposite: NMH's review of our policies indicated we might be underinsured in some areas. But one aspect of NMH's ongoing search for funds for its operation involved a grant request for assisting the three islands under its umbrella, Mackinac, Drummond, and Beaver.

Another negative: the request for community members to help by joining committees did not produce results. Yet work awaits, so committee members are being asked to solicit others to help.

The Board also dealt with Kirk McBride's notice that in his opinion the OMA was violated, conceding that under the pressure of the moment (created when three executives connected with NMH agreed to attend the January meeting, forcing a last-minute early start) a mistake was made, and agreeing that more care will be exercised in the future.

MONTAAGE

Making Art a Part of Everyday Living

With Special Gifts
for June's Special People

- *Father's Day*
— June 21st
- *Many Proud and Relieved Graduates*
- *And the Many June Brides and Bridegrooms*



MONTAAGE

*Making Art A Part
of Everyday Living*

*Come and See Us
For Those Unique and
Special Gifts
For all Occasions
And an Early Summer
"Spruce-Up" for Your
Home*



MONTAAGE: 231-448-2802

Ryan Smith Construction

Licensed Contractor

**Remodels
Additions**

**New Construction Quality Craftsmanship
Roofing, Siding, Replacement Windows**

Ryan Smith

P.O. Box 331 · Beaver Island, MI 49782

phone 231-448-2601 cellular 231-620-0243

email ryanandkerry@tds.net

www.BuildOnTheBea.com





VIEW FROM THE END

A day like this must be made in heaven: perfectly blue sky, crystal clear lake water, gentle breezes of cool air. Gazing at the lake this Memorial Day, I feel blessed, even though I am sick and lying in bed. The bedroom's double doors open onto the lake and a hummingbird feeder, hanging patiently for a customer. Any will do.

Looking out over the lake, with nary a cormorant in sight, I picture millions of

baby perch swimming feverishly, no longer afraid. Our Lake Michigan will soon again be teeming with fish, thanks to the Wild Life Club and its leaders. The *Beaver Beacon* highlighted efforts to exterminate the cormorant in a story about harbor noise creation, even, if necessary, recruiting local citizens to collectively discharge weapons into the harbor air to keep the birds at bay. What an inspiring thing, to see the community

come together like this!

Hmmmm. Still no humming bird. I wonder if snakes could have eaten them? A friend visiting a few years ago suggested the sparsity of humming birds was due to snakes. They could leap into the air snatching in their jaws the humming bird in mid flight. Having seen a few yellow-striped snakes on the property, this made perfect sense, and would surely account for the lack of humming

Stoney Acre Grill

**Seafood*Steaks*Salads*Mexican*Sandwiches*Vegetarian*
*Pastas*Mediterranean*Appetizers*Pub Fare*Specials**

*Experience, Passion and Dedication
Great Service!*

Donegal Danny's Pub

*Neighborhood Tavern with Island Charm,
Fast Selection and an Emphasis on Service*

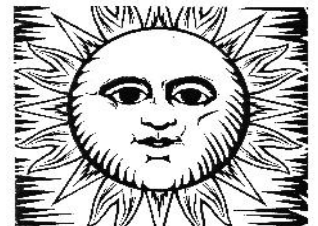
** Live Music on Weekends * Wireless * Air Conditioning * Wii * Darts*

Happy Hour Daily 4pm-6pm & 9pm-11pm

Open 11am Mon-Sat 'till Late

Open Sundays at Noon...Happy Hour All Day

448-3000



Lunch

Mon-Sat

11am-2pm

Dinner

Mon-Sat

5pm-9pm

Saturday Breakfast

7am-2pm

***Carry-Out
Available**

***Rides
Available**

**One Mile South of
The Boat Dock Off
The King's Own Hi-Way**

448-2560



15.



birds. I resolved forthwith to rid the property of snakes and to destroy their nests. I plan to notify the Wild Life Club of this plan, as it seems a logical way to restore ecological balance.

I notice, curiously, swarms of gnats, mosquitoes, and flies outside the screen door. I was hoping that with the elimination of Island beavers, standing water would also disappear and so too the bugs. No doubt there are still a few bea-

ver left alive! Perhaps a community effort here too is needed.

I rely on the *Beacon* to catch up on Island news. Memorial Day weekend gives me time to read. I was happy to note that my most favorite people got the "Persons of the Year" award. Also, the "trout" stream at the public beach near my property is to get a new culvert. (There are trout in this stream? I thought beavers had eaten all the trout?) TDS is

supposed to provide internet service to the South End? When I called a few weeks ago, the guy who answered said something like, "Internet service? I don't know nothing 'bout no stinking internet service."

Oh well, still no humming bird. Time to get out the rake and kill a few more snakes! Hope you had, as I did, I great weekend.

—Mitchel Osman, South End

Everything in its Place

2 3 1 - 4 4 8 - 2 4 9 0
Beaver Island, Michigan



Call us for weddings, floral design, fundraising events, children's and theme parties, beach parties, picnics, engagement parties, showers, farewell parties, dock parties and wine tastings.



Weddings, Floral Design, Catering, Party Planning, Professional Organization, Interior Design

2 3 1 - 4 4 8 - 2 4 9 0

www.EverythingFogg.com

16. A SALTY STUDY IN HDR

This little project started on an early, crisp, winter morning. I had gone to town in an attempt to capture a January sunrise at Whiskey Point. On the way home I stopped to shoot a series of shots at the old 'Salty' Gallagher home on King's Highway. With the morning sun rising in golden delight behind the abandoned structure, I set up my tripod across the highway, framed what seemed an interesting shot (including enough extra space for later cropping), and began shooting the frames necessary to create a final HDR image.

HDR (high dynamic range) is a photographic technique that has been around for many decades, albeit as a somewhat complicated darkroom modus. But today, due to the amazing possibilities at hand with the ever-changing and growing world of software offerings, it has become the latest rage among digital photographers. The modern HDR process involves shooting a series of frames of the same image while adjusting the exposure value of each image. Typically, this is done with a series of three to five frames, ranging from two stops over-exposed to two-stops underexposed, at either one- or two-stop intervals, although some photographers shoot many more frames at smaller intervals—as with anything in the digital photography world there are a multitude of ways to accomplish the



same thing. The series is best shot in the RAW file format to avoid any in-camera adjustment of the images as is done when shooting in the JPEG mode. The RAW series of images is then imported to a program such as Photomatrix where they are combined into a single image. Then the fun begins as this program allows multiple adjustments in multiple combinations in order to achieve a nearly-finished image. Further adjustment/manipulation in a photo program such as Photoshop is just icing on the cake as you come

closer to realizing the digital adage: it's not the photo you take, it's the photo you make.

The theory behind HDR photography is that cameras, printers, and computer screens are unable to fully capture or reproduce all the colors, hues, and tones (the dynamic range) that can be seen by the human eye. Using multiple images at differing exposures allows greater control over bright and dark contrast areas in a scene. Of course, computer operators have their own individual views and ideas of what makes a good or interesting final product, and often extend the range of tonality, contrast, and radiance to push the limits of what a final image may look like. To paraphrase a much older adage: beauty is in the eye of the photoshopper.

My interest in HDR photography has been inspired by the work of fellow BICS-grad Jason Lome (www.flickr.com/photos/lomeranger) whose abilities and results far outstrip my own—thus the inspiration—plus the never-ending search for improvement and understanding of the seemingly limitless world of digital capture and creation.

Regardless of the photographic technique involved, the most important aspect of even a small project like this is to capture the beauty and history of Beaver Island as places and events around us continuously change.

—Frank Solle

Photographs by Frank Solle





Check out new beads and jewelry at Livingstone Studio.

www.BeaaverIslandJewelry.com

Nancy Peterson bijewelry@yahoo.com
www.BeaaverIslandJewelry.com

448-2221
inlandseaskayaking.com



BEAVER ISLAND, MICHIGAN school of kayaking



half-day, full-day, & overnight sea kayak trips, sea kayak instruction
 new this year: full moon paddle & new moon stargazing nights
 inland lake eco-tours - held weekly and by special appointment

WWW.INLANDSEASKAYAKING.COM 231-448-2221



18. BIRHC RAFFLE CAR

On May 7th the highly fuel-efficient 2009 Chevy Cobalt arrived on Beaver Island. This snazzy vehicle is a beautiful gray green, comes with ON Star, and gets terrific mileage. As of the May 14th early bird ticket purchase deadline, 141 tickets had been sold. The early bird

drawing for a \$1,000 cash prize took place on May 26th, with Ginger McMillan the lucky winner. Tickets continue to be available at the Health Center office after May 15th.

Beginning the last weekend in June, BIRHC Board members and friends will

be selling tickets at McDonough's Store. This year our goal is to sell 600 tickets—and remember, ticket purchases are tax-deductible. Thanks to all who have already helped us to that goal by purchasing early. We really appreciate your support. Good luck to all!

Photograph by Frank Solle



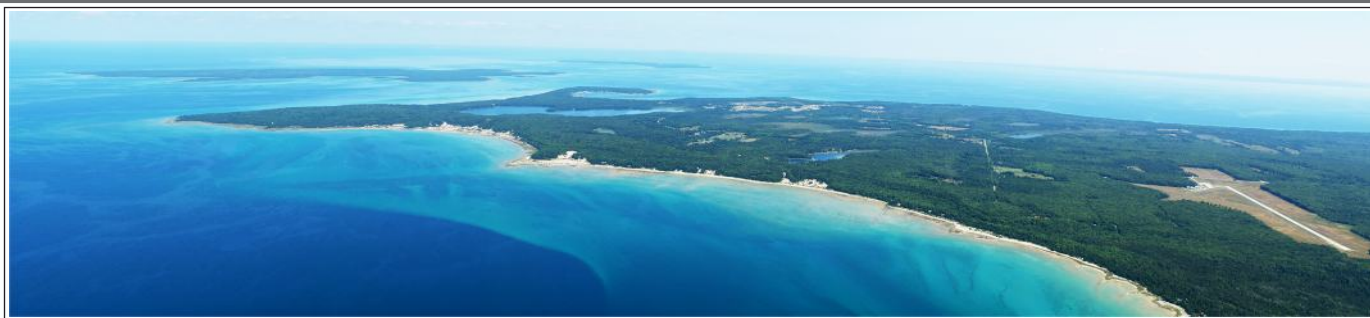
PINKY'S TREE

Pinky was gone for two weeks, and what did she miss? Only an excellent Memorial Day concert, an AmVets pancake breakfast, the arrival across the street of school groups from CMU, WMU, and the Black River School, and several boats entering her harbor despite gulls warning away all those not

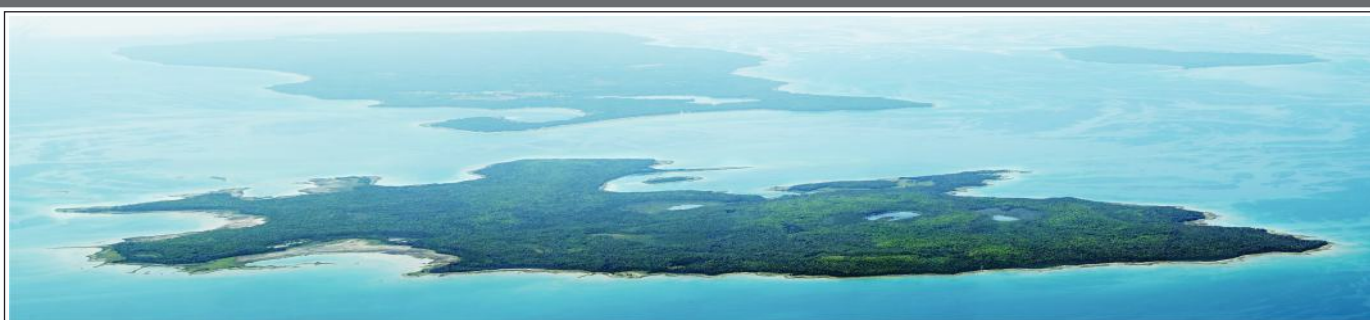
captained by Skip Duhamel.

Oh, and one more thing: the explosion of her tree, which finally paid her back for all the care she and her family have put into it since its babyhood. Those who know the real Pinky know many times she sung to this tree during the night, or reassured it during a light-

ning storm. They know how many times she shooed gulls out of its branches, gathered suckers from the Jordan River and buried them against its roots, or took a boat ride to Hog Island to gather guano. All we can say to the tree is, "Couldn't you have waited? It was only two weeks!"



ANDERSON AERIAL PHOTOGRAPHY



e-mail aap.mba@charter.net

phone 231-947-4598

AIR SHOW

19.

Who wouldn't enjoy seeing a WWII-era B-25 at the June 26th - 28th Beaver Island Air Show?

The plane coming, the "Yankee Warrior," was manufactured by North American Aviation in Kansas City, and delivered on 12-17-1943 to the USAAF. On

paper it was assigned to Lend-Lease program for the RAF as "KL148" in January, 1944. But instead it departed Hunter Field, GA, on 1-19-1944 on the southern route through Brazil to Africa. It flew seven combat missions from Corsica over Sicily and through the Brenner Pass

with the USAAF in 1944, carrying the tail code "634 9C." After the war she was used in Canada, twice put into storage, and came to America in 1968. She was restored in 1976, now at the Yankee Air Museum at Willow Run, sleeping in an original Henry Ford Hangar.



Photograph by Krista Smith

MUSIC FESTIVAL

Mark your calendars for the Beaver Island Music Festival July 16th, 17th, and 18th. The festival continues to grow, with this year's lineup including Black Jake & the Carnies, Lake Effect, the Ragbirds, the Mossy Mountain Band, P-A-U-L, Pinky Lee, Rootstand, Ultra-violet Hippopotamus, Dave Boutette,

Squeaky Clean Cretins, For Heaven's Sake, Ernie Douglas, Whitey Morgan, Strings n' Things, Jan Day/Doris Schlockman, Sowa Bros, and Shifting Souls. Also in the works is music on the ferry ride over.

For more information and tickets, visit www.bimf.net or (231) 838-2883.

ELECTRIC

June 26, cars arrive on the 10:45 ferry and will be available for demo drives. Jeff Connor will show his new Beaver Island electric pickup. Last year "over 400 people came out to see the cars, with over 200 test drives taken," Dan Wardlow said. "Six cars were sold, doubling the number on the Island."

Emerald Isle Hotel

www.emeraldislehotel.com



The Island's Newest Hotel -
One Block from the Ferry Dock,
right on the corner of Donegal Bay Road



All Rooms & Apartment Suites
have Kitchens - Full Housekeeping
Bike Rentals available on site



Free WIFI Internet access
& Conference Room

Now Hiring for Summer

for reservations, phone 231.448.2376

2 0 0 9 B e a v e r I s l a n d

*"Perfect for Beaver Island —
Perfect for the World"*



Electric

In front of the Shamrock Bar & Restaurant & the Harbour Market



Global Electric Motorcars
A Chrysler Company



Test Drives!

Financing options available.

Federal tax incentives on new cars.

Two, four, and six seat cars available



* A selection of new and gently used cars available.

SPONSORED BY FOX MOTORS OF CHARLEVOIX,
AND THE SHAMROCK BAR & RESTAURANT.

Friday June 26 + Saturday June 27

Free showing of Electric Car Movie on Saturday at 1:30
at the Community Center

FOR INFORMATION, CONTACT: DYN 448-3106
OVERTHEWOODS@GTLAKES.COM

Car Show

Be an Ambassador of Climate Change
and save \$6,000 off the 100% ELECTRIC ZENN



100% Electric AC Drive

TAKE ADVANTAGE OF THE ZENN AMBASSADOR PROGRAM and the current 10% Federal Tax Incentive to Save \$6,000 off the purchase of a ZENN car. This limited time offering is only available until June 30th, 2009 so contact your local Retailer today for complete program details and to schedule your test drive of the earth friendly, fully featured ZENN electric vehicle.

www.ZENNcars.com



* Lightly used ZENN Factory Demo cars starting at \$5,950!



NORTH CENTRAL ZENN.
AND HARBOUR MARKET.

INLAND AUTO.

22. CHRISTENING THE SCHOOL

Over 210 people gathered at the Beaver Island Community School for its official dedication, an event that featured several speakers—including past graduates from 1933 (Helen Pike), 1959 (Bev O'Donnell Cantwell), 1984 (Kathleen Green Dvoracek), and 2009 (Maeve Green).

Principal and superintendent Kitty McNamara welcomed the crowd to the gym—ironically, the only part of the old school left unchanged—remarking that the nurturing of Island youth had been done on this spot for over a hundred years.

She thanked the Grand Traverse Band for a grant for stained glass windows and playground equipment, and commended all those whose help had been needed to bring the project this far: the Visioning group; the parents, teachers and staff, and students; CMU, St. James Township, and the Beaver Island Christian Church; and the architect (Bret Kronlein of Beta Design), construction manager (Tom Sloan), and contractor Beaver Gems (Robert Gillespie and Kevin Barry and Theresa McDonough were lauded for their many extra efforts and attention to detail).

Helen Pike told a story on herself, how each day a student at the McKinley School 80 years ago would be appointed to ring the bell to announce that class was in session, and ring it until everyone was at their desk, when classes would begin. But this became an opportunity for venting petty quarrels: if someone you didn't like was still coming up the hill, it was understandable if you only gave them a few rings, followed by silence and a mark in the nun's "late" column.

Bev Cantwell, a country girl, had started at Sunnyside before joining a class of nine at McKinley. But wherever the Islanders went to school, they benefitted from a strong pro-education Island tradition. John Fiegen, ten years on the school board and 41 years a teacher, added a perspective from the front of the class: teachers do their best to impart information, but always wind up learning more than they could ever teach. To round out the comments, teacher (and former school graduate) Deb Robert read remarks from several third-graders which showed that they were very aware, and appreciative, of the gift from the community repre-

sented by the new building.

Christie Heller Perdue used her allotted three minutes at the podium to talk about the Twenty-first Century Learning Scholarship program, whose vision is to provide at least the first year of tuition for every Beaver Island graduate. This is modeled on programs begun in Kalamazoo and Northport, which are spreading across the country. To succeed, tax-deductible donations—made to the BICS 21st Century Scholarship Fund at the Charlevoix County Community Foundation—are required; they may be made for immediate redistribution in scholarships or to build an endowment, which theoretically could extinguish the need for constant new donations. Packets were passed out to all attendees as they left.

The crowd moved outside for Beaver Gems' presentation of the original McKinley School Bell and a flag-raising ceremony by the AmVets on a beautiful sunny day. Then everyone went back inside for the official ribbon cuttings, followed by tours of the facility and a picnic lunch laid out on tables behind the beautiful new school.

Gregory Larson Architect

*Offering Quality Architectural Design Services to
Beaver Islanders for over 25 Years*

1514 Mifflin Street
Huntingdon, PA 16652 Phone: (814) 643-5053
greglarson1@verizon.net Fax: (814) 643-0972



We are more than just a laundromat and carwash!

We store boats, cars, campers, household items,
construction materials...

YOU NAME IT, WE CAN STORE IT!

We have affordable month to month rates,
9 month rates, or yearly rates.

Hurry, space is limited!

Call us for more info at **448-2235** or **448-2050**

New Home Construction • Remodel • Additions • Garages • Decks

Larry Laurain Construction **Licensed and Insured**



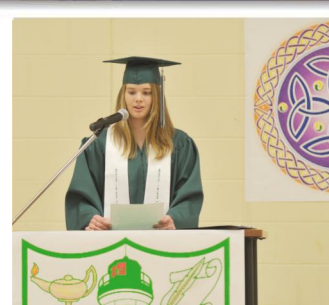
P.O. Box 463
Beaver Island, MICH 49782
PH: 231.448.2055

Kitchens-Baths • Cultured Stone • Tile & Cement Work • Vinyl & Aluminum Siding

WENDY S. WHITE, D.D.S. **BEAVER ISLAND FAMILY DENTISTRY**



P.O. Box 218
37304 King's Highway
Beaver Island, MI 49782
(231) 448-2100
Hours By Appointment



24. BICS GRADS READY TO MOVE ON

by Frank Solle

With the donning of caps and gowns and the earning of diplomas comes the responsibility of moving on to life's new adventures. And so it is with the five graduates of the Beaver Island Community School class of 2009. Ready now for whatever life brings their way, here's a brief look at the plans for each of our matriculating scholars.

Caitlin Marie Boyle, daughter of Neal and Connie Boyle, is planning on attending Michigan State University to major in Animal Science. She has long-term goals of becoming either a large animal veterinarian or a manager of a horse barn. "I'm really excited to be going off to college," she says, "but I will miss the Island." Caitlin also says she would like to thank "our wonderful community for being so supportive." One of her lasting memories is being made fun of for being a reporter back in Kindergarten.

Deven Rae Cook, daughter of Denny and Mary Cook, is planning on attending Baker College at Muskegon in order to participate in the two-year veterinary technology program with the goal of eventually obtaining employment as a veterinary technician. Looking back at her years at BICS, Deven says her favorite memories are of eating lunch with her best friend Heather.



Patrick Martin Cull, son of Bruce and Patti Cull, will attend Central Michigan University where he will study history with the long-term goal of



someday becoming a college history professor. Patrick will look back fondly on his years of participating in the sports programs at BICS as well as the

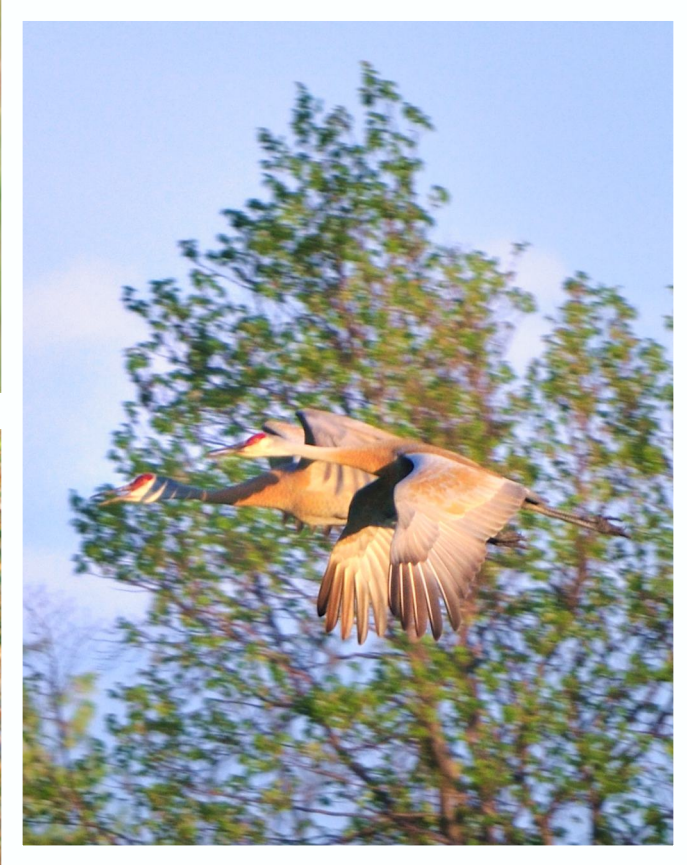


friendships he made. Patrick adds, "I know how lucky I am to have gotten my initial education in such a unique place as Beaver Island."

Maeve McNamara Green, daughter of Mike Green and Kathleen McNamara, will be attending the Great Lakes Maritime Academy in Traverse City in the fall. "I plan on earning both a captain's license and a business degree," she says. Maeve's long-term plan is to someday be a captain on an ocean-going ship, following in the footsteps of both her father and grandfather, who have captained the Island's ferries for many years. Maeve recalls that her favorite times at BICS were those spent playing sports.

Heather Nicole McDonough, daughter of Kevin and Theresa McDonough and Tamara Wisner, plans on attending Grand Rapids Community College in order to obtain her basic education, then transfer to either Central Michigan University or Grand Valley State University. While her eventual plan is to teach history at either the high school or college level, Heather adds, "I plan on traveling the world at some point in my life." One of Heather's many memories at BICS is providing entertainment, "whether it was falling in the hall or doing other funny stuff." She says, "I'd like to thank my dad and my step-mom for letting me move in and helping me get back on track with my schooling. I'd also like to thank my mom for supporting all my decisions."





TAKE A WALK ON THE WILD SIDE

27.



The CMU Biological Station, partnering with the BIHS, is again offering interesting and informative field trips. The fee is \$30; folks should sign up at the Museum in advance. Trips are limited to 28, begin at 9:00 at CMUBS, and conclude at 12:00 with a lunch in the BioStation cafeteria.

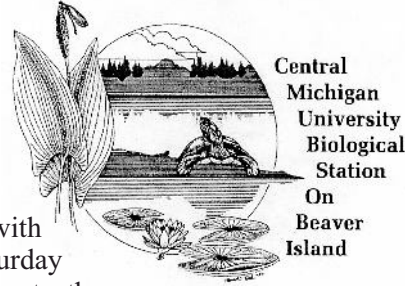
Trees and Shrubs of Beaver Island with Dr. Ed Leuck: Thursday **June 18**. A trip to a variety of habitats to see many of Beaver Island's diverse tree and shrub species. Dr. Leuck is extremely

knowledgeable about horticulture and landscaping with these and other plants, and is more than willing to answer your questions.

Little Sand Bay with Dr. Beth Leuck: Saturday **June 27**. Participants go to the Little Sand Bay Nature Preserve, hiking to Lake Michigan to explore the diverse flora and fauna, including a thriving population of the endangered Michigan Monkey Flower.

The Spiders of Beaver Island with Dr. Dave Clark: Thursday **July 2**.

Dr. Clark will WOW you with a short PowerPoint presentation on these fascinating creatures before you spend time in the field learning more about the



ecology and behavior of Beaver Island's diverse spider populations.

Wetlands of Beaver Island with Dr. Don Uzarski: Thursday **July 16**.

Participants will see various wetland types. Wetland structure, function, and values will be discussed. Walking some distances may be required; participants are encouraged to wear knee-high rubber boots.

Beaver Island's Inland Lakes with Mr. Dan Benjamin: Saturday **August 1**.

A popular trip to most of Beaver Island's inland lakes with information about their formation, current status, water chemistry and natural history.

PEAINERS DISCUSS OFF ROAD VEHICLES

On 5-31, 72 residents of Peaine Township attended a meeting (including eight who came on their ORVs) to express their views on the new Charlevoix County ORV ordinance.

Everyone had a chance to speak during the 90-minute meeting, including the deputy, who answered the environmental objections by saying that nothing in the ordinance would

allow an ORV to leave an approved road and strike out on private or state land. People conceded that there have been occasional problems with ORVs on beaches, dunes, or private land, but thought that shouldn't dictate a cutback of proper ORV use. Some people claimed legal SUVs, 4-wheel-drive trucks, and log haulers do far more damage to the environment

than the relatively slow and lightweight ORVs. Even the BIA eased off its initial objections, taking a "Let's wait and see" attitude and urging all members to watch for and report violations.

After 40 people stood up, gave their name, and voiced their opinion, the supervisor said the Board would digest what it heard before making any decision.

You're Invited!

Meet our Charlevoix team.

Saturday, June 13, 2009

4 p.m. to 7 p.m.

Harbor View Motel

Refreshments served

Northwestern Bank

1425 Bridge St. (U.S. 31), Charlevoix
547-6561 • nwbank.com

Member FDIC

*I
can do
that!*



Beaver Island's Oldest PUB
and its FINEST FOOD

Live Music as often as we can get!

Check the Beaver Island Forum for details

Free WI-Fi
Daily Specials



HARBOUR MARKET

Home Baked- Scones, Muffins, Cookies • Jim's Pizza & Sandwiches

Beer, Wine, Liquor, Soda • Candy • Cigarettes & Ice

Free Wi-fi • Smoke Free Atmosphere

Hours: Monday-Saturday 6:30am-9pm • Sunday 8am-9pm

Look for new menu items!

"Life is Better at the Beach!"

Open 7 days

Mon- Sat.

5-C

Sundays

12-C

Free Wi-Fi

28. ARCHIPELAGO CHALLENGE

The first annual (we hope) Beaver Island Archipelago Challenge Boating Event - Poker Run will be held on July 5th sponsored by PABI to benefit the Beaver Island Community Center.

Entry cost is \$100 per person. Boats will leave the harbor at 1 pm to pick up their cards; boats will be stationed at various locations around Beaver Island with hors d'oeuvres at each. After all stops, dock boats, and dinner will be

provided at the Shamrock, with the prize awarded, as well as a silent auction. The prize will be well worth the ticket price.

This will be a good fun and safe event—no speed required, just a winning hand.

All proceeds go directly to the Community Center so it's a great opportunity to have a great time on the water *and* benefit a great cause at the same time.



St. James Marine Co.



Serving Beaver Island and the Great Lakes for your hauling and freight needs. Delivery to your location available.

St. James Marine Co. hauls:

• general freight and cargo	• boats	• modular homes
• heavy equipment	• livestock	• automobiles
• stone products	• storage containers	• trailers
• cement products	• building materials	• semi-trailers
• topsoil	• garbage dumpsters	• junk cars
		• and much more!

In addition, St. James Marine Co. executes on-water fireworks shows, barge hauling-services for logging, commercial assistance towing, dust control, salvage search and diving, working boat repair, dredging, marine improvement and dock repair.



You call, WE HAUL!

Office: (231) 448-2235 Cell: (231) 838-0254

www.stjamesmarine.com

BICS STRINGS



Four of our Beaver Island Community School students played in the May 17th concert at John Hall in Bay View, Petoskey.

Katie LaFreniere and Erin Myers played in the beginner group. Michael McCafferty played in the Intermediate group, and Caitlin Boyle played in the Symphony.



These students should be very proud of their accomplishments and their dedication to playing music. We hope that in later life, no matter where they go, they come back on occasion and play for their earliest fans.

LADIES FORE PLAY

The annual Ladies' Golf Tournament will take place on Saturday, July 18, this summer. The nine-hole competition will begin with a shotgun start at 9 o'clock, and end with a luncheon, served under the tent at the golf club. All levels of players are encouraged to participate in this fun-filled day. Registration forms are available at the Beaver Island Golf Club.



"Yes, we can now reveal the answer to this question," Celtic studies professor Seamus Norgaard admitted. "We invite the bravest Beaver Islanders to Tara's Meadow to put their suspicions to rest." Scientific examinations will be conducted at noon on June 20th, during Tara's Meadow's 5th annual open house and "welcoming in the summer" cele-



bration. Other activities include live Celtic music with Linda Hammond, an "all-ages" dance around the May Pole, Irish International Spud Hurling play-offs and Irish road bowling, and a Celtic cow toss. There will be a Chili Feed, more music, and storytelling around the campfire in the evening. The festivities are free, with "pass the hat" donations towards the music and food.

"Folks will have to remove their shoes," explained Professor Norgaard. "Determining Celtic heritage is painless, but requires a foot exam by a professional. You see, during WW11 when the Germans were bombing the British Isles, storms of refugees flooded into Hereford. Some were true Celts,

others were of Anglo-Saxon descent. The Gloucestershire Podiatrist Phyllis Jackson made a crucial discovery—Celtic feet are different than Anglo Saxon feet! The trait that makes all the difference will be revealed at Tara's Meadow on Saturday June 20th."

Folks should arrive at noon. Bring 25' of colored fabric ribbon for each person dancing around the May Pole. Also bring: a lawn chair or blanket, a musical instrument, and a special stone

for our cairn — with a story about your own favorite natural spot. Bring service ware for the 5pm Chili Feed. The mission of Tara's Meadow is "to uplift" - to celebrate community and our connections with the beauty where we live.

Tara's Meadow, the site of the historic Carpenter's Mill on the West Side Road, is located a mile north of Miller's Marsh. Call Seamus Norgaard for more information: 231.448.2477, or 231.347.7957.

Choking on Dust?



Tired of this view from your window?

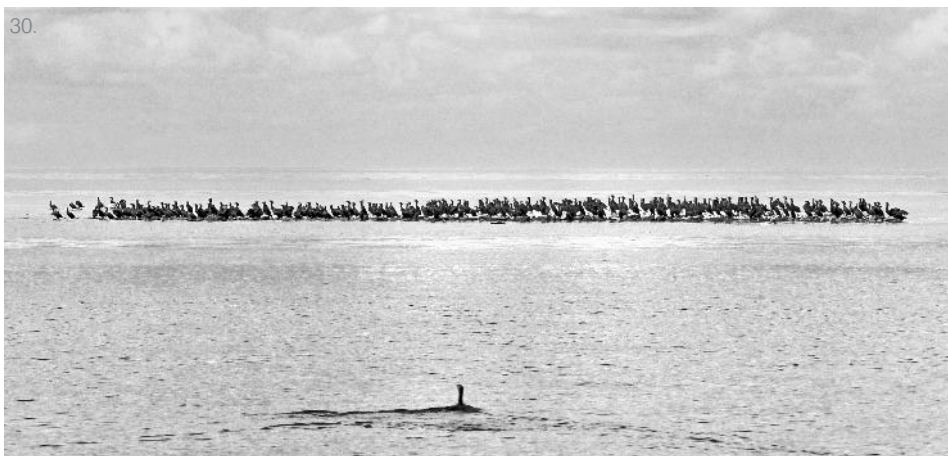
Call

St. James Marine Dust Control

231-448-2235

*Dust Control for Driveways and Roads.
Using Environmentally-Friendly Non-hazardous Products
so you can enjoy your spot on the Island without the dust!*

Working with Northern Michigan Dust Control Inc.

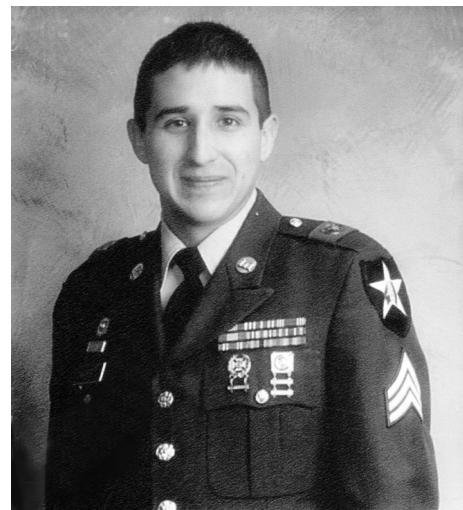


FAST & HUNGRY

The cormorant count doesn't look bad from the harbor, either because the cormorant harassment program has been successful or because there aren't many fish left; but there are still *a lot* in the archipelago.

"70% of the cormorants in North America reside in Lake Michigan... good luck being a fish."

STILL SERVING OUR COUNTRY



Staff Sgt. Michael Cherette, the son of Donzell Anthony and the grandson of Alvina Napont, has left Wasau WI for Military Intelligence School at Fort Huachuaca in Arizona, where he will receive more extensive training until the end of September. Then he'll return home for two weeks before being stationed at Fort Wainwright in Alaska for three years.

His family is very proud of him, and wish him the best in his travels.

THANKS

We would like to thank this amazing Beaver Island community. All of the love, support, compassion, gifts, prayer, and well-wishes have left our family feeling humble and truly blessed.

To all of you who share this wonderful Island treasure, which we are lucky enough to call home, we thank you from the very depths of our heart.

With blessings of love,

—the Croswhite Family, Beth, Stryder, Saygan, and Joddy and our dog Saiah would like to thank Jade and Tray

BAROQUE ON BEAVER 2009

JULY 30 – AUGUST 2

JULY 30 7:30 P.M. Gillingham Auditorium CMU

"CHAMBER MUSIC CONCERT"

featuring instrumental small group and vocal solo performances

JULY 31 7:30 P.M. Beaver Island Community Center

"BACH BOOKENDS"

featuring works by Bach, Mendelssohn, Mendelssohn and Bach!

AUGUST 1 7:30 P.M. Holy Cross Parish Hall

"SOMETHING OLD, SOMETHING NEW, SOMETHING BORROWED AND SOMETHING ORANGE!"

featuring the "Brandenburg Concerto No. 3,"

works by Earl Kim and Lee Holby, Purcell's "Ode to St. Cecilia" featuring the Baroque on Beaver Chamber Chorale with orchestra, and performances by Martha Guth and friends!

AUGUST 2 2:00 P.M. Holy Cross Parish Hall

"BLESSINGS ON OUR FAIR ISLE"

featuring the Baroque on Beaver Festival Chorus and orchestra

performing works by Respighi, Bach, Haydn; solo performances by Len Allman, trumpet, and Martha Guth; closing with John Rutter's "Gaelic Blessing"

SPONSORED BY
THE BEAVER ISLAND CULTURAL ARTS ASSOCIATION

Additional information available:
WWW.BICAA.ORG



PABI RTV RAFFLE

The Preservation Association of Beaver Island is now holding an RTV Raffle for a Kubota RTV1100. The winner will be announced on November 21st, Thanksgiving Weekend. Special thanks to the PABI Board for funding the purchase, and to Ginop Sales of Alanson Michigan for delivery. Only 800 tickets will be sold for this street-legal vehicle, and your \$50 will help the Beaver Island Community Center.

IN MEMORY



Mary Gatliff: 6-26, 1897; 5-18, 1994

*If roses grow in heaven
Lord please pick a bunch for me
Place them in my mother's arms
And tell her they're from me.*

*Tell her I love her and miss her,
And when she turns to smile
Place a kiss upon her cheek
And hold her for awhile.*

*Because remembering her is easy.
I do it every day.*

*But there's an ache within my heart
That will never go away.*

We love and miss you.

—Grace, Audrey, Kathleen, and Ann

LUCK OF THE DRAW

When Coldwater's Ginger McMillan got the call, she assumed it was yet another friend phoning to wish her a happy birthday—after all, this was a special one, her fiftieth. It was from BIRHC, telling her she had just won the “Early Bird” drawing. Of the 141 who had qualified by buying a ticket for the Labor Day car drawing (for which they all remain in contention, including Ginger), her name was pulled from the jar at the Shamrock at 7:00 on 5-25.



FRESH AIR AVIATION, INC.
Fly Right!

New Office Open In Charlevoix!

Please come enjoy all the wonderful amenities that Fresh Air Aviation's new facility has to offer. A warm, comfortable, and relaxed atmosphere with a fireplace, full kitchen, outdoor patio, plenty of on-site parking, and a Wii system!



Fly Right!

Toll Free 888-359-7448

Beaver Island 231-448-2089

06918 Old Norwood Rd.

Just a half mile south of the airport entrance.

WWW.FRESHAIRAVIATION.NET

by Frank Solle

Young kids are amazing. After attending a dress rehearsal the day prior to show time, I was amazed at, well, how awful things went. Costumes were missing, props were either missing or not put in the correct place, and lines, if remembered at all, were mostly mumbled toward the back of the stage. I began counting the hours until actual curtain time and didn't like the results.

But with a little more practice early on show day and the great burst of nerves

that comes from facing a large audience and the dimming of the footlights, the young cast came together, fed off the energy of a nearly packed house, and placed the props spot on, delivered their lines loud and clear and to the audience, and in general pulled off a performance of near Broadway-esque perfection. Like I said, young kids are amazing.

The play, *Wingin' It!*, written by Stephen Murray, follows a child's path from infancy to the day she leaves home for college. Along the way we meet all kinds



of baby-sitters, witness the terrible days of teasing in school, the dreadful gym teacher, the joys of having a substitute teacher, and the less-than-tasteful time in the school cafeteria. We move on to the challenge of driver's ed (for both the student and the teacher), the responsibilities of tackling a new job, the horrors of towing siblings along on a date, and the day to pack up and head off on your own.

BEAVER ISLAND GOLF COURSE & DRIVING RANGE



A WEE BIT OF SCOTLAND ON THE EMERALD ISLE

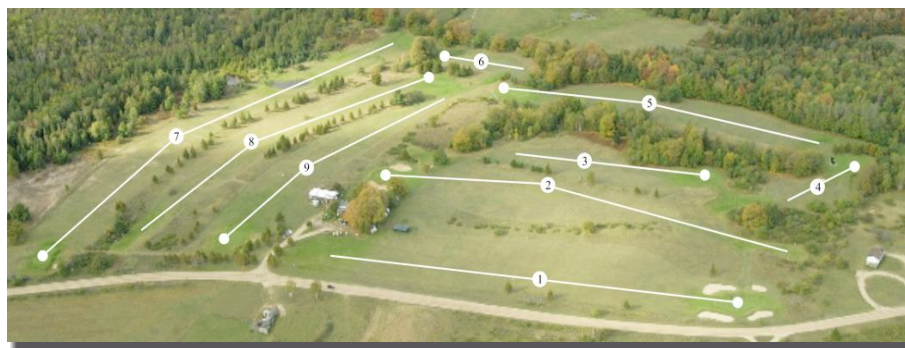
Driving Range

Summer Leagues (Men & Women)

Summer Tournaments

Beaver Island Pro Shop - Power Carts, Clubs, Balls

231.448.2301



Tour the golf course online at

www.BeaverIslandGolf.com



We also were treated along the way with tremendous efforts and stage presence by the cast. Hannah Robert knew all the tricks as the 'good' sitter, while her counterpart Emily Boyle had mastered all the ins and outs of being the 'bad' sitter. Not to be outdone was 'Sarge' Jordan Marsh who put his charges through the paces as the military sitter. Sarah Avery



magically played the clone, Carrie Coppins (that's Mary Poppins for the younger set—I was in sixth grade when she charmed us on the big screen).

And those sittees? Trace Butler, Zack Bousquet, and Ryan Boyle were all equally rotten little kids as the script



called for. Liam Hodgson, Emily Burton, and Sarah Avery were charmed by the good sitter while the sitter comparison was outlined by Meg Works.

In his role as the gym teacher, Liam Hodgson perhaps found his calling. He was born to whistle and shout orders, or so it seemed. He took no excuse or excused anyone from doing as he saw fit.

The same could be said for Emily



Boyle in her performance as the substitute teacher, although she needed a bit of work in following the lab directions. Her facial expressions were award-worthy as she ordered the class to run before the explosion.

Trace Butler wouldn't be caught dead as a real driver's education teacher, not after his experience with this crew.



Ryan Boyle proved much too nice and polite to be a robber after trying to take advantage of Emily Burton on her first day on the job—it was Ryan's first robbery attempt as well. Good thing Hannah Robert was there as Emily's mother to send him to the nearby dough-

nut shop for his next attempt.

Zack Bousquet and Liam Hodgson were a couple of cool dudes ready for a night at the movies. They had their yawn-first, arm-around-their-date moves down to perfection. Too bad Sarah Avery and Jordon Marsh were "tag-along toddlers" with big sisters Hannah Robert and Meg Works. As you would expect, the date didn't work out so well.

In the midst of all this commotion and growing up, the play was held together by the narrator, the newest mem-

ber of the fifth grade, Nick Williams, who did an outstanding job as a veteran movie preview announcer.

Directed by Deb Robert, with help from fellow teacher Kim Newport along with student Lindsey Kenwabikisie and volunteer Pam Moxham, the play was once again a great success.

Following the performance numerous donated prizes were raffled off with all the evening's proceeds going for another glorious 5-6th grade expedition to Camp Hayo-Went-Ha.



WE FLY TO MORE PLACES
THAN BEAVER ISLAND.
CALL FOR A QUOTE FROM
DETROIT, CHICAGO, GRAND RAPIDS,
LANSING, MARQUETTE, HOUGHTON,
SAULT STE. MARIE, AND MANY MORE.
SPEND MORE TIME ON BEAVER ISLAND
BY SPENDING LESS TIME DRIVING TO GET
HERE.



ISLAND AIRWAYS

1-800-524-6895

WWW.ISLANDAIRWAYS.COM

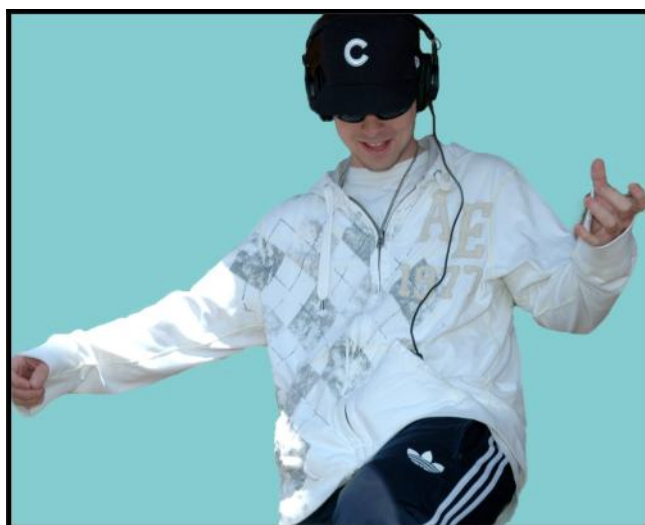
Where's the best place to . . .



Fish (for answers)



Surf (the internet)



Play (music)



Get Lost (in a book)

The Beaver Island District Library

It's all Free at the Librareee!

ONE HUNDRED YEARS AGO

35.

from Joyce Bartels

Notes from F. Protar's diary with the help of Antje Price

Charlevoix Sentinel Thursday, June 3, 1909 **Local News:** "The *Beaver* began her daily trips to the Island Tuesday."

"The steamer *Beaver* shipped a new smokestack Saturday."

"Excursion of Charlevoix Odd Fellows on steamer *Beaver* to East Jordan Friday evening, June 4th. Fare, round trip 25 cents."

Charlevoix Courier Wednesday, June 9, 1909 **Local News Briefly Told:** "W. E. Stevens of St. James was in the city Monday."

"John Quinlen of St. James is a guest of Frank Scopp and family."

"Mrs. Hugh P. Boyle, of St. James, visited Charlevoix friends last week."

"Charles O'Donnell of St James has been spending a few days in the city on business."

"George Sisco of St. James has been spending a few days in the city on business."

"Miss Eva Gibson, of St. James, and Miss Ida Gibson, of Petosky, visited at W. E. Campbells (sic) Friday."

Charlevoix Sentinel Thursday, June 10, 1909 **Local News:** "At St. James, Mrs. C. C. Gallagher has opened, across the street from the foot of McCann's dock, a very neat and fully equipped restaurant that will be pleasing to the many Charlevoix visitors to the beautiful Island. An elegant marble soda fountain has been installed and John-



son's famous ice cream goes over by about every trip of the boat."

Additional Locals: "A quarter million wall-eyed pike fry were put in Beaver Harbor Friday."

"Miss Eva Gibson of St. James, was in the city Friday on her way to Petosky and Harbor Springs to visit relatives."

"Mrs. James Donlevy and daughter

Ray, of St. James, and her sister, Mrs. Enright of Chicago, were in town yesterday on their way to the Island."

"James McCann, the St. James fisherman, has hauled out his gill nets for a time, but he, with others, are setting a string of pound nets on the Island reefs. Gill-net fishing is reported light."

Charlevoix Courier Wednesday, June 16, 1909 **Local News Briefly Told:** "James C. Gallagher, John W. Green, James and Eddie Martin, of St. James, were in the city on business Tuesday."

"Levi Shea went to Beaver Island on Monday on business expecting to return Friday."

"A letter received from St. James says they are living the simple life on the Islands and so far no deaths can be laid to the effects of local option."

Charlevoix Sentinel Thursday, June 17, 1909 **Local News:** "James C. Gallagher of Beaver Island was in the city Tuesday."

continued on page 36.

BEAVER ISLAND COMMUNITY CENTER

At the Heart of a Good Community

web: www.BeaverIslandCommunityCenter.org email: bcommunitycenter@tds.net

June 2009 Calendar of Events

Sunday, June 14: **Sunday Dinner** 11am-1pm New and special every month! Not just for Seniors! Come one and all Tickets: Suggested donation of \$3 for Seniors 60 and over; \$6 charge for persons under 60.

Saturday, June 27: Special **Electric Car Show Movie** 1:30pm; fascinating documentary about California's experiment with Highway-capable electric cars and why they were withdrawn—even against their owners' and leasers' wishes. Admission: Free

MONDAYS, June 1, 8, 15, 22, & 29: Senior **Exercise Program** 10:30am THURSDAYS, June 4, 11, 18 & 25: Senior Exercise Program 10:30am BRAND NEW on Beaver Island! Community-based recreational exercise program certified by the Arthritis Foundation 448-2022! Free.



Saturday, June 13: 8pm **New Third Coast** Wonderful 3-part harmonies and multi-instrument, diverse styles of music inspire the label "Powerfolk!" Visit www.newthirdcoast.com to listen—and enjoy! Tickets: \$12 Advance, \$15 DOS

FRIDAY MOVIES June 12, 19, & 26: Special Community Features 8pm. Check the Community Center for Titles and other info! Go to www.BeaverIslandCommunityCenter.org for summer movies!



Saturday, June 20: 8pm **The Pubrunners** A duo with a charming blend of Irish and folk music, sing-alongs, and stories! Headliners at Gaylord's Alpenfest and Macinac's Irish Weekend. Catch their tunes, at www.pubrunners.net Tickets: \$12 Advance, \$15 DOS



Saturday, June 27: 8pm. **Claudia Schmidt and the Jump Boys** She's back! One of Beaver Island's favorite performers brings her "uniquely BI show" back to the Island! Claudia's inimitable musical style fused with her jazzy Jump Boys and combined with her Island history and musings make for a truly one-of-a-kind, not-to-miss performance! Tickets: \$15 Advance, \$20 DOS

36. **One Hundred Years Ago**, from page 35.

"D. C. Nettleton returned from Beaver Island Saturday, where he was engaged in surveying most of the week." (Note: D. C. Nettleton, Charlevoix appears in the Hotel Beaver Register, June 5th)

"Deputy warden Eddy was here Tuesday on the steamer *Chase S. Osborn* and had several commercial fisherman in justice court for failing to take out a license as the law provides. Mr. Eddy complains that the fishermen are becoming very careless about complying with the requirements, and he has been instructed by Warden Pierce to do a little shaking up. The law fixes the license for sailboats at \$5; powerboats \$10; with lifter \$15. It cost a bunch of the boys \$12.75 each."

Charlevoix Courier Wednesday, June 23, 1909 **From Beaver Island:** "W. J. Gallagher went to Boyne City Tuesday."

"James Donlevy was in Charlevoix Monday."

"W. E. Stevens has arrived home from Manistee."

"Frank Dunlap, of Chicago, arrived on the Islands Monday."

"Jennie O'Donnell is home from Alpena for a short visit with relatives."

"The Beaver Island Lumber Co. are loading hardwood ties and lumber."

"Charles Edgar, of the Monitor Oil Co., is spending a few days on the Island."

"Holy communion will be given to children at Holy Cross church next Sunday."

"Robert. C. Jones, of Charlevoix, spent Sunday on the Island with his daughter, Mary."

"Robert E. Hecklin and wife, of Cincinnati, Ohio, spent their honeymoon on the Islands."

"Bishop Richter, of Grand Rapids, will be on the Islands Sunday, July 12 and confirm a class."

"C. C. Gallagher is in Chicago where his wife has been sick. Reports are she is improving."

"Joe and Mae Gallagher are with their father, W. J. Gallagher, on his present trip to the mainland."

"H. P. Parmalee, of the New Your Life Insurance Co., is at the Islands looking after the insurance affairs of the late Raymond McDonald."

"An agent of the United States government from Washington, D. C., is on the Island collecting statistics in regards to the fisheries." (Note: O. H. Gordon, D.C. appears in the Hotel Beaver register)

Charlevoix Sentinel Thursday, June 24, 1909 **Local News:** "James McCann, of St. James, came over Monday, returning Tuesday morning."

"John P. Maloney, of Chicago, came on the *Missouri* Monday evening, and will spend ten days here and on Beaver Island."

"Cap't. Morton, superintendent of the life-saving service this district, inspected the local station Monday going to St. James Tuesday to inspect that station."

IN MEMORY: ART JOHNSTON

Word has been received that after a lengthy illness Art Johnston has passed away.

His initial residence came about when his family decided to build the

Beaver Lodge in the mid-1950s. He became the construction manager, and then, with his wife Dorothy, the completed Lodge's first manager. An "idea man," he was active in the Civic Associ-

ation, and in 1955 suggested its new newsletter be called the *Beaver Beacon*. But Dorothy's poor health forced them to give up their dream and leave.

After her passing he moved back

DADDY FRANKS

Restaurant & Ice Cream Parlour



Open for Season
Hours beginning June 5th
Breakfast 7 am to 11 am
Lunch/Dinner 11 am to 9 pm
Ice Cream until 9 pm

FAST, FRIENDLY SERVICE
AFFORDABLE PRICES

Stop by and see what's new on the menu!

EAT IN OR TAKE OUT

448-2570

ROBERT'S JOHN SERVICE, INC.



Doing Quality Work for 18 Years

Licensed and Insured

- ☑ Plumbing
- ☑ Heating
 - Radiant In-floor Heat / Hydronic
 - Forced Air
- ☑ Water-right / Water Conditioning
- ☑ House Opening / Closing
- ☑ Vac-u-flo / Central Vacuum Systems
- ☑ Great Lakes Hot Tubs dealer —
sales and service. Call for a quote.

(231) 448-2805

Beaver Island News: "Frank Dunlap, Fred Pidgras, James Donlevy, W. W. Boyle and Oscar Martin were fishing at the 'Little Lake' at the south end of Beaver Island. They had good luck, Donlevy catching four (4) pickerel and Pidgras rowing the boat."

"Surprise party at Donlevy's in honor of Frank Dunlop and his friend Fred Pidgras of Chicago. There were a host of friends there. The evening was spent in dancing and singing also reciting by Miss Rachael Donlevy. Refreshments were served afterward. W. W. Boyle presented the present to Mr. Dunlop."

"Mrs. Marie Enright of Chicago, sister of Mrs. James Donlevy, is a guest at their home."

"W. E. Stevens left for Manistee on the str. *Wente* this morning."

"Four boats, loading at Beaver Island one day this week."

"Born, to Mr. & Mrs. M. J. McCann a son, Sunday morning, also a son at Mr. & Mrs. Asa Dodge Tuesday morning."

(Note: June 17 - 26 continuous storm 39 - 74 degrees - F. Protar)

Charlevoix Courier Wednesday, June 30, 1909 **Front page article**

A D R I F T O N R A F T TWO BEAVER ISLAND NINE YEAR OLD BOYS WERE LAST WEEK

A near tragedy that threw into a ferment for a while the villages and settlements on the islands in this vicinity was the adventure of Kenneth Gallagher and Bertrand McDonough, St. James boys who went to sea on an involuntary voyage on a raft.

Kenneth and Bertrand were playing down at the beach on a raft made of three cedar ties. This is a favorite sport of the boys who inhabit the islands in Lake Michigan and some of the more adventurous ones make voyages far from land with the aid of improvised sails and paddles devised from drift wood. It has long been a wonder that some of them have not been caught in a storm too far out to get to shore and

been washed off to their death. 37.

This was nearly the fate of the two nine-year-old lads who are the heroes of the latest adventure and rescue. They got too far out, a strong off wind sprang up and developed into a gale. Like the little savages of the South Sea Islands, the boys of the Beavers are natural water dogs, and they know how to hold a raft together in defiance of the waves. All day Friday and all Friday night they tossed on the billows, half the time immersed, all the time hungry. Robinson Crusoe is a tame effort of the fiction writer, from the way they tell it in a story of comparisons.

A coat, frantically waved, had given the signal of impending danger and need of help, and the plight of the youthful mariners was reported by other boys, but not until the raft had disappeared from view. Tugs started out and the *Violet* effected the rescue Saturday.

(Note: June 27 - 30 drought, big drought 64-87 degrees - F. Protar)

around 1990, living in a large North Shore garage he converted into a home. He was part of the first group of Preservation Association volunteers, and donated much time to help with the

work. He had his grievances, but never spoke ill of those with whom he disagreed. He was a great walker, and could be seen on many days chugging rapidly through St. James, a smile on

his face and a ready greeting for all.

Now Mr. Webster will have to find someone else to serve as the living embodiment of the word "spry." Lots of luck, Noah.

VAN & GEO RENTAL

PICK UP AT BOAT OR PLANE



Multi-Day Discounts
4 HR. Rates available

Call: 448-2300

BEAVER ISLAND MARINA

E-MAIL: Pat@BeaverIslandMarina.com

Beaver Island Marina



At Your Service:
Transient Slips
Fuel - Charts - Shipstore
Auto & Boat Repair
Licensed Mechanic
Storage & More

Gas Station and Car Rental
Gold Card Savings

Check out our ship store: Gifts, Bait, and More.

25860 Main - P.O. Box 76 - Beaver Island, MI 49782

(231) 448-2300 - FAX (231) 448-2763

www.beaverislandmarina.com

38. SIGNÉ ASHLEY THOMAS – VALEDICTORIAN, CLASS OF 09

Signé Thomas, formerly of Beaver Island, is Mariner High School's Valedictorian, Class of 2009. In 2005 she moved from BICS and a class of 5 to Mariner High School in Cape Coral Florida with a class of over 500. Since then she has been a whirlwind of accomplishments. Graduating with a GPA of 5.66 and 30 dual enrollment hours from Edison State College, Signé was recognized as Mariner's top student at her Senior Awards ceremony.

Her awards include: Member of Mariner High's Captain's Table, President Student Government Association, 2009 Presidential Volunteer Service Award, top 10% in Florida, 2009 Prudential Spirit of Community Certificate of Excellence, Cape Coral's 'Do The Right Thing' Award, March 2009 Overall Winner, Bruce Scheiner 2009 'Make a Difference Award,' Most Likely to Succeed, Senior Superlatives, Prom Queen 2009, National Honor Society



Member, 1st Place Thomas Edison's Inventors' Fair, Founder and President of 'Adopt a Grandparent' Program, Preliminary title holder, Miss Florida Teen USA 2009, International Model and Talent Network 1st place, Student of the Month–January 2009; Phi Theta Kappa Honor Society–12th grade.

Scholarships received include: Florida Bright Futures, Florida State University Merit, Cape Coral Kiwanis, Cape Coral Mayor's, Rotary Club of Cape Coral, Elks National Foundation, John and Mary Shanley Memorial, National Honor Society, and the New York Conservatory for Dramatic Arts Summer Scholarship.

When Signé was asked about her future plans, she said she was so excited to be in a large school with countless opportunities that she seldom got in bed before 2:00 a.m. but loved every min-

ute. "I kept myself busy with extra-curriculars too—such as school plays, track, and competitive dance. Mariner has a lot of excellent students so achieving my goal while participating in volunteer work and other activities did not come easily. Having the honor of representing Mariner High as their valedictorian is an honor I will never forget."

Her future academic goals include graduating from Florida State University Honors Program in Economics and International Relations, in preparation for Law School. She plans to participate in FSU's 'study abroad' program in England. FSU gets 2 out of the 10 spots allotted to the United States for internship opportunities with the British Parliament, and she plans on securing one of them. After law school she plans an extensive political career in the federal government. Signé is the daughter of Eula and Bill Thomas, owners of the Emerald Isle Hotel on Beaver Island, and the grand-daughter of Bill and Ruth Thomas, Traverse City, MI., and Elsie and the late John Ferguson of West Liberty, KY. Congratulations, Signé!

MacEachmharchaigh Construction



when you want to deal with someone you can trust, there's

Dan McCafferty

license # 2101179333

26275 McCafferty Lane

231-448-2238

dansarah@gtlakes.com

"A lifetime in construction has taught me the value of honesty, communication, and dedication to craftsmanship."

LARRY ROBINSON

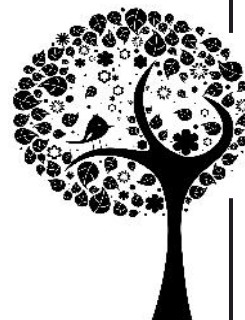
landscaping, rock and timber work

"If you can picture it in your mind, I can make it come to life on your land."

Reliable References Available

Free Estimates

(231) 881-6987



MOONEY ELECTRIC

"Where you'll never be left in the dark"



ELECTRICAL REPAIR – TROUBLESHOOTING

RESIDENTIAL AND COMMERCIAL WIRING

FREE ESTIMATES



Don and Duane Mooney, Owners P. O. Box 94
(231) 448-2456 Beaver Island MI 49782

Handy Man Carpentry Decks Painting Trees Lawn Care Sheds General Home Repairs



Please Call

Adam E. Wirth
231-448-2581 aewirth@aol.com



Lighthouse Fellowship

Sunday Worship Service at 9:30
at the Peaine Township Hall
Sunday School for the Children
(same time)

**Congratulations Beaver Island Fire Department
Job Well Done**

40. BETH WINS OPIE AWARD

This year, after only twenty years of intense, dedicated effort at the Island School, Beth Croswhite received the annual OPIE (outstanding person in education) award.

Here's what former fellow teacher Jim Stambaugh had to say about her:

"Having combined kindergarten

Beth, early on in her teaching career, found she was able to make students feel comfortable being with her, relating to everyone from the most fearful to the overly confident student.

"This ability has served her well at Beaver Island Community School for the last twenty years because not only is she the head of the counseling department there, she IS the counseling department.

"Even while busy organizing the schedule for the MEAP tests, bugging seniors about scholarship applications, and making cupcakes for kindergartners, Beth will greet each student and teacher she passes with a smile.

"More than a smile, however; you will see Beth reading the face of each individual she passes in the hallway, ready to offer words of



teaching and k-12 school counseling, Beth Croswhite has developed the ability to communicate with almost anyone and at every conceivable level. From celebrating the joy of Kwanzaa with the little ones to mourning the death of a recent graduate with high school students, Beth has demonstrated time and again an uncanny empathy for others. Discovering the flexibility of being a "random - abstract" rather than a "concrete-sequential" personality,

encouragement or concern. Beaver Island students have been lucky to have Beth Croswhite as a mentor, and I feel privileged to have worked with this delightful 'abstract-random.'"

She came here after teaching for 9 years in Wisconsin when her husband, guitar maker Joddy, was hired to build Claudia Schmidt's 3-hexagon house. At our school she taught the younger kids, and serves as counselor for all grades.

SUMMER ISLANDER MAKES TCC'S HALL OF FAME

Jim Anderson, a 1961 graduate of Traverse City High School, will be inducted to the Traverse City Central Hall of Fame.

Part owner of a cottage off the West Side Road, he has been married to Jan for 44 years, and has two children, Deborah (Dave) Prichard and Mike (Allison) Anderson.

As a student athlete, he was on the varsity football, basketball, and track teams. He attended NMU, where he played basketball and tennis, earned a bachelor's and master's degree in speech and language pathology from CMU, and worked for the Mt. Pleasant

Public Schools as a speech pathologist from 1966-67.

He was employed by the TBA-ISD as a speech pathologist from 1967-1997. He served as TCAPS elementary athletic director, TC Central boys junior varsity basketball coach, Suttons Bay boys varsity basketball coach, TC Junior High girls basketball coach, TC St. Francis varsity boys basketball coach and the TC Central girls varsity basketball coach earning five district titles with an overall record of 159-64. He was also the TC Central football radio announcer, and is currently the assistant girls varsity basketball coach at TC West High School.

HANNAH CONNOR

Hannah Conner, the former BICS student who wowed audiences with her singing (think Proud Mary) and later enjoyed a year abroad in Germany, graduated with honors from the Glenwood Springs High School in Colorado. She soloed in the school musical, and won the "Heart and Soul" award for her



work with the Varsity Choir. She began her senior year at her grandparents' home, but when philosophical differences developed she moved into her own apartment for the last three months.

She got a sweet deal from the Air Force, and will report to the Lackland Texas base in two weeks. She hopes to earn a BS during her four years of service, and intends to become a doctor of chiropractic afterwards.

He served as director of the Northwest Michigan Girls Basketball Team, the All-State Girls Basketball Camp, the Northwest Michigan Basketball Academy, and was the coordinator of "The Road to the Breslin." He has been a MHSAA boys and girls basketball official for 20 years.

Continuing his father's passion for aviation, Anderson obtained his pilot's license in 1968, is a commercial pilot and is the assistant National Cherry Festival Airshow director. He established Anderson Aerial Photography (his stunning aerials of Beaver have been displayed in many locations on the Island) in 1990.

Pointes North Inn

AT THE BRIDGE OVERLOOKING ROUND LAKE

- 1 & 2 Bedroom Suites with Lofts
- Jacuzzis & Fireplaces
- Mini & Full Kitchens
- Continental Breakfast
- Wide-Screen TV with DVD & Wireless Internet
- Indoor/Outdoor Pool
- Midweek Rates
- Long-Term Off-Season Rates
- Screened Porches and Private Balconies



101 Michigan Avenue
Charlevoix, MI 49720
Toll Free 866.547.0055
www.pointesnorthcharlevoix.com



Livingstone Studio
Local Art, Fine Craft, Unusual Gifts
www.LIVINGSTONESTUDIO.COM

Beaver **I**sland **C**onstruction

- Custom Homes
- Garages/Additions
- Remodeling/Siding
- Painting, In & Out
- Decks/Roofing
- Handyman Service

KEVIN WHITE, GENERAL CONTRACTOR

State Licensed & Insured

call (231) 448-2571

"No Job Too Small"

Ride the boat ... to Beaver Island



The best way to discover Beaver Island... by sailing past the lighthouse and into Paradise Bay aboard the *Emerald Isle* or *Beaver Islander* from Round Lake in Charlevoix. Affordable transportation to the Island for people, freight, and vehicles. And the best way to arrive on the Island!



BEAVER ISLAND BOAT COMPANY

103 BRIDGE PARK DRIVE, CHARLEVOIX, MI 49720

PHONE: 231-547-2311 . TOLL FREE: 1-888-446-4095

WWW.BEAVERISLANDBOATCOMPANY.COM . INFO@BIBCO.COM

231-448-2500 for Island Tour information & reservations



Featuring

Nina's Restaurant

Where the Cuisine is as Wonderful as the View



231-448-2396

www.beaverislandlodge.com

Ten Years Ago Almost 100 Islanders attended a joint township special meeting to consider the GLE proposal that we agree to pay 60% of the \$2,600,000 cost of a new cable—over the next 30 years, at 12%. After much discussion the measure was passed.

Katrina Martin graduated from law school with a Juris Doctor degree. She planned to stay in San Diego and take the California bar exam in the fall.

The Margaret Erber Nature Preserve at the mouth of the Jordan River was created on land donated by Tom and Sue Erber of Charlevoix.

Montaage announced its Grand Opening.

A group of CMU researchers formed the Michigan Water Research Collaboration to evaluate surface water in lakes, streams, and wetlands.

The Waste Management Fund paid Bob Morgford's costs (\$5,100) for hauling scrap metal off the Island.

A letter was printed from Henry Hill, who had been visiting Beaver Island for 81 years. He felt we tended to take its appeal for granted and were not proactive enough about protecting its delicate ambiance. He recommended

forming a Historic Districts Commission to work with the Planning Commissions to preserve what is unique.

Twenty Years Ago The Beaver Island School finished 1st among 524 schools in Michigan's MEAP scores, which included 580 out of 600 in math—ten points higher than East Grand Rapids, the #2. The students enjoyed a concert by the Prism Saxophone Quartet, and a lecture about Michigan's birds of prey by Dennis Laidler, who brought along several vicious owls.

Island leaders visited Lansing and convinced the legislators to ease back a little on the sand dune protection law, using pictures of a Ron Wojan-built home at Greenes' Bay as an example of well-sited construction providing a view without damaging the dune.

The Island school only had one graduate—Jamie Martin. Mike Moore provided music for the ceremony, but fog kept the commencement speaker from attending so the address had to be delivered by Rob McPherson, a 10th-grade student in Sparta who was visiting his good friend Jamie.

"Third Coast Beer," which had a

picture of the Beaver Archipelago on its label, began appearing on the Island.

New Island resident Pam O'Brien opened a store called "The Whistle Stop" and began selling her crafts in the new "Propeller Place" across the street from the King Strang Hotel.

The Wildlife Club mailed a solicitation to property owners and received \$1,600 from 80 new members.

After a year in Wheatland Wyoming operating their trucking company there, three generations of Butlers moved back to Beaver Island, complaining of the high winds (100 mph) that tip over dozens of trucks each year.

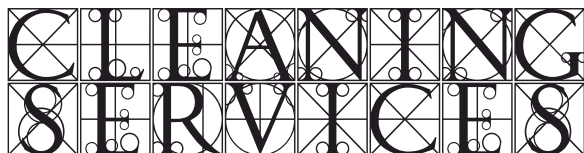
Fifty crab trees supplied last year by Barney Gleason burst into bloom around the Harbor.

The passing of Katherine Wilson was noted. She and her husband Dave were summer residents for over forty years, and helped their kids operate a laundromat.

Thirty Years Ago The *Beacon* released one issue to cover the summer. It included the story of Moe Teeter fishing with friends at Hog Island and having mechanical problems. Phil Gregg at the Marina heard about it and



Contractors



Fully Insured

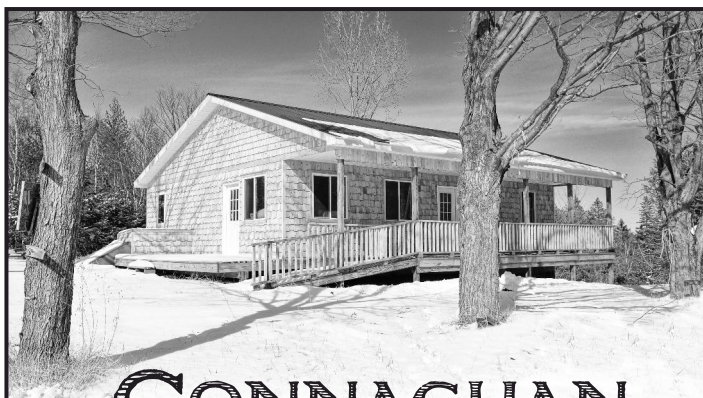
- Weekly Cleaning
- Spring Cleaning
- Cottages, Homes
- Boats
- Autos
- Windows
- Construction Site Clean-Up
- Yard Work
- Deck Power Washing and Staining

Call for appointment
231-448-2074 office

MaryJane Martin 231-675-8709 cell

Julie Martin 231-620-9228 cell

Free Estimates



CONNAGHAN CONSTRUCTION

COMPLETE BUILDING AND REMODEL
ADDITIONS, GARAGES, DECKS, PATIOS,
PORCHES

KITCHENS AND BATHS FLOORS AND MORE

FREE ESTIMATES

TONYCONNAGHAN@GMAIL.COM

231 448 2343

CELL 616 843 5381

set out to offer help, but had the wrong information—which sent him to Garden Island. Tim Timsak at the Yacht Dock got the right location and sent Terry VanArkle to Hog, who brought Moe back. But Phil encountered engine problems of his own while searching Garden's bays, and didn't get home until after midnight.

Connie Wojan, secretary of the Medical Auxiliary, reported that Vivian Visscher's luncheons raised \$520, allowing the Med Center to purchase additional equipment.

Tom McDonough was commended by new deputy Jim Peacock for his "exemplary courage and strength" for his help with Don Burke, who had fallen between his wood stove and a wall and become wedged in. Former deputy Jeff Alexander, who served a year, thanked the Island people, and promised to return often (but didn't).

The Brothers' Lodge celebrated 50 years of operation, although it was no longer being used as a Retreat. The original plan was drawn in 1918 for a building in Joliet, and amended for Beaver Island by Joe King, an assistant principal. Head carpenter Joe Burke

was given a pencil sketch and told to get to work—producing a nod. The materials were acquired in Chicago and sent from the Navy Pier in May, 1929, on board the *S. S. Puritan*. The first Mass in the chapel was held on 6-16-29.

The passing of Alex Washagesic was noted. He had been born on Garden Island in 1917, and raised on Beaver. He had been working in South Haven.

Forty Years Ago Fishing was good at Garden and Hog Islands, not just for largemouth but also for big perch. One of the pheasants planted years ago and thought to have died out was seen strutting on the beach near Cable's Bay, looking awfully cocky.

The Rustic Villa Grill was set to open, but with a new rule: no one over 21 could enter (they could buy burgers and malts at the drive-by window).

Five passings were noted: logger Neal Gallagher, born in St. James in 1891 but living in Newberry since 1923; Alfred Pratt, born here in 1897, who sailed the ore boats until 1963; Mack McClintic, who summered at Lake Geneserath; Ed Boyle, born here in 1919 who had been living and working in Manistee; and Wilfred

O'Brien, who had moved with her husband to Beaver Island and purchased Dr. Wilkerson's home and drugstore—after his death in 1915, she married Wilfred O'Brien, taught school on Garden Island, and as an active artist painted many pictures of Island life.

Fifty Years Ago Former Island pastor Father Joseph was reassigned to Louisville, where he formed a Sportsman's Club, copying the constitution and by-laws of Beaver's Civic Association, of which he was a past president.

The Island school had six seniors on the honor roll: Caroline Kenwabikise, Loretta LaFreniere, Sally Martin, Gary McDonough, Beverly O'Donnell, and Eleanor Pischner. Lower grade awards went to current Islanders Ed Wojan, Sandra LaFreniere, and Ron Wojan.

Visitors were assured that the free-range cattle grazing on the Island would be curtailed soon.

The CMU Biostation was springing to life.

A group of Holy Cross parishioners planted cedar trees around the church.

Solutions for your life

**You're a capable person. You've
solved many problems in the past.
Now you've run into one
that you can't seem to solve.**

Let us help you find some answers.

Alcohol/drug abuse • Relationship problems
Anger • Anxiety • Depression • Grief
Domestic violence • Sexual addiction

After 15 years, West Shore Counseling of Grand
Rapids/Holland is expanding services to
Beaver Island & meeting clients at BIRHC.

Call 448-3300

Confidential • Professional • Affordable

Runberg's Cottage Maintenance



Cottage Openings and Closings

Car Delivery to Airports and Ferry Dock

Powerwashing Decks • Spring Cleaning • Yard Maintenance

Winter Watch (once a month we can look at the outside,
or even go through your house to make sure everything is ok,
that no trees have fallen, etc.)

Window and Door Repair; Deck Repair; Painting

We have Comp and Liability Insurance.

References available.

Phone/Fax 231-448-2661

Cell 231-838-6084

johnsrnberg@hotmail.com



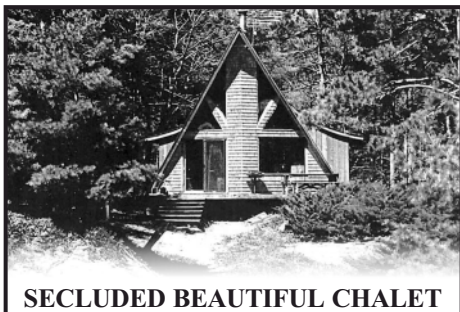
ALLEN HARBOR-LAKE FRONT: One block W. of marina. Sharp 3 bedroom, 3 bath, washer/dryer. Sleeps 8. Awesome view of harbor from living room, kitchen/dining room, and master bedroom. \$1,400/week. Call Patti Fogg (616) 399-5067 pfofgg@charter.net or www.allenfoggcottages.com



BEACHFRONT HOUSE FOR RENT: Exciting cottage with view of High Island from large deck. Open floor plan, huge windows on extremely private beach. 2 BRs with 2 full beds + loft with 2 twins. 1½ baths, TV/VCR, W/D, microwave, gas grill, all amenities. \$1200/week; spring & fall \$895. Limit 6 people. Please call (941) 921-2233 or (317) 769-6563



DONEGAL BAY COTTAGE: 3 BR, 2 BA, full kitchen, W/D, fireplace, secluded patio & deck surrounded by pines and bluff and overlooking one of Beaver Island's best beaches. \$850 per week June-September; winter rates available. Call (734) 996-3973 or suziqp16@comcast.net home.comcast.net/~loonlookout/site/



SECLUDED BEAUTIFUL CHALET FOR RENT: 10 Acres of pine with 360' of sandy Lake Michigan Beach. 2-BR (including loft), one bath, Great Room with 2 sofa sleepers. Fabulous views of the Lake. Large decks. Sleeps 7. Across from state land and hiking trails. Satellite TV. No pets. No smoking. \$800 per week. Call Ed or Connie Eicher (231) 448-2257 or (810) 629-7680



BEAUTIFUL COTTAGE on a wooded lot. This chalet-style cottage is new, bright and airy with a large front room and cathedral ceiling, lots of windows, and double sliding glass doors. Convenient access to the best beach on the island. Only \$675/week. Off-season \$425. Call (517) 927-2374 nprawat@yahoo.com



JUDE'S RENTALS: Pleasantly situated in the heart of it all! Jude's house is nestled among the peaceful nature of Beaver Island in addition to being just walking distance from the harbor, historical museums, shops, restaurants and the beach. Call Jude Martin (231) 448-2673 or (616) 340-5339

SAND BAY COTTAGE - ON THE LAKE with great beachfront. Sleeps 6. Two bedrooms and loft, 1 bath. Modern kitchen, fireplace, washer/dryer, grill.



LOEW'S LODGE ON LAKE GENESERATH: 6 BR (queens in 4 BR, bunks in 2 BR), 2 shower baths, 2 screened porches. laundry facilities, linen and bedding provided. Fully equipped kitchen. Boat available. \$1050/week. (231) 448-2809

Deck and screened-in gazebo. No pets, no smoking. \$800/week. Call Sue on (231) 448-2670 or email cabinbythelake1@gmail.com

LOG CABIN ON SAND BAY - pets allowed. 2 BR, 1 bath: \$500. Call (734) 449-0804 or email delzey@earthlink.net

WEEKLY RENTAL - Lakefront. "The Last Resort" 2 BR house on Sand Bay, great view, beautiful sunrise, laundry pair, 1 ½ bath. Phone Bill McDonough at (231) 448-2733 (days).

WEEKLY RENTAL - Harbor Beach Two-bedroom Condos. \$550/week. Call Satch Wierenga at (231) 448-2808.

Subscription: ☐ New ☐ Renewal

Name _____

Address _____

City _____ State _____ Zip _____


☐

\$30.00 / Year (Standard Rate Mail)

☐

\$45.00 / Year (First Class Mail)

Please Mail to: The Beaver Beacon . Box 254, Beaver Island, MI 49782



FONT LAKE HIDEAWAY:

Hurry, August only! 160' on the water—Spectacular view. Only 3 years old—1 mile from town. 3 bedroom/2 bath sleeps 6. washer/dryer. \$900.00 weekly. Call David at (734) 498-3555 biblanch@yahoo.com



NEAR DONEGAL BAY'S BEACH:

3BR 1 queen, 1 full, 2 twin & queen sofa sleeper. 2 Bath, Fireplace, W/DR, All Amenities, Satellite TV. / VCR/DVD, grill, bikes No pets. \$790/week. Off season April Thru June 13 & Sept 13 Thru Oct \$590. Call Gale or Warren Evenings (708) 389-0621 Day (708) 214-7049



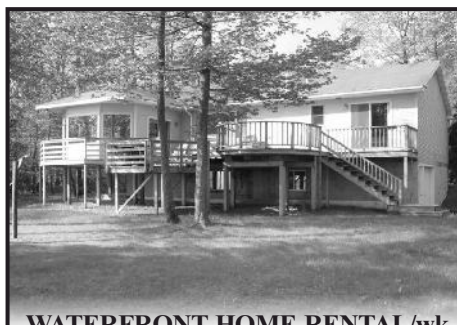
THE BIRCH HOUSE ON FONT LAKE/ DONEGAL BAY ROAD:

Close to town, beautiful sunrise, fishing, and solitude. 3 bedroom (sleeps 6) and 1 1/2 bath. Phone Mary Rose @ (630) 750-7870 or email mrdoig@hotmail.com \$975.00/wk off season rates available.



LAKEFRONT

3 bedrooms, 2 baths, 1 double and 6 single beds, washer/dryer, wrap-around porch, views of sunset & overlooking Garden & Squaw Islands. \$1200/week. (616) 405-8926 Website: www.whatproperties.com/PL48480 E-mail: Info@whatproperties.com



WATERFRONT HOME RENTAL/wk 3+bedroom, 3bath, 2,000s/f living space; at entrance of Beaver Harbor. Newly carpeted & painted, extensive decks, hand-crafted "shipwreck furniture" wet bar in sunroom/lounge w/ spectacular views of Lake Michigan & lighthouse. \$1,200./wk biproperty@gtlakes.com or (231) 448-3031



ISLAND AERIE: Overlooking harbor next to Nature Preserve, easy walk/bike to town, 3 bathrooms, 4 BR w/ 2 king and 10 twin beds, large 1st floor decks, 2nd floor wet bar and deck, 3rd floor game room, all modern amenities and appliances, great for multiple families and groups. \$1800/week, reduced off-season and extended-stay rates. Call John and Jan (989) 866-2159 www.islandaerie.net . Jan@islandaerie.net

DONEGAL BAY - Clean and Comfortable 3 Bedroom Home. Private Beach, Unforgettable Sunsets. Call Valerie Connors at (810) 487-1028.

7 PINES - Weekly Rental Close to town (short walk to Dalwhinnie) Sleeps 6, 1 1/2 bath, washer/dryer, linens furnished, freshly remodeled,

DOG FRIENDLY, \$750/week, Contact Ryan & Gretchen Fogg at (616) 836-1597.

HOUSE ON WICKLOW BEACH FOR RENT - sleeps 6. \$875/week weekly rental. Contact Ryan or Kerry Smith ryanandkerry@tds.net or (231) 448-2601. *continued on page 46.*

DONEGAL BAY - 3 BR 2 bath Home; sleeps 6; many amenities. \$1,000 a week. Reduced rates for off-season. Phone (313) 885-7393, after 4:00 p.m.

Give a Gift Subscription:

Name _____

Address _____

City _____ State _____ Zip _____

☐

\$30.00 / Year (Standard Rate Mail)

If you would like a gift card sent:

☐

\$45.00 / Year (First Class Mail)

A Gift From _____

Message _____

Please Mail to: The Beaver Beacon . Box 254, Beaver Island, MI 49782

The **Convent**
in the Village
Beautiful Harbor View
Full Housekeeping Home
Sleeps 15 - 7 Bedrooms w/ sinks
Fully-equipped Kitchen
Beach Access
Great for Multi-Family Groups,
Family Reunions, Business Retreats
Open Year Round
Call 448-2206
(Pam O'Brien)

**VALHALLA:**

Spacious cottage for weekly rental. Two bdrms with 6 bed bunk rm. 1 & ½ bath. Washer/dryer. Great kitchen w/all amenities. Sauna w/shower. Lk. Mich short walk to beach on owners property. Pets OK. \$850.

View pics. under cabin rental at www.BeaverIslandJewelry.com (231) 933-3972

**HARBOR LIGHTS:**

A unique log home looking out over Paradise Bay. Beautiful views of St. James harbor, Garden and Hog Islands. Enjoy the boat traffic from the huge deck, or sit around the fire pit on the beach. Home is very secluded, sitting among lush cedars and pines. 3 bedrooms with 2 queens and 2 double beds. One large bathroom and one half bath. All the amenities you could ever need. Immaculate home with "spectacular" views. Our rate is \$1,200.00 a week. This year we are offering a "Harbor lights stimulus package" offering a 10% discount for a week's stay.

harborlightsbim@aol.com

Home (630) 834-4181

Cell (630) 995-0507 We know you'll come back to Harbor Lights!

**SPARKLING HARBOR VIEW:**

Welcoming cottage perched on a bluff overlooking the harbor. Less than a mile south of the ferry. This up-to-date cottage is comfortably furnished and contains 1 full bed, 2 twin beds, plus a day-bed. Short walks to beautiful beaches and the activities and amenities of town. Two bikes, tv/vcr, microwave and Weber grill. Sorry, no pets.

\$675 a week.

Call Mike at (734) 769-7565

or (734) 475-6178 or email at mschroer@a2mich.com

**FOR SALE: 28190 ISLAND**

WOODS RD: 3 Bedrooms; 2 Baths; Built in 2005; Immaculate with loads of character; For details and interior photos, go to Forsalebyowner.com (Listing ID #: 21207130) or contact Drew & Sarah at (231) 675-3746

THE FISHERMAN'S HOUSE - Great 'In-Town' location across the street from St. James Harbor on the harbor road. 4 BR/2 Bath; W/D; Four bedrooms, three rooms with double beds and one room with twin beds, two bathrooms, bed linens and bath towels provided, fully equipped modern kitchen, washer/dryer, TV, enclosed porch, and open deck with grill. For availability, call Bill or Tammy (231) 448-2499 or (231) 448-2733.

HAGGARD'S SUMMER RENTAL HOMES - Beautiful home overlooks Paradise Bay across from the Maritime Museum. A comfortable custom home sleeps 8-10 with 3 baths. Sunset view of the harbor and the village of St James is a winner. Public sand beach is close by.

Well mannered pets welcome. Only \$1,200 per week. Also, a 2-BR 1 bath mobile home a block from the store and a short walk to public lake access. Well mannered pets welcome. Price is right at \$400 per week. Both properties: samhunt59@yahoo.com; day (231) 547-4046, evening (231) 547-6600.

WATERFRONT COTTAGE - On the east side. Available by the week or weekend. One BR, full kitchen and bath. Enjoy the water and the woods, year round. Off-season rates. Complete privacy. (231) 448-2907.

RENTAL CABIN - for rent - Sand Bay-sleeps 8—amenities—available May- September \$950.00 wk plus security deposit. (231) 582-5057 or email robin@robinleeberry.com.

NEW HOME ON SECLUDED ONE ACRE WOODED LOT IN PORT ST. JAMES

400 ft from north shore. Listen to the lake, see Garden Island when the leaves fall. Open floor plan 1875 ft² on one floor. Full unfinished raised basement with 2 egress windows. Two large master suites, one with large deep jet tub. Half bath in foyer. Smaller third bedroom is used for office. Lots of huge closets. Ceiling fans in every room. Decks on three sides. Two-car attached garage. Outdoor wood boiler with auxiliary propane for hot water baseboard heat. Radiant electric heat tile in bathrooms and laundry room. \$250,000.

For more info call (231) 448-3010, or e-mail kopperud@tds.net

HUNTER 22' SAILBOAT - 1984 in great shape with Magic Tilt tandem axle trailer. Swing keel. Fully equipped: roller furler, radio, depth finder, shore power, stove, electric sink, 8hp Yamaha outboard. \$4200 or best offer. (231) 448-3888 on Beaver Island. 38905 Island Woods Rd. North

REAL ESTATE, FOR SALE

PROTECTED HARBOR SITE - 60' Lake frontage by 250' deep. North of the Toy Museum. Call (231) 448-2391.

FOR SALE - 1300 SQ. FT. HOME with 12'x12' out-building on Font Lake Court \$99,900.00 Call Mike Collins Island Properties (231) 448-2923.

LAKE GENESERATH - Lot For Sale Parcel # 15-012-015-013-10, Hemlock Point Road; 140' lake frontage on the North Arm of beautiful Lake Geneserath; lot approved for building on w/o restrictions. (616) 772-9783; (616) 283-7227; cschrotenboer@ghyfc.org

LAKE GENESERATH - Beautiful lot on Hemlock Point Rd. 111' lake frontage with lovely view across bay into state forest. Entire lot level with large hemlocks & no wetland or restrictions. \$78,000. (616) 399-5164 or mfolkenning@pol.net

LOTS FOR SALE - Lots 727, 728, 729 in Port St. James #8 on Tamarock Trl. \$12500 ea. Wish to sell all 3 at one time. \$7500 down will finance \$30000 bal at \$350 per mo. for a few years. Will sell for cash for \$34,500. Call Ben at (386) 439-3351.

40 ACRES ON SLOPTOWN ROAD - Call Bud at (231) 448-2397.

**SHORTY'S PLACE:**

Close to town with a beautiful view of the harbor and water access, 3 bedroom, 2 bath, sleeps 6. Dalwhinnie and McDonough's within walking distance. \$1100 per week.

Call Patti Fogg: (616) 399-5067.

Website: www.allenfoggcottages.com

Email: pfogg@charter.net

SECLUDED 1940s LOG CABIN JUST ONE BLOCK FROM LAKE and market on one acre - Sleeps 4-6, *pets welcome* (\$100 deposit.) Washer, Dryer & linens furnished. Bicycles, canoe, grill available \$700/wk; weekends available. (219) 863-2655 or email cehlah@urhere.net

LOCH WOOD SHORES - Located on the beach of Sand Bay. 3 bedroom, 1 1/2 bath, W/D, full kitchen, gas grill, large deck that you step off onto the beach, fireplace, dish, and a gorgeous view. tammymcd107@yahoo.com or call (231) 448-2733 or (231) 448-2499.

APARTMENT FOR RENT - \$550/month, Fully Furnished, Near Four-Corners, Year Round availability Call (231) 448-2074 or (231) 922-0000.

FOR SALE: YAMAHA snowmobiles with covers. Located on island. \$1000.00 for both. Call 448-2708

**BEACHFRONT HOME FOR RENT:**

3 bedrooms and loft - total 5 beds, hot tub, gorgeous views, solitude, wood stove, May-Sept. \$1050. Off-season \$795. \$50 gas card with week's rental. Call Perry at (313) 530-9776 or e-mail pgatliff@hotmail.com

FOR SALE at \$339,900

DONEGAL BAY COTTAGE - Nicely furnished 3 BR, 1 bath, washer/dryer. On dune w/ beach access. \$775/ July & August \$600 off-season weekly. Dana Luscombe (248) 549-2701 eve or dana.luscombe@gmail.com

SAND BAY - "BAY HAVEN" COTTAGE - WEEKLY RENTAL - Lake Front, Sandy Beach, 5 br, great view, laundry, East Side Dr.—only four miles from town. This home is only two years old. Awesome sunrises—walk to beach is straight and flat out the lower level. Please call Laurie Bos at (616) 786-3863 or email lauriesbos@chartermi.net Home is full for summer of 2009-taking reservations for Fall 2009 and summer 2010. Web: bayhaven.beaverisland.net

RENT YOUR COTTAGE with a *Beacon Ad* - pays for itself many times over ads@beaverbeacon.com

FOR SALE, 11 ACRES ON EAST SIDE DRIVE - good land, 357' on road, 1373' deep; \$28,900. Phone (231) 448-2545.

PRIME 20 ACRES NEAR FONT LAKE - close to town, w. apple trees, power and road in. \$150,000 Erik Peterson (616) 240-8980.


2 LOTS ON SAND BAY - 3.3 Acres each. 1700' deep. Sandy Beach. Frontage 117' each. (810) 629-7680 or (231) 448-2257.

10 ACRES OLD FOX LAKE ROAD Beautiful, wooded, great building site; \$39,000 **MUST SELL.** (231) 409-1214.

TWO LOTS IN THE PORT ST. JAMES - near Font Lake. Perked, wooded, buildable. #708 & 709; electric and phone right there. \$14,000 each. Call Peggy at (269) 671-5557.

THE WALSH 40 - south of the Beaver Island Golf Course - Walk to the Fairway. Make offer. (248) 649-4909 or (248) 515-8746.

KING'S HIGHWAY LOTS ON THE EDGE OF TOWN - Two beautiful wooded lots right near town, the Brothers' Place, and the harbor. Asking \$40,000 each. Please call (773) 646-1424 or email Odatlo@sbcglobal.net



Ed Wojan Realty
Your Key to BEAVER ISLAND

Edward B. Wojan - Broker
26300 Back Highway
P.O. Box 86
Beaver Island, Michigan 49782
1-800-268-2711
www.edwojanrealty.com

Units 7, 8, 9, 11 of Innisfree Dunes Condominium

Four beautiful, wooded acreage pieces located on the north side of Donegal Bay Road just four-tenth's of a mile from town and the Emerald Isle Hotel. These lots have access to their interior (north side) off Innisfree Lane but Lots 9 and 11 also have access to Donegal Bay Road. The new bike path runs along the south line of these lots. All four lots are zoned and restricted to single-family residential use. They are very close to town and just about 3/4 of a mile from the public access at Font Lake. Lot 11 is immediately adjacent to Ed and Connie Wojan's home at 26765 Donegal Bay Road. Lot 7 is on the west side of Innisfree Lane and Lot 8 is just toward town on the east side of Innisfree Lane. These large homesites are really hard to find close to town; the nearest anyone will find something like these are 10-acre parcels much farther down the Island. One-half acre lots in the Wojan Plat a little closer to town than Innisfree Dunes Condominium have been selling for \$42,000 to \$45,000 for a number of years. These 2-1/2 to 3 acre lots are therefore really a bargain at **\$45,000 each**

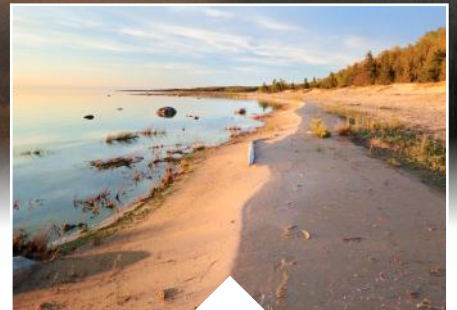
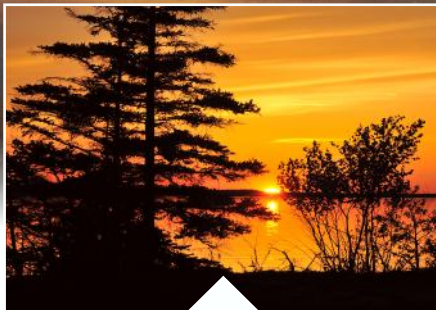


FOR SALE - HARBOR-AREA HOUSE:

Four bedroom, 1 1/2 bath house on two lots with garage. Wonderful location near town and the harbor. Asking price is \$195,000.

Ed Wojan Realty:
Real Estate Office: (231) 448-2711
Toll Free Number: 1-800-268-2711

view our web site: www.edwojanrealty.com



B E A V E R I S L A N D J U N E 2 0 0 9



P.O. Box 254
Beaver Island, MI 49782

www.beaverbeacon.com

ADDRESS SERVICE REQUESTED

STANDARD RATE
US POSTAGE PAID
BEAVER ISLAND, MI
49782
PERMIT NO. 3