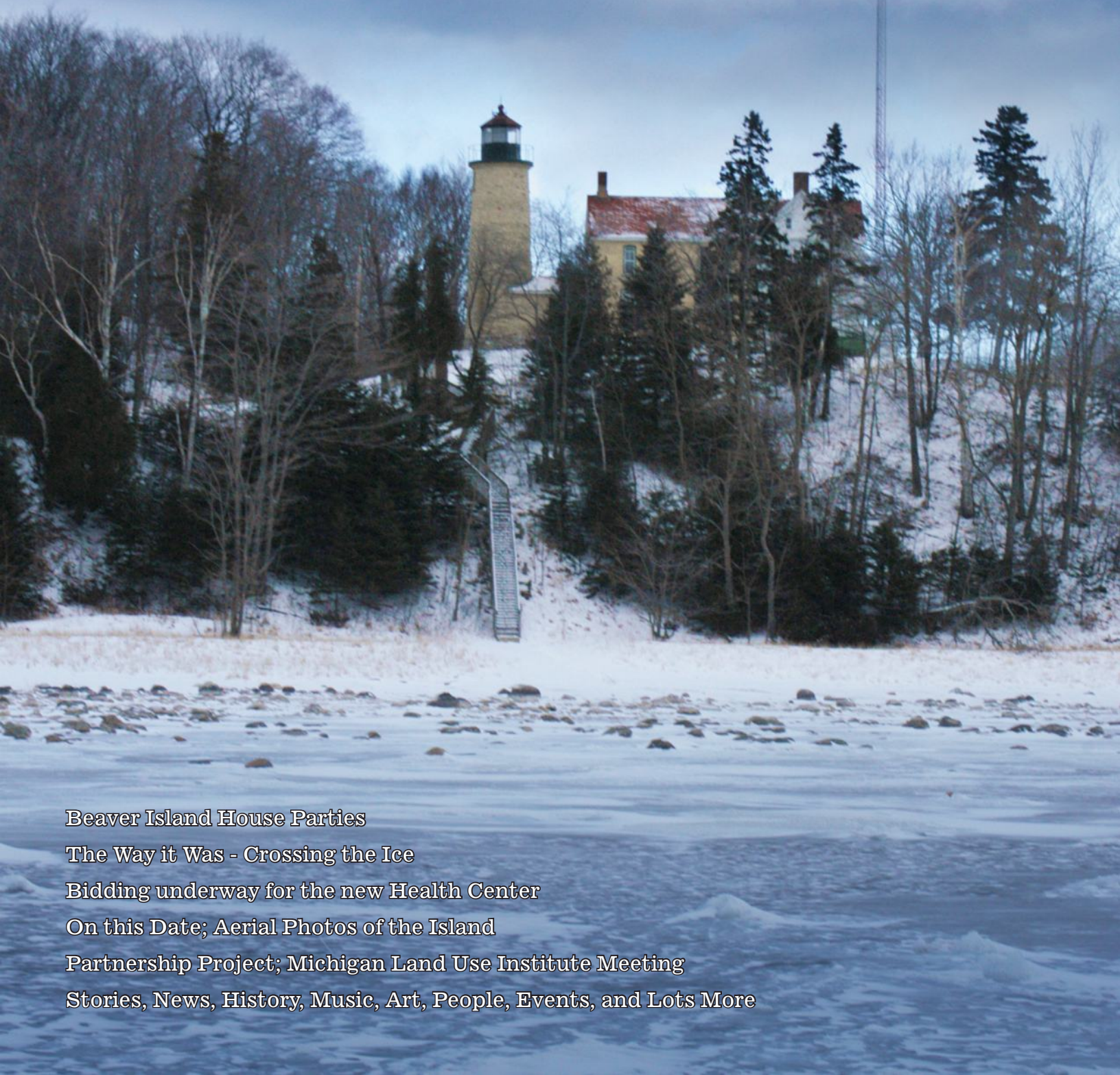


February 2003 \$2.50

Beaver Beacon

The Island Monthly Since 1955



Beaver Island House Parties

The Way it Was - Crossing the Ice

Bidding underway for the new Health Center

On this Date; Aerial Photos of the Island

Partnership Project; Michigan Land Use Institute Meeting

Stories, News, History, Music, Art, People, Events, and Lots More



Dalwhinnie

The meeting place

Fresh bakery items daily, espresso, cappuccino, deli salads, sandwiches, pizza, ice cream, soft drinks, and much more! Eat in or take out. (231) 448-2736.



McDonough's Market

Since 1933

On America's Beautiful "Emerald Isle"

38240 Michigan Avenue

Beaver Island, MI 49782

(231) 448-2733

Full line of groceries. Custom-cut meat. Fresh produce, Beer, Wine, Liquor, Block & cube ice. Movie rentals. Post cards. Beaver Island clothing, Hardware, Toys, Public Telephone. Small & major appliances, Greeting cards, Notary service. Michigan lottery. Fax, Money orders & transfers, Island maps.
www.mcdonoughsmarket.com



ISLAND AIRWAYS

Fly to Beaver Island

*Providing more than 57 years of continuous service
1945-2002*

We Want Your Freight!!!

Island Airways wants to be your year round freight provider. We offer reasonable rates and in most cases same day service. We are happy to haul big or small. Give us a call today and see how we can be of service.

Remember your time and business are valuable to us!

Toll Free (800) 524-6895 • Charlevoix (231) 547-2141 • Beaver Island (231) 448-2071

www.islandairways.com

Contents

3.



BIRHC Thanks Gary Damstra for his years of service	4.
Bidding set to begin for new Health Center	5.
A Thank You from the Heart	5.
House Parties on the Road Again	6.
Charlevoix County Commissioners Meeting	8.
The Charlevoix Airport	8.
Michigan Land Use Institute Beaver Island Meeting	9.
A New Market	9.
News from the Townships	10.
The Way it Was - Crossing the Ice to build the Roosevelt School	12.
News from the Wildlife Club	14.
Beaver Island Aerial Photo	15.
Can You Spot What's Changed in 4 Years?	16.
The Partnership Project Moves Along	18.
Getting Back to Work - the Art of Mary Scholl	20.
A Thank You from the Family of Bill Welke	23.
A Thank You from the Family of Ruth Arden	23.
On This Date	24.
Edith Burhans 1913 - 2002	26.
Chamber of Commerce Beaver Island Citizen of the Year	26.
TDS Helps Provide Phones for Low Income Families	26.
One Hundred Years Ago	27.
Weather or Not	28.
Letters... We Get Letters	29.
Classifieds	30.

Beaver Beacon

the Island Monthly since 1955

Published by
Paradise Bay Press

Beaver Beacon
P.O. Box 254
Beaver Island, MI 49782
phone: (231) 448-2476
email: beacon@beaverbeacon.com
web: www.beaverbeacon.com

Editors / Owners

Jeff Cashman
jcashman@beaverisland.net

William Cashman
wcashman@beaverisland.net

Contributing Writers

Joyce Bartels
Liam Racine
Lois Williams
Connie Wojan

Cover and Above: Photos from the
Beaver Island Head Lighthouse taken
January 26th, 2003.

Subscription: New or Renewal

Name _____

Address _____

City _____ State _____ Zip _____

E-mail Address (optional) _____

- ☐ \$26.00 for One Year
☐ \$48.00 for Two Years
☐ \$68.00 for Three Years

Gift Subscription

Name _____

Address _____

City _____ State _____ Zip _____

Gift From _____

Message (for the gift card we will send):

Please Mail to: Beaver Beacon, Box 254, Beaver Island, MI 49782

BANK[≡]ONE[®]

Cathleen A Jones

Loan Officer


Beaver Island Property Owner

BankOne in Grand Rapids
phone (616) 771-7157

on-line access to your
investment accounts

roll-over mortgages at today's
best rates

refinance, or construction
loans plus end mortgages

Equal Housing Lender 

Mike's Island Karaoke

**and DJ Services
for All Occasions
Contact Mike at
448-2886
for bookings.**



Thank you To Gary Damstra for Years of Service

On January 21st, Beaver Island Rural Health Center Board president Gary Damstra resigned after twelve years of membership. The Board and Staff would like to publicly thank Gary for his service and leadership. Gary first joined the BIRHC Board as St. James Township representative in 1990 and continued as an at-large member after his resignation from that Board. He agreed to take on the presidency two years ago at a very critical time.

Board and Staff members alike cannot express enough appreciation to Gary for his steady leadership over the challenging past two years. Until just a few months ago when transition manager Arlene Brennan was hired, Gary functioned as the Beaver Island Rural Health Center's unpaid manager, personally supervising the Staff and many aspects of the operation of the Center. Before going to his own construction sites each day, he would stop at the Medical Center to listen to Staff concerns and help problem-solve. As president he also spent many hours as chief communicator; chairing and planning public meetings; attending sessions with our legislators both on and off the Island; and personally responding to feedback (positive and negative) from the community. Gary has also put in many hours over the past year interviewing architects and

planning for the new facility.

The Beaver Island Rural Health Center Board and Staff recognize the stress Gary must have experienced trying to juggle the demands of running his own business and the business of the Center. Thank you, Gary, for all the personal sacrifices you made in order to reunify the BIRHC Board and to provide an essential sense of stability to the Staff. Thanks also for your way of making everyone connected with the center feel that their contributions were valuable and appreciated. We want you to know how much we value and appreciate your tremendous contribution over so many years!

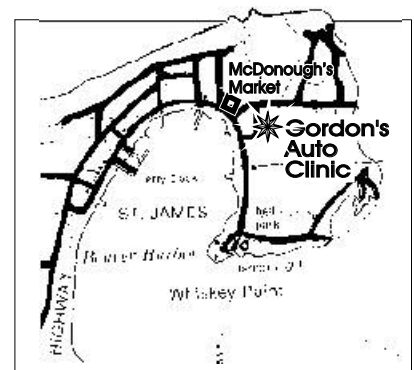
—The Beaver Island Rural Health
Center Board and Staff

Coming Soon: 17th Annual Talent Show

It's time to start thinking of how to overcome your stage fright, in most cases, although in a very few it's time to start thinking about toning it down a little—because the 17th annual Talent Show will be held on April 11th at the Parish Hall. Anyone wishing to use the Karaoke machine must contact Mike or Sharon Hurkmans (448-2886) to make arrangements. To sign up, call Sheri (448-2510) before March 21st. *Get your act together!*

GORDON'S AUTO CLINIC

- Full Service Auto Repair
- Winter Storage
- Winter Snow Plowing
- Vehicle Pick-Up & Delivery Service
- 24-hour Wrecker Service
- Year-round Auto Rental



(231) 448-2438

GORDON HEIKKA, OWNER
Michigan Certified Master Mechanic MI10391
P.O. Box 175, St James, MI 49782



Bidding set to Begin

Architects from Hobbs-Black Associates of Ann Arbor expect to send the final bid package for the new Beaver Island Rural Health Center to invited General Contractors between January 24 and 31. Two and possibly three Island contractors, as well as four off-Island firms, are expected to respond to the bid request within the three-week window of opportunity, according to Kevin Kerschbaum, lead architect on the project.

The General Contractors will be encouraged to solicit subcontractors from those based on the Island. Island subs interested in seeing the bid package are invited to contact Kerschbaum at (734) 663-4189. A full list of all the contractors and subcontractors who have expressed interest in the project will accompany the plans sent to the General Contractors to insure a fully-open bidding process.

Construction of the 7,000 ft² building is expected to begin in April of 2003, with the first patient treated in early 2004. The new Health Center will replace the current facility, which was built in 1953.

School Position Available

Thanks to a grant from the Grand Traverse Band of Ottawa and Chippewa Indians, a part-time position of Planning Implementation Coordinator has been created and needs to be filled at the Beaver Island Community School. Applicants should have a strong background in education, a BA or more, and have strong technological, organizational, research, and interpersonal skills. The Coordinator's duties will include building capacity within the existing school system to implement adult support teams for all students. The project will run for about 300 hours, with salary negotiable. Deadline for applications is February 14th.

A Thank-You from the Heart

I would like to thank everyone for their cards, flowers, baskets of fruit, and phone calls during my recent medical problem. The many prayers that were said during my stay in the hospital for major surgery (valve replacement and double by-pass) really were appreciated. Also thanks to Rev. Grooters of Charlevoix's Reformed Church, Rev. Davis of the Beaver Island Christian Church, and Lois Rich's Bible study group for their many prayers.

—Dorothy Willis



Beaver Island Property Owners Association

Join Now! Keep in touch with Beaver Island events likely to affect you and your property.

Receive our regular BIPOA newsletter.

Visit our web site:
www.beaverisland.net/bipoa

Contact: Annette Dashiell, Treasurer
(231) 448-2542

**Help Support
the Beaver Beacon by
advertising and show
your ad to more than
1000 people monthly.**

**See page 30 for Advertising Rates
www.beaverbeacon.com**



Laurain LODGE

- ♦ Fine accommodations known for hospitality, quality, comfort and convenience for business or pleasure.
- ♦ Fully furnished housekeeping units with TV, VCR, cable 1 or 2-Bedrooms; king, queen, twin beds available
- ♦ Grand deck, grills, separate children's play area, campfire.
- ♦ 12-Fl. aluminum rowboats on four inland lakes for fishing, sightseeing (included with each room)
- ♦ Fresh, spacious rooms, pleasant gardens, wooded views.

Relax. Let the hospitality at Laurain Lodge help you enjoy Beaver Island. It's why so many return year after year.

Visit our web site to see pictures: www.laurainlodge.com

Call today for reservations or information on island activities

Phone (231) 448-2099

38085 Beaver Lodge Drive, Beaver Island, MI 49782
Your Hosts, Larry & Theresa Laurain

Beautiful setting

Within a short
walk to:

Shopping
Dining
Public beach
Playground
Hiking
Museums
Tennis courts
Library

Daily morning
coffee & donuts

Perfume Sets, Candle
Fountains, Grooming,
Skin Care, Gift
Baskets and many
other great gift and
everyday Avon items.

Jane Dwyer
Independent
Avon Rep.

448-2868



House Parties on the road again

On January 12th a somewhat neglected Island tradition, the House Party, saw new life, thanks to hard work by Cindy Ricksgers and the Youth Consortium and the success of their application for a grant. The grant will fund several programs: in-school art and enrichment programs for students, evening enrichment classes primarily for adults (our "winter Wednesdays," 3 nights per month through March - possibly longer), and outside programs designed to get the entire community involved. The House Parties are an example of this; the T-shirt Project is another. "We'd like to get the community involved beyond what is being funded," Cindy said. The first House Party got things going with a bang. Cindy Gillespie and Edward Palmer were hired as hosts to keep the music flowing. "The amount they were paid is a fraction of their normal rate," Cindy said. "The other musicians, including Joe Moore, John McCafferty, Patty Cull and others, were there for the pure joy of it." Mary Ann and Danese offered their home—the famed *Bluebird*—and provided coffee and home-made cookies and received a receipt for their donation.

"We hope to see Second Sundays expand to include more of the community. Through the grant, we will promote this by displaying student's art work in various businesses and lobbies on the day of the house party.





Imagine churches offering special breakfasts on that day, businesses offering promotions or sales in addition to showing student works, galleries and shops opening their doors for a few hours, offering lemonade or iced tea...Imagine our main street lined with families out walking, visiting friends and neighbors, and heading home for an early dinner before going to a House Party. We'd like to see the house parties take on a life of their own, continuing long after the grant is done.

"The enrichment classes, too, are something there has long been an interest in. The grant will allow participants to 'test the waters': teachers will be paid; students will pay nothing more than materials fees. If the classes go over well, it's also something that could continue on it's own steam later. "I'm hoping, too, that the teachers will see art programs they'd like to repeat, which may result in the school allocating more money for arts programs in the future," Cindy concluded. From the rollicking start that entertained 37 people of all ages, it seems the people behind this program have hit on a much-appreciated idea.



Ed PALMER'S PARTY TUNES FROM BEAVER ISLAND



Old Time Beaver Island Music

To order, please send \$15.00 per CD plus \$1.50 shipping and handling to:

Ed Palmer's Music
P.O. Box 46
Beaver Island, MI 49782

www.edpalmer.com

CHARLEVOIX'S BEST Beaver Island Resident Rates



Make the Weathervane Terrace Inn & Suites part of your Beaver Island commute. **Only Island residents** receive discounted lodging rates all year.

FREE Deluxe Continental Breakfast
In-room Refrigerator & Microwave
Outdoor Pool • Indoor Hot Tub Spa Tower
Movie Rentals • Golf & Casino Packages

20% off 10% off
lodging off season lodging prime season

Weathervane Terrace Inn & Suites

616-547-9955 • 800-552-0025

One Eleven Pine River Lane
Charlevoix, Michigan 49720

Discount available to island residents only. I.D. required

Charlevoix County Commissioners Meeting

The Charlevoix County Board of Commissioners held their organizational meeting at 9:30 a.m. on January 8, 2003. All Commissioners were present. Commissioner Randy Frykberg was elected Chairman for a term of one year. Commissioner Victor Patrick was elected Vice-Chairman. Clerk Jane E. Brannon was appointed the Fiscal Officer.

Motion approved the placement of summaries of board minutes being placed in local newspapers for a six-month trial period. Board Liaison appointments were made.

The following meeting schedule was established.

Board of Commissioners:

Second Wed., monthly 3:00 p.m.

Fourth Wed., monthly 7:00 p.m.

Committee of the Whole:

As necessary (no set schedule)

Personnel/Internal

Government Committee

First Wed., monthly, 3:00 p.m.

Public Safety/Judicial/Building & Grounds Committee:

First Tues., monthly, 3:00 p.m.

Motion approved the December 27, 2002 meeting minutes.

Motion adjourned the meeting at 11:10 a.m. —Jane E. Brannon, County Clerk

The Charlevoix Airport

A long desired project for the City of Charlevoix Municipal Airport is receiving favorable consideration for funding approval by the Michigan Department of Transportation. A paved, lighted, and landscaped parking lot is a priority item that the people who use the airport, and the City of Charlevoix have long dreamed of. The current parking lot area poses a number of challenges including water ponds in heavy rains, mud traps in the spring and fall, and air heavy with dust in the summer months.

Estimated cost of the project is approximately \$900,000.00. Once final approval for funding is obtained from the Michigan Aeronautics Commission, the City of Charlevoix would contract for engineering design services, including a review of those plans by a traffic consultant. Construction of the parking lot is expected to commence in 2003.

As quoted by Karyn Brooks, Airport Manager, "We look forward to providing this pleasant addition to the airport for use by our Charlevoix and Beaver Island residents, and our visitors as well. We have such a nice looking terminal building, a beautiful landscaped berm by the highway, and this is just the icing on the cake!"

Charlevoix State Bank

38230 MICHIGAN AVE.
BEAVER ISLAND, MI 49782
(MEMBER FDIC)

WINTER HOURS

Weather Permitting

TUESDAY & FRIDAY

9:00 TO 2:00

(231) 448-2190

Michigan Land Use Institute Meeting

On January 23rd MLUI founder Keith Schneider and planner Jim Lively spoke with a group of Islanders, including several of its two dozen local members, Township officials, and interested residents. Keith described how he had quit his position as a NY Times correspondent in order to devote himself to fighting the urban sprawl he saw gobbling up the landscape, and how many people supported him as his work began to take effect. Jim talked about his many presentations to Planning Commissions in which he urged communities to identify their resources in detail in order to tailor means to protect them.

They were both inspiring and informative. Their citing of examples of what they had accomplished, from creating an alternative to the Petoskey by-pass to fighting the South Fox Island land swap to shedding light on the likely consequences of a planned new bridge across Traverse City's Boardman River, held everyone's interest. Those who fought the weather to attend were quickly convinced that the MLUI was one of the "good guys."

The planned half-hour of questions that followed ran into an hour because members of the audience not only wanted to know more about how MLUI policy might help Beaver Island, but

also wanted to tell them about our joys and difficulties, our satisfactions as well as our problems. Some of what was said was similar to what they heard elsewhere—how so much work falls on so few people, and how local attempts to protect a community can run up against overwhelming threats of litigation—but other statements were unique. In response they offered some specific suggestions, but at times could only listen and nod. It quickly became apparent that, to some extent, we were auditioning for a Beaver Island ombudsman—someone to whom we could address a variety, large and small, of comments and complaints.

All in all, the meeting was a wonderful exercise in expression that helped move the Island community closer, along with such enterprises as the Visioning Project, Leadership Retreats, Partnership Project, and the broad consultations aimed at creating a new Master Plan, to a unified vision of what we want to do and be.

A New Market

Kelly and Mike Collins are the new owners of the former Hodgson's Provisions, naming it the *Harbour Market* and moving in upstairs. Stay tuned for a report on the new offerings they provide.



The Convent in the Village

Beautiful Harbor View

Full Housekeeping Home
Sleeps 16

7 Bedrooms w/ sinks
Fully-equipped Kitchen
Beach Access
Great for Multi-Family Groups
Family Reunions
Business Retreats
Open Year Round
Weekly Rental in season
2-night minimum off-season

Call 448-2902
for more Information

Martin Well Drilling

- Residential and Commercial
- Water Wells: 4", 5", and larger
- Modern Rotary Well Rig

Also ...

- Pump Installations
- Well Repairs

If you want a well now,
I have the equipment.

Call Bud @ 448-2197
or 448-2397



Casa Builders

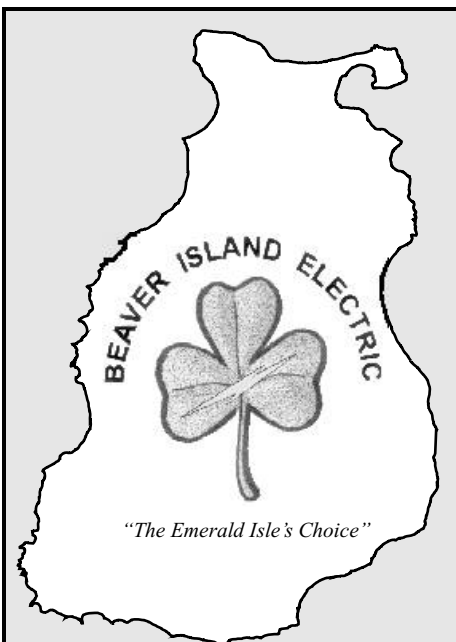
Gregory Larson, Designer/Builder



*Offering Quality Architectural Design Services to
Beaver Islanders for over 19 Years*

1514 Mifflin Street
telephone: (814) 643 5053

Huntingdon, Pennsylvania 16652
e-mail: greglarson@pennswoods.net



Mike Deur

Residential & Commercial
Electrical Contracting
Licensed & Insured

(231) 448-2093



A Web Site for those Traveling
to Ireland for the March 2003
Twinning Ceremony

www.beaverislandrealty.com/Ireland

News from the Townships

St. James, December 4:

Regular meeting of the St. James Township Board: all members present.

Donegal Bay Trail project to be re-bid in spring due to an error in the bidding process according to the State.

Another award was presented for the paving of the Main St./Michigan Avenue project of 2001 from the Michigan Association of Paving.

Rich Gillespie and Grace Matella were appointed on a month to month basis to the BITA.

The proposal to change Main Street from the Print Shop to the Public Beach to a one-way street tabled at this time. Supervisor asking for input from residents on this issue.

Board approved Chamber of Commerce membership.

Board approved re-appointment for two years for Jim McDonough, Judith Harmon ("Pinky"), and Mike Green to serve on Board of Review.

Board approved removing the language regarding the sign permit fee from the Zoning Ordinance and setting a standard \$25 fee for sign permit.

Board approved Gordon Heikka for snowplowing for the Township.

The request from EMS to enlarge garage area at Medical Center Building

for an ambulance will be reviewed.

St. James, January 2

Regular meeting of the St. James Township Board.

Board approved appointment of Jim Wojan and Don Vyse from St. James Township to help decide on a plan for the future of the Health Center Building. Two to be appointed from Peaine Township.

BITA appointments tabled for January for lack of quorum.

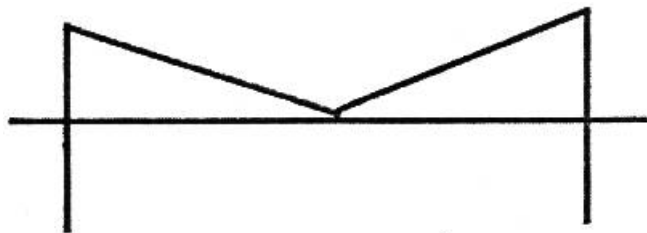
Rick Speck re-appointed to Health Center Board for one year.

Amendment to Lighthouse Grant Resolution approved to include \$2,500 match from the Township.

Board approved increase retroactive to Jan. 1, for the cost of green bags to \$2.25.

Letter read from Jackie LaFreniere requesting something be done with the piece from 9/11. Suggestions are the Library or Paradise Park. As a member of the Library Board, Jean Palmer stated this suggestion would be brought before the Board at their January meeting. The piece will be stored at the BITA building until spring and a permanent location can be found.

No decision on the one-way street at this time.



MONTAAGE

Many furniture lines – take advantage of our free design service.

Let us help you put art in your everyday living.

Open Friday & Saturday 10:00 to 5:00

Off-hours appointments available by calling the Store 448-2802,
Barb 2502, Beth 2922, Betty 2922, Jo 2345, Judy 2441, Nel 2495

26435 Donegal Bay Road. Across from the Library

Peaine Townshi, January 9

Regular Meeting. Members present: Works, Martin, Nelson, Morgan. Members absent: Lanier

MOTION Morgan, second Nelson to approve the 12-11-02 regular meeting minutes: approved.

MOTION Works, second Morgan to approve the 12-10-02 special meeting minutes, motion approved.

MOTION Works, second Martin to approve the current bills: approved.

Old business: Lake Geneserath dredging. Letter received from DEQ requesting more drawings, and a letter from landowner. Also, a \$50.00 permit fee is required. Additional paperwork will be sent on Friday.

MOTION Morgan, second Martin to appoint Paul Nelson as our township representative on the Medical Center Board for a 1-year term: approved.

MOTION Morgan, second Nelson to appoint Susan Myers to the Library Board for a 4-year term: approved.

Jeff Cashman gave a presentation on a Peaine Township Website proposal. Initial set-up design would cost \$100.00, then a \$10.00 monthly fee for updates and a \$20.00/hr. fee for major projects to be added. Some ideas were to include Peaine Township's history,

maps, zoning ordinance, recreation plan, and the township minutes. The board is in favor of the website and asked Cashman to prepare a contract for approval at the February meeting.

Medical Center report by Connie Wojan: Bids for the new Medical Center building will go out on January 24, 2003, and construction is scheduled to begin in April. Jim Wojan pushed in a road on the Medical Center land, for the cost of labor and fuel.

Public comment: Elaine West stated that the World Trade Center piece given to Beaver Island needs a place to be displayed out of the weather. Suggestions were the Library, Arranmore Park, or the Lighthouse Memorial. John Works will serve on a committee to get this project going.

Jude beats the odds

Word just in: Jude Martin is recovering from the brutal mugging he received last month. Our prayers go out to him for continuing improvement.

Chili Cook-off

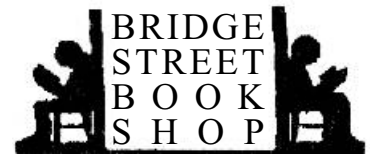
...is scheduled for March. Watch for the details to be posted on www.beaverbeacon.com and in our March issue. Hope to see you and your entry this year.



AFFORDABLE FLOORING & MORE

Ceramic-Carpet-Hardwood-
Vinyl-Laminates

Dan Drost (231) 645-5926



So many ways to stay in touch...
OPEN 7 DAYS YEAR-ROUND

407 Bridge Street
Charlevoix, MI 49720
(231) 547-7323

Toll Free Nationwide
(800) 729-3949

Fax (231) 547-0416
Web-Site charlevoixbooks.com
Special Orders Welcome!

Emerald Isle Hotel

In the heart of
St. James on the corner
of Donegal Bay Road
Beaver Island, MI

Please call us:
(231) 448-2376



Cross Country
Ski Rental
all winter long



www.emeraldislehotel.com

ARCHIPELAGO



BUILDERS, L.L.C.

Building excellence
into custom homes
since 1987.

Gary A. Damstra
Licensed Builder

26145 Back Highway
Beaver Island, MI 49782
(231) 448-2370

The Way it Was

Seventy years ago, in February of 1933, the Depression was roaring through the country and affecting Beaver Island as well. When fishing closed down in the fall, people began to look around for any paying work, but there was very little. A construction project had been funded—the replacement of the *Little Red Schoolhouse*, which had burned, by the Roosevelt School.

The only problem was, the materials were in Charlevoix, and the Lake was frozen over. The ice was thick, but covered with drifts of snow. It would be a dangerous crossing, but something had to be done to put meals on the table, so it was decided to take the risk.

Emmett McCann took charge of the situation, organizing a party of 5 men and 2 trucks to head for Cross Village on February 15th starting at 8:30 am. A compass course was laid out for Cross Village. Charley Martin and Stan Floyd went first in an old Dodge touring car converted to a truck and towing two sleighs. They had to get out and sound the ice every so often. Bringing up the rear was Pat the Truth in a 1 ½ ton Ford truck, with his brother

Archie and Emmett McCann.

The ice was smooth and for the first few miles the going was good. By noon they were within six miles of the mainland, but here they ran into ridges of ice pushed up by the changing weather that were too tall to get past. They ran into some fishermen who did not think they'd be able to make it to Cross Village, but said cars had been driving out on the ice from Charlevoix. Thinking they might find a route there, the Beaver Islanders headed south.

Their spirits lifted when they caught sight of Charlevoix's water tower, but then the lead vehicle hit a severe crack in the ice and came to a stop, with the sleighs they were towing slamming into them powerfully enough to puncture the gas tank. Charlie jumped down, pulled the sleigh and truck apart, and found the hole. Holding it shut with a finger, he told Stanley to find or make a plug. After racking his brain, he came up with the paper bag in which they'd wrapped their lunches. All that was left in it were a few fig cookies, which they mashed up and used, with shreds of the sack and melted ice, to make a kind of



Licensed & Insured

Free Estimates!

DONE WHEN YOU WANT IT DONE!

ERNIE MARTIN

General Contractor

New Construction Additions Pole Barns
Garages Decks

Also: Driveways, Excavating, Foundations,
Tree & Brush Removal

(231) 448-2342



Beaver Island Lodge
Featuring

Nina's Restaurant

Where The Cuisine Is As Wonderful

As The View

(231) 448-2396

paper mache. They tore a handkerchief into strips and tied them together, and then used their concoction as paste to make their linen bandage stick to the tank. After jacking up the truck and shoveling ice chips into the crack to fill it, they resumed their trek.

The light snow that had dogged them began to thicken, and they lost sight of the water tower. Luckily, the winter mail was being carried by plane, and the pilot, a man named Harder, saw their meandering path from the air and figured out that they were disoriented. He made three low passes, getting their attention and pointing them in the right direction. But as they approached the beach their progress was blocked by a dauntingly huge ridge of pushed-up ice. They had come so far, but the ridge extended in both directions as far as they could see and it looked like they would not be able to reach their load—until dozens of Charlevoix residents who had heard about their approach grabbed picks and shovels and marched out onto the ice to chop them a channel. They cut a path, and the intrepid Islanders were able to reach shore just as darkness fell. Needless to

say, the arrival of the Islanders was sufficient reason to hold several parties at which post-Prohibition celebrations were carried on throughout the long night.

The next day no one was in shape to load the trucks, but on the following day everyone was mustered out to strap materials onboard and send the caravan back across the lake. No one had come up with a way to permanently patch the ruptured gas tank, but the make-shift band-aid looked like it might hold for one more trip.

Their initial route was so far to the north that they decided to try running a straight line to the Island. The larger truck was now pulling the two sleighs. The ice was clear and fine, and they put several miles under their belt before they came to a 30'-wide crack. The open water had frozen over, but the ice proved to be only an inch thick. Nonetheless Charlie and Stanley backed up, got a running start, and managed to make it across with their lighter vehicle. Archie and Emmett got out of the big truck and stood back while Pat the Truth steered in a large loop to get up speed to try the crossing. Just in

case, as he approached it he climbed out of the cab and stood on the running board, steering with one hand. The ice visibly sagged, but to everyone's relief did not give way.

Soon Sand Bay was off to their left and they were running north, parallel to the shore. They came to another frozen-over crack, and decided to try the same trick. This time the ice cracked under the second sleigh, which sank down enough to catch its runners and tear them off. They unhitched it, drove on to the harbor and into St. James, and then came back with an unloaded sleigh for the rest of the materials.

The mission was a success, providing winter work for a handful of men. The school was completed that spring, and held classes the following semester for kids from Greentown and parts south. After it closed, it became Ruth Colby's summer home. Now that she too has passed away, it's on the market, ready to have its history extended through some as-yet unknown owner's dreamed-up make-over. The basic structure still stands tall with pride over its rough journey seventy years ago across the formidable ice.



Ed Wojan Realty

Your Key to BEAVER ISLAND

Edward B. Wojan – Broker

26300 Back Highway

P.O. Box 86

Beaver Island, Michigan 49782



Parcel B-3 of the Old Boyle Family Farm (40 Acres)

Parcel B-3 (40.501 acres) on the south side of Darkeytown Road (a/k/a Barney's Lake Road). This is the SW 1/4 of the SE 1/4 of Section 33. This is a secluded, yet quite close to town, 40 acre parcel that could be used as a good hunting camp parcel. All the young white pines and the junipers growing up in the old clearings can be easily removed or saved to provide openings or hedges for a good inland site for fields for deer or rabbit hunting. The parcel will be reached by a new 40 foot wide private road easement for utilities and access. Seller is paying for the opening of the center line of the easement. Very pretty acreage but 2,000 feet off the public road which gives a camp owner real privacy, but only one mile from "the Four Corners". Call and ask Ed for survey copies and aerial photos of this parcel.

Asking price- **\$80,000.**

Real Estate Office
Toll Free Number

(231) 448-2711
(800) 268-2711

Collins Construction

Michael Collins
Licensed Builder

New Construction
Remodeling
Specializing in
Metal Roofs

27150 Daideenog's Rd.
Beaver Island, Mi
49782

231-448-2923

News from the Wildlife Club

The Beaver Island Wildlife Club met Thursday, January 9, 2003 to kick off its new year. Attendance was good. Plans were made for goals to accomplish in 2003. January was the first of the monthly meetings to be held on the second Thursday of each month at the St. James Fire hall.

High on our list of projects is whitetail deer habitat planting and clearing. A committee was appointed consisting of Phil Wyckoff, Doug Tilly, and Alvin LaFreniere. State-owned areas will be earmarked for planting and clear-cutting and the list submitted to the DNR for permits. We are encouraging land-owners to dedicate a small plot for habitat also, and have agreed to pay up to \$1000.00 for 5 one acre plots or the equivalent of 5 acres this year. Owners must contact a committee member to have their site approved. Act now to take advantage of this offer. Ideally site preparation should begin in the spring, with planting occurring in September.

In an effort to collect data on the deer harvest, we are going to offer a "Successful Deer Hunter Contest." Details will be announced later but it will encourage all deer hunters to register all deer taken

and be eligible by drawing for a substantial first prize and very nice follow-up prizes. Ivan Young will chair the committee and Joe Williams and Mark LaFreniere will serve.

There is evidence to support a substantial drop in the whitetail deer harvest. It may be a reflection of something more than just unlucky hunting. By our estimates the harvest is down by 50%. We agreed to contact Rebecca Humphries, Chief of the Wildlife Division of the DNR. There are so many unanswered questions regarding our herd, and we want to obtain the very best advice we can at the state level.

We will take part in a turkey census in late January for the DNR. Flocks are scattered, probably because of the lack of snow. If you have a flock in your area you may call Mark LaFreniere for corn at 448-2220.

We are still moving ahead on our walleye-rearing pond project. Jeff Powers has worked hard to keep this a viable plan. He says it will be ready by spring—I have faith that it will!

Join us for our February 13th meeting. We need YOU to make a difference.

—Lois Williams, secretary

Beaver Island Marine



At Your Service:
Transient Slips
Fuel - Charts - Shipstore
Repair - Storage - and More

Gas Station and Car Rental- Gold Card Savings
Check out our ship store:
Gifts, Tackle, and More.

501 Main - P.O. Box 76 - Beaver Island, MI 49782
(231) 448-2300 - FAX (231) 448-2763

www.beaverislandmarina.com

VAN & GEO RENTAL

Pick up at Boat or Plane



Call: 448-2300

BEAVER ISLAND MARINE

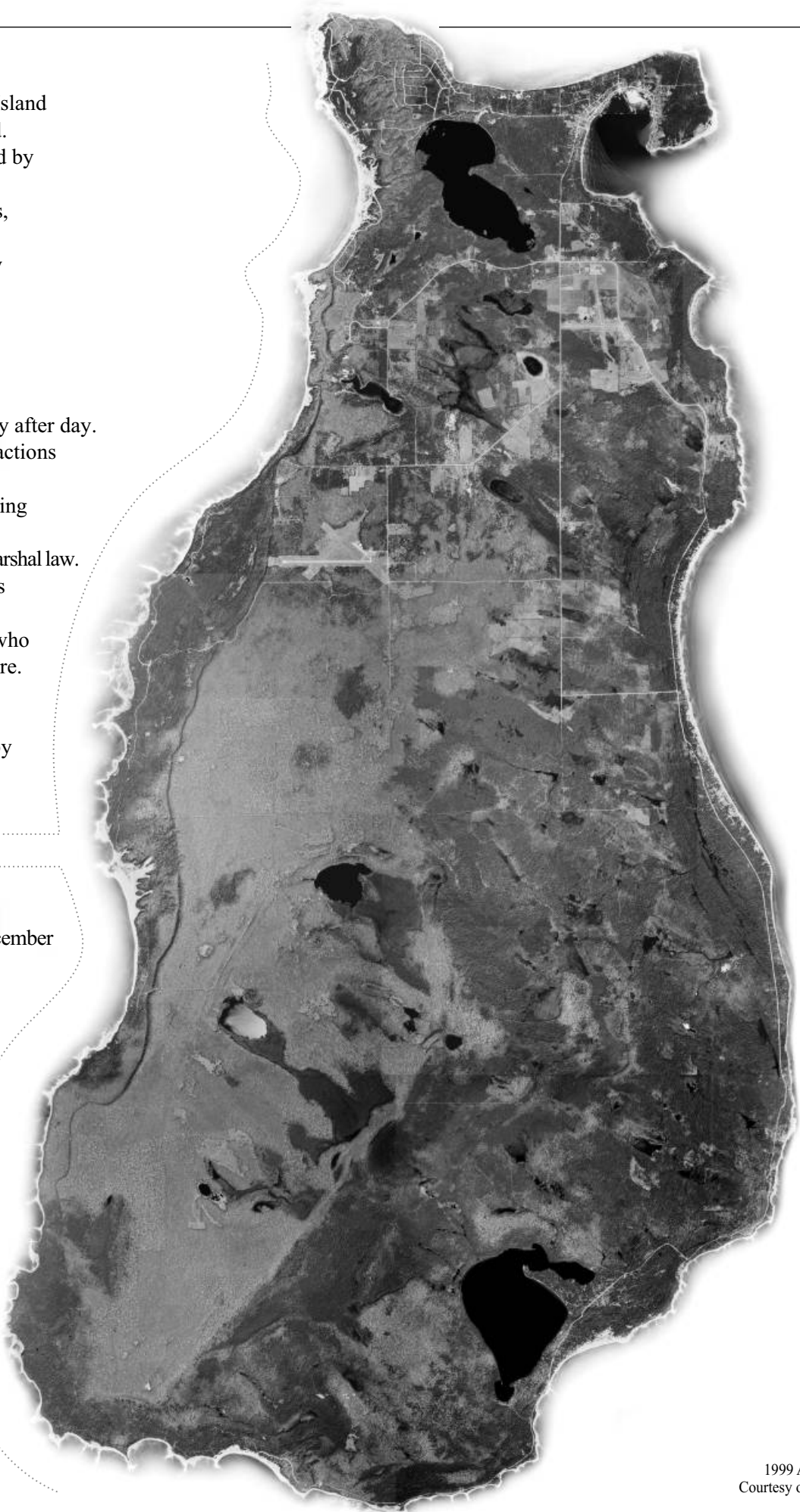
E-MAIL: PatA@BeaverIslandMarina.com

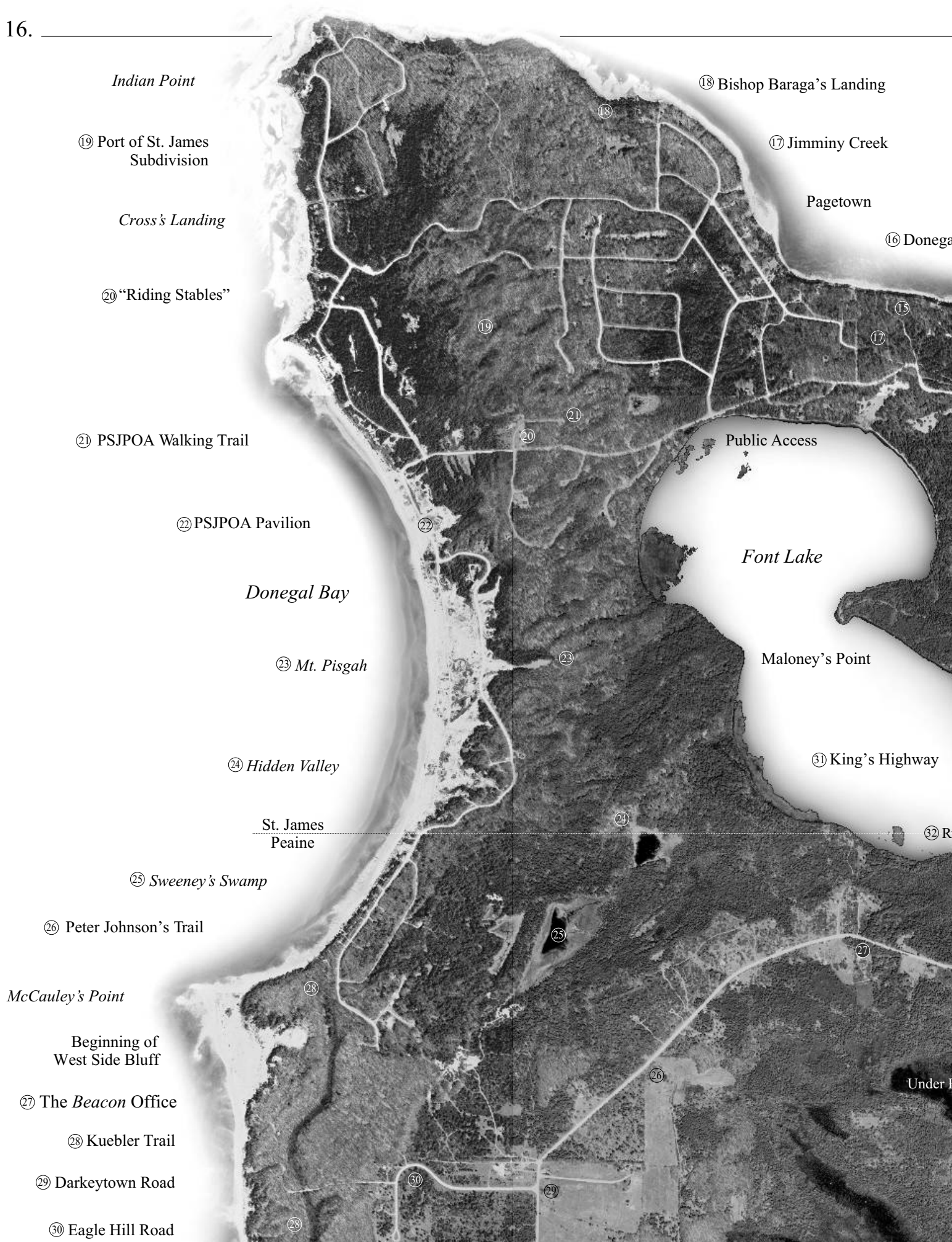
Untitled

The enchantment of the Island
 is diminishing, my friend.
 Has it just been destroyed by
 those who would lend
 restrictions and mandates,
 among other things?
 It makes us wary and shy
 and distrust it brings.
 Some move to the Island
 because it's so quaint,
 then try to change it
 but instead they taint
 the things we enjoyed day after day.
 Overlooking minute infractions
 was the Islander way.
 Our freedom we see waning
 and after all
 the new way to us is like marshal law.
 The ways of the Islanders
 we hold so dear
 are challenged by those who
 should probably leave here.
 For why do they come
 to change all the ways
 that have kept us so happy
 all of these days?
 —Richard Burris

The Park

At the top of the hill in December
 It was snowing hard
 I remember
 Seeing the bunny rabbits
 Hop around
 Them camouflaging
 With the ground
 Jumped off the jump
 High in the air
 Soared like birds
 Everyone Stared
 Hit the ground
 With the softest sound
 Mounted our sled
 One more time
 Went off the jump
 Went so high
 We touched the sky
 —Olivia Strang
 Age 9, Rocky River Ohio
 & Beaver Island, Michigan





HARBOR VIEW MOTEL



on the hill overlooking the harbor

**MAY to NOVEMBER
OVERNIGHT or
WEEKLY
SWIMMING POOL
CABLE TV**

For Reservations Contact:
Harbor View Motel
P.O. Box 104
Beaver Island, MI 49782
(231) 448-2201

The Partnership Project moves along

On January 21st members of Beaver Island's Partnership Project met at the Peaine Town Hall. Since one of its goals is to foster communication between the various infrastructure groups involved with the Island, the first half hour was given to reports from various members about their projects. Pete LoDico talked about the Senior Housing's attempts to find funding for Phase I of its planned 3-stage program, a 6-unit structure behind the new Rural Health Center that might cost about \$600,000. The problem his group has run up against is that the site does not meet the expectations of state agencies such as the Michigan State Housing Development Authority because it isn't in the center of town and lacks sidewalks and extensive lighting, and the relatively low budget doesn't show up on many agency's radar. Anne Glendon spoke about the Health Center Board's attempts to find funding for the ongoing operation of the new facility, and was fairly optimistic. Krys Lyle too was encouraged about the Friends of the

Trails meeting their goals of providing access to several public sites. Larry Sullivan, the Charlevoix planner, filled the group in about a new survey being sent to 13,000 county voters to help establish visual preferences for what we want our community to look like.

The attendees then broke into three subcommittees to discuss what small steps each could take to move closer to their goals. The "Eco-friendly Economic Development and Technological Access" subcommittee decided to do two things. First, they intend to develop a list of potential eco-friendly businesses that might be appropriate for Beaver Island. Second, they will try to schedule two classes on web-site design for March and April.

The "Public Safety and Health" subcommittee refined its general list of objectives, placing two items at the top: helping provide a second full-time deputy for Beaver Island, at least in the summer, and helping the Rural Health Center, the EMS, and Senior Housing obtain the necessary resources to

HOME FOR SALE

27970 Wandering Woods Court



New home for sale in Port of St. James subdivision. Open floor plan includes 2 bedrooms and a large loft. T&G pine cathedral ceiling over great room. Covered porch in front and rear deck both have cedar decking. Exterior vinyl siding. Beautiful wooded lot is quiet and secluded. Approximately 1000 sq. ft. The perfect cozy getaway. \$129,000.

Contact Ed Wojan Realty
Office (231) 448-2711
Toll Free (800) 268-2711



East Wind Spa

"It was the best present I ever got!"

East Wind Spa Gift Certificates

We have new specialty clothing items and accessories

Try our *Petronia Skin Care Line*
Several Facials to choose from
"Tremendous" Visual Results

*Hair Care * Massage*

*Hands & Feet * Sauna*

Packages & Gift Certificates

Call for appointments

(231) 448-2881

NEW SEASONAL HOURS

complete their new facilities. They also want to play a role in the new uses for the old Med Center building: possibly relocating the Sheriff's Substation there and establishing a social services umbrella agency there.

The "Environment and Access" subcommittee talked about preparing a fact book on Beaver Island to disseminate information about public land—including Garden Island. They were excited about the upcoming Peaine Township website as a way to provide information about such things as planting trees and dune grass, and coordinating the efforts of the Recreation Plan, the Wildlife Club, and the Youth Consortium.

The next meeting will be on March 18th at the Peaine Hall at noon.

New at the Library

The Beaver Island Library is now subscribing to the *Wall Street Journal*, *U. S. A. Today*, and *Value Line*, which contains current information about investments.



Beaver Island's

OLDEST PUB

and its

FINEST FOOD

Monday Night Football
Drink & Munchies

Tuesday Night Pizza

Buy 1, Get 1 at 1/2 price

Wednesday

Pool Night and Steak Fry

Thursday Ladies Night

\$1.00 off & cards

Friday

Fish Fry

Saturday Tailgate Party 12-5

\$2 drinks

Brunch **Sundays** 10-2

Family Dinner; Kids Specials too!



Serving Food:

11:30 am - 8:00 pm weekdays

11:30 am - 9:00 pm weekends



ROY ELSWORTH
ASSOCIATE BROKER

MIKE COLLINS
SALES ASSOCIATE

P. O. Box 3
BEAVER ISLAND MI 49782
(231) 448-2433



**Complete
Interior
Design
Service**

- Furniture
- Flooring
- Bedding
- Window Treatments
- Accessories

bartlett's
HOME INTERIORS
HOMES DESIGNED WITH YOU IN MIND

6499 N. M-66 Highway
Charlevoix, MI 49720
(231) 547-2884
(866) 547-2884

www.bartlettshomeinteriors.com



Getting back ... to Work

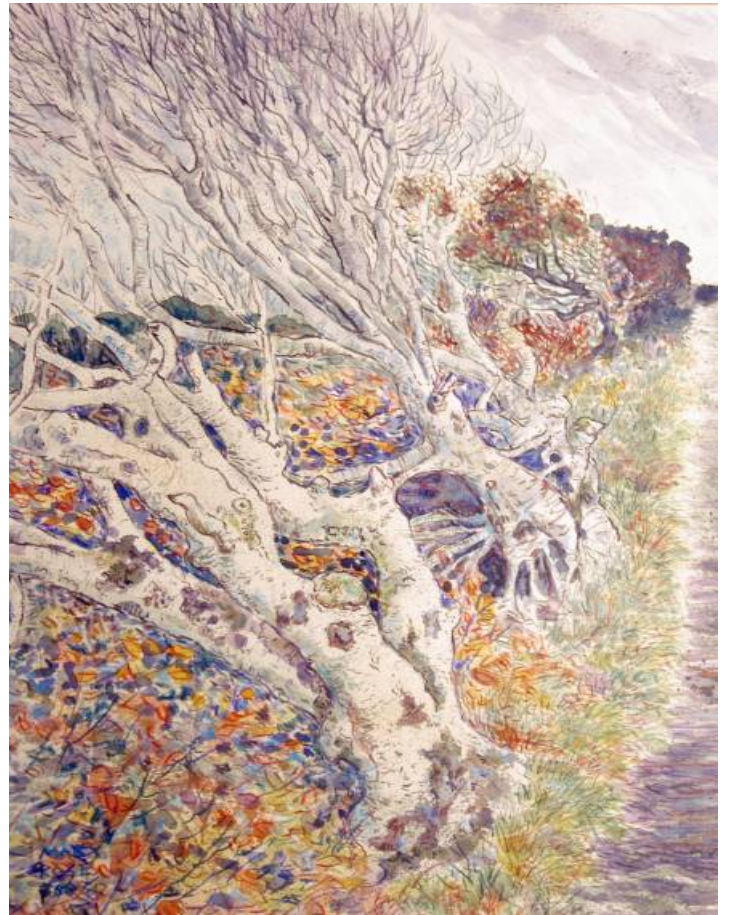
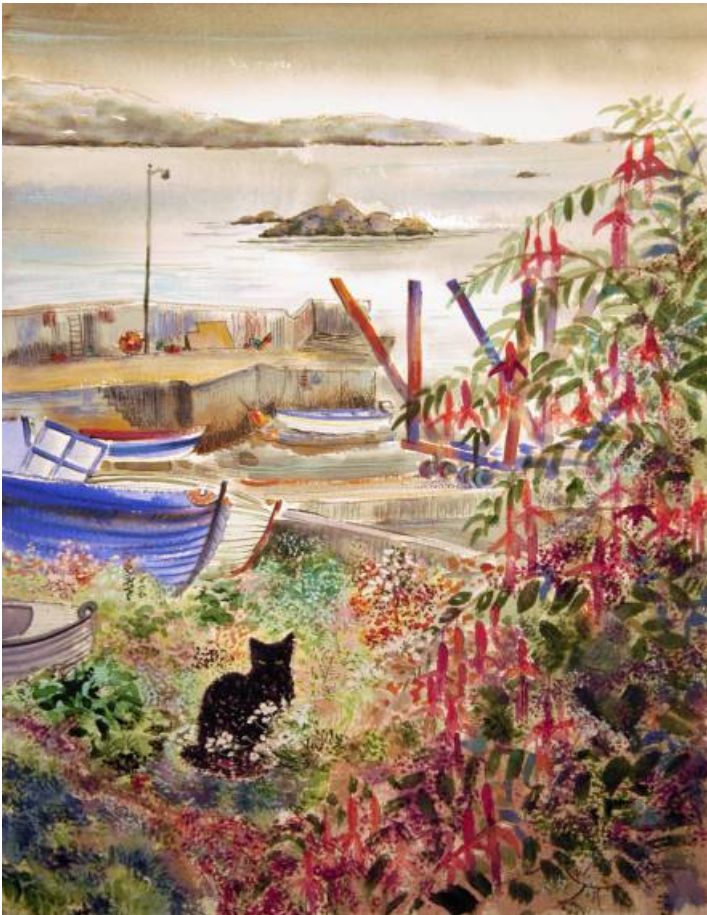
Different people have different reasons for taking a long trip. Having fun is a top priority for some, but for others it's to fuel up on inspiration in order to be more productive when they come home. Perhaps there's an element of guilt involved: after treating oneself, one has to pay the price. And "expanding one's horizon" is another frequently cited excuse.

For visual artists like Mary Scholl, a byproduct of the vacation she took with Marge Peters last fall was to add new elements to her composition. When we stopped by her studio last week she was engrossed in a new bout of creativity. She had pulled a few dozen of the color photos she took from the six albums in which they were placed,

and had already reproduced the dazzling, colorful images in a dozen new paintings. To see such an outburst was so thrilling that we wanted to chip in right then and there to send her even farther and for longer next year!

Posters of these and other paintings will be available at the Toy Museum this summer





Powers' Ace Hardware

YOUR NEIGHBORHOOD ACE **HARDWARE**

\$3.⁹⁹



18" Tool Caddy
Does same work as for
tools supplies. 20661S2



\$1.⁴⁹
Carton Sealing Tape
24" x 22.2 yards
2 ea. 907C9



\$4.⁹⁹
All-Purpose Duck® Tape
1.88" x 60.1 yds. 40402

Begin a room with a great finish.



\$19.⁹⁹
gal
Royal Touch Eggshell Wall & Trim
Gloss (100% Acrylic) 375 ml 16814F
Satin 1954667... \$20.99
Flat 1954668... \$18.99
Semi-Gloss 1985428... \$23.49

ACE
The helpful place.



\$11.⁷⁹
qt
Great Finishes Poly-Finish
Clear, durable finish. Free-lust.
Good satin, and semi-gloss.
16001, 03, 1996701

Powers' Ace Hardware

(231) 448-2572

Fax (231) 448-2762

26259 Main St. Beaver Island MI 49782

Bill Welke

Beloved family and dearest friends, we would like to thank you for all your cards, calls, and visits. Your sympathy, caring, help, and tears brought comfort to us at this most sad time. We will hold a Memorial Service and interment on April 26th at Holy Cross Church and Cemetery.

—Betty, Jean, and Paul

Ruth Arden

We would like to thank everyone for their kindness and support, and, most of all, the wonderful expressions of sympathy we have received. We are very grateful for all who helped at the Hall and put on such a beautiful luncheon, for the EMTs and their efficient and considerate manner, for the Medical Center's kindness, Island Airway's efficiency, Charlevoix Area Hospital's wonderful staff, and for everyone else who extended a helping hand to Ruth and our family. It is truly a blessing to be part of such a loving and caring community. It is times like these when we realize how lucky we are to live in such a wonderful place as Beaver Island. Again, thank you, one and all.

—The family of Ruth Arden: Glenn Arden, Linda and Kevin McDonough, Michelle and Tim Furness, Shane, Erin, and Colleen McDonough

The Fire Department Auxiliary
Presents

The 4th Annual Beaver Island Celebrity Roast

Honoring

Jerry LaFreniere Sr.

Saturday, May 17th @ 8:00 P.M.

Holy Cross Hall

Cash Bar

Free Will Donation

Anyone Wishing to Speak or Write

Please Contact:

Dawn Marsh @ 231-448-2910

Box 481, Beaver Island, MI 49782

Please Join Us in Celebrating The
Life of "Our Popeye"

Benefit: B.I. Fire Department Auxiliary

CARY CONCRETE LTD

Greg Cary - Owner

Licensed Builder

Automated Batch Plant * Redi-Mix & Insulated Foam Poured Walls

Garages * Basements * Fireplaces * Sidewalks * Driveways

Concrete Pouring Available

Unlimited Masonry & Cement Work Supplies

Call Now for a Free Estimate

(231) 448-2242

36520 Kings Hwy.

Beaver Island, MI 49782



On This Date

Ten Years Ago

The front-page story in February of 1993 concerned the recent bids for the BICS gym addition, all of which were too high. The architect's estimate had been \$750,000; the low bid (of 7) was \$952,000. The School Board and the architect began working with the low bidder to devise a way to change the specifications so a building that satisfies most requirements can be built for an affordable price. After several meetings, and consultation with Island contractor Gary Damstra about likely costs, a reduced program was agreed on and the low bidder, Hallmark Construction of Traverse City, was given a contract.

Cindy Gillespie and Tom Cole organized a Road Rally for mid-February in which 14 cars were sent careening around the Island by 23 mysterious clues based on history and geography. The winning team (Phil and Joan Becker, Loretta Slater, Colleen Martin, Karen Wojan, and Shelly Hayes) finished in 3 hours and 54 minutes.

Helen Collar wrote a letter to the editor defending the importance of the name "Darkeytown" by talking about what a handsome man "Darkey Mike" O'Donnell had been, with his dark skin and curly hair. He was "one of the dark-complected Irishmen whose brunet coloring is said to have come from the

sailors who reached Ireland in the fleeing ships of the Spanish Armada," she said. "Let us not lose our unique and colorful place names." Nevertheless the Peaine Board voted to rename Darkeytown as Barney's Lake Road, although Sloptown was allowed to remain instead of becoming Old Orchard Road.

Two men finally fulfilled their dream by walking here from Charlevoix. Ivan and John Whitley set off on a day when it was five below and the winds were whipping at 20 to 25 mph. With their pockets stuffed with candy bars and each carrying a thermos of coffee, they left at 7:45 a.m. and arrived before dark.

The Medical Center was designated as a Rural Health Clinic. "Under the program the Center can be assured its operating expenses will be covered permanently, assuming it passes periodic inspections."

Twenty Years Ago

Nancy Gebert told an interesting story in the guise of a Deputy's Report: "While watching the 'Icebreaker Martin' try to clear a channel out to open water on the afternoon of January 24th, I observed a blue Chevy station wagon drive onto the ice toward the area where the Martin fish tug was working. After some fishtailing and sliding, the car reached two men who had been working on the ice. One of them got in with the driver,

who then slid the car in an arc and began to head back to shore, a goal the car never reached. "Suddenly, before my startled eyes, the car began to sink. The right rear wheel started to go down first. My frightened yell brought Ham running from the other room. After what seemed like an interminable time, the door on the driver's side opened and the driver emerged.

"After watching for several long moments and realizing that the passenger was still in the car and would soon be headed for an icy bath as the car slowly settled through the ice, Ham headed for our apartment and his ski boots; skis would be the fastest way to take a lifeline out if a rescue attempt was necessary. "I continued to watch as the second man working on the ice started running toward the car. After what seemed to be an eternity of horror wondering if a life was going to be lost, the passenger emerged from the car. A knee-weakening sense of relief swept over me, and I announced to Ham that all were safe.

"The driver of the car then tied a line to it and began removing everything he could carry from inside. By this time the car had rolled completely onto its right side and was slowly disappearing from view. As its two passengers stood back and watched, the car finished its descent by emitting a crown of steam as Lake

25 Years Experience with Trees	ISLAND TREE CARE Inc.	FREE Consultation and Estimates
Fully Insured References Available		
<ul style="list-style-type: none"> * PROFESSIONAL TREE TRIMMING * STUMP REMOVAL or GRINDING 	<ul style="list-style-type: none"> * LOT CLEARING enhance your views upgrade your trails * TREE REMOVAL we use environmentally- friendly equipment * STORM CLEAN-UP * LANDSCAPING create a mini-orchard plant rye, clover, or shrubbs 	<ul style="list-style-type: none"> * FOR EMERGENCIES, We're AVAILABLE 24/7 
Prompt Professional Service	Please Call (231) 448-2167	Carl Rasch (owner) P.O. Box 474 Beaver Island, MI 49782

Michigan's fingers closed around the engine. That'll be good bass fishing, another observer remarked from shore. The two young men then hiked back to shore with sheepish grins on their faces and the six-packs, propane torch, and flashlight they had rescued tucked under their arms."

Thirty Years Ago

The winter 30 years ago was a lot like this one: cold enough, but hardly any snow. The road to the South End was open, and there was very little snowmobile action. This was a big break for the deer herd, both in terms of allowing them to forage and having a better chance against their predators, our coyotes. Because they have so many options no deer have showed up yet at the demonstration timber-cutting project organized by local DNR officer Bill Wagner on state land south of Greene's Lake. Rabbit hunters were quite successful, with Melvin Napont coming home with his limit on most attempts. Perry Gatliff was finally able to get his shanty onto the harbor, but after three days he hadn't had a bite—despite moving it from place to place.

The Game Club's resident pilot, Bill Welke, came up with an idea for placing the mineral-rich salt blocks prescribed for our deer on Garden Island: drop them from the air, with the assistance of

bombardier Phil Gregg. A full day's work was accomplished in a few minutes with this trick. Bill also offered a class in snowmobile safety to anyone from 5th graders up, and apprised 13 students of the do's and don'ts. In yet another example of how the Island uses its best people to the fullest, Bill stepped in to take over his son Paul's position on the Zoning Board while Paul spends five months at Fort Leonard Wood. And he will serve on the Board of Revue.

Deaths reported included that of Elston Pischner and retired Coast Guardsman Robert Somerville, who had a cottage at the South End.

This issue included an episode of Phil Gregg's Beaver Tales about the first federal mail contract, given to Andy Gallagher and then Dan Green. They carried the mail from Cross Village in a sail boat, probably a double-ended 36' "Mackinac Boat." The first steam vessel to go on the run, he said, was Captain Peter D. Campbell's Nellie in the 1890s. Because of the demand Captain Campbell decided the Nellie was too small and purchased the Eric L. Hackley, with which he established a regular mail and passenger run between the Island and Charlevoix.

Forty Years Ago

Now here was a winter: -14 in mid-January. "High banked roads, frosty

pinos glistening in the sun, fence posts wearing top hats of snow, the smell of burning maple and beech in the clear, crisp air, red-nosed youngsters trudging to school ... with a warm fire, good friends, and a deck of cards, this is a fine Beaver Island winter!"

Rogers Carlisle reported that two of the planted turkeys were begging for hand-outs. Ice-fishing was spotty, but Budger and Perry Gatliff were able to net some perch. An excursion to Lake Geneserath by some men from town was not successful, though. Passings included Robbie Gibson, Mrs. Herman Pischner, and Ralph Rutt's cat, which Milt Bennett credited with doing an exemplary job of keeping Lake G's shores free of dead fish.

Dick LaFreniere, never a Republican, received a rocking chair with a card saying, "Thanks for all your help in the last election. George Romney." He swore he would never sit in it --until he discovered it was a practical joke played by Gary Richardson and Bud Miller, two friends in Mancelona. That made it okay, and from that point on it was hard to get him out of it.

On the school honor role were current Islanders Rich Gillespie, Ron Wojan, Sandy LaFreniere, Jeane Wojan, and Ed Wojan.

Alvin LaFreniere came home from CMU between semesters.

**How do you *Beat The Mid-Winter Blahs...*
...with *Awesome Food!***

The Island's Best Food at it's Lowest Prices

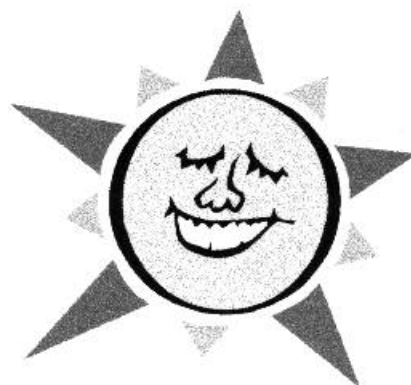
Valentine's Day Specials:

Table d' Hote or Ala Carte

Call For Details

Stoney Acre Grill...

Great Home Cooked Food In A Bistro Setting



Lunch

11am-2pm

Dinner

5pm-8pm

Dinner served 'till 9 on Fri/Sat

Tuesday thru Saturday

Sunday Breakfast Buffet 9am-1pm

Fresh Donuts between 10am-11am

Tel. (231) 448-2560

Fax (231) 448-3125

ZKE DESIGN, Inc.

**MICHAEL H. KASUSKE
OWNER**

◆ **RESIDENTIAL** ◆ **COMMERCIAL** ◆
◆ **DISTINCTIVE LOG STRUCTURES** ◆
◆ **CUSTOM DESIGN** ◆

(231) 347-9034 **FAX: (231) 439-5525**
CELL: (231) 645-4335 **email: ZKED@freeway.net**



**ROYE H. MEIS
CONSTRUCTION**
Licensed - Insured

**NO JOB TOO SMALL
FREE ESTIMATES**

**P.O. BOX 1202
BEAVER ISLAND, MI 49782
231-448-3036**

Out On A Limb **Nautical & Natural Gifts**

If you need assistance, call us at home 448-2808



**26070 Main St. Beaver Island MI 49782
(231) 448-2598**

Edith Burhans 1913-2002

On November 12th of last year Edith H Burhans passed away at the Lakeview Continuing Care Center in Lawton. She was born on Beaver Island on June 23, 1913, the daughter of James H and Katherine (Allers) Gallagher. She graduated from high school in St. James in 1931, and was the Salutatorian. She was crowned Miss Beaver Island that summer.

In 1938 she married Robert Burhans, who preceded her in death in 1993. She was also preceded in death by sisters Margaret McCann, Dorothy McCann, and Mae Coppens, brothers James, Norbert, Leo, Billy, and Rt. Re. Msgr. Victor Gallagher. A member of St. Mary's Church in Paw Paw since 1965, she leaves children Robert Burhans Jr. of Kalamazoo, Joan Pipes, Karen Pennington, and Martha (Lewis) Turner of Lawton, Jon (Catherine) Burhans of Portage, Victor (Karen) Burhans of Morrison, and son-in-law James Pipes Sr. of Lansing, 12 grandchildren and 10 great-grandchildren, brother Earl (Mary) Gallagher of Traverse City, sister-in-law Delores Gallagher of Riverdale IL, brother-in-law Jack Coppens of Charlevoix, many nieces, nephews, and friends. All who knew Edith remember her for her great beauty, her kind and loving nature, and her deep faith.

She kept in touch with several Island families, and has relatives here. She visited as often as she could, including for a week last summer.

Chamber Citizen of the Year

At the recent Board of Directors meeting, officers were elected for 2003: Kathy Speck (President); Bill Thomas (Vice President); Roy Elsworth (Treasurer); Steve West (Secretary). Other serving directors are Theresa Higdon, Pat Anderson, Rod Nackerman, Sheri Timsak, and Jean Kinsley. The directors adopted the Citizen of the Year selection criteria that was introduced last year when Don Vyse was voted by the Chamber to be the first Beaver Island Citizen of the Year. Criteria: An individual, couple, organization, or business that has made a significant contribution to making Beaver Island a better place to live, work, or visit.

Nomination forms are available at the Chamber office, Mon-Friday from 8 am to noon or on the web from www.beaverbeacon.com/citizen-of-the-year Anyone can submit a nomination—you don't have to be a member of the Chamber of Commerce. The deadline is Friday March 21. The award banquet will be Saturday April 12 at the Shamrock. Banquet tickets go on sale March 3 at the Shamrock and the Chamber office.

Phones for low-income Families

With help from the federal government, TDS is committed to helping low-income families get telephones in their homes at an affordable rate. "Phone service is more than a convenience," TDS Manager Charlene Burnison recently stated. "It's a link to emergency services, the way we look for jobs, and the way we stay in touch with family and friends. The importance of having a telephone can not be overlooked." For more information, contact TDS through tdstelecom.com or call their office.

One Hundred Years Ago

Charlevoix Sentinel Feb. 9, 1903

"No mail since January 21, but all is calm and serene on Beaver Island. The Garden Island Indians and white men were over on the ice Saturday. John Bonner, who is working on Hog Island, reached Beaver Island the day before. Nothing heard from High Island yet."

Charlevoix Sentinel Feb. 12, 1903

Local News: "Engineer Sherman has a force of men at work repairing the boiler of the steamer *Beaver*. This is no slander on the *Beaver's* boiler, because it is a first class affair. Henry begins to think that fitting out time is close at hand."

"Patrick Roddy, a son of the late Capt. Roddy, has been promoted to 5th assistant chief of the Milwaukee fire department."

"Capt. P. D. Campbell has been awarded the Beaver Island mail contract for a period of four years from July 1st, 1903, summer and winter."

"It begins to look as if Beaver Island was doomed to wait for the first boat before they got any mail. Judging from present conditions, navigation will open in March."

Charlevoix Sentinel Feb. 19, 1903:

Local News: "The weather the past three days has probably provided a bridge for the Beaver Island mail."

Charlevoix Sentinel Feb. 26, 1903

Local News: "The mail came over from St. James on the ice last Friday for the first time this winter."

Beaver Island News: "Fishing through the ice is the popular pastime around the harbor now."

"More business on Beaver Island this winter than for many years previous."

"Dominick G. Gallagher who has charge of the 'Head' Light this winter was in town over last Sunday."

"The Dominican Sisters have changed their residence from the harbor to the new Sisters' home near the church."

"Preparations are rapidly being made to harvest the ice crop. Mike McCann is getting a foundation laid to move his red ice house from where it now stands, to a more convenient location over the water near the dock."

"The Island has not been burdened with snow so far this year, scarcely enough in the woods to haul timber on, and as for the north end of the Island we have yet to get enough snow to have a good sleigh ride all around the harbor. Since the harbor froze over, when anyone wanted good sleighing, they have had to take the ice for it."

"Logging operations are being carried on in the woods near the 'Head' this winter by several parties who are running camps. Foremost in point of numbers employed being the Morrow Bros. of Central Lake, Malloy Bros. of the Island, Gill and Green, Thomas and Rice and Boyle Bros., all of the Island, are also busily engaged getting out the various products of the forest."

"The Beaver Island Lumber Co. is making rapid strides toward the completion of their lumber and shingle plant. The four large boilers are all in position, and nearly all the brick work completed. The engine and other heavy machinery is all in place. The shingle mill is nearly ready for its machinery. A crew of fifteen men and three teams are at work on the grade of the right-of-way and all the cuts on the road will be made before the snow goes off. By the middle of May the road will be in running order, so says manager Stevens."

"Father Zugelder has recently moved into the new stone house which has just been completed. This elegant residence which is by far the finest dwelling on the Island is a credit to the Island and especially to the Parish and friends who built it. The congregation here is greatly indebted to their faithful pastor, Father Zugelder, who made it possible for the Parish to own such a handsome church house. The location of it could not have been better. The view from the highest point on the house where Father Zugelder has cleverly planned an observatory is magnificent, for one can see not only the whole north end of the Island with Font Lake so daintily nestled among the trees, but the north channel, the Harbor and point, all the neighboring islands in their picturesque beauty, and on a comparatively clear day, the north shore and the mainland to the eastward."—Joyce Bartels

MAPLEWOODS FARM, INC.

Houses • Garages • Pole Barns
Handyman Service & Repair
Remodeling • Masonry

Cabin Openings, Closings & Cleaning
Tree and Brush Removal
Chimney Cleanings



John Works, Jr.
Licensed Residential
Builder #2101130215
Experienced Master Carpenter

Box 111, Beaver Island, MI 49782

(231) 448-2597



Floral Designs by Colleen

- Weddings ○ Funerals
- Fresh Arrangements
- Corsages ○ Weekly Specials
- Bedding Plants ○ Plant Care
- Dried and Silk Arrangements

Colleen Currier-Hart

(Beaver Island Related)

(231) 547-1130

1-800-408-1130

1516 S. Bridge St. Charlevoix, MI



REWARD

Wall Systems

- Superior insulating value
—over R32
- Greater strength than a
block wall

Call for more information

BONADEO
enterprises, inc.

448-2489

20 years Island masonry experience and
Charlevoix County's only factory trained

McCafferty's New Custom House For Rent

Weekly, 2 BR / 2Bath
Sleeps Six Easily
Walking Distance to Town
100%
Handicapped Accessible

Also: Two Houses on
Lake Michigan - Very Private
Out-of-Town Locations
Call Soon!!!

(231) 448-2238 (231) 448-2987
(231) 448-2907



Weather or Not

February is already here! Can spring be all that far behind? The weather has turned colder and a handful of flurries have visited the Island. Ground Hog Day! Heck, everyday on Beaver Island is Groundhog Day. That movie with Bill Murray has nothing on a winter up here. If there was just a little more snow...

Don't count on it. Expect some lazy, snowy days, maybe even an actual storm, and just when you think you'll be able to lace up your snow shoes our old friend the Mid-Winter Thaw will return and bring the Island back to its original winter colors of burnt orange and sienna. Not to worry though, because Old Man Winter has one week of knee deep blizzard left up his sleeve for us. In April.

—Liam Racine

Winter Hospice Volunteers

Three new volunteers have offered their services to the Beaver Island Hospice: Margaret Bass (at 448-2444), Jane Dwyer (448-2868), and Penny Young (448-2996.)



MOONEY / BELLOWS
ELECTRICAL CONTRACTORS

"We're Not In the Business To Shock You"

Don Mooney

Over 35 Years Experience
Electrical Repair * Troubleshooting
Residential & Commercial Wiring

P.O. Box 94

Beaver Island Michigan 49782

(231) 448-2456

The Lodge
OF CHARLEVOIX

**SPECIAL
DISCOUNTS**

for
Beaver Island
residents and
visitors only.

- One block to the Beaver Island ferry
- Recently updated guest rooms
- A light breakfast – complimentary, of course
- Outdoor heated pool
- In-room refrigerator
- Small-town service
- Gracious lobby and public spaces for gathering and game playing

231-547-6565

thelodge-charlevoix.com

120 Michigan Avenue
Charlevoix, MI 49720



**ERIN
MOTEL**

- On Historic Beaver Island
- 100 Yards from Dock
- Open Year Round
- Waterfront Rooms
- On Sandy Beach
- Tv's; Rental Cars Available

(231) 448-2240

Letters ... we get Letters!

The letters from Gwen Marston and Krysl Lyle in the January Beacon share my views of the Medical Board's lack of fiscal responsibility to the community they serve.

I have been reading the Medical Board meeting minutes, and it looks like I attended my first meeting regarding the new Med Center on February 20, 2001 and several more thereafter. At many meetings I had questions and/or comments. None of them appear in the minutes. For the record it looks like I have been silent.

I have not been, and will not be silent on this issue.

I voiced my concerns about the new Center at the recent public meeting. For the record I will repeat them here:

- 1.) When completed, the new Center will cost more to operate, resulting in added taxes and increased fees;
 - 2.) When you are seriously ill or injured, you will have to go across for treatment; and
 - 3.) Sadly, the new Center would provide the same care we now have.
- Bud Cruikshank

A Community Family & Friends CPR Course

is currently being planned. Anyone interested in learning CPR - for more information or to take part, please contact the Health Center at 448-2275

FOCHTMAN CARQUEST of CHARLEVOIX



Dave Cole,
manager

102 Airport Drive (231) 547-7069
Charlevoix MI 49720 (800) 642-4005

Hours: Monday – Friday, 7:30 – 5:30;
Saturday, 8:00 – 4:00

We will deliver to the boat or plane any time



R. Gillespie Enterprises, Inc.

Electrical Wiring - Maintenance
General Contracting - Licensed Builder
#2102092649

P.O. Box 217
Beaver Island
St. James, Michigan 49782

Richard L. Gillespie
(231) 448-2577
(231) 448-2366

BEAVER ISLAND REALTY

www.beaverislandrealty.com

**Providing the highest
quality materials to
help area contractors
and homeowners
build with confidence
since 1915**

Petoskey
800 968-2501



Harbor Springs
800 968-2990

Helping you build with confidence

**Providing
Unparalleled
Service and
Superior
Results**

*In Charlevoix,
Antrim and
surrounding counties.*



A Title Insurance Agency
200 Antrim St., Charlevoix
(231) 547-7300
www.mytitlecompany.com

Paula Barron & John Taylor

Classified Ads

Real Estate, For Sale:

PORT ST. JAMES - 3 Wooded Lots #727,728,729 A few blocks to Font Lake, 1/2 mile to Lake Mich. \$29,000 for all 3. \$5000 down, will finance bal. Call owner in FL (352) 326-8979

GULL HARBOR - 3 BR split level on two acres. Waterfront. Call (441) 242-9492 or (231) 448-2433 or email suestampworld@northrock.bm

10-ACRE PARCELS - Hardwoods, West Side Road, electricity, plowed roads. \$35,000 each, or all 40 acres for \$120,000. Phone (231) 547-4046 days, or (231) 547-6600 nights.

10 ACRES - Maple, beech, and white birch forest on gently rolling highlands. Bordered by thousands of acres of State Land. Two-track road, with phone, electricity. Near Green's Lake. \$40,000. (231) 448-2614.

LAKE MICHIGAN LOT - 100 ft. frontage, 300ft. deep, overlooking Garden Island. Beautiful view; fine building site, close to village. (810) 294-3415.

BEAVER ISLAND HARBOR Protected Harbor site: 60' Lake frontage by 250' deep. North of Toy Museum. Call (231) 448-2391.

Real Estate, For Rent:

HOUSE FOR LEASE - Three BRs, two and one half bath house for lease starting in October. For more information call Robert at (231) 448-2235

WATERFRONT COTTAGE - On the east side. Available by the week or weekend. One BR, full kitchen and bath. Enjoy the water and the woods, year round. Off-season rates. Complete privacy. (231) 448-2907.

WESTPORT - Spacious, comfortable, and convenient turn-key home: 3 bedrooms. In town-limits. (231) 448-2513 or (231) 943-7989/ P.O. Box 110, Beaver Island, MI 49782.

DONEGAL BAY COTTAGE - On dune with private beach access and the best swimming and sunsets on the Island. 3 BR, sleeps 6, 1 bath, washer/dryer. Kayaks and bikes for your use. \$700/ week. Off-season rates available. Dana Luscombe eves.

(248) 549-2701 days (248) 546-6680.

COTTAGE FOR RENT -NW shore with sunset view. On water. Three miles from town. All appliances and amenities. Best for 2 or 3 people. No smoking, no pets. \$550/week Off-season rates. Call (616) 396-6468.

FLORIDA HOUSE FOR RENT Spacious 3-bedroom, 2-bath home in Port Charlotte, FL (just north of Fort Myers). Swimming pool, fruit trees, near golf course. 3 miles to Gulf shoreline. By week or month. Call Laura Gillespie (231) 448-2366.

RENTAL ATTRACTION on Font Lake 3-4 BR home, private setting; fully furnished, with all the amenities. Beautiful view of lake and sunrises. New owners of this high-demand rental are offering fantastic rates. Taking reservations now for spring and summer. Off-season rates also available. Call Rasch Properties at (248) 676-0816 today

WEEKLY RENTAL - Lake front "The Last Resort" 2 BR house on Sand Bay, great view, beautiful sunrise, laundry pair, 1 1/2 bath. Phone Bill McDonough at 448-2733 (days).

CEDAR COTTAGE - on a bluff with view of harbor and mainland. 1/4 mile south of Catholic Church. 2 BRs, 1dbl. bed, 2 single;. TV/VCR, grill, complete kitchen, washer. No pets. \$540/wk. (734) 769-7565 (day), (734) 475-6178 (evenings).

DONEGAL BAY- 3 BR 2 bath Home; sleeps 6; many amenities. \$830 a week. Reduced rates for off-season. Phone (313) 885-7393, after 4:00p.m. 2BR, 1 1/2 BATH HOME IN TOWN one block from Harbor. Sleeps 5-6. All appliances incl. Laundry. \$600 per week. Off season rates NO pets. No Smoking. (614) 899-9922..

BEACHFRONT HOME for rent 3BR, loft-total 5 beds, hot tub, gorgeous views, solitude, wood stove, May-Sept. \$950/.Off-season \$795/ Call Perry at (313) 530-9776 or e-mail pgatliff@hotmail.com.

WEEKLY RENTAL-Harbor Beach Two-bedroom Condos. \$475/week. Call Carol Wierenga at 448-2808,

448-2598 or 448-2596.

HOME FOR RENT- 2 BRs, 1 bath, sleeps 4-6. On large, secluded, wooded lot. Near town and beaches. All new appliances. Comfortable and immaculate. Only \$495/week. Please call (231) 448-2206 for reservations and more information.

Items For Sale:

KING Wood-burning furnace, with ducting to chimney. \$100 or offer. Call Phil at (231) 448-2707

LOG CABIN KIT - 14ft. X 22ft. ("Prairie Craft") Presently on Beaver Island. Can deliver to site and assemble. Paul Welke 448-2374.

Services:

FOR LEASE: STORAGE UNITS You lock it, you leave it! Emerald Isle Storage. 448-2577

CERTIFIED MASSAGE THERAPIST- specializing in therapeutic acupressure, reflexology and relaxation. Relax, enjoy and recharge. Reasonable rates. Call for appointment. Karen 448-2266.

What's Changed?

Since the photo was taken in 1999, the Island landscape has added some features: the St. James septic mound, the Gull Harbor Nature Trail, the power plant, the roads in the Karnes subdivision, the BIBCO new parking lot, and several buildings, including Eager Beaver, BITA, and over a dozen homes.

Advertising Rates

Size	Monthly	Annual
Small	\$25	\$250
Medium	\$45	\$450
Large	\$60	\$600
Full Page	\$100	\$1000

For any Special Requests or Color Ads: Please call or e-mail us for a quote.

Classified Ads: \$1 per line - framed \$5 extra. Call or e-mail if you would like a photo with your ad. All classifieds are also posted on our web site at www.beaverbeacon.com

Please Call (231) 448-2476 or e-mail beacon@beaverbeacon.com



For Sale

Great Lot For Cottage in Port St. James

135' x 145'

Power, Perked, Wooded, Close to
Lake Michigan

Call Owner
(269) 857-6084

Heavenly View

For Rent: 320 feet of pure
sand beach. Screened porch
facing Lake Michigan. Sleeps
six. \$850.00 per week. Still
available this spring, early
summer, and fall.
(231) 448-2376

www.emeraldislehotel.com/cabin

For Sale

Parcel on Garden Island Harbor

4.2 Acre Parcel, 1000 ft. of front
footage on Garden Island Harbor.
Land Contract available. Coldwell
Banker / Cornell Realty. Jayson
Welser (989) 348-6761



For Rent: The Fisherman's
House. Great 'In-Town'
location. 4 BR/2 Bath; W/D;
Beautifully appointed. For
availability, call Bill or
Tammy (231) 448-2499



mcdonoughsmarket.com/rentals

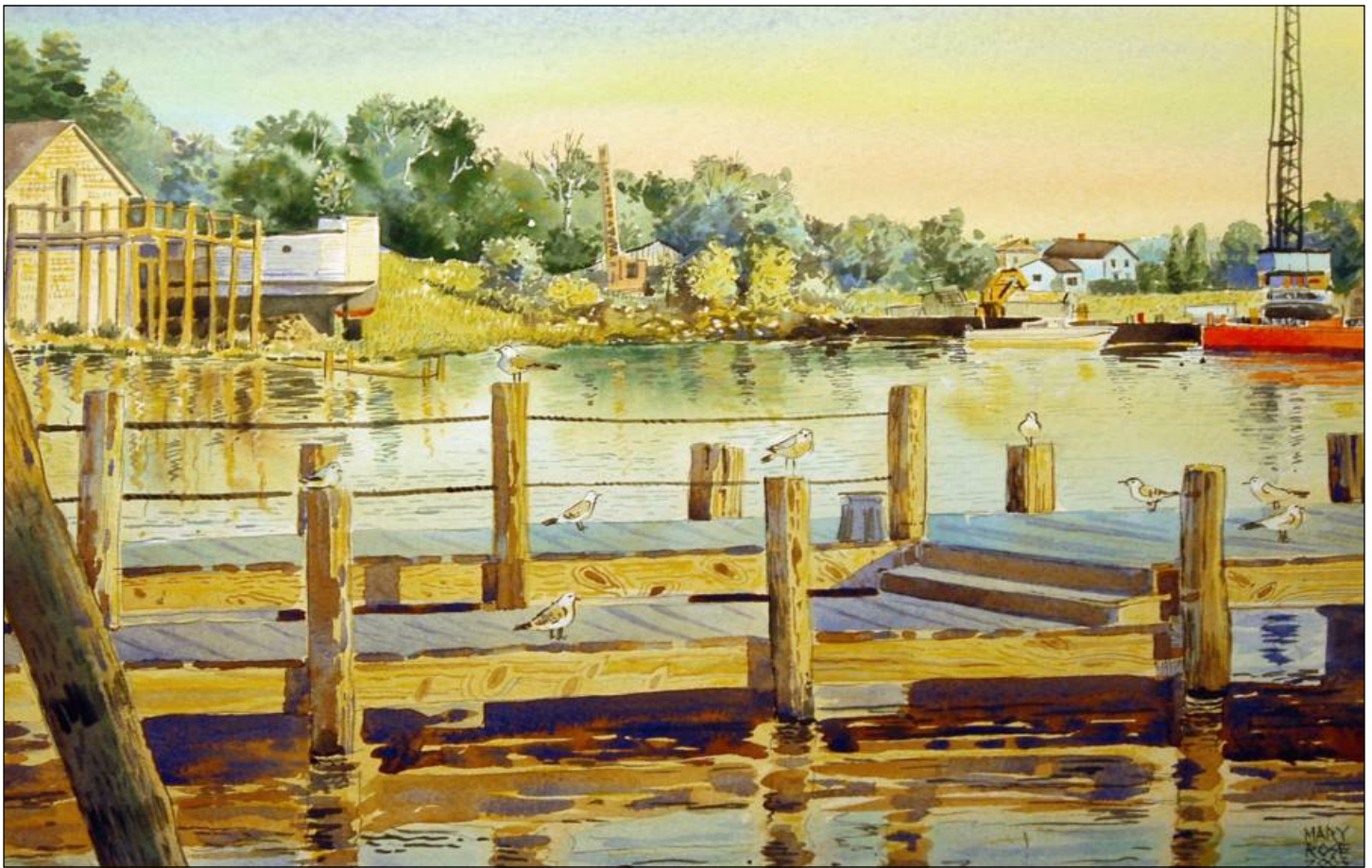
New Rental Listing

Exciting cottage with
view of High Island
from large deck. Open
floor plan, huge win-
dows on extremely pri-
vate beach. 2 BRs with
2 full beds + loft with 2
twins. 1½ baths,
TV/VCR, W/D, micro-
wave, gas grill, all ame-
nities. \$1095/week;
spring & fall \$895.
Limit 6 people.
Call (706) 268-2022,
(219) 874-4676.
May to Nov: 448-2001

Beautiful New Home For Sale



Located in Port St. James, 1,800 sq. ft. home, planned for
efficient living: 3 bedrooms and 2 full bathrooms, Cathedral
ceilings (T & G Pine), large open loft, master suite with walk-
in closet and master bath. Wrap-around covered porches,
steep roofline with dormers, cedar siding. Beautiful wooded
double lot. Quiet setting. One mile to Port St. James private
beach on Lake Michigan. 1.5 miles to St. James village.
Contact John McCafferty Construction at (231) 448-2639



P.O. Box 254
Beaver Island, MI 49782
Address Correction Requested
www.beaverbeacon.com

STANDARD RATE
US POSTAGE PAID
BEAVER ISLAND, MI
49782
PERMIT NO.3

